

16mm Pilot Lights



Solutions

Efficient and Reliable Control Indication

When you need a space-saving pilot light with plenty of special features and flexibility, look to c3controls. Our 16mm pilot lights are UL Listed, CSA Certified and CE marked making them the perfect complement for your switchgear panel.



Wide Range of Applications

Multiple light designs in multi-voltage, full voltage and resistor in a wide range of voltages up to 277V AC/DC.



Rugged Design

Polyester construction provides superior durability, corrosion resistance, moisture rejection and electrical insulation, and encases the resistors to keep heat away from the wires. Nickel plated clamp rings are ideal for corrosive environments.



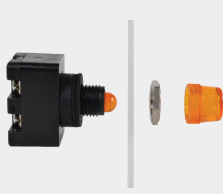
Environmentally Secure

With 4/4X and IP65 ratings, our 16mm line of pilot lights are built to last and withstand dust, corrosion, ice, and rain.



Compact Design

Thin, compact, insulating polyester housing provides added protection for those tight fitting spaces.



Quick and Easy

Front panel mounting for simple installation and lamp replacement. Just unscrew the lens, replace the lamp, and plug another one in.



Simple Customization

Various lens color options are available for appropriate operator interface.



Self-Lifting

All units are supplied with #6 terminal screws with self-lifting captive wire clamps to accommodate #22 through two #12 AWG wires (0.5 – 4mm²) per terminal.

Range

The Perfect Range of Pilot Lights to Complement Your Switchgear Application

Consider our line of 16mm pilot lights featuring the perfect range of configurations for the OEM. Each light unit designed to perfectly complement your switchgear application.



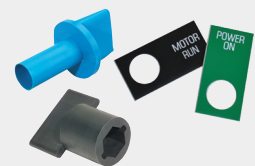
INDICATING LIGHTS

- Full voltage and resistor light units in voltages up to 240V AC/DC
- Wide variety of lamp types and colors
- Rugged Lexan™ lenses available in six color options
- Light units are available in different case depths for easy installation in your control panel



MULTI-VOLTAGE LIGHTS

- Non-relampable construction
- Wide range of applications from 20V-277V AC or DC
- Rugged Lexan™ lenses available in various color options
- Bi-polar design for easier installation
- Integrated light circuit protection for predictable failure mode of open circuits and improved reliability
- Provides electrical leakage protection so they work in all of your applications



ACCESSORIES

- Legend plates available in a variety of styles and colors. Special and custom engraving also available.
- LED replacement lamp options
- IP20 terminal guard to protect against accidental contact with live parts
- Clamp ring wrench to tighten and loosen clamp rings without scratching your panel
- Lamp removal tool for easy removal of lamps

Electrical Switchgear Protection

World-class in design and delivering on functionality our 16mm pilot lights are engineered to ensure exceptional performance and safety. Compact and available in a wide range of applications, these light units are designed for use in switchgear applications and built to handle even the harshest of environments.



Proven

UL Listed, CSA certified and CE marked, our 16mm pilot lights are suitable for use anywhere in the world. The product certifications and electrical ratings are clearly marked on the outside of the light units for easy reference during installation.

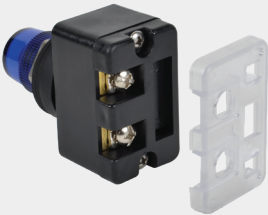
Guaranteed Same-Day Shipping



Multi-Voltage Modules

Our non-relampable multi-voltage pilot lights are the only US engineered multi-voltage light in the industry. And we've designed the circuit so you can use the light in a wider range of applications, including electronic and coil applications, from 20V to 277V AC or DC without losing light intensity.

Backed with a Lifetime Warranty



Enhanced Safety

Our field-installable IP20 terminal guards are transparent to maintain terminal visibility and they snap securely in place without the use of tools.



Long Lasting

Our reflection technology and state-of-the-art LED lamps improve visibility from all angles, and c3controls LED lamps last 100,000 hours—that's 11.4 years!



Stability

All 16mm lights use a miniature bayonet base to provide reliable security for the lamps.



Quality Materials

c3controls selects the highest quality raw materials to ensure our products outlast the competition, including Lexan™ plastic for our lenses—improving visibility and resistance to high impact for reliable performance, even in high ambient temperatures.

GET THE MOST OUT OF OUR COMPLETE LINE OF 16MM PILOT LIGHTS.

Download resources, request a catalog, and configure products!

SHOP NOW:

www.c3controls.com/16mm-pilot-lights

