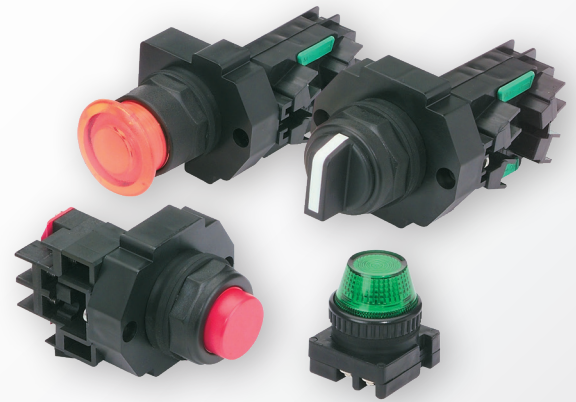


# 30MM HAZARDOUS PILOT DEVICES



## SERIES 30 PRODUCT PROFILE

c3controls **30mm Hazardous Pilot Devices** are designed for your most demanding hazardous duty applications and include a wide range of push buttons, pilot lights, and selector switches. Full-voltage, resistor, and dual input operators are available from 6V-480V AC/DC.



### LEADING THE INDUSTRY WITH OUR INNOVATIVE AND RUGGED DESIGN

✓ <b>Easy to Install</b>	Our contact blocks snap-on for secure assembly and are color coded for quick circuit identification.
✓ <b>Class 1, Division 2</b>	Leading the industry with the largest selection of Class 1, Div. 2 hermetically sealed reed contact blocks and factory sealed contact blocks.
✓ <b>Simple Customization</b>	Our light modules come with various lens color options for appropriate operator interface and are available in incandescent, neon, or our LED lamps with leakage protection.
✓ <b>Visible Certifications</b>	Our product certifications and electrical ratings are clearly marked on the outside of the contact blocks for easy reference during installation.
✓ <b>Heavy Duty</b>	Polyester construction provides superior durability, corrosion resistance, moisture rejection and electrical insulation. For added protection, metal parts are nickel-plated.
✓ <b>Convenient</b>	Reduce inventory with our interchangeable modular design, providing endless options for appropriate operator interface.
✓ <b>100% Reliability</b>	Hermetically sealed and factory sealed contact blocks are manufactured with all stainless steel hardware for use in harsh environments.
✓ <b>Added Security</b>	All 30mm hazardous location operators come with a screw tightened mounting bracket to ensure contact blocks remain snug against operator.
✓ <b>Environmentally Secure</b>	With 4/4X and IP65 ratings, our 30mm line of pilot devices are built to last and withstand dust, corrosion, ice, and rain.
✓ <b>Limited Lifetime Warranty*</b>	Every product is backed by our limited lifetime warranty—unmatched in the industry—bringing you quality components that perform in the most demanding applications.
✓ <b>Guaranteed Same-Day Shipping*</b>	Product availability reduces inventory, and improves cash-flow—saving you money. With c3controls any order for standard catalog items received by 6:00pm ET is guaranteed to ship same-day.
✓ <b>Advantage Pricing</b>	Our approach to product development, manufacturing, and focus on servicing the OEM and Electrical Equipment Builder reduces cost. The result—the best value in the industry.

\*See c3controls Terms & Conditions

### UNIQUE FEATURES

#### Metal on the inside—where it counts!

- c3controls 30mm Push-Twist-Release Emergency Stop devices feature a nickel-plated detent mechanism with stainless steel ball, and our Push-Pull operators contain a solid stainless steel detent mechanism. These features ensure reliable operation in emergency stop applications and provide safe interruption of circuits and longer life.

#### U-Cup Seal

- Our revolutionary U-Cup seal is infused with a Teflon coating to eliminate cracking when exposed to harsh conditions and keeps water, oils, and dust away from the contact blocks.

#### Internal Self-Lubricant

- All frictional parts are molded with an internal self-lubricant to provide outstanding wear without troublesome greases used by others.

#### One Cam Design

- Our single cam design eliminates the need for multiple cam and selector switch configurations, reducing inventory and saves you labor time and costs.

#### Rubber Boots

- Our state-of-the-art Fluorosilicone rubber boots protect both the operators and the circuits behind them from harsh chemicals and climates. They feature a nickel-plated brass thread ring that is molded into a special thermoset compound guaranteed to out perform Hypalon boots.



# 30MM HAZARDOUS PILOT DEVICES

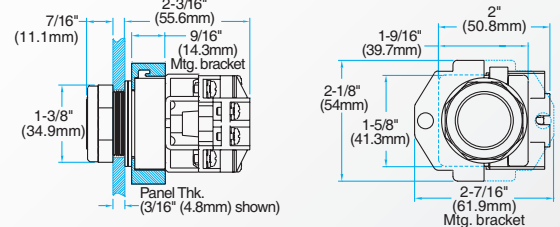
## SPECIFICATIONS

DIELECTRIC STRENGTH (MECHANICAL CONTACTS) 2200V for 1 Minute					
FACTORY SEALED CONTACT BLOCK - CBFS/CBFSR					
Class I Div. 2 Gr. B, C, & D/Zone 2 Gr. IIB +H2					
Utilization Category					
	IEC	UL	Make Rating	Break Rating	Ith Thermal Current
AC	AC-15	A600	7200VA	720VA	10A
DC	DC-13	P300	138VA	138VA	5A
NOTE: For AC voltage below 72V AC (28V DC) the max. allowed switching current is 10A=lth (5A=lth). For switching applications below 24V/40mA, Hermetic Reed contacts are recommended.					
HERMETICALLY SEALED POWER REED CONTACT BLOCK					
Class I Div. 2 Gr. A, B, C, & D/Zone 2 Gr. IIC					
Utilization Category					
	IEC	UL	Make Rating	Break Rating	Ith Thermal Current
AC	AC-15	B300	3600VA	360VA	5A
DC	DC-13	C600	1800VA	180VA	2.5A
DC	DC-13	Q300	69VA	69VA	2.5A
NOTE: For AC voltage below 72V AC (28V DC) the max. allowed switching current is 5A=lth (2.5A=lth). Suitable for switching DRY circuits and Low Energy Circuits (Less than 24V-40mA).					
HERMETICALLY SEALED MEDIUM-LOGIC REED CONTACT BLOCK					
Class I Div. 2 Gr. A, B, C, & D/Zone 2 Gr. IIC					
Utilization Category					
	IEC	UL	Inductive	Resistive	Ith Thermal Current
AC	AC-12	250V Max.	40VA	100 Watt	3A
NOTE: Suitable for switching DRY circuits and Low Energy Circuits (Less than 24V-40mA).					
HERMETICALLY SEALED MID-POWER REED CONTACT BLOCK					
Class I Div. 2 Gr. A, B, C, & D/Zone 2 Gr. IIC					
Utilization Category					
	IEC	UL	Make Rating	Break Rating	Ith Thermal Current
AC	AC-15	C300	1800VA	180VA	2.5A
DC	DC-13	Q150	69VA	69VA	2.5A
NOTE: For AC voltage below 72V AC (28V DC) the max. allowed switching current is 2.5A=lth (2.5A=lth). Suitable for switching DRY circuits and Low Energy Circuits (Less than 24V-40mA).					
HERMETICALLY SEALED LOGIC REED CONTACT BLOCK					
Class I Div. 2 Gr. A, B, C, & D/Zone 2 Gr. IIC					
Utilization Category					
	IEC	UL	Inductive	Resistive	Ith Thermal Current
AC		220V Max.	N/A	40 Watt	2A
NOTE: Suitable for switching DRY circuits and Low Energy Circuits (Less than 24V-40mA).					
INDICATING LIGHTS					
Light Unit	T-Code				
FV Incandescent Lights	T4A				
FV LED Lights	T6 (No marking required)				
Resistor Incandescent Lights	T3C				
Resistor LED Lights	T4A				
Multi-Voltage 20V-277V LED Lights	T4A				
ENVIRONMENTAL RATINGS					
	Type 1, 2, 3, 3R, 4/4X, 12, 13, and IP65				
Operating Temperature	-40° F to +131° F (-40° C to +55° C)				
Storage Temperature	-40° F to +185° F (-40° C to +85° C)				
TERMINAL & WIRING CONSIDERATION					
Wire: AWG 22 -12 CU	(Copper only - Solid/Stranded) [5 ~ 4mm <sup>2</sup> ] 1 or 2 wires permitted per termination.				
Recommended Torque	7-10 lb-in [0.8-1.0 Nm]				
ROHS COMPLIANCE					
For RoHS compliance documentation by product, refer to <a href="http://www.c3controls.com">www.c3controls.com</a> .					

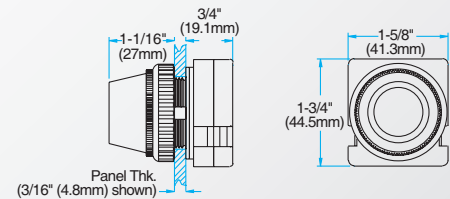
For complete ratings and detailed specifications refer to [www.c3controls.com](http://www.c3controls.com).

## DIMENSIONS

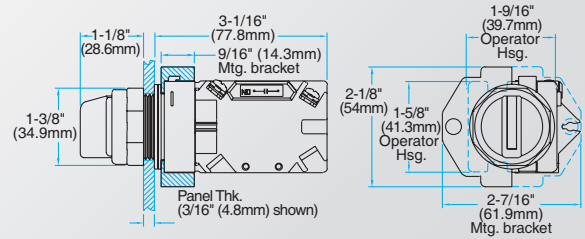
Non-Illuminated Operator (shown with Flush Cap & Factory Sealed Contact Block)



Full Voltage Pilot Light Operator (shown with PLL)



Selector Switch Operator (shown with Standard Handle)



## CERTIFICATIONS

### Conformity to Standards:

PILOT DEVICES  
UL 508, 698, 1604 & 2279

CSA C22.2 No. 0, 14, 25, 30M, 157 & 213  
IEC 60947-1, 60947-5-1

### Certifications:

UL File #: E157436 (Guide NOIV, NOIV2, NOIV7),  
E68568 (Guide NKCR, NKCR7)  
CSA File #: LR47446  
CE Marked (per EU Low Voltage Directive 2006/95/EC and RoHS Directive 2011/65/EU)



MULTI-VOLTAGE PILOT LIGHTS  
UL 508, 1604

UL File #: E68568 (Guide NKCR, NKCR7);  
E157436 (Guide NOIV)  
CE Marked (per EU Low Voltage Directive 2006/95/EC and RoHS Directive 2011/65/EU)



IEC 60947-1, 60947-5-1

Visit [www.c3controls.com](http://www.c3controls.com) to download product certifications.



**c3controls**

Copyright © 2019 c3controls. All Rights Reserved.  
REVISION 04.2019