

OPERATING INSTRUCTIONS

Cat. No. ETR-D22SS



Please retain these instructions and review them prior to using the unit:

⚠ Warning :

- The Equipment is built-in type with Class II construction and is protected by Reinforced Insulation. Terminals are a part of the front panel and are protected by means of finger guards. Finger guards are not to be removed during wiring, installation, operation or maintenance.
 - The power should be turned off while wiring and maintenance to prevent the risk of electric shock. Do not touch any terminals when the power is ON.
 - Wiring shall be done strictly according to the terminal layout with shortest connections.
 - Fuse Protection: The equipment does not have Built-in fuse. External fuse of rating 275 VDC/1 A is recommended.
- ⚠ **Caution:**
- This unit is not intended for outdoor use.
 - The power connection cable must have a cross-section of at least 18 AWG (1mm²) and insulation capacity of at least 1.5kV. Use lugged terminals to accept M3 (No. 6) screws.

- The output connections must not be loaded beyond the specified values/range.
- Avoid inflow of dust and contact of conductive material with the internal circuitry of the unit.
- Clean the equipment with a clean, soft cloth. Do not use any organic solvents like Isopropyl alcohol for cleaning.

SPECIFICATIONS

Supply Voltage

110V 50 Hz / 120V 60 Hz,
230V 50 Hz / 240V 60 Hz
400 - 415V 50Hz
(Factory set). (Tolerance: 85% to 110%,
AC: 50 or 60 Hz).

Output Contact

SPDT (1 Changeover) contact each for star (Wye) & Delta relay.
(Rated at 5A @ 250 VAC/24 VDC, resistive.)

LED Indication

Star (Wye) relay, Delta relay.

Time Range

Run up time: 30/60 sec.
Change over time: 50/100 ms.
(User selectable via DIP switches).

Accuracy

Setting: ± 5% of full scale.
Repeat: ± 0.5% or 50 ms
(whichever is greater)

Reset

On interruption of power.
Reset time less than 100 ms.

Mounting

DIN rail / Screw mounting.

Housing

Flame retardant plastic.

Temperature

Operating: 0 to +50° C (32 to 122° F)
Storage: -20 to +75° C (-4 to 167° F)

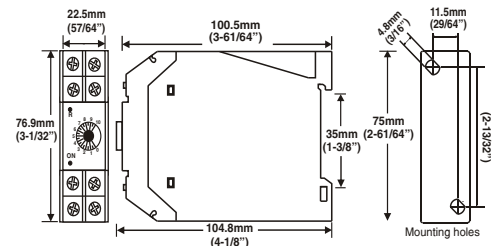
Humidity (Non-condensing)

95% RH.

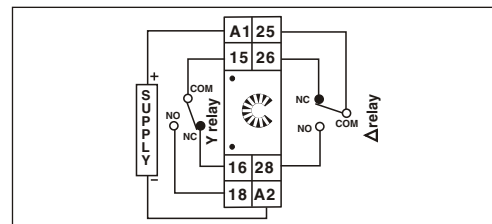
Weight

130g (4.6 oz.)

PANEL DIMENSIONS:



TERMINAL CONNECTIONS



| TERMINAL | DESCRIPTION |
|----------|------------------|
| A1 | Timer Supply (L) |
| A2 | Timer Supply (N) |
| 15 | Y relay COM |
| 16 | Y relay NC |
| 18 | Y relay NO |
| 25 | Δ relay COM |
| 26 | Δ relay NC |
| 28 | Δ relay NO |

DIP switch setting for time range selection
For Run time range

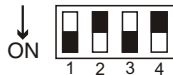
| TIME RANGE | SW1 | SW2 |
|------------|-----|-----|
| 30sec | ON | OFF |
| 60sec | OFF | ON |

For Pause time range

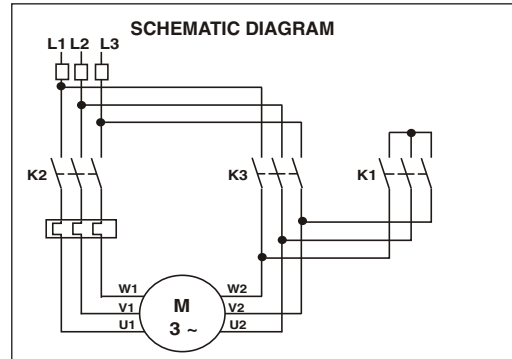
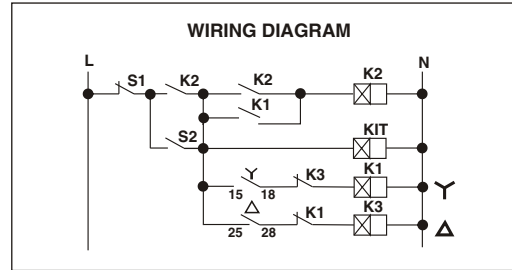
| TIME RANGE | SW3 | SW4 |
|------------|-----|-----|
| 50msec | ON | OFF |
| 100msec | OFF | ON |

Switch setting example

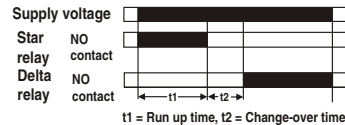
Run-up time range - 30sec.
Pause time range - 50msec



PRINCIPLE OF OPERATION



MODE OF OPERATION



c3controls®

PO Box 496
Beaver, PA 15009
800.560.8560
www.c3controls.com

Note: Specifications subject to change without notice.
Refer to website for product updates.