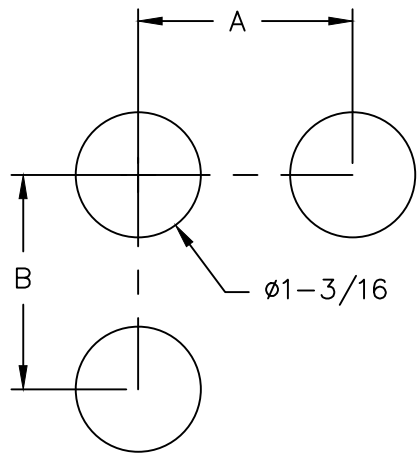




FIG #1 MOUNTING HOLE PATTERN

MOUNTING INFORMATION



SPACING	A	B
MIN	2"	2"
STANDARD	2-1/4"	2-1/4"

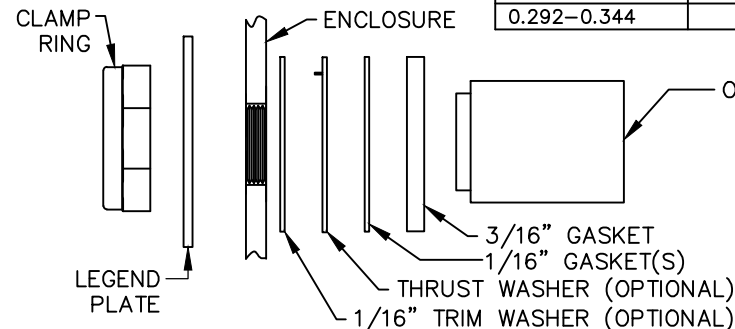


TABLE 1 - MOUNTING GASKETS FOR 30MM PUSH BUTTON & SELECTOR SWITCHES

PANEL THICKNESS	3/16" GASKETS	1/16" GASKETS
Less Than 0.080	1	5
0.080-0.132	1	4
0.133-0.185	1	3
0.186-0.238	1	2
0.239-0.291	1	1
0.292-0.344	0	3

TABLE 2 - MOUNTING GASKETS FOR 30MM PILOT LIGHT

PANEL THICKNESS	3/16" GASKETS	1/16" GASKETS
Less Than 0.080	1	2
0.080-0.132	1	1
0.133-0.185	0	3
0.186-0.238	0	2
0.239-0.291	0	1

TABLE 3 - MOUNTING GASKETS FOR 30MM ILLUMINATED PUSH PULL OPERATOR

PANEL THICKNESS	3/16" GASKETS	1/16" GASKETS
Less Than 0.080	1	3
0.080-0.132	1	2
0.133-0.185	1	1
0.186-0.238	0	3
0.239-0.291	0	2
0.292-0.344	0	1

REMOTE TEST WIRING

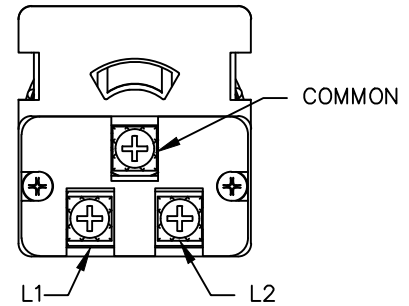
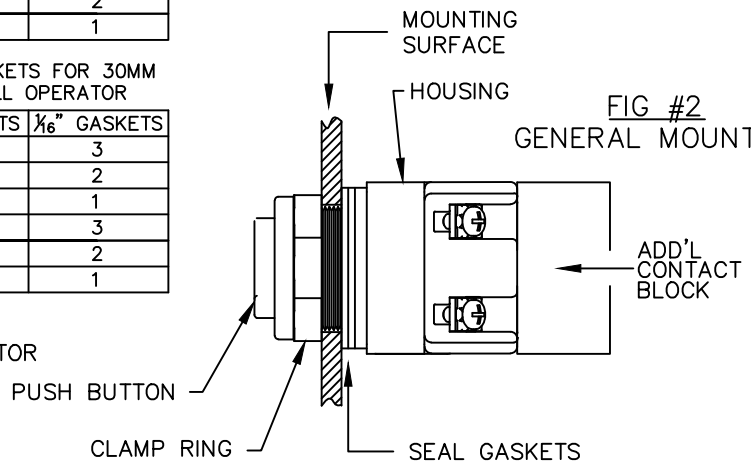


FIG #2 GENERAL MOUNTING



LIGHTS & ILLUMINATED OPERATOR INSTALLATION INSTRUCTIONS

OPERATOR INSTALLATION INSTRUCTIONS

- 1) AFTER REMOVING THE OPERATOR FROM IT'S PACKAGE, UNSCREW AND REMOVE THE CLAMP RING
- 2) TO ASSURE A GOOD SEAL, THE CORRECT NUMBER OF GASKETS MUST BE USED - REFER TO TABLES 1-3.
- 3) INSERT OPERATOR HOUSING FROM THE REAR OF PANEL, THROUGH THE PANEL MOUNTING HOLE - REFER TO FIGURE 2.
- 4) LOCATE THE PUSH BUTTON (CAP OR HANDLE) FOR PROPER ORIENTATION IN PANEL. ANY LEGEND PLATES, OPTIONAL THRUST OR TRIM WASHERS ARE TO BE ADDED AT THIS POINT.
- 5) SECURE THE OPERATOR BY INSTALLING THE CLAMP RING. SUFFICIENT TORQUE (25 TO 30 LB-IN) WILL COMPRESS THE SEAL GASKETS MAKING THE OPERATOR TIGHT TO THE PANEL. THE OPERATOR SHOULD NOT ROTATE IN THE HOLE WHEN TWISTED BY HAND
- 6) OPERATE THE UNIT TO OBSERVE PROPER CONTACT OPERATION.

NOTE:

CERTAIN SPECIAL OPERATORS REQUIRE INSTALLATION OF ADDITIONAL HARDWARE ITEMS. THESE ARE EVIDENT WHEN DISASSEMBLING SOME PORTION OF THE PRODUCT PRIOR TO PLACEMENT ON A PANEL. FOR EXAMPLE, THE POTENTIOMETER INSTALLATION REQUIRES THAT A SET SCREW BE REMOVED FROM THE KNOB PRIOR TO OPERATOR BEING INSERTED THROUGH HOLE IN MOUNTING SURFACE.

- 1) TO ASSURE A GOOD SEAL, THE CORRECT NUMBER OF REAR PANEL GASKETS MUST BE USED - REFER TO TABLES 1-3.
- 2) INSERT UNIT FROM THE REAR OF PANEL, THROUGH THE PANEL MOUNTING HOLE - REFER TO FIGURE 2.
- 3) INSTALL ANY ENVIRONMENTAL SEALS/ REFLECTORS THAT WERE PROVIDED WITH LENS CAP. THIS IS A NECESSARY PART OF THE TYPE 4-4X ENVIRONMENTAL RATING.
- 4) SECURE THE OPERATOR BY INSTALLING THE CLAMP RING ON THE PANEL FRONT. SUFFICIENT TORQUE WILL COMPRESS THE REAR SEAL GASKETS MAKING THE OPERATOR TIGHT TO THE PANEL. THE WHITE INNER REFLECTOR SERVES A DUAL FUNCTION AS A LENS SEAL. WHEN INSTALLING THE COLORED LENS, SPECIAL CARE MUST BE TAKEN TO MAKE SURE THAT THE LENS TIGHTENS ALL THE WAY DOWN AND COMPRESSES THE INNER WHITE SEAL. IF IN DOUBT, REMOVE ONE ADDITIONAL 3/16" GASKET FROM BEHIND THE PANEL.

NOTE:

TO REPLACE BULB, REMOVE THE LENS CAP THEN PUSH INWARD AND ROTATE BULB CONUTER-CLOCKWISE (1/4 TURN). IF YOU ARE HAVING TROUBLE REMOVING BULB, USE LAMP REMOVAL TOOL (C3CONTROLS CAT# LRT). REPLACE BULB (CONTACT C3CONTROLS IF YOU HAVE QUESTIONS REGARDING BULB SPECIFICATIONS) BY PUSHING IT INTO THE SOCKET AND LOCKING IT INTO PLACE BY ROTATING CLOCKWISE (1/4 TURN).