

ENCLOSED DISCONNECT SWITCHES



When you need an at-motor non-fused disconnect switch with superior performance, look to c3controls.

Our Series EDS2 Enclosed Disconnects feature 3- and 4-Pole disconnect switches in ABS Plastic, Carbon Steel, Die Cast Aluminum and Polycarbonate enclosures with padlocking operating handles to take on your most demanding application requirements.

Series EDS2 Enclosed Non-Fused Disconnect Switches	21
Accessories	23
Specifications	24
Dimensions	25



PROVEN



Conformity to Standards: DISCONNECT SWITCHES

UL 508
CSA C22.2 No. 14
IEC 60947-1, 60947-3

Certifications:

UL File #: E187641 (Guide NLRV, NLRV2, NLRV7, NLRV8)

CE Marked (per EU Low Voltage Directive 2006/95/EC and
RoHS Directive 2011/65/EU)



ENCLOSURES

UL 50
CSA C22.2 No. 94
IEC 60529

UL Listed
CSA Certified

Visit www.c3controls.com to download product certifications.

ENCLOSED DISCONNECT SWITCHES

Within our extensive product portfolio is our line of Enclosed Disconnect Switches, just one example of our superior product quality. Every one of our products is designed and manufactured to the needs of the machine builder. Check out all the features of our Series EDS2 below!

MANUFACTURING THE MOST RELIABLE AND HEAVY-DUTY ENCLOSED DISCONNECT SWITCHES.

✓ Proven	Enclosures are UL Listed and CSA certified and our Disconnect Switches are certified to UL and CSA Standards and CE marked for global versatility.
✓ Convenience	Single catalog number, no assembly required, shorter control panel Bill of Materials, and easier inventory management.
✓ Reduced Inventory	Switches are factory assembled with operating handles for Just-In-Time (JIT) manufacturing and reduced inventory.
✓ Circuit Isolation	Disconnect switches include positive drive to open double break contacts to ensure circuit isolation, and feature a 10kA short circuit rating at 600V AC with Class J and Class CC fuses.
✓ Heavy-Duty	Glass filled polyamide thermoplastic housings are ARC track resistant and provide insulation between poles.
✓ Wide Range of Operation	Wide variety of operating handle styles and colors with Type 1, 2, 3, 3R, 4/4X, 12, 13 and IP65 ingress protection ratings for the most demanding industrial environments.
✓ Durable Materials	A variety of compact, lift-off cover ABS Plastic, Polycarbonate, Carbon Steel, and Aluminum Die Cast enclosures with Type 1, 4X, 12, 13, IP65 and IP66 ratings for the most demanding applications.
✓ Limited Lifetime Warranty*	Every product is backed by our limited lifetime warranty—unmatched in the industry—bringing you quality components that perform in the most demanding applications.
✓ Guaranteed Same-Day Shipping*	Product availability reduces inventory, and improves cash-flow—saving you money. With c3controls any order for standard catalog items received by 6:00pm ET is guaranteed to ship same-day.
✓ Advantage Pricing	Our approach to product development, manufacturing, and focus on servicing the OEM and Electrical Equipment Builder reduces cost. The result—the best value in the industry.

*See c3controls Terms & Conditions

“With only one part number and no need for assembly upon delivery, the ordering and installation processes are much smoother with c3controls disconnect switches.”

Mike Jones, Engineer • **Basic Controls Inc.**

ABS Plastic



Polycarbonate



Die Cast Aluminum



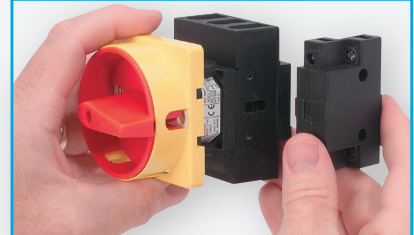
Carbon Steel

**UNIQUE PRODUCT LINE FEATURES****PADLOCKABLE SWITCHES**

Operating handles with ON/OFF and international I/O symbols, can be padlocked in the "OFF" position with up to three padlocks for extra safety and the security needed during maintenance activities.

MANUAL MOTOR CONTROLLER

Certified as Manual Motor Controllers Suitable as Motor Disconnects for motors up to 25HP at 480V (30kW at 400V).

FLEXIBILITY

The modular switch design allows up to two modules to be added to a three pole switch, with one module installed on the left side and the other installed on the right side.

ADVANCED SAFETY

Switches include IP20 terminals and a line-side terminal shield is provided as standard on the disconnect switches to guard against accidental contact with live parts.

FIND IT FAST

Enclosed Disconnect Switches



- Certifications
- Specifications
- Dimension Drawings
- Installation Instructions
- Easy to Buy

www.c3controls.com

IT'S EASY TO BUILD YOUR OWN ENCLOSED DISCONNECT

Simply pick the code number from each of the sections below and combine them to build your part number.

Series EDS2 Enclosed Disconnect Switches (Non-Fused)

EDS2 - I - II - III - IV - V - VI

Example: To build one of our most popular Enclosed Disconnects, the part number would be **EDS2 + II + III + IV + V + VI** or **EDS2-330-PC-GRY-A11**



I. OPERATOR TYPE

CODE	DESCRIPTION	LIST
EDS2	Enclosed IEC Non-Fused Disconnect Switch	\$ 12.00

II. SWITCH CODE - # OF POLES & DISCONNECT SWITCH RATING

			RATINGS FOR SWITCHING AC MOTORS / HP (60HZ)					
			1 PHASE		3 PHASE			
CODE	NUMBER OF POLES	CURRENT RATING (A)	120V	240V	240V	480V	600V	LIST
316	3	16	1/2	1-1/2	3	7-1/2	10	\$ 38.00
416	4							\$ 52.00
325	3	25	1-1/2	2	7-1/2	15	20	\$ 42.00
425	4							\$ 56.00
330	3	32	2	3	7-1/2	20	25	\$ 49.00
430	4							\$ 65.00
340	3	40	3	5	10	20	30	\$ 61.00
440	4							\$ 88.00
360	3	63	3	7-1/2	15	25	30	\$ 71.00
460	4							\$101.00

III. ENCLOSURE TYPE

CODE	MATERIAL	FOR SWITCH CODES	DIMENSION REF.	CAT. NO.	LIST
ABS	ABS Plastic (IP65)	316, 416	1	ABSDSEN1	\$ 32.00
		325, 425, 330, 430	2	ABSDSEN2	\$ 32.00
		340, 440, 360, 460	3	ABSDSEN3	\$ 44.00
CS	Carbon Steel (Type 12, 13 & IP65)	325, 425, 330, 430, 340, 440, 360, 460	4	CSDSEN45	\$156.00
DC	Die Cast Aluminum (IP66)	325, 425, 330, 430, 340, 440, 360, 460	5	DCDSEN45	\$156.00
PC	Polycarbonate (Type 4X & IP65)	325, 330, 340, 360	6	PCDSEN	\$ 56.00
		425, 430, 440, 460	7	PCDSEN45	\$ 90.00

IV. OPERATING HANDLE TYPE

CODE	FOR SWITCH CODES	DESCRIPTION	LIST
ABS ENCLOSURES			
L	316, 416	Lever (IP65)	\$ 13.00
G	325, 425, 330, 430, 340, 440, 360, 460	Round (Type 1, 2, 3, 3R, 4/4X, 12, 13 & IP65)	\$ 15.00
CARBON STEEL ENCLOSURES			
M	325, 425, 330, 430, 340, 440, 360, 460	Round (Type 1, 2, 3, 3R, 4/4X, 12, 13 & IP65)	\$ 43.00
G	325, 425, 330, 430, 340, 440, 360, 460	Round (Type 1, 2, 3, 3R, 4/4X, 12, 13 & IP65)	\$ 15.00
DIE CAST ALUMINUM ENCLOSURES			
M	325, 425, 330, 430, 340, 440, 360, 460	Round (Type 1, 2, 3, 3R, 4/4X, 12, 13 & IP65)	\$ 43.00
G	325, 425, 330, 430, 340, 440, 360, 460	Round (Type 1, 2, 3, 3R, 4/4X, 12, 13 & IP65)	\$ 15.00
POLYCARBONATE ENCLOSURES			
M	325, 330, 340, 360, 425, 430, 440, 460	Round (Type 1, 2, 3, 3R, 4/4X, 12, 13 & IP65)	\$ 43.00
G	325, 330, 340, 360, 425, 430, 440, 460	Round (Type 1, 2, 3, 3R, 4/4X, 12, 13 & IP65)	\$ 15.00

V. OPERATING HANDLE COLOR

CODE	OPERATOR COLOR	BEZEL COLOR	FOR OPERATOR TYPE CODE
RY	Red	Yellow	L, M, G
BG	Black	Grey	L, M, G

VI. OPTIONS

CODE	FOR ENCLOSURE DIMENSION REFERENCE/SWITCH CODE (*)	DESCRIPTION	LIST
(Blank)	All Switch Codes	No Option Needed	—
A11	1/316 2/325, 2/330 3/340, 3/440, 3/360, 3/460 4/All Switch Codes 5/All Switch Codes 6/No Applicable Switch Codes 7/425, 7/430, 7/440, 7/460	Auxiliary Contact Module 1NOEM and 1NC	\$ 27.00

*EXAMPLE: 2/330 represents enclosure dimension reference 2 and switch code 330.

DISCOUNT
SCHEDULE **G**



ABS PLASTIC



POLYCARBONATE



DIE CAST ALUMINUM



CARBON STEEL



HANDLE TYPE M



HANDLE TYPE G



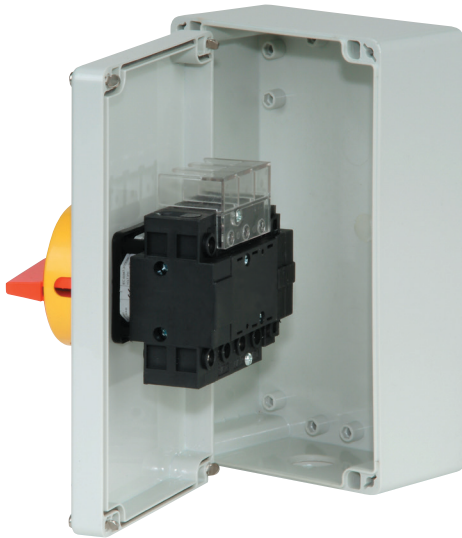
HANDLE TYPE L

ENCLOSED NON-FUSED DISCONNECT SWITCHES

Our Series EDS2 Enclosed Non-Fused Disconnect Switches provide superior performance in the most severe industrial environments and are certified as Manual Motor Controllers Suitable as Motor Disconnects for motors up to 25HP at 480V (30kW at 400V).

Product features include:

- 10kA short circuit rating at 600V AC with Class J fuses.
- Positive drive to open double break contacts ensure circuit isolation.



COMPACT SIZE WITH ROBUST DESIGN FEATURES FOR THE MOST DEMANDING DISCONNECTING APPLICATIONS.

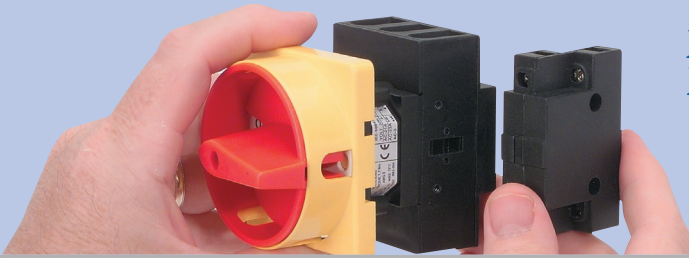
1. A variety of compact, lift-off cover ABS Plastic, Polycarbonate, Carbon Steel, and Aluminum Die Cast enclosures with Type 1, 4X, 12, 13, IP65, and IP66 ratings for the most demanding applications - including wash-downs and corrosive environments.
2. Red/Yellow or Black/Grey Operating Handles that can be padlocked in the "OFF" position with up to three padlocks for extra safety and the security needed during maintenance activities.
3. The modular switch design allows three and four pole switches and auxiliary contacts to be specified for application flexibility.
4. Switches include IP20 terminals. A line-side terminal shield is provided as standard on the disconnect switches to guard against accidental contact with live parts.
5. ABS Plastic enclosed disconnect switches feature panel/base mount switches for ultimate ease of wiring.

SOME OF OUR POPULAR CONFIGURATIONS:

SERIES EDS2 ENCLOSED NON-FUSED DISCONNECT SWITCHES

	RATINGS FOR SWITCHING AC MOTORS HP (60HZ)											
	1 PHASE		3 PHASE									
CURRENT RATING (A)	120V	240V	240V	480V	600V	NUMBER OF POLES	OPERATING HANDLE TYPE	OPERATING HANDLE COLOR	ENCLOSURE TYPE	DIMENSION REFERENCE	CAT. NO.	LIST
16	1/2	1-1/2	3	7-1/2	10	3	Lever	Red/Yellow	ABS	1	EDS2-316-ABS-LRY	\$ 95.00
25	1-1/2	2	7-1/2	15	20	3	Round	Red/Yellow	ABS	2	EDS2-325-ABS-GRY	\$101.00
									CS	4	EDS2-325-CS-GRY	\$225.00
									DC	5	EDS2-325-DC-GRY	\$225.00
									PC	6	EDS2-325-PC-GRY	\$125.00
32	2	3	7-1/2	20	25	3	Round	Red/Yellow	ABS	2	EDS2-330-ABS-GRY	\$108.00
									CS	4	EDS2-330-CS-GRY	\$232.00
									DC	5	EDS2-330-DC-GRY	\$232.00
									PC	6	EDS2-330-PC-GRY	\$132.00
40	3	5	10	20	30	3	Round	Red/Yellow	ABS	3	EDS2-340-ABS-GRY	\$132.00
									CS	4	EDS2-340-CS-GRY	\$244.00
									DC	5	EDS2-340-DC-GRY	\$244.00
									PC	6	EDS2-340-PC-GRY	\$144.00
63	3	7-1/2	15	25	30	3	Round	Red/Yellow	ABS	3	EDS2-360-ABS-GRY	\$142.00
									CS	4	EDS2-360-CS-GRY	\$254.00
									DC	5	EDS2-360-DC-GRY	\$254.00
									PC	6	EDS2-360-PC-GRY	\$154.00

SPECIAL FEATURES



ENGINEERED TO ADD AUXILIARY CONTACTS, POWER POLES, AND NEUTRAL POLES EASILY!

A variety of modular accessories can be installed in the field on most disconnect switches. Installation is easy, modules can be installed on the left or right side of the disconnect switch. Terminal shields can be installed on the line and load side of the disconnect switch.

NEUTRAL POLE MODULES



Normally open early make (NOEM) configuration. IP20 terminals guard against accidental contact with live parts.

DOOR MOUNT

CODE	CURRENT RATING CODE	LIST
DNA216	16	\$17.00
DNA225	25	\$17.00
DNA230	30	\$19.50
DNA240	40	\$21.00
DNA260	60	\$23.00

NOTE: For use with Enclosure Types: Carbon Steel, Die Cast Aluminum or Polycarbonate

PANEL MOUNT

CODE	CURRENT RATING CODE	LIST
PDNA216	16	\$17.00
PDNA225	25	\$17.00
PDNA230	30	\$19.50
PDNA240	40	\$21.00
PDNA260	60	\$23.00

NOTE: For use with Enclosure Type: ABS

POWER POLE MODULES



Normally open (NO) configuration. IP20 terminals guard against accidental contact with live parts. Electrical ratings are equivalent to the associated switch rating (refer to specifications on page 11).

DOOR MOUNT

CODE	CURRENT RATING CODE	LIST
DPA216	16	\$17.00
DPA225	25	\$17.00
DPA230	30	\$19.50
DPA240	40	\$21.00
DPA260	60	\$23.00

NOTE: For use with Enclosure Types: Carbon Steel, Die Cast Aluminum or Polycarbonate

PANEL MOUNT

CODE	CURRENT RATING CODE	LIST
PDPA216	16	\$17.00
PDPA225	25	\$17.00
PDPA230	30	\$19.50
PDPA240	40	\$21.00
PDPA260	60	\$23.00

NOTE: For use with Enclosure Type: ABS

AUXILIARY CONTACT MODULES



1 normally open early make (NOEM) and 1 normally closed (NC) contact configuration. IP20 terminals guard against accidental contact with live parts. Auxiliary contacts can be installed on switches rated 16A to 63A, reducing inventory requirements.

Ratings: AC-15: 6A at ≤240V AC
4A at 240V AC to 480V AC
Continuous Thermal Current: 15A

DOOR MOUNT

CODE	CURRENT RATING CODE	LIST
D16A211	16	\$27.00
DA211	25 ~ 60	\$27.00

NOTE: For use with Enclosure Types: Carbon Steel, Die Cast Aluminum or Polycarbonate

PANEL MOUNT

CODE	CURRENT RATING CODE	LIST
PA16DA211	16	\$27.00
PADA211	25 ~ 60	\$27.00

NOTE: For use with Enclosure Type: ABS

TERMINAL SHIELDS



Terminal shields can be installed on the line or load side of the disconnect switch to provide extra protection and guard against accidental contact with live parts.

CODE	CURRENT RATING CODE	LIST
DS2TS20	16	\$ 5.00
DS2TS60	25 ~ 60	\$ 5.00

MAXIMUM NUMBER OF NEUTRAL, POWER OR AUXILIARY MODULES BY ENCLOSURE TYPE

ENCLOSURE PART #	SWITCH INSTALLATION	MAXIMUM NUMBER OF MODULES
ABS ENCLOSURE		
ABSDSEN1	Panel	1
ABSDSEN2	Panel	1
ABSDSEN3	Panel	2
CARBON STEEL ENCLOSURE		
CSDSEN45	Door	2
DIE CAST ALUMINUM ENCLOSURE		
DCDSEN45	Door	2
POLYCARBONATE ENCLOSURE		
PCDSEN	Door	0
PCDSEN45	Door	2

DISCOUNT
SCHEDULE **G**

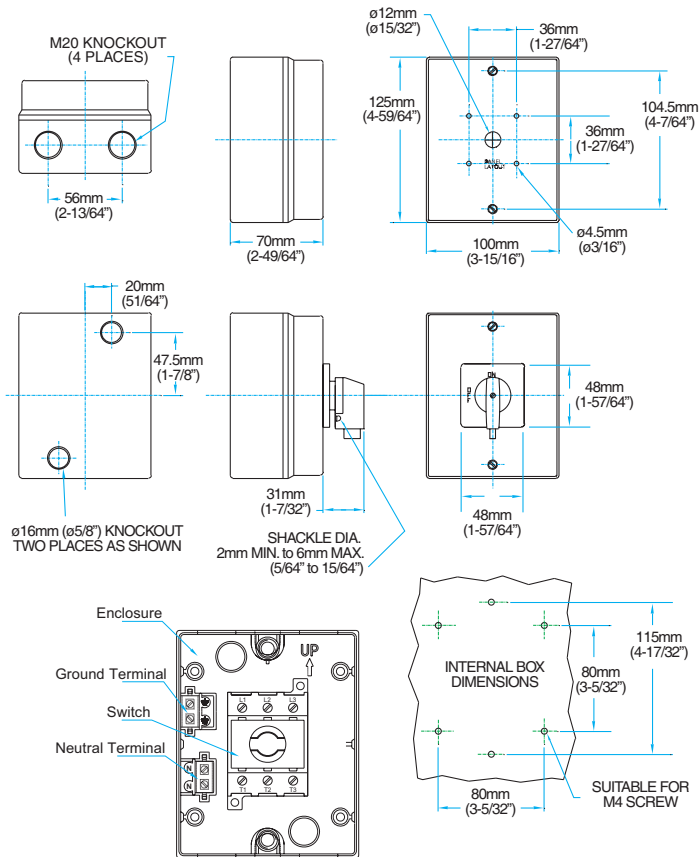
SPECIFICATIONS:

SERIES EDS2 ENCLOSED NON-FUSED DISCONNECT SWITCH SPECIFICATIONS

		SWITCH CURRENT RATING CODE				
		16	25	30	40	60
ELECTRICAL UL/CSA APPLICATIONS						
	UNITS	For detailed specifications by switch rating code, see page 11				
Rated Operating Voltage, Ue	VAC	600				
Short Circuit Current Ratings @ 600V AC With Class J Fuses	kA	10				
Maximum Fuse Size	A	20	45	45	70	70
ELECTRICAL IEC APPLICATIONS						
		For detailed specifications by switch rating code, see page 11				
Rated Insulation Voltage, Ui	VAC	750				
Rated Impulse Voltage, Uimp	kV	6				
Rated Operating Voltage, Ue	VAC	690				
Short Circuit Current Ratings @ 600V AC With Type gG Fuses	kA	5	30			
Maximum Fuse Size	A	20	32	32	63	63
MECHANICAL						
Operating Torque (Door Mount)	Lb.-in.	4.0	7.0			
CS, DS, and PC Enclosures with Operating Handle Types M and G.	Nm	0.45	0.8			
Operating Torque (Panel Mount)	Lb.-in.	4.0	9.0			
ABS Enclosures with Operating Handle Types L, M, and G.	Nm	0.45	1.0			
ENVIRONMENTAL						
Ambient Operating Temperature	°C/°F	-25 to 55 / -13 to 131				
Altitude	m/ft.	2,000/6,528				
Ingress Protection						
Switch Body	IP	20				
Operating Handle	—					
Code L		IP55	—			
Code G		—	Type 1, 2, 3, 3R, 4, 4X, 12, 13, and IP65			
Code M		—	Type 1, 2, 3, 3R, 4, 4X, 12, 13, and IP65			
Enclosure	—					
Code ABS		IP65				
Code CS		—	Type 12, 13, and IP65			
Code DC		—	IP66			
Code PC		—	Type 4X and IP65			
CONSTRUCTION						
		For detailed specifications by switch rating code, see page 11				
ROHS COMPLIANCE		For RoHS compliance documentation by product, refer to www.c3controls.com				

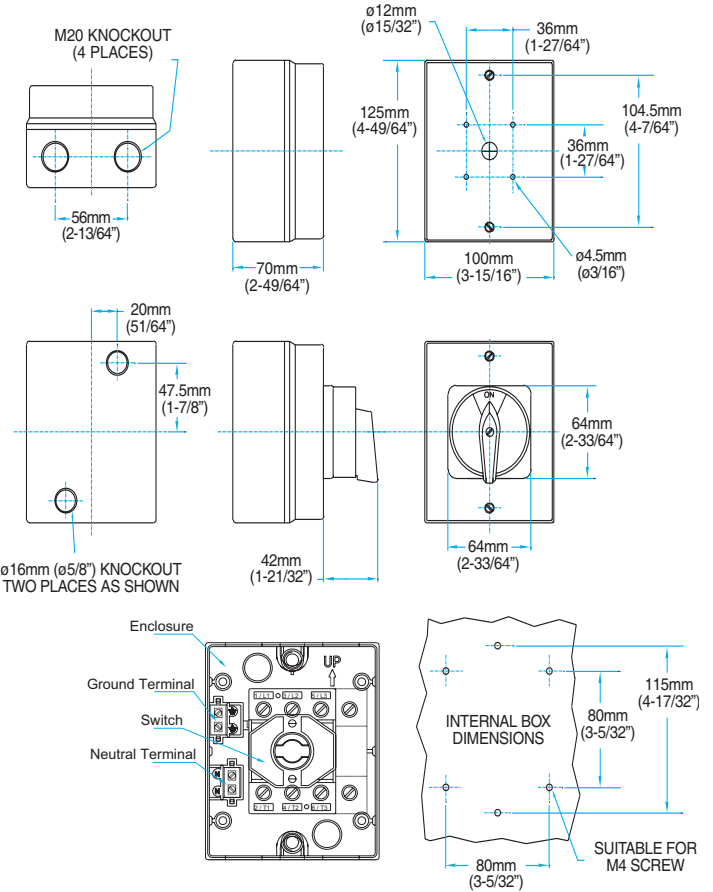
ABS PLASTIC ENCLOSED PANEL MOUNTED DISCONNECT SWITCH WITH "L" OPERATING HANDLE

16A SWITCHES (DIMENSION REF. 1)



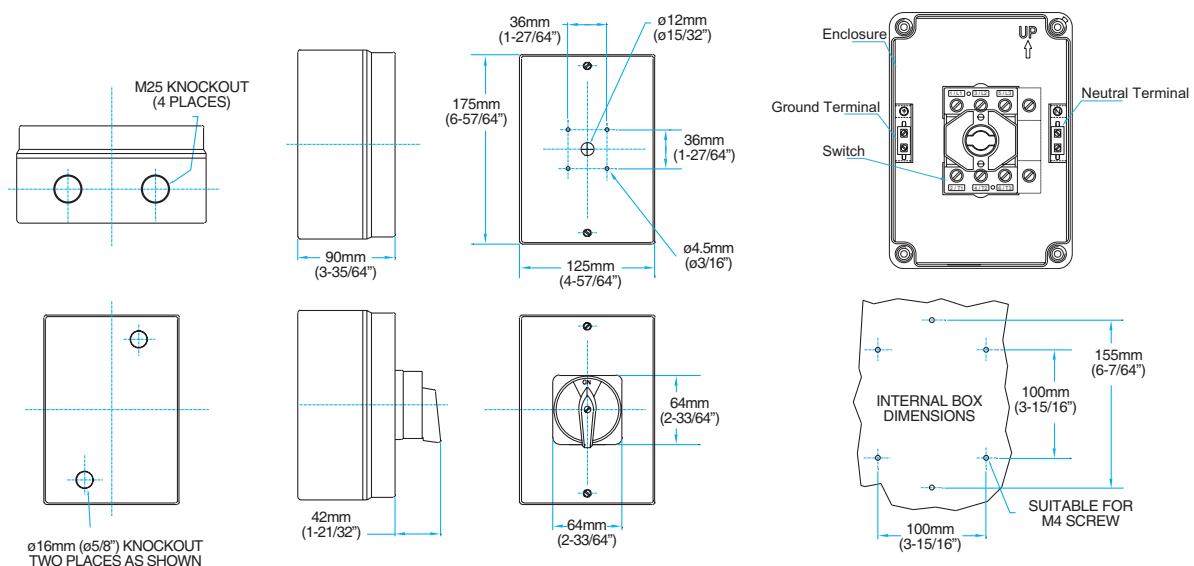
ABS PLASTIC ENCLOSED PANEL MOUNTED DISCONNECT SWITCH WITH "G" OPERATING HANDLE

25A - 32A SWITCHES (DIMENSION REF. 2)



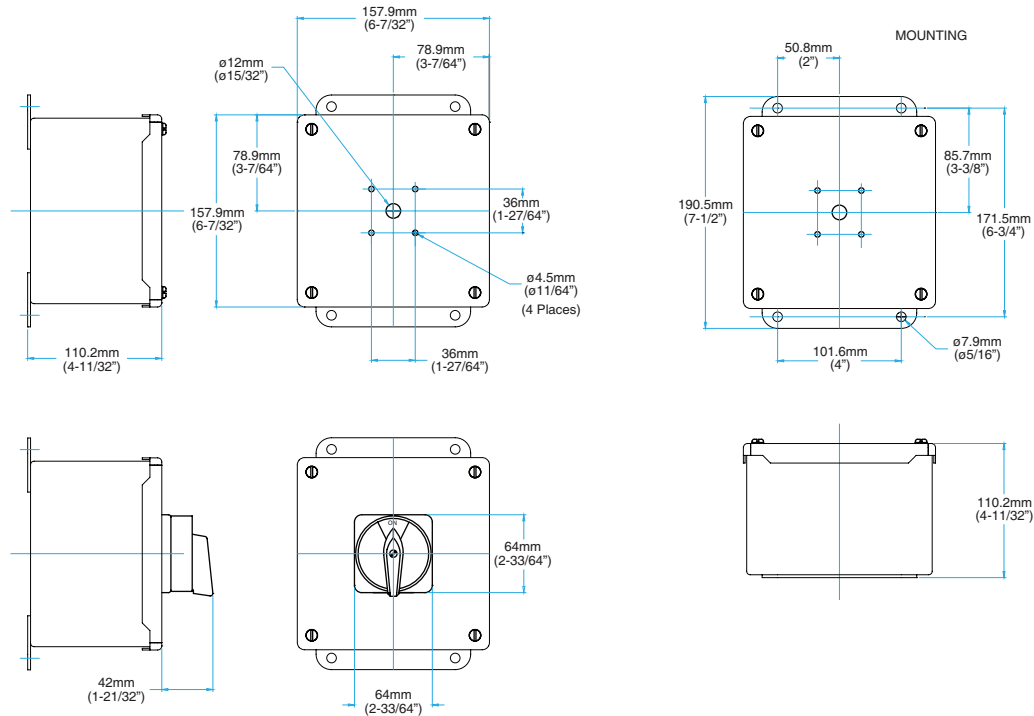
ABS PLASTIC ENCLOSED PANEL MOUNTED DISCONNECT SWITCH WITH "G" OPERATING HANDLE

40A - 63A SWITCHES (DIMENSION REF. 3)



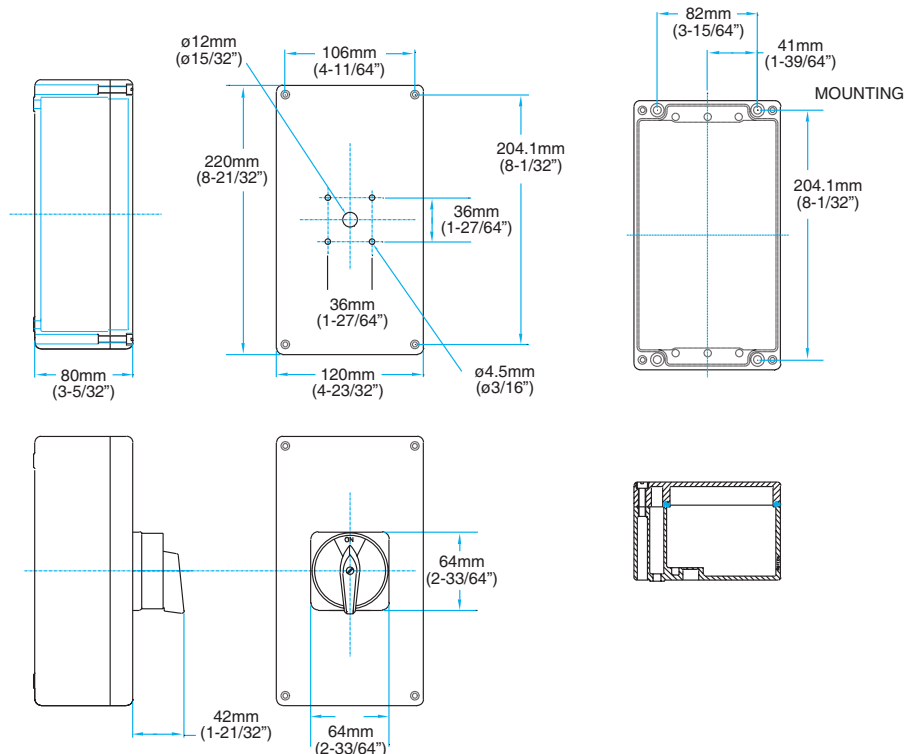
CARBON STEEL ENCLOSED DOOR/FRONT MOUNTED DISCONNECT SWITCH WITH "G" OR "M" OPERATING HANDLE

25A - 63A SWITCHES (DIMENSION REF. 4)



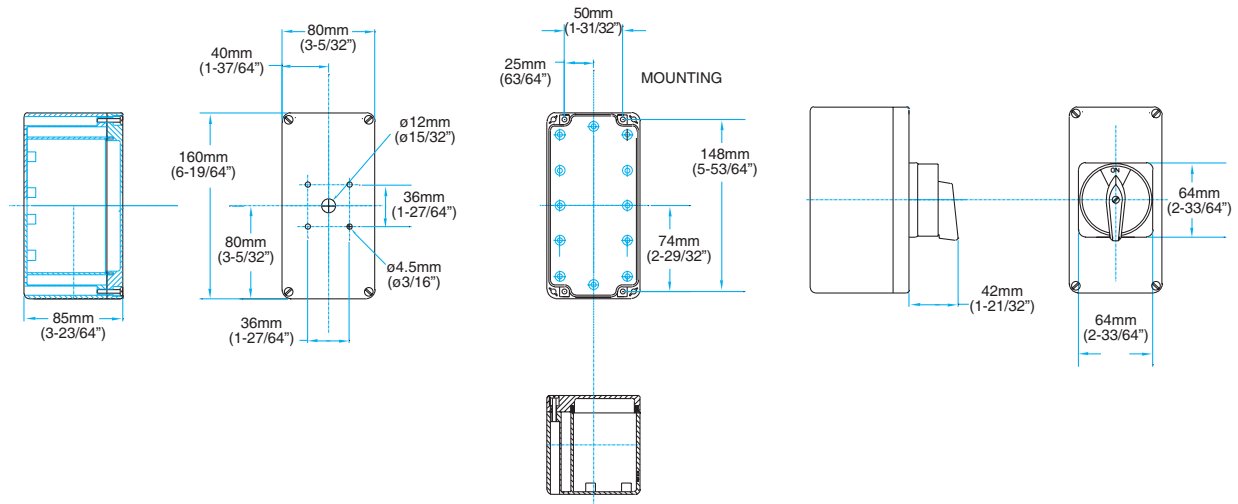
DIE CAST ALUMINUM ENCLOSED DOOR/FRONT MOUNTED DISCONNECT SWITCH WITH "G" OR "M" OPERATING HANDLE

25A - 63A SWITCHES (DIMENSION REF. 5)



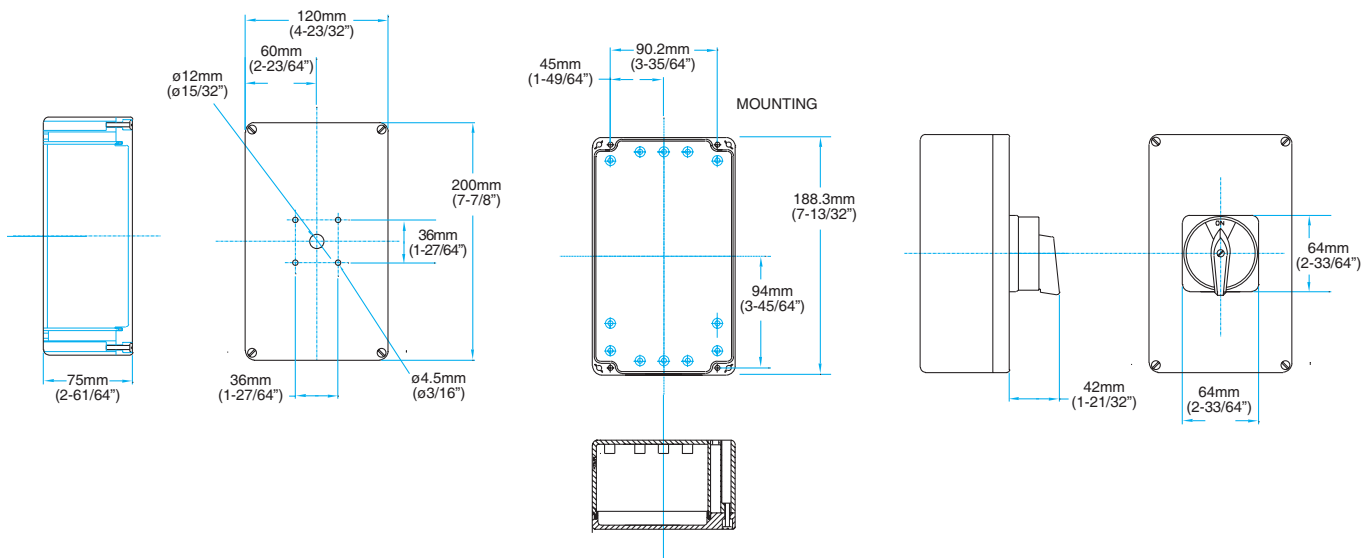
**POLYCARBONATE ENCLOSED DOOR/FRONT MOUNTED DISCONNECT SWITCH
WITH "G" OR "M" OPERATING HANDLE**

25A - 63A SWITCHES (DIMENSION REF. 6)



**POLYCARBONATE ENCLOSED DOOR/FRONT MOUNTED DISCONNECT SWITCH
WITH "G" OR "M" OPERATING HANDLE**

25A - 63A SWITCHES (DIMENSION REF. 7)



**VISIT WWW.C3CONTROLS.COM
TO DOWNLOAD CAD DRAWINGS**