

ENCLOSED CONTROL & CONTROL STATIONS



We offer an impressive line of enclosures in three different constructions: polyester, polycarbonate, and die-cast aluminum. We also offer custom control stations that can be configured and assembled to meet your particular needs.



Polyester	413
Polycarbonate	415
Die Cast Aluminum	418
Conduit Hubs	421
Custom Control Stations	421

PROVEN



Conformity to Standards:
UL 50
CSA C22.2 No. 94
IEC 60529

Certifications:
UL Listed
CSA Certified
CE Marked

Visit www.c3controls.com to download product certifications.

ENCLOSED CONTROLS

c3controls already builds the world-class products. It only made sense to offer these products enclosed in pre-configured and assembled control stations as well—an approach that dramatically reduces time and cost. Our factory assembled compact control stations meet UL standards requirements, and provide a complete solution for both indoor and outdoor applications and in extreme environments.

Single
Catalog
Number

+

No
Assembly
Required

+

Shorter
Panel Bill of
Material

+

Easier to
Manage
Inventory

=

Lower
Costs

Enclosed Disconnect Switches

Within our extensive product portfolio is our line of Enclosed Disconnect Switches. Every one of our products is designed and manufactured to the needs of the machine builder.

See pages 18-27 to configure now.



Enclosed Motor Protection Circuit Breakers

We promise durable products at a price that gives you an edge, and we guarantee same-day shipping.

See pages 140-149 to configure now.



Enclosed DOL Starter Assemblies

c3controls offers a comprehensive line of Motor Control products designed and manufactured to meet the needs of the machine builder.

See pages 106-115 & 176-194 to configure now.



Compact Control Stations

Our factory assembled 22mm IEC compact control stations and emergency stop stations meet UL standards requirements, and provide a complete solution for both indoor and outdoor applications and in extreme environments.

See pages 311-314 to configure now.



Enclosed Control Stations

We offer an impressive line of enclosures in three different constructions: polyester, polycarbonate, and die-cast aluminum. We also offer custom control stations that can be configured and assembled to meet your particular needs.

See pages 411-421 to configure now.



ENCLOSED DISCONNECT SWITCHES

Within our extensive product portfolio is our line of Enclosed Disconnect Switches, just one example of our superior product quality. Every one of our products is designed and manufactured to the needs of the machine builder. Check out all the features of our Series EDS2 below!

PADLOCKABLE SWITCHES



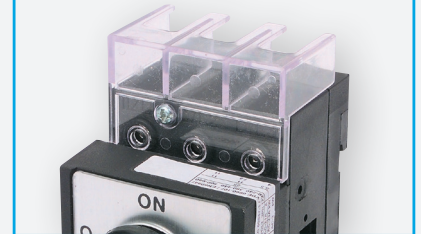
Operating handles with ON/OFF and international I/O symbols, can be padlocked in the "OFF" position with up to three padlocks for extra safety and the security needed during maintenance activities.

MANUAL MOTOR CONTROLLER



Certified as Manual Motor Controllers Suitable as Motor Disconnects for motors up to 25HP at 480V (30kW at 400V).

ADVANCED SAFETY



Switches include IP20 terminals and a line-side terminal shield is provided as standard on the disconnect switches to guard against accidental contact with live parts.

Proven

Enclosures are UL Listed and CSA certified and our Disconnect Switches are certified to UL and CSA Standards and CE marked for global versatility.

Convenience

Single catalog number, no assembly required, shorter control panel Bill of Materials, and easier inventory management.

Superior Performance

Certified as Manual Motor Controllers Suitable as Motor Disconnects for motors up to 25HP at 480V (30kW at 400V).

Reduced Inventory

Switches are factory assembled with operating handles for Just-In-Time (JIT) manufacturing and reduced inventory.

Circuit Isolation

Disconnect switches include positive drive to open double break contacts to ensure circuit isolation, and feature a 10kA short circuit rating at 600V AC with Class J fuses.

Heavy-Duty

Glass filled polyamide thermoplastic housings are ARC track resistant and provide insulation between poles.

Wide Range of Operation

Wide variety of operating handle styles and colors with Type 1, 2, 3, 3R, 4/4X, 12 and 13, and IP65 ingress protection ratings for the most demanding industrial environments.

Durable Materials

A variety of compact, lift-off cover ABS Plastic, Polycarbonate, Carbon Steel, and Aluminum Die Cast enclosures with Type 1, 4X, 12, 13, IP65 and IP66 ratings for the most demanding applications.

See pages 18-27 to configure our Enclosed Disconnects.

ENCLOSED MOTOR CONTROL

c3controls offers a comprehensive line of Motor Control products designed and manufactured to meet the needs of the machine builder. We promise durable products at a price that gives you an edge. Check out all the features of our Series E330 Enclosed Motor Protection Circuit Breakers, and Series E620 and E630 Enclosed DOL Starter Assemblies below!

ENCLOSED MOTOR PROTECTION CIRCUIT BREAKERS

series
E330

Factory assembled and wired starters and pilot devices provide the convenience of a single catalog number and shorter control panel bill of material.

SERIES E620 ENCLOSED DOL STARTERS

series
E620

Factory assembled and wired starters and pilot devices provide the convenience of a single catalog number and shorter control panel bill of material.

SERIES E630 ENCLOSED DOL STARTERS

series
E630

Factory assembled and wired starters and pilot devices provide the convenience of a single catalog number and shorter control panel bill of material.

Proven

Enclosures are UL Listed and CE marked and our Motor Control devices are UL Listed and CE marked meeting global standards requirements.

Modular Design

Direct mounting of a Series 300 Contactor and a Series 320 Overload Relay. The modular design allows Series 300 and Series 330 to be mixed-and-matched in an assembled starter for any combination of a Full-Load Current (FLC) and desired electrical life.

Visible Certifications

Our product certifications and electrical ratings are clearly marked on the outside of the devices for easy reference during installation.

Compact

Small size allows for installation into applications where space is a premium.

High Fault Short Circuit Current Rating

Available 100kA @ 480V and 600V with class J fuses for Series 300 Contactors and Series 320 Overload Relays, and up to 50kA at 480V for Series 330 Motor Protection Circuit Breakers.

Added Safety

IP20 guarded terminals with dual terminal markings prevent accidental contact with live parts.

Integral Contacts

Integral auxiliary contacts, 1 NO or 1 NC, standard on all c3controls 9A to 18A contactors.

Common Accessories

Utilize common accessories reducing inventory and simplifying installation and assembly.

See pages 106-115, 140-149 & 176-194
to configure our Enclosed Motor Controls.

22MM IEC COMPACT CONTROL STATIONS

Within our extensive product portfolio is our line of 22mm IEC Compact Control Stations, just one example of our superior product quality. Every one of our products is designed and manufactured to meet the needs of the machine builder. Check out all the features of our 22mm IEC Compact Control Stations below!

SEAMLESS COMPATIBILITY



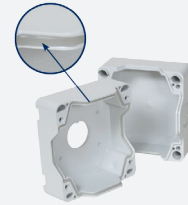
The compact design of our polycarbonate enclosure is a custom fit specifically optimized for use with our 22mm IEC pilot and signaling devices—leading the industry with the shortest depth behind the panel of any U.S. manufacturer.

MULTIPLE CIRCUITS



Our snap-on contact blocks are available up to one deep and three across providing multiple circuits in a compact space.

ENVIRONMENTALLY SECURE



The panel gasket provides an environmentally secure fit—creating a squeegee effect and forming a permanent watertight seal that provides Type 4/4X and IP66 ingress protection.

Proven

UL Listed and rated Type 1, 2, 3, 3R, 4/4X, 12, 13 and IP66, making them suitable for the most demanding applications – including frequent wash-down and varying temperatures from -40 to +55° C.

Convenience

Factory assembled 22mm IEC compact control stations provide the convenience of a single catalog number, no assembly required, shorter control panel bill of materials, and easier inventory management.

Rugged Construction

The rugged lightweight design of our polycarbonate enclosure is resistant against high impact, UV and corrosion.

Compact Design

Smaller size enclosure, and factory assembled pilot devices combine to provide a lower cost control station with superior performance.

Multiple Circuits

Our snap-on contact blocks are available up to one deep and three across providing multiple circuits in a compact space.

Internal Mounting

We designed the control station so the mounting is internal to the enclosure, eliminating the expense associated with a separate accessory or mounting bracket – reducing the footprint and keeping it compact.

Multi-Voltage Modules

Our non-relampable and relampable multi-voltage light modules were designed to operate from 20V to 277V AC or DC without losing light intensity and can be used with any 22mm IEC illuminated operator – significantly reducing inventory costs and simplifying installation.

Sleek Design




Our 22mm IEC pilot devices are manufactured to be the highest quality – inside and out. With their tough polyester construction and aluminum bezel, you know you are getting the quality you deserve.

See pages 311-314 to configure our Compact Control Stations.

CONTROL STATIONS

All our products are fully certified, rated, and backed by our limited lifetime warranty to meet the needs of the machine builder, and our Series EC Control Stations are no exception. Check out the incredible features in the chart below!

DELIVERING SUPERIOR PRODUCT QUALITY AND MANUFACTURING EXCELLENCE

✓ Proven	UL Listed and CSA certified.	  
✓ Durable Construction	Available in polyester, polycarbonate, and die-cast aluminum in a variety of ranges.	
✓ Standard Control Stations	Our most popular control stations are available as standard in five sizes and up to three units—guaranteed for same-day shipping.	
✓ Custom Control Stations	Specify your needs, and c3controls will configure, assemble and ship it as a single unit.	
✓ Flexibility	We offer the flexibility of standard assembled control stations with 30mm and 22mm pilot devices as well as enclosed motor control assemblies, enclosed disconnect switches and enclosed motor protection circuit breakers. You can also order an enclosure with up to four holes you'll assemble yourself.	
✓ Easy to Install	Fully assembled and ready to use out of the box.	
✓ General Use	We've designed our polyester control stations for common electrical and electronic applications.	
✓ Modular Design	Our 30mm and 22mm pilot devices' interchangeable modular design provides endless options for operator interface—reducing inventory.	
✓ Environmentally Secure	A variety of seals keep dust and moisture out of our enclosures.	
✓ Conduit Hubs	Conduit hubs are available in unthreaded PVC as well as aluminum and galvanized steel. You can also order an enclosure with the conduit hole without the hub.	
✓ Limited Lifetime Warranty*	Every product is backed by our limited lifetime warranty—unmatched in the industry—bringing you quality components that perform in the most demanding applications.	
✓ Guaranteed Availability*	Any order for standard catalog items received by 6:00pm ET is guaranteed to ship same-day. NOTE: Custom Control Stations and Enclosed Motor Control assemblies are not available for guaranteed same-day shipping.	
✓ Advantage Pricing	Our approach to product development, manufacturing, and focus on servicing the OEM and Electrical Equipment Builder reduces cost. The result—the best value in the industry.	

*See c3controls Terms & Conditions

“c3controls offers a point of differentiation providing desirable and reliable products that meet a price point affording us a competitive advantage to stay ahead of the game.

Scott Morasch, President • **Isaacs & Associates, Inc.**

”

Polyester



Polycarbonate



Die-Cast Aluminum



UNIQUE PRODUCT LINE FEATURES

ENCLOSURES



Available in polyester, polycarbonate, and die cast aluminum—all with durable construction and guaranteed for same-day shipping.

STANDARD CONTROL STATIONS



One unit Emergency Stop red mushroom push button and two unit red and green push button control stations are available for guaranteed same-day shipping.

CUSTOM CONTROL STATIONS



Configure custom control stations in a variety of sizes and materials and we'll assemble it for you. Call for details. Note: Not available for guaranteed same-day shipping.

**FIND IT
FAST**

Enclosed Control & Control Stations



- Certifications
- Specifications
- Dimension Drawings
- Installation Instructions
- Easy to Buy

www.c3controls.com

POLYESTER ENCLOSURES AND CONTROL STATIONS



NOTE: Design subject to change without notice.
Consult factory for current list price and dimensions.

DISCOUNT
SCHEDULE **E**

CONSTRUCTION

- Available for 30mm and 22mm pilot devices.
- Solid fiberglass reinforced polyester construction, lightweight with high impact resistance.
- Non-conductive double insulated material.
- Formed-In-Place (FIP) continuous polyurethane gasket that provides a complete watertight, dust tight environmental seal.
- Recessed captive 316 Series stainless steel cover screws.
- Designed for general electrical and electronic applications and any application that has an associated environmental concern.
- Soft edge design reduces dust and other particle corrosion.
- Watertight, non corrosive, environmental design.
- UV and chemical resistant.
- Punched enclosures feature notched keyholes for both 30mm and 22mm styles.
- Standard color: RAL 7035
- Our standard enclosures featured on this page are available for guaranteed same-day shipping, our custom control stations and enclosed motor control assemblies are not.
- Available as fully-assembled control stations.

RATINGS / APPROVALS

- Type 1, 2, 3, 3R, 4X, 12, 13, and IP66
- RoHS Compliant

30MM POLYESTER STANDARD ENCLOSURES

CODE	# OF UNITS	FRAME DIMENSIONS (H x W x D)	COLOR	LIST
CS1	1	6-3/4" x 3-15/16" x 3-7/8" (171mm x 100mm x 98mm)	RAL 7035	\$108.00
CS2	2	6-3/4" x 3-15/16" x 3-7/8" (171mm x 100mm x 98mm)	RAL 7035	\$112.00
CS3	3	9" x 3-15/16" x 3-7/8" (228mm x 100mm x 98mm)	RAL 7035	\$120.00

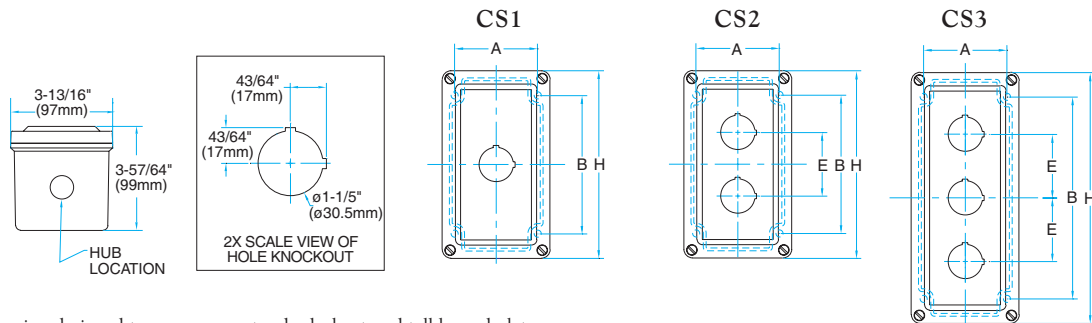
22MM POLYESTER STANDARD ENCLOSURES

CODE	# OF UNITS	FRAME DIMENSIONS (H x W x D)	COLOR	LIST
22CS1	1	6-3/4" x 3-15/16" x 3-7/8" (171mm x 100mm x 98mm)	RAL 7035	\$108.00
22CS2	2	6-3/4" x 3-15/16" x 3-7/8" (171mm x 100mm x 98mm)	RAL 7035	\$112.00
22CS3	3	6-3/4" x 3-15/16" x 3-7/8" (171mm x 100mm x 98mm)	RAL 7035	\$120.00
22CS4	4	9" x 3-15/16" x 3-7/8" (228mm x 100mm x 98mm)	RAL 7035	\$140.00

UNPUNCHED POLYESTER STANDARD ENCLOSURES

CODE	FRAME DIMENSIONS (H x W x D)	COLOR	LIST
AM743SF	6-3/4" x 3-15/16" x 3-7/8" (171mm x 100mm x 98mm)	RAL 7035	\$100.00
AM943SF	9" x 3-15/16" x 3-7/8" (228mm x 100mm x 98mm)	RAL 7035	\$112.00

NOTE: Mounting feet available, consult factory.

30MM POLYESTER ENCLOSURES AND CONTROL STATIONS

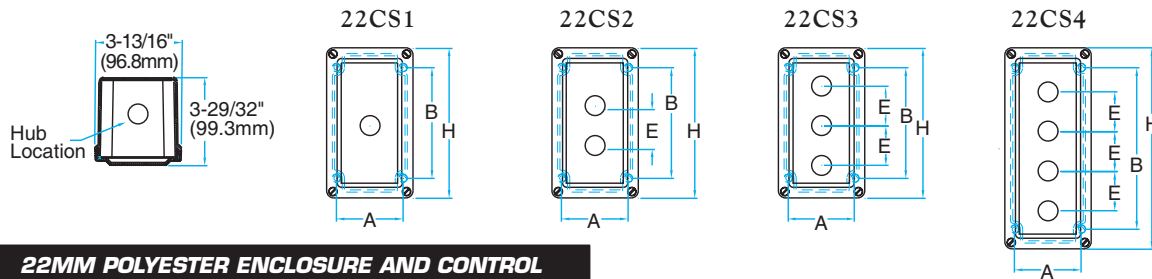
- Spacing designed to accompany standard, short and tall legend plates.
- All operator holes are 1-1/5" (30.5mm) diameter.
- See hub chart below for hub options and drilled hole sizes. All hubs are centered on bottom face of custom enclosures unless otherwise specified.
- Polyester enclosure depth accommodates two 30mm contact blocks deep for a total of four circuits.
- When using a mechanical interlock, enclosure must be ordered with 2" (50.8mm) centers. Consult factory.

30MM POLYESTER HUB SIZE

HUB TYPE	CONDUIT SIZE	DRILL HOLE SIZE
GALVANIZED G50	1/2" (12.7mm)	7/8" (22.5mm)
GALVANIZED G75	3/4" (19.1mm)	1-1/16" (57.2mm)
GALVANIZED G10	1" (25.4mm)	1-5/16" (33.3mm)
ALUMINUM A50	1/2" (12.7mm)	7/8" (22.5mm)
ALUMINUM A75	3/4" (19.1mm)	1-1/16" (57.2mm)
ALUMINUM A10	1" (25.4mm)	1-5/16" (33.3mm)
PVC (NO THREAD) P50	1/2" (12.7mm)	7/8" (22.5mm)
PVC (NO THREAD) P75	3/4" (19.1mm)	1-1/16" (57.2mm)
PVC (NO THREAD) P10	1" (25.4mm)	1-5/16" (33.3mm)

30MM POLYESTER ENCLOSURE AND CONTROL STATION SIZES & HOLE LOCATIONS

PART #	H	A	B	E
CS1	6.74" (171mm)	3.31" (84mm)	6.13" (156mm)	—
CS2	6.74" (171mm)	3.31" (84mm)	6.13" (156mm)	2.25" (57mm)
CS3	8.99" (228mm)	3.31" (84mm)	8.31" (211mm)	2.25" (57mm)

22MM POLYESTER ENCLOSURES AND CONTROL STATIONS**22MM POLYESTER ENCLOSURE AND CONTROL STATION SIZES & HOLE LOCATIONS**

PART #	H	A	B	E
22CS1	6.74" (171mm)	3.31" (84mm)	6.13" (156mm)	—
22CS2	6.74" (171mm)	3.31" (84mm)	6.13" (156mm)	2.25" (57mm)
22CS3	6.74" (171mm)	3.31" (84mm)	6.13" (156mm)	1.75" (44.5mm)
22CS4	8.99" (228mm)	3.31" (84mm)	8.31" (211mm)	1.75" (44.5mm)

22MM POLYESTER HUB SIZE

See 30mm Polyester Hub Size chart above for hub type, conduit size and drill hole size.

- Spacing designed to accompany standard and short legend plates. Consult the factory for tall, jumbo and special legend plate options.
- All operator holes are 7/8" (22.5mm) diameter.
- See hub chart on left for hub options and drilled hole sizes. All hubs are centered on bottom face of custom enclosures unless otherwise specified.
- Polyester enclosure depth accommodates three 22mm IEC contact blocks deep.
- When using a mechanical interlock (22mm NEMA only), enclosure must be ordered with 2" (50.8mm) centers. Consult factory.

POLYCARBONATE ENCLOSURES AND CONTROL STATIONS



DISCOUNT
SCHEDULE

E

NOTE: Design subject to change without notice. Consult factory for current list price and dimensions.



CONSTRUCTION

- Available for 30mm and 22mm pilot devices, and disconnect switches.
- Rugged polycarbonate construction, high quality and sealed.
- High temperature neoprene gasket.
- Highly efficient seal provides ingress protection against dust and moistures.
- For greater mechanical protection, the cover gasket is housed in a recess in the lid which mates up with a tongue.
- Standard quarter turn quick release lid fixings.
- Oil and corrosion resistant.
- Standard color: Light Grey

- Our standard enclosures featured on this page are available for guaranteed same-day shipping, our custom control stations and enclosed motor control assemblies are not.

RATINGS / APPROVALS

- Type 1, 4/4X, 12 and IP65
- IP65 protection for watertight and dust-tight construction
- Application Temperature Range: -40 to 80° C (-40° to 176° F)

30MM POLYCARBONATE STANDARD ENCLOSURES (NOT RECOMMENDED FOR H-LINE)

CODE	# OF UNITS	LIST
PC1	1	\$ 76.00
PC2	2	\$ 80.00
PC3	3	\$104.00

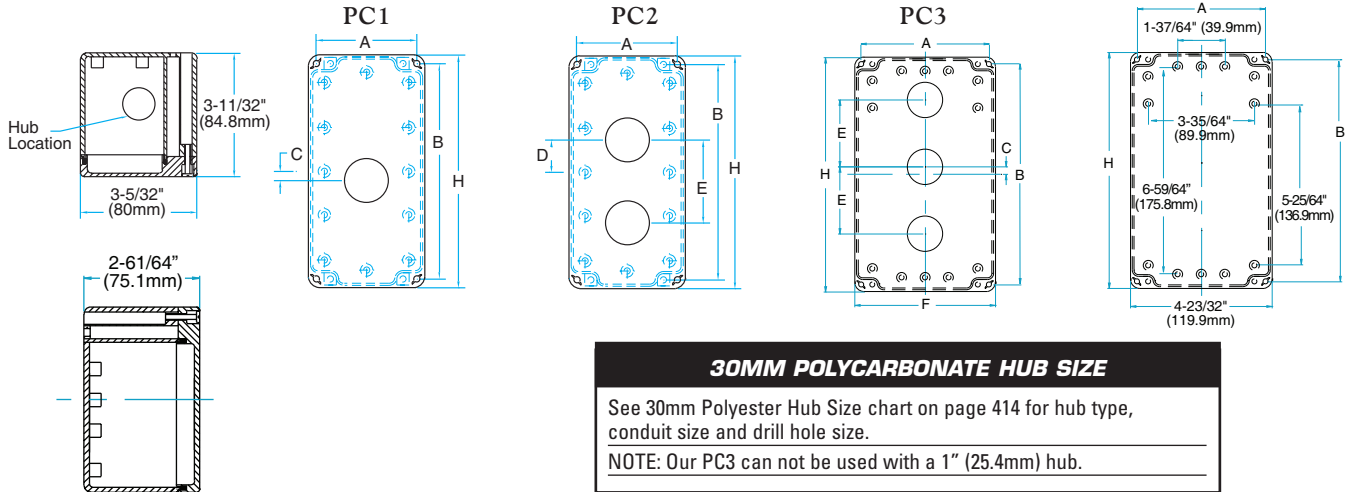
22MM POLYCARBONATE STANDARD ENCLOSURES

CODE	# OF UNITS	LIST
22PC1	1	\$ 76.00
22PC2	2	\$ 80.00
22PC3	3	\$104.00

DISCONNECTS POLYCARBONATE STANDARD ENCLOSURES

CODE	# OF UNITS	LIST
PCDSEN	Up to 3 Poles	\$ 64.00
PCDSEN45	Up to 5 Poles	\$104.00

30MM POLYCARBONATE ENCLOSURES AND CONTROL STATIONS



30MM POLYCARBONATE HUB SIZE

See 30mm Polyester Hub Size chart on page 414 for hub type, conduit size and drill hole size.

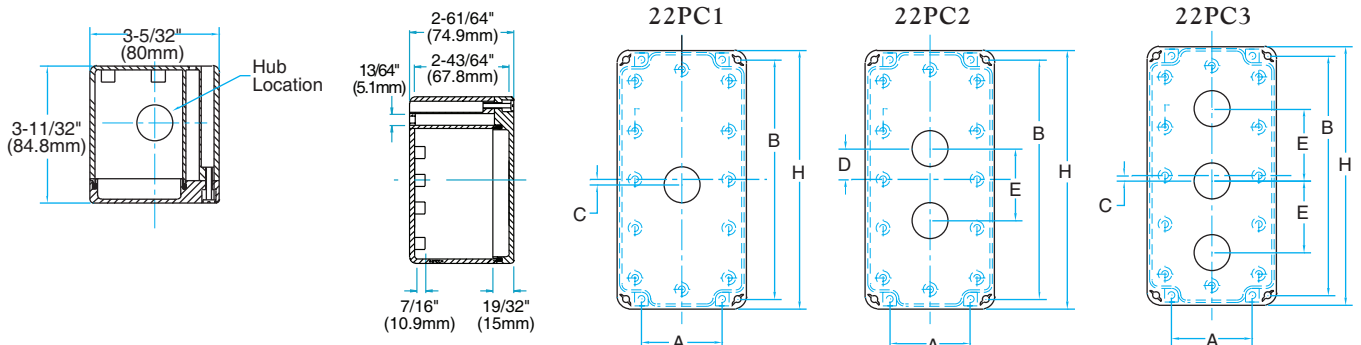
NOTE: Our PC3 can not be used with a 1" (25.4mm) hub.

30MM POLYCARBONATE ENCLOSURE AND CONTROL STATION SIZES & HOLE LOCATIONS

PART #	H	A	B	C	D	E	F
PC1	6-19/64" (160mm)	2-23/32" (69.1mm)	5-53/64" (148.1mm)	1/4" (6.4mm)	—	—	—
PC2	6-19/64" (160mm)	2-23/32" (69.1mm)	5-53/64" (148.1mm)	—	7/8" (22.2mm)	2-1/4" (57.2mm)	—
PC3	7-7/8" (200.2mm)	4-19/64" (109.2mm)	7-13/33" (188.2mm)	1/4" (6.4mm)	—	2-1/4" (57.2mm)	4-47/64" (120.1mm)

- Spacing designed to accompany standard, short and tall legend plates.
- All operator holes are 1-3/16" (30.2mm) diameter.
- See hub chart for hub options and drilled hole sizes. All hubs are centered on bottom face of custom enclosures unless otherwise specified.
- When using a mechanical interlock, enclosure must be ordered with 2" (50.8mm) centers. Consult factory.

22MM POLYCARBONATE ENCLOSURES AND CONTROL STATIONS



22MM POLYCARBONATE HUB SIZE

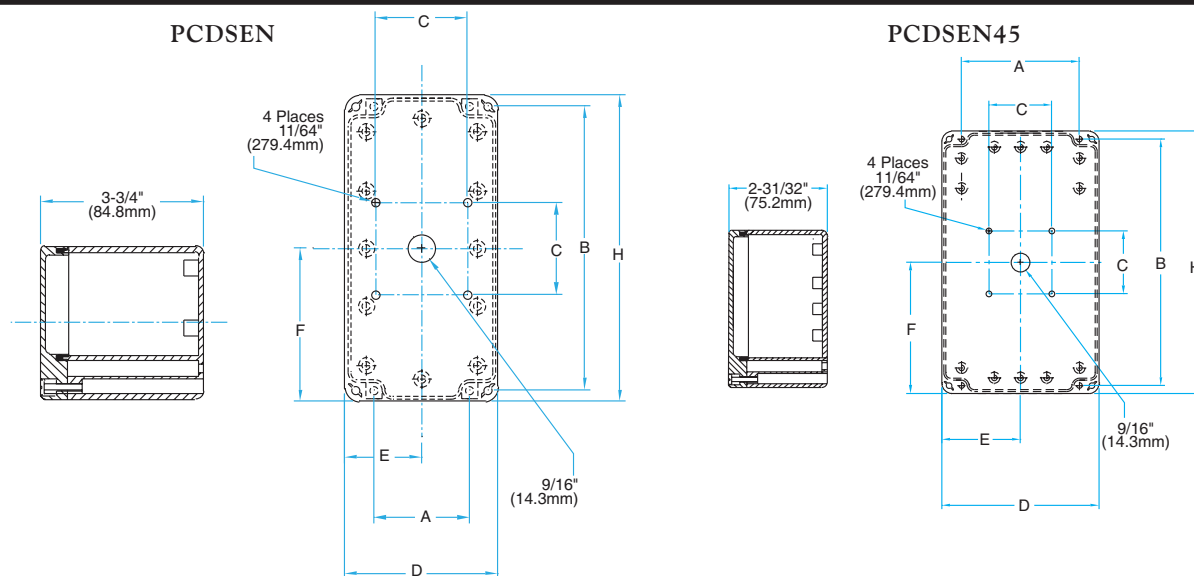
See 22mm Polyester Hub Size chart on page 414 for hub type, conduit size and drill hole size.

22MM POLYCARBONATE ENCLOSURE AND CONTROL STATION SIZES & HOLE LOCATIONS

PART #	H	A	B	C	D	E
22PC1	6-19/64" (160mm)	1-31/32" (50mm)	5-53/64" (148.1mm)	1/8" (3.2mm)	—	—
22PC2	6-19/64" (160mm)	1-31/32" (50mm)	5-53/64" (148.1mm)	—	3/4" (19.1mm)	1-3/4" (44.4mm)
22PC3	6-19/64" (160mm)	1-31/32" (50mm)	5-53/64" (148.1mm)	1/8" (3.2mm)	—	1-3/4" (44.4mm)

- Spacing designed to accompany standard and short legend plates, consult the factory for tall, jumbo and special legend plate options.
- All operator holes are 7/8" (22.5mm) diameter.
- See hub chart for hub options and drilled hole sizes. All hubs are centered on bottom face of custom enclosures unless otherwise specified.
- Polycarbonate enclosure depth accommodates one 22mm IEC contact block deep when using a 22mm IEC selector switch or two 22mm IEC contact blocks deep with all other 22mm IEC pilot devices. 22mm NEMA pilot devices may use up to three contact blocks deep.
- When using a NEMA mechanical interlock, enclosure must be ordered with 2" (50.8mm) centers. Consult factory.

DISCONNECT POLYCARBONATE ENCLOSURES AND CONTROL STATIONS



- See hub chart for hub operators and drilled hole sizes. All hubs are centered on bottom face of custom enclosures unless otherwise specified.

DISCONNECT POLYCARBONATE HUB SIZE

See 30mm Polyester Hub Size chart on page 414 for hub type, conduit size and drill hole size.

NOTE: Our PCDSen45 can not be used with a 1" (25.4mm) hub.

**DISCONNECT POLYCARBONATE ENCLOSURE AND CONTROL STATION
SIZES & HOLE LOCATIONS**

PART #	H	A	B	C	D	E	F
PCDSen	6-19/64" (160mm)	1-31/32" (50mm)	5-53/64" (148.1mm)	1-27/64" (36mm)	3-5/32" (80mm)	1-37/64" (40.1mm)	3-5/32" (80mm)
PCDSen45	7-7/8" (200.2mm)	3-35/64" (90.2mm)	7-13/32" (187.9mm)	1-27/64" (36mm)	4-47/64" (120.1mm)	2-23/64" (59.9mm)	3-15/16" (100.1mm)

DIE CAST ALUMINUM ENCLOSURES AND CONTROL STATIONS
**DISCOUNT
SCHEDULE E**


NOTE: Design subject to change without notice. Consult factory for current list price and dimensions.

CONSTRUCTION

- Available for 30mm and 22mm pilot devices, and disconnect switches.
- Die cast aluminum alloy construction.
- High temperature neoprene gaskets are oil and petroleum resistant.
- Highly efficient seal provides ingress protection against dust and moistures.
- For greater mechanical protection, the cover gasket is housed in a recess in the lid which mates up with a tongue.
- Oil and corrosion resistant.
- Stainless steel captive lid retaining screws.
- Standard finish: Smooth powder coat grey
- Our standard enclosures featured on this page are available for guaranteed same-day shipping, our custom control stations and enclosed motor control assemblies are not.

RATINGS / APPROVALS

- 30mm and 22mm Die Cast Enclosures are rated Type 1, 3R, 4, 12, IP66 and IP67
- Disconnect Die Cast Enclosures are rated Type 4/4X, IP66 and IP67
- IP67 protection with a working temperature within -40 to 80° C (-40 to 176° F)

30MM DIE CAST ALUMINUM STANDARD ENCLOSURES (NOT RECOMMENDED FOR H-LINE)

CODE	# OF UNITS	FRAME DIMENSIONS (H x W x D)	COLOR	LIST
DC1	1	4-59/64" x 3-5/32" x 2-9/32" (125mm x 80mm x 57.9mm)	Smooth Powder Coat Grey	\$130.00
DC2	2	6-7/8" x 3-5/32" x 2-9/32" (174.75mm x 80mm x 57.9mm)	Smooth Powder Coat Grey	\$150.00
DC3	3	9-13/16" x 3-5/32" x 2-9/32" (249.2mm x 80mm x 57.9mm)	Smooth Powder Coat Grey	\$190.00

22MM DIE CAST ALUMINUM STANDARD ENCLOSURES)

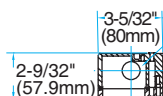
CODE	# OF UNITS	FRAME DIMENSIONS (H x W x D)	COLOR	LIST
22DC1	1	4-59/64" x 3-5/32" x 2-9/32" (125mm x 80mm x 57.9mm)	Smooth Powder Coat Grey	\$130.00
22DC2	2	4-59/64" x 3-5/32" x 2-9/32" (125mm x 80mm x 57.9mm)	Smooth Powder Coat Grey	\$130.00
22DC3	3	6-5/8" x 3-5/32" x 2-9/32" (168.4mm x 80mm x 57.9mm)	Smooth Powder Coat Grey	\$150.00

DISCONNECTS DIE CAST ALUMINUM STANDARD ENCLOSURES)

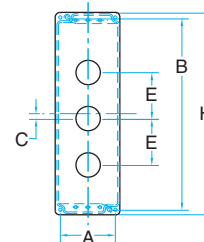
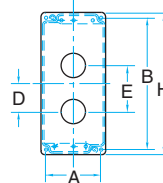
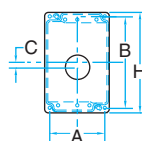
CODE	# OF UNITS	FRAME DIMENSIONS (H x W x D)	COLOR	LIST
DCSEN45	Up to 5 Poles	8-43/64" x 4-23/32" x 3-9/64" (220.2mm x 120mm x 80mm)	Smooth Powder Coat Grey	\$180.00

30MM DIE CAST ALUMINUM ENCLOSURES AND CONTROL STATIONS

- Spacing designed to accompany standard, short and tall legend plates.
- All operator holes are 1-3/16" (30.2mm) diameter.
- See hub chart below for hub options and drilled hole sizes. All hubs are centered on bottom face of custom enclosures unless otherwise specified.
- Die cast enclosure depth accommodates one contact block.
- When using a mechanical interlock, enclosure must be ordered with 2" (50.8mm) centers. Consult factory.



Hub Location



30MM DIE CAST HUB SIZE

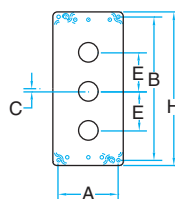
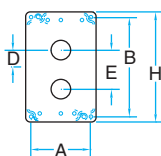
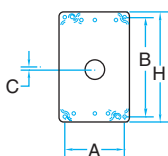
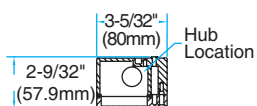
HUB TYPE	CONDUIT SIZE	DRILL HOLE SIZE
GALVANIZED G50	1/2" (12.7mm)	7/8" (22.5mm)
ALUMINUM A50	1/2" (12.7mm)	7/8" (22.5mm)
PVC (NO THREAD) P50	1/2" (12.7mm)	7/8" (22.5mm)

30MM DIE CAST ENCLOSURE AND CONTROL STATION SIZES & HOLE LOCATIONS

PART #	H	A	B	C	D	E
DC1	4-59/64" (125mm)	2-11/16" (68.1mm)	4-29/64" (113mm)	1/4" (6.35mm)	—	—
DC2	6-7/8" (174.75mm)	2-11/16" (68.1mm)	6-13/32" (162.8mm)	—	1-3/8" (34.9mm)	2-1/4" (57.2mm)
DC3	9-13/16" (249.2mm)	2-11/16" (68.1mm)	9-11/32" (237mm)	1/4" (6.35mm)	—	2-1/4" (57.2mm)

22MM NEMA DIE CAST ALUMINUM ENCLOSURES AND CONTROL STATIONS

- Spacing designed to accompany standard and short legend plates, consult the factory for tall, jumbo and special legend plate options.
- All operator holes are 7/8" (22.5mm) diameter.
- See hub chart below for hub options and drilled hole sizes. All hubs are centered on bottom face of custom enclosures unless otherwise specified.
- 3/4" (19.1mm) and 1" (25.4mm) hubs not available, consult factory for options.
- When using a mechanical interlock, enclosure must be ordered with 2" (50.8mm) centers. Consult factory.



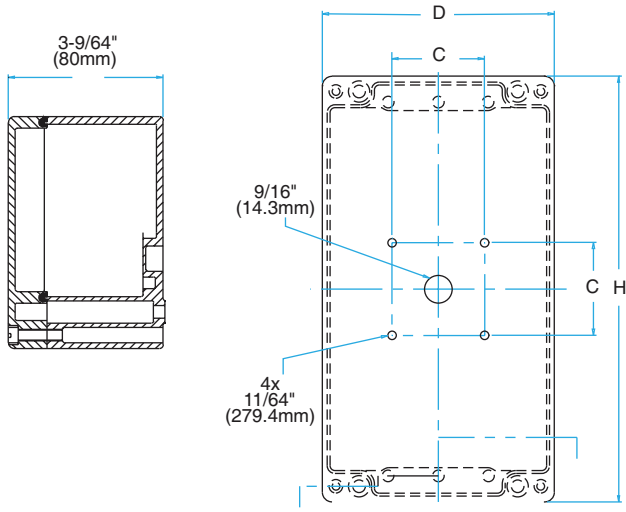
22MM DIE CAST HUB SIZE

HUB TYPE	CONDUIT SIZE	DRILL HOLE SIZE
GALVANIZED G50	1/2" (12.7mm)	7/8" (22.5mm)
ALUMINUM A50	1/2" (12.7mm)	7/8" (22.5mm)
PVC (NO THREAD) P50	1/2" (12.7mm)	7/8" (22.5mm)

22MM DIE CAST ENCLOSURE AND CONTROL STATION SIZES & HOLE LOCATIONS

PART #	H	A	B	C	D	E
22DC1	4-59/64" (125mm)	2-11/16" (68.1mm)	4-29/64" (113mm)	1/8" (3.2mm)	—	—
22DC2	4-59/64" (125mm)	2-11/16" (68.1mm)	4-29/64" (113mm)	—	3/4" (19.1mm)	1-3/4" (44.5mm)
22DC3	6-5/8" (168.4mm)	2-11/16" (68.1mm)	6-13/32" (162.8mm)	1/8" (3.2mm)	—	1-3/4" (44.5mm)

DISCONNECT DIE CAST ALUMINUM ENCLOSURES AND CONTROL STATIONS



- See hub chart below for hub operators and drilled hole sizes. All hubs are centered on bottom face of custom enclosures unless otherwise specified.

DISCONNECT DIE CAST HUB SIZE

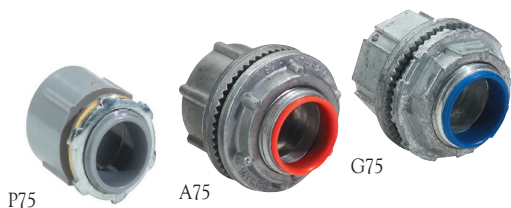
HUB TYPE	CONDUIT SIZE	DRILL HOLE SIZE
GALVANIZED G50	1/2" (12.7mm)	7/8" (22.5mm)
GALVANIZED G75	3/4" (19.1mm)	1-1/16" (57.2mm)
ALUMINUM A50	1/2" (12.7mm)	7/8" (22.5mm)
ALUMINUM A75	3/4" (19.1mm)	1-1/16" (57.2mm)
PVC (NO THREAD) P50	1/2" (12.7mm)	7/8" (22.5mm)
PVC (NO THREAD) P75	3/4" (19.1mm)	1-1/16" (57.2mm)

DISCONNECT DIE CAST ENCLOSURE AND CONTROL STATION SIZES & HOLE LOCATIONS

PART #	H	C	D
DCDSEN45	8-43/64" (220.2mm)	1-27/64" (36mm)	4-23/32" (120mm)

**VISIT WWW.C3CONTROLS.COM
TO DOWNLOAD CAD DRAWINGS**

CONDUIT HUBS



Hubs may be purchased separately, installed, or conduit hole only may be specified. If hub or conduit hole is specified, location must be indicated on order form.

Because the enclosures are symmetrical, a top hub or hole may be field installed with the hub used for bottom entrance, while side mounting may be used for either left or right entry.

CONDUIT HUBS FOR 30MM, 30MM H-LINE, 22MM AND DISCONNECTS

CONDUIT SIZE	PVC (NO THREAD)			ALUMINUM			GALVANIZED			CONDUIT HOLE ONLY	
	CODE	SEP.	INST.	CODE	SEP.	INST.	CODE	SEP.	INST.	CODE	LIST
1/2"	P50	\$ 4.00	\$16.00	A50	\$19.00	\$31.00	G50	\$19.00	\$31.00	H50	\$ 6.00
3/4"	P75	\$ 6.00	\$18.00	A75	\$20.00	\$32.00	G75	\$20.00	\$32.00	H75	\$ 6.00
1"	P10	\$ 8.00	\$20.00	A10	\$21.00	\$33.00	G10	\$21.00	\$33.00	H10	\$ 6.00

DISCOUNT
SCHEDULE

E

CUSTOM CONTROL STATIONS



We'll configure and assemble enclosure stations in nearly any size and from a variety of materials to your specification. Ordering a custom enclosed control station is simple and offers advantages.

You'll order your custom job under a single catalog number and your control station will arrive already assembled which means a shorter bill of material on your end, saving you installation time and cost. And pre-assembly also makes your inventory easier to manage.

There is a \$4.00 assembly charge per pilot device unit.
Example: A two-unit station will have an assembly charge of \$8.00.

Custom control stations are not available for guaranteed same day shipping. Call us for pricing and an estimated date of delivery.

ADVANTAGES

- ✓ Single catalog number
- ✓ No assembly required
- ✓ Shorter panel bill of material
- ✓ Easier to manage inventory