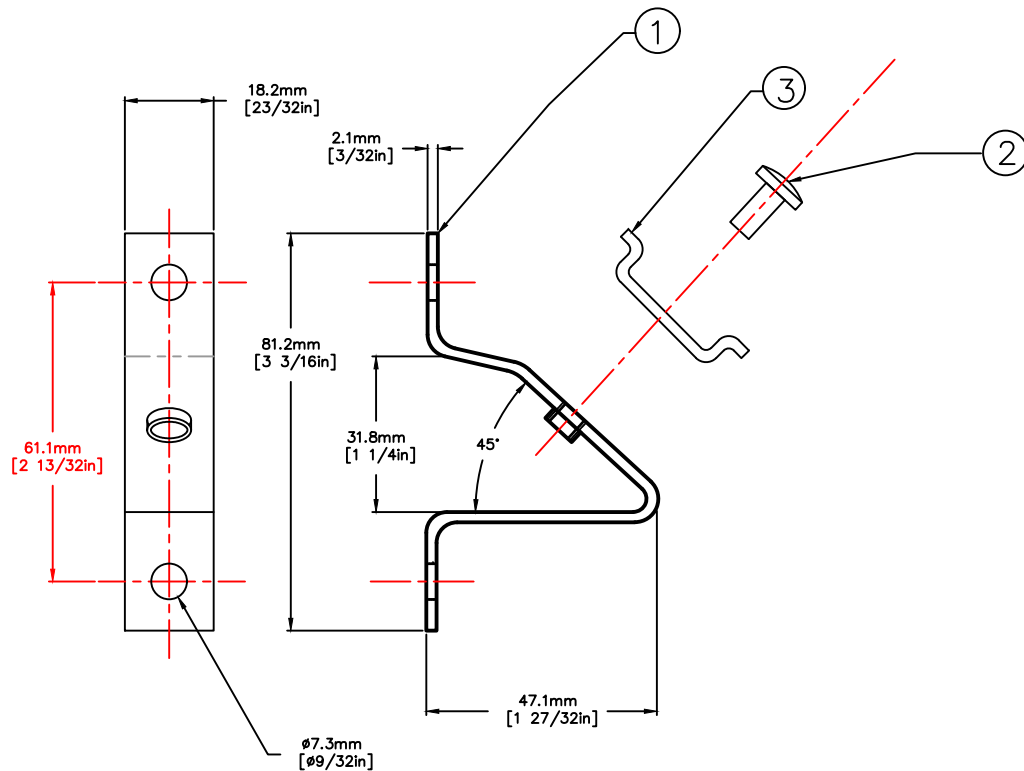


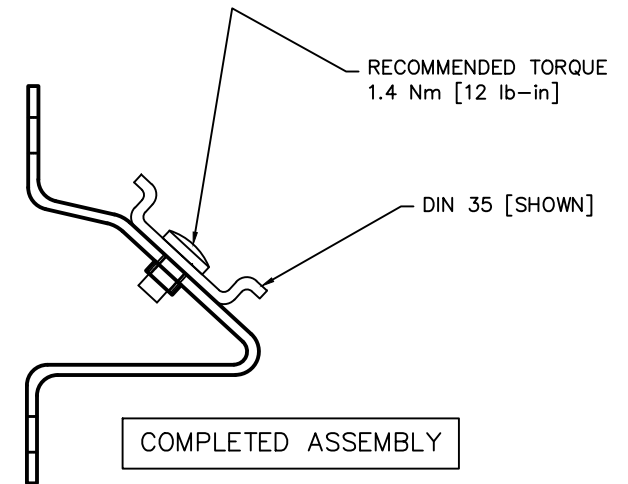
5	XXXX
4	XXXX
3	DIN RAIL - CUT TO LENGTH
2	METRIC SCREW M6 X 1.0 X 10.0 PAN HD
1	STAND-OFF BRACKET [25T10057H01]
Item	Description
DIN RAIL STAND-OFF AND SUPPORT ASSEMBLY	

25T30073G01 - Cat No WTB2-BRKT1



RECOMMEND MOUNTING - (2) SIZE M6 [1/4] MACHINE SCREW MAX

DIMENSIONS ARE FOR REFERENCE PURPOSES



COMPLETED ASSEMBLY

<p>TOLERANCE:</p> <p>.XX +/- 0.02 .XXX +/- 0.005 .XXXX +/- 0.001 ANGLES +/- 0.5 DEG</p> <p>UNLESS OTHERWISE SPECIFIED</p>	 <p>since 1976</p>	
	<p>P.O. BOX 496 BEAVER, PA 15009 www.c3controls.com</p>	
<p>This drawing is the property of c3controls. The drawing may not be copied, used or disclosed, for any purpose except as authorized in writing by c3controls.</p>	<p>Description: DIN RAIL STAND-OFF AND SUPPORT BRACKET 35MM DIN RAIL OUTLINE DIMENSION</p>	
	<p>Drawn By: MIKE KOPKE</p>	<p>Drawing Number:</p>
	<p>Date: 05-27-2008</p>	<p>Scale: 1:1</p>
<p>25T30073-OD</p>		