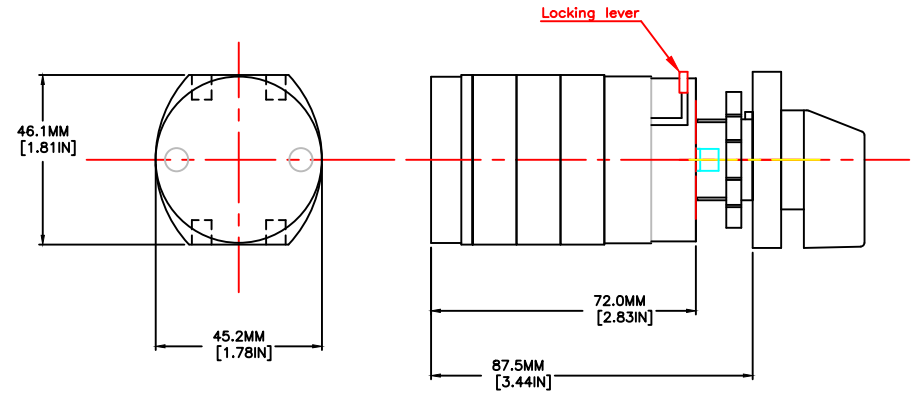
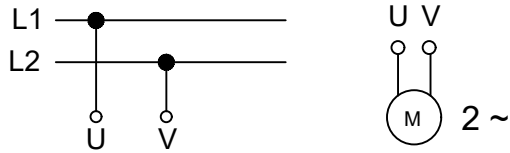
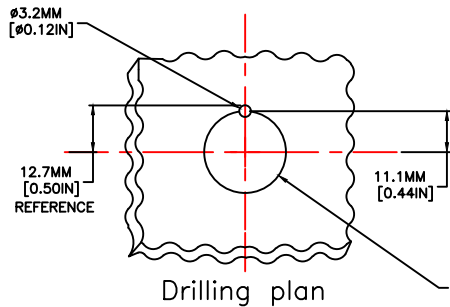
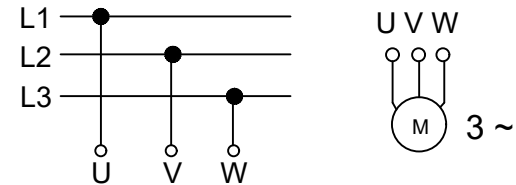


**CODE : 51210**

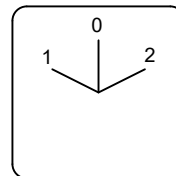
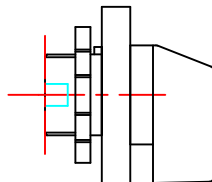


**CODE : 51211**



Drilling plan

L22 HANDLE SHOWN  
ALSO SPECIFY N22




B61

- A. U & V ARE SWITCHING
- B. POSITION 1 = REVERSING  
POSITION 2 = FORWARD  
(REFERS TO OPERATOR PLATE MARKINGS)

16A

**60C10038**

<small>                 TOLERANCE:                  XX +/- 0.02                  XXX +/- 0.05                  XXXX +/- 0.001                  ANGLES +/- 0.5 DEG                  UNLESS OTHERWISE                  SPECIFIED             </small>	
<small>                 P.O. BOX 496 BEAVER, PA 15009 www.c3controls.com             </small>	<small>                 MOTOR REVERSING                  Cam Switch                  SERIES 51210 &amp; 51211                  16A -----Product OUTLINES             </small>
<small>                 This drawing is the property of                  c3controls. The drawing may                  not be copied, used or                  disclosed, for any purpose                  except as authorized in writing                  by c3controls.             </small>	<small>                 Drawn By: RJJ                  Date: 11-13-06 Scale: 1:1                  Drawing Number: 60C10038             </small>

1	M. ROKNICH	REVISED DRAWING TO SHOW U & V SWITCHING	03-26-13
REV#	BY	DESCRIPTION	DATE