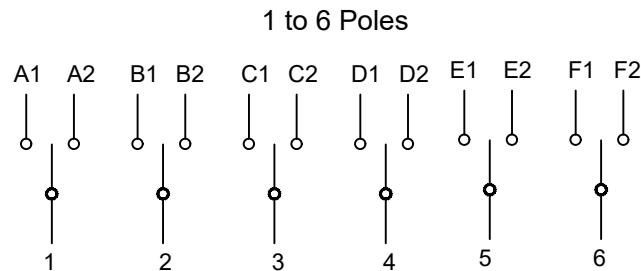
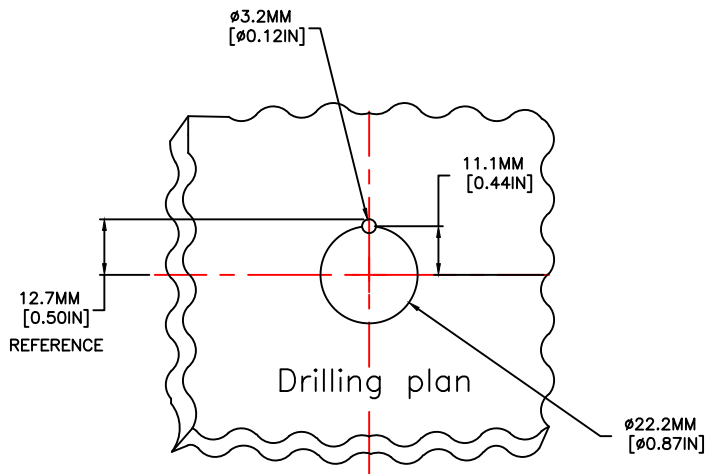
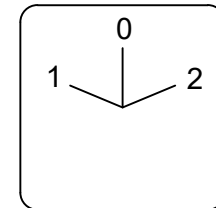


SWITCH DEPTH= SINGLE STAGE + 15 mm PER ADDITIONAL STAGE



Maintained 60°



B61 & C62

25A / 32A

60C10021

CODES: 210\*\*

<p><b>TOLERANCE</b></p> <p>XX +/- 0.02          XXX +/- 0.005          XXXX +/- 0.001          ANGLES +/- 0.5 DEG</p> <p>UNLESS OTHERWISE SPECIFIED</p>	 <p>since 1976</p>
<p>This drawing is the property of c3controls. The drawing may not be copied, used or disclosed, for any purpose except as authorized in writing by c3controls.</p>	<p>Designation: "CHANGEOVER" Cam Switch          SERIES 210XX          25A &amp; 32A          Product OUTLINES</p>
<p>Drawn By: RJJ</p>	<p>Date: 11-10-06 Scale: 1:1 Drawing Number: 60C10021</p>