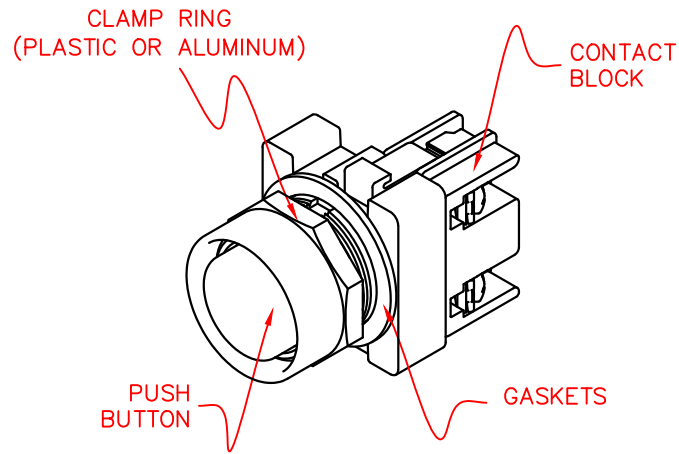
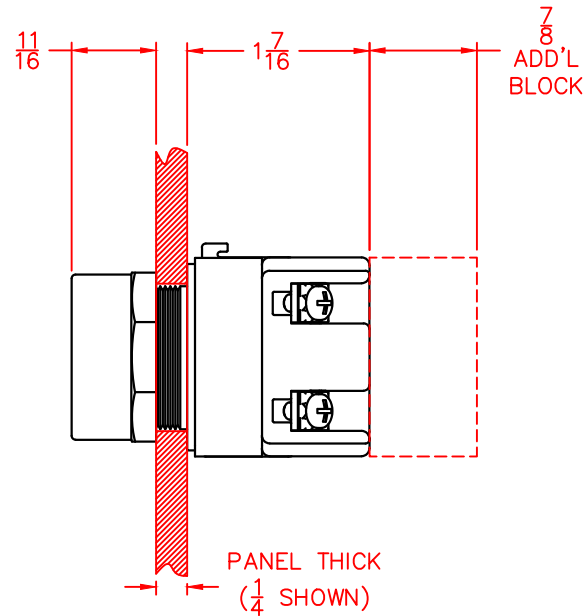
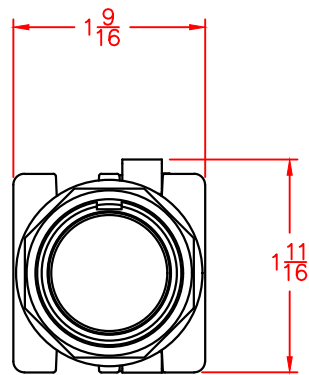


TABLE 1- MOUNTING GASKETS

PANEL THICKNESS	GASKETS*
1/16"	4
1/8"	3
3/16"	2
1/4"	1


* REMOVE ONE ADDITIONAL GASKET WHEN USING A LEGEND PLATE



NOTES:

- 1) MOUNTING HOLE IN PANEL - ϕ 1-3/16 (30MM)
- 2) CHOICE OF ALUMINUM OR PLASTIC CLAMP RING (NEMA 4 OR NEMA 4X).
- 3) MOUNTING HOLE SPACING (FOR STANDARD LEGEND PLATES) - HORIZONTAL & VERTICAL DISTANCE - 2.250 CENTER TO CENTER

REV	DESCRIPTION	DATE	BY
XXX	XXXXXXXXXXXX	XXXX	XXX
XXX	XXXXXXXXXXXX	XXXX	XXX
XXX	XXXXXXXXXXXX	XXXX	XXX
XXX	XXXXXXXXXXXX	XXXX	XXX
XXX	XXXXXXXXXXXX	XXXX	XXX
XXX	XXXXXXXXXXXX	XXXX	XXX

<p>TOLERANCE</p> <p>.XX +/- 0.02 .XXX +/- 0.005 XXXX +/- 0.001 ANGLES +/- 0.5 DEG</p> <p>UNLESS OTHERWISE SPECIFIED</p>		 <p>P.O. BOX 496 BEAVER, PA 15009 www.c3controls.com</p>
<p>This drawing is the property of c3controls. The drawing may not be copied, used or disclosed, for any purpose except as authorized in writing by c3controls.</p>		
<p>Description:</p> <p>30MM PRODUCT LINE GUARDED EXTENDED CAP NON-ILLUMINATED PUSHBUTTON OPERATOR WITH CONTACT BLOCK DATA SHEET</p>		<p>Drawn By: RCG</p> <p>Date: 08-08-2001 Scale: 1:1</p>
<p>Drawing Number:</p> <p>30P10087</p>		