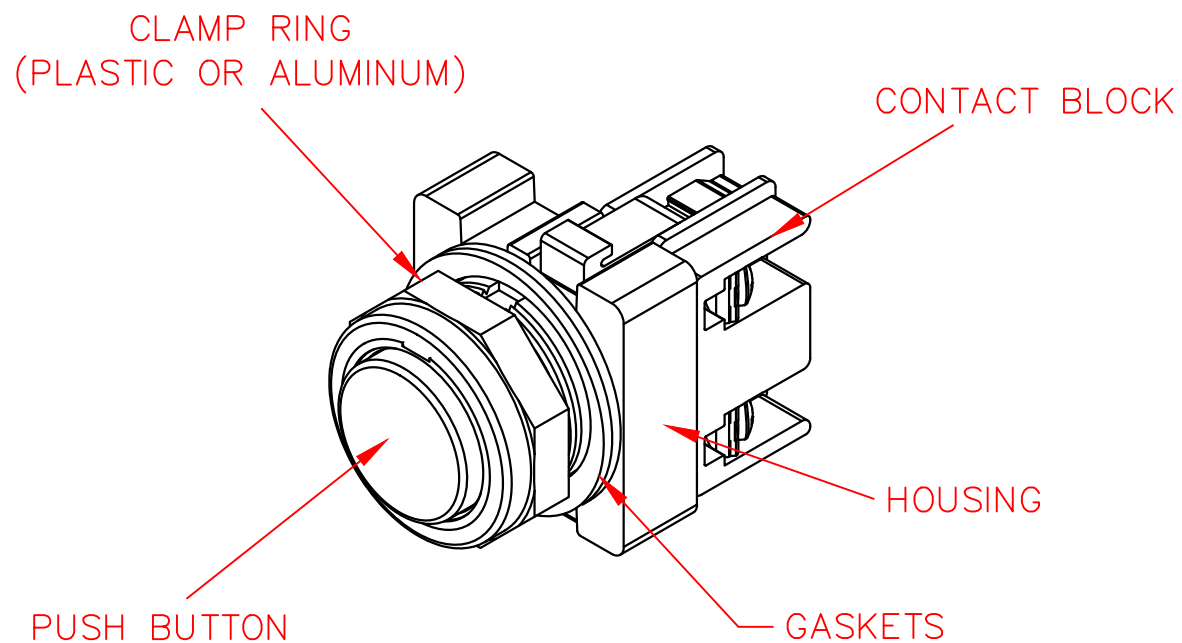


1/0
3/16"
1/4"
2
1
*REMOVE ONE ADD'L GASKET
WHEN USING A LEGEND PLATE



NOTES:

- 1) MOUNTING HOLE IN PANEL – $\phi 1-3/16$ (30MM)
- 2) CHOICE OF ALUMINUM OR PLASTIC CLAMP RING (NEMA 4 OR NEMA 4X).
- 3) MOUNTING HOLE SPACING (FOR STANDARD LEGEND PLATES) – HORIZONTAL & VERTICAL DISTANCE – 2.250 CENTER TO CENTER

XXX	XXXXXXXXXX	XXXX	XXX	30MM PRODUCT LINE EXTENDED PUSH BUTTON OPERATOR W/ CONTACT BLOCK DATA SHEET	
XXX	XXXXXXXXXX	XXXX	XXX		
XXX	XXXXXXXXXX	XXXX	XXX		
XXX	XXXXXXXXXX	XXXX	XXX		
XXX	XXXXXXXXXX	XXXX	XXX		
XXX	XXXXXXXXXX	XXXX	XXX		
REV	DESCRIPTION	DATE	BY	DRAWN BY: RCG	DATE: 08-08-01



CONTROL CONCEPTS CORP.

P.O. BOX 496
664 STATE STREET
BEAVER, PA 15009



SCALE:
1:1

DRAWING NO.
WC100009