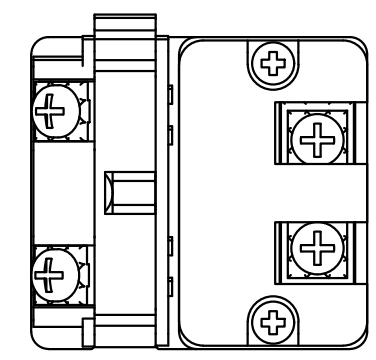
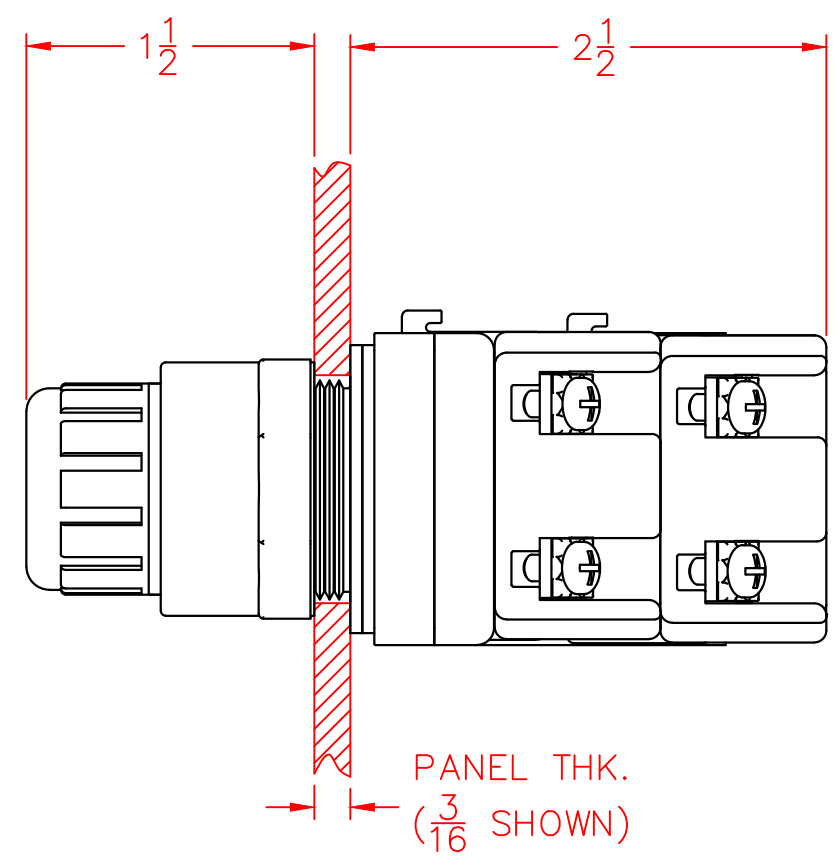
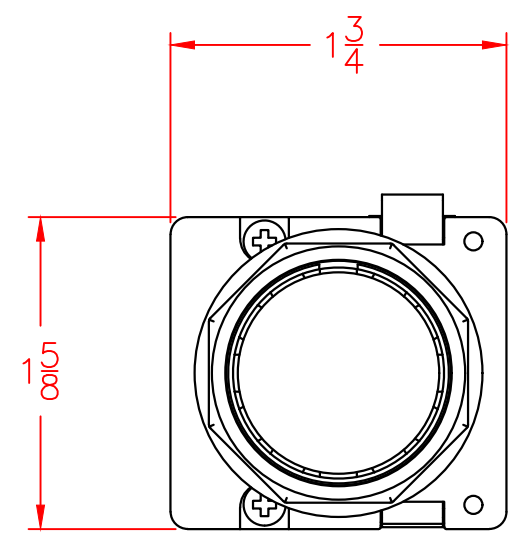


3/16"
1/4"

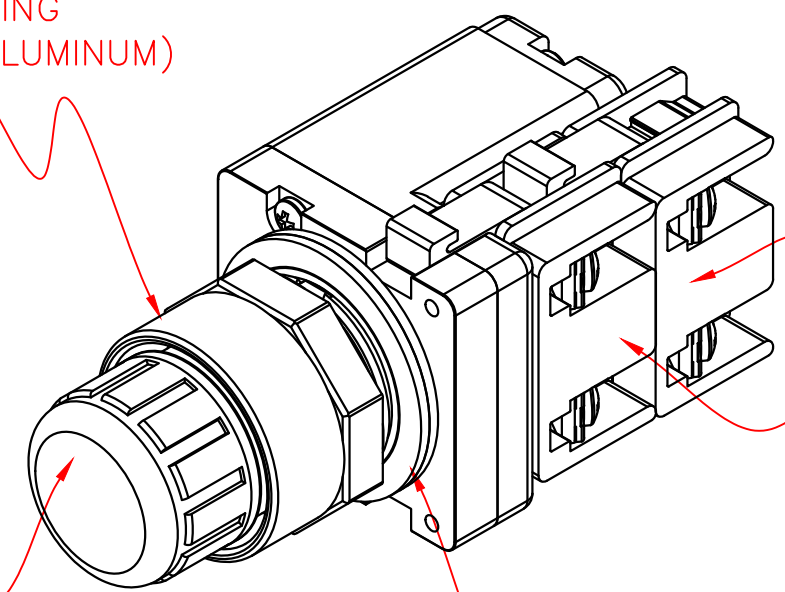
2
1

*REMOVE ONE ADD'L GASKET
WHEN USING A LEGEND PLATE



CLAMP RING
(PLASTIC OR ALUMINUM)

PUSH
BUTTON



CONTACT BLOCKS

GASKETS

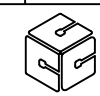
NOTES:

- 1) MOUNTING HOLE IN PANEL - $\phi 1-3/16$ (30MM)
- 2) CHOICE OF ALUMINUM OR PLASTIC CLAMP RING (NEMA 4 OR NEMA 4X).
- 3) MOUNTING HOLE SPACING (FOR STANDARD LEGEND PLATES) - HORIZONTAL & VERTICAL DISTANCE - 2.250 CENTER TO CENTER

XXX	XXXXXXXXXX	XXXX	XXX	30MM PRODUCT LINE PUSH-TO-TEST LIGHT UNIT DATA SHEET	
XXX	XXXXXXXXXX	XXXX	XXX		
XXX	XXXXXXXXXX	XXXX	XXX		
XXX	XXXXXXXXXX	XXXX	XXX		
XXX	XXXXXXXXXX	XXXX	XXX		
XXX	XXXXXXXXXX	XXXX	XXX		
REV	DESCRIPTION	DATE	BY	DRAWN BY: RCG	DATE: 08-15-01

CONTROL CONCEPTS CORP.

P.O. BOX 496
664 STATE STREET
BEAVER, PA 15009



SCALE:
1:1

DRAWING NO.
WC100052