

**NOTES:**

1) MOUNTING HOLE IN PANEL -  $\phi 1-3/16$  (30MM)

2) MOUNTING HOLE SPACING (FOR STANDARD LEGEND PLATES) - HORIZONTAL & VERTICAL DISTANCE - 2.250 CENTER TO CENTER

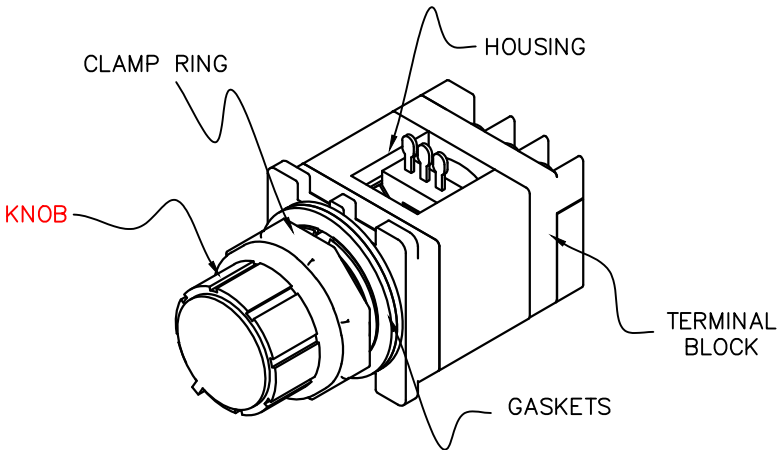
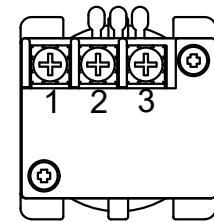
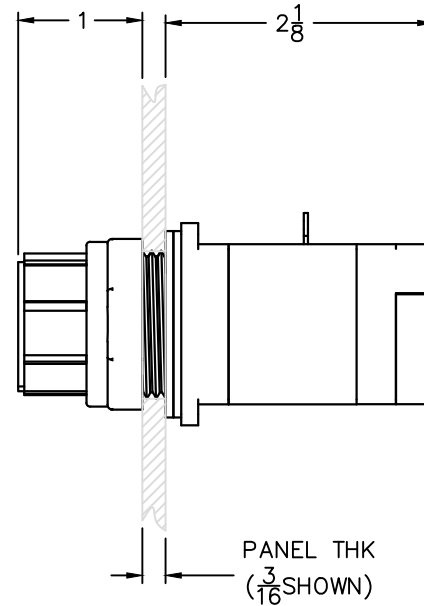
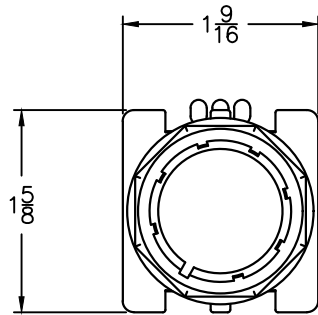
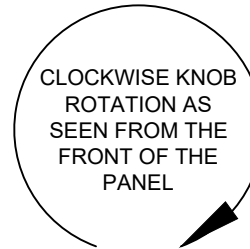


TABLE 1- MOUNTING GASKETS

| PANEL THICKNESS | GASKETS* |
|-----------------|----------|
| 1/16"           | 4        |
| 1/8"            | 3        |
| 3/16"           | 2        |
| 1/4"            | 1        |

\* REMOVE ONE ADDITIONAL GASKET WHEN USING A LEGEND PLATE



2 IS THE COMMON  
 1 → 2 IS DECREASING RESISTANCE ( $\downarrow \Omega$ )  
 3 → 2 IS INCREASING RESISTANCE ( $\uparrow \Omega$ )

|     |              |      |     |
|-----|--------------|------|-----|
| XXX | XXXXXXXXXXXX | XXXX | XXX |
| XXX | XXXXXXXXXXXX | XXXX | XXX |
| XXX | XXXXXXXXXXXX | XXXX | XXX |
| XXX | XXXXXXXXXXXX | XXXX | XXX |
| XXX | XXXXXXXXXXXX | XXXX | XXX |
| REV | DESCRIPTION  | DATE | BY  |

|                                                                                                                                                                            |                         |                                                                                  |
|----------------------------------------------------------------------------------------------------------------------------------------------------------------------------|-------------------------|----------------------------------------------------------------------------------|
| <p><b>TOLERANCE</b><br/>                 .XX +/- 0.02<br/>                 .XXX +/- 0.005<br/>                 .XXXX +/- 0.001<br/>                 ANGLES +/- 0.5 DEG</p> |                         |                                                                                  |
| <p>UNLESS OTHERWISE SPECIFIED</p>                                                                                                                                          |                         |                                                                                  |
| <p>This drawing is the property of c3controls. The drawing may not be copied, used or disclosed, for any purpose except as authorized in writing by c3controls.</p>        |                         | <p>P.O. BOX 496 BEAVER, PA 15009 www.c3controls.com</p>                          |
| <p>Description</p>                                                                                                                                                         |                         | <p>30MM PRODUCT LINE POTENTIOMETER WITH TERMINAL BLOCK ATTACHMENT DATA SHEET</p> |
| <p>Drawn By: RCG</p>                                                                                                                                                       | <p>Date: 10-05-2001</p> | <p>Scale: 1:1</p>                                                                |
| <p>Drawing Number:</p>                                                                                                                                                     |                         | <p>WC100089</p>                                                                  |