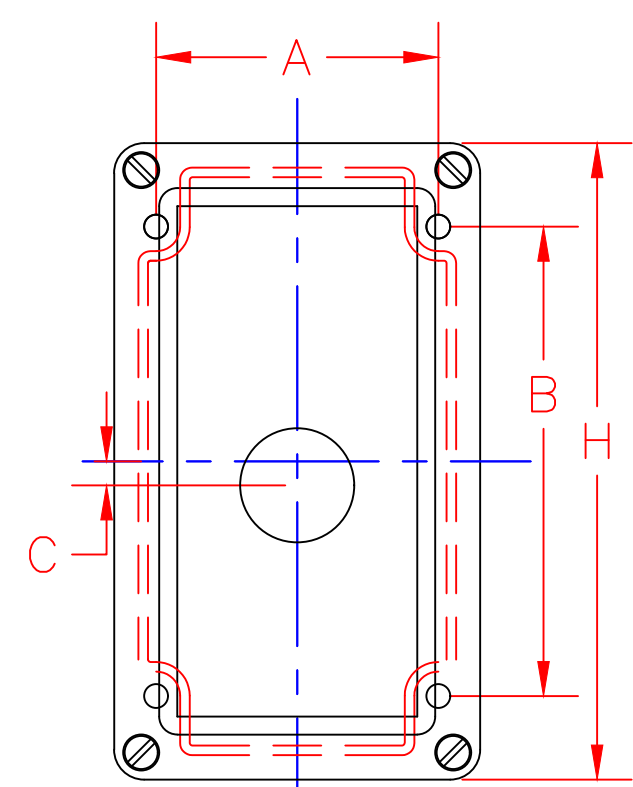
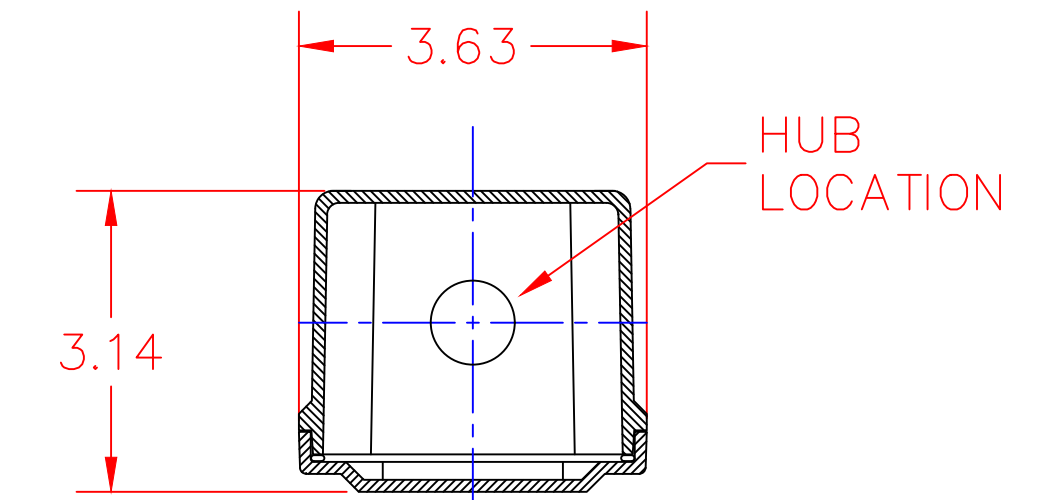
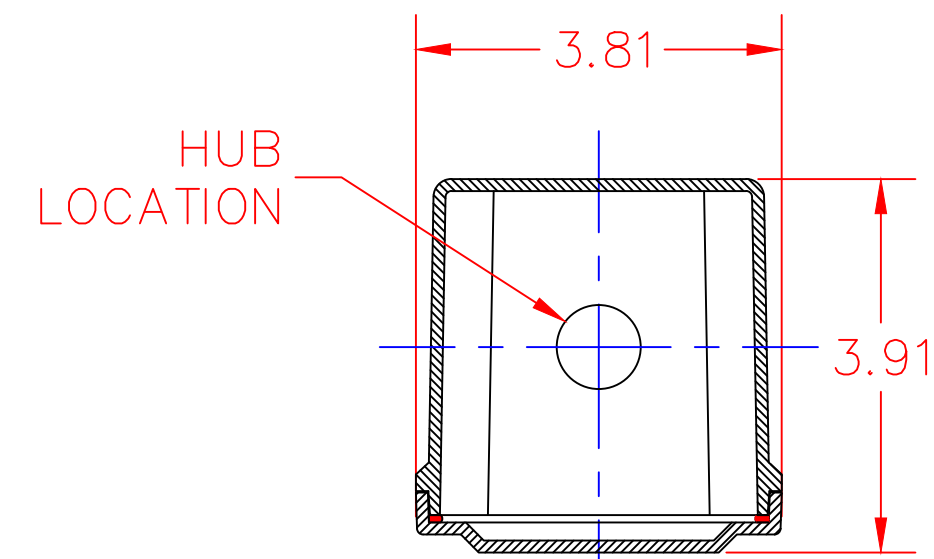
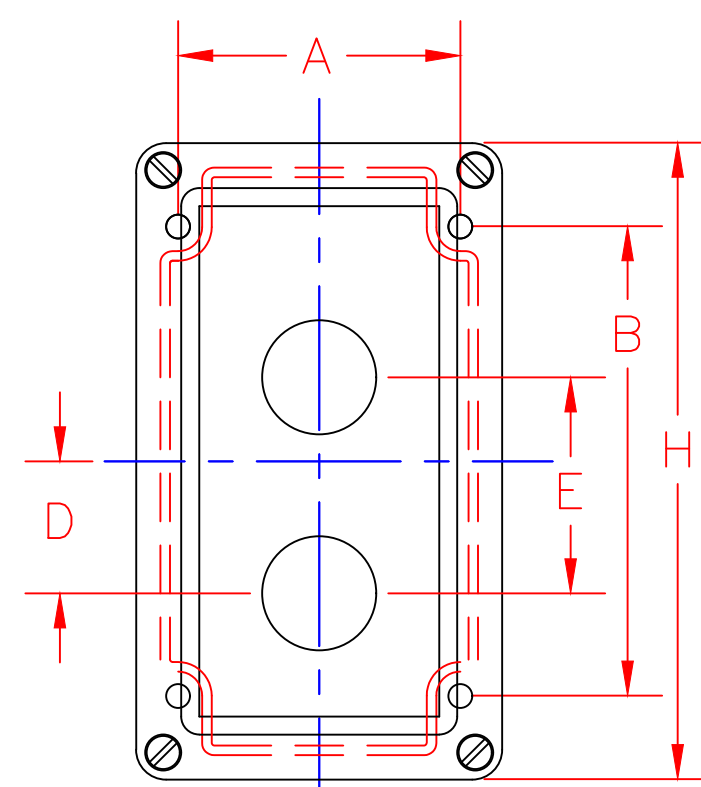


NOTE:

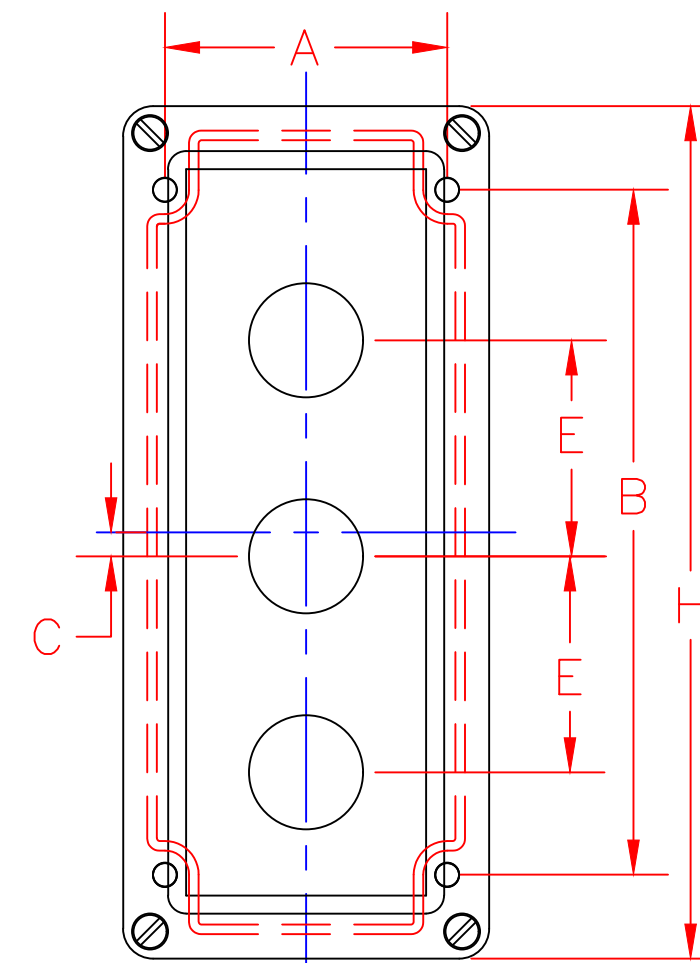
- 1) SPACING DESIGNED TO ACCOMPANY STANDARD AND NARROW LEGEND PLATES – CONSULT WITH CONTROL CONCEPTS FOR TALL AND SPECIAL LEGEND PLATE OPTIONS
- 2) WHEN USING MECHANICAL INTERLOCKS – CENTER LINE DISTANCE ARE 2 INCHES
- 3) ALL OPERATOR HOLES ARE 1- $\frac{3}{16}$ DIA
- 4) SEE HUB CHART FOR HUB OPTIONS AND DRILLED HOLE SIZES. ALL HUBS ARE CENTERED ON BOTTOM FACE UNLESS OTHER WISE SPECIFIED.
- 5) CONTACT CONTROL CONCEPTS FOR CUSTOM ENCLOSURES



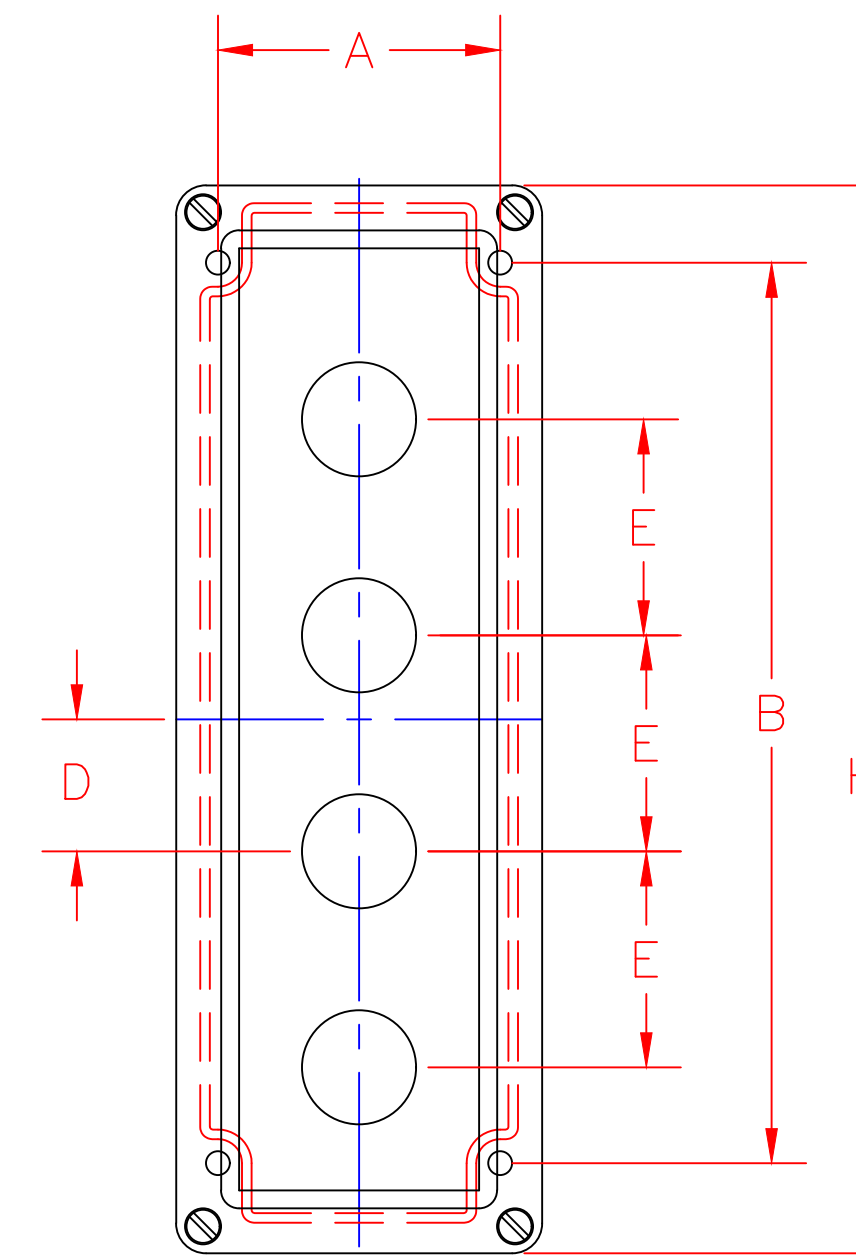
1 UNIT ENCLOSURE
CS1 (CF644)



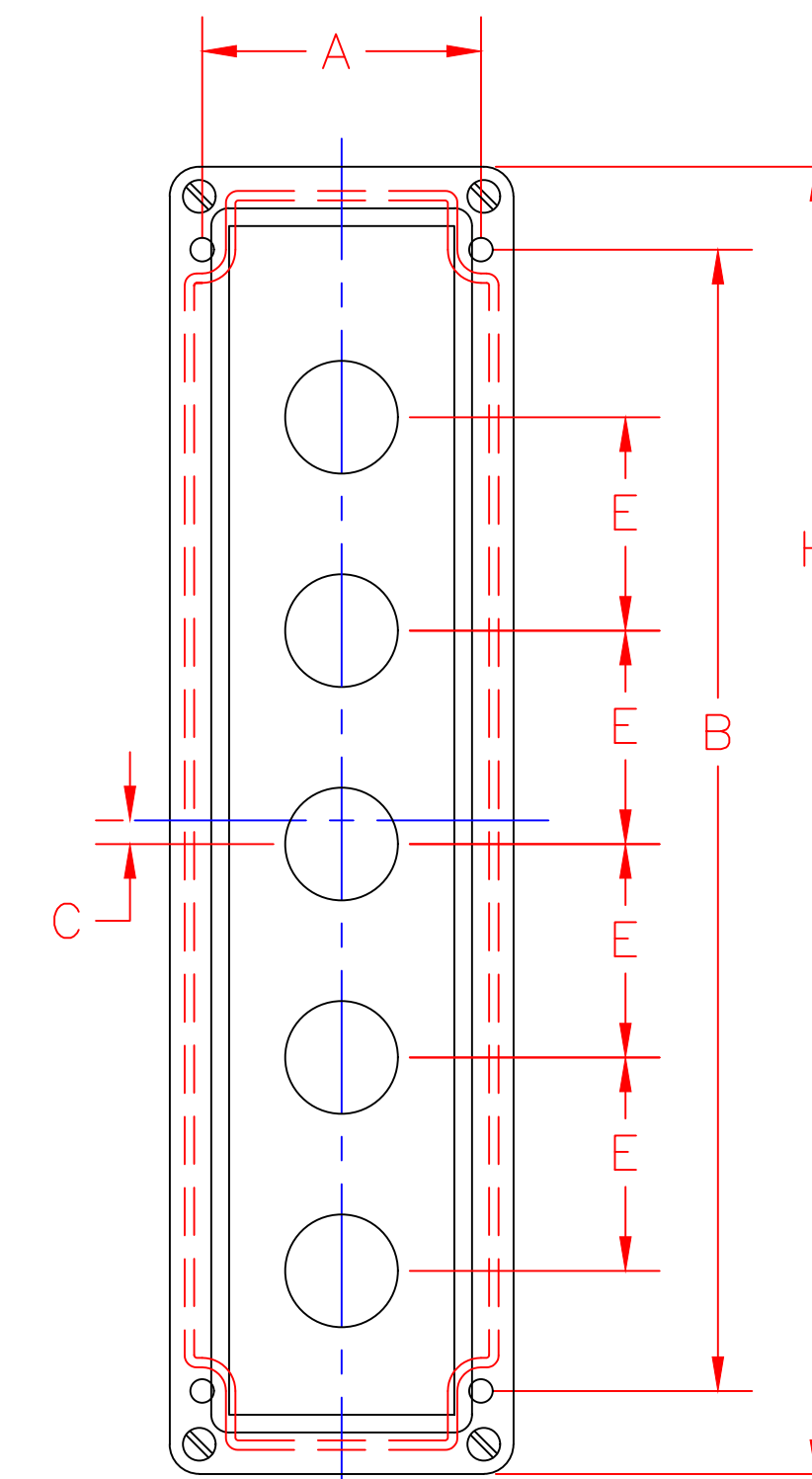
2 UNIT ENCLOSURE
CS2 (CF644)



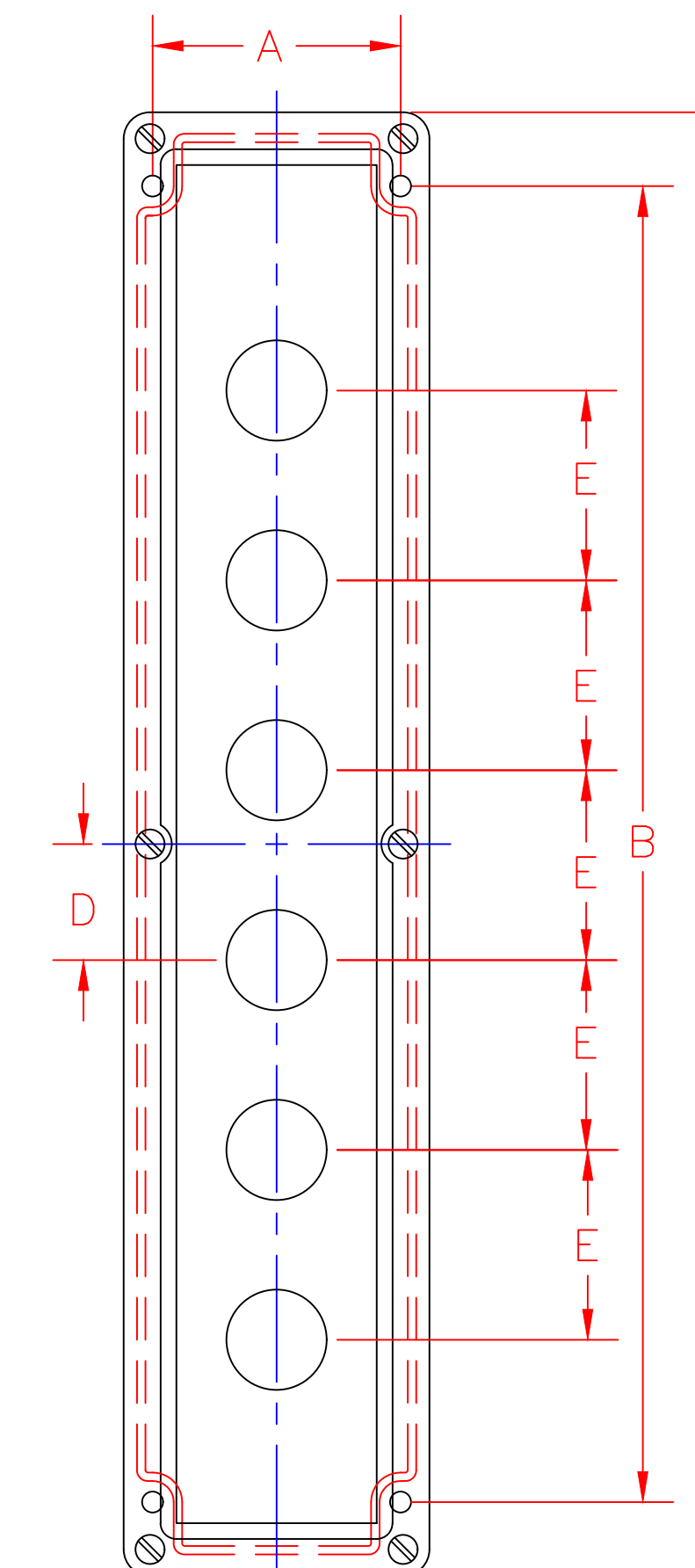
3 UNIT ENCLOSURE
CS3 (CF844)



4 UNIT ENCLOSURE
CS4 (CF1144)



5 UNIT ENCLOSURE
CS5 (CF1432)



6 UNIT ENCLOSURE
CS6 (CF1732)

	Description	(H)	(A)	(B)	(C)	(D)	(E)
CS-6L	6 UNIT ENCLOSURE	17.35	2.73	15.60	---	1.375	2.250
CS-5	5 UNIT ENCLOSURE	13.78	2.73	12.37	0.250	---	2.250
CS-4	4 UNIT ENCLOSURE	11.12	2.94	9.38	---	1.375	2.250
CS-3	3 UNIT ENCLOSURE	6.63	2.94	7.13	0.250	---	2.250
CS-2	2 UNIT ENCLOSURE	6.63	2.94	4.88	---	1.375	2.250
CS-1	1 UNIT ENCLOSURE	6.63	2.94	4.88	0.250	---	---

30MM ENCLOSURE SIZES & HOLE LOCATIONS

HUB TYPE	CONDUIT SIZE	DRILL HOLE SIZE
PVC (W/THRD) R75	$\frac{3}{4}$ "	1- $\frac{1}{16}$ "
PVC (NO THRD) P10	1"	1- $\frac{5}{16}$ "
PVC (NO THRD) P75	$\frac{3}{4}$ "	1- $\frac{1}{16}$ "
PVC (NO THRD) P50	$\frac{1}{2}$ "	$\frac{7}{8}$ "
ALUMINUM A10	1"	1- $\frac{5}{16}$ "
ALUMINUM A75	$\frac{3}{4}$ "	1- $\frac{1}{16}$ "
ALUMINUM A50	$\frac{1}{2}$ "	$\frac{7}{8}$ "
GALVANIZED G10	1"	1- $\frac{5}{16}$ "
GALVANIZED G75	$\frac{3}{4}$ "	1- $\frac{1}{16}$ "
GALVANIZED G50	$\frac{1}{2}$ "	$\frac{7}{8}$ "

HUB SIZE CHART

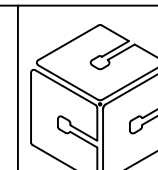
30MM STANDARD STA-
POLYESTER ENCLOSURE

DRAWN BY:
RCG

DATE:
12-10

SCALE:
0.5:1

DRAWING NO
WC1001



CONTROL CONCEPTS CORP.

P.O. BOX 496
664 STATE STREET
BEAVER, PA 15009

