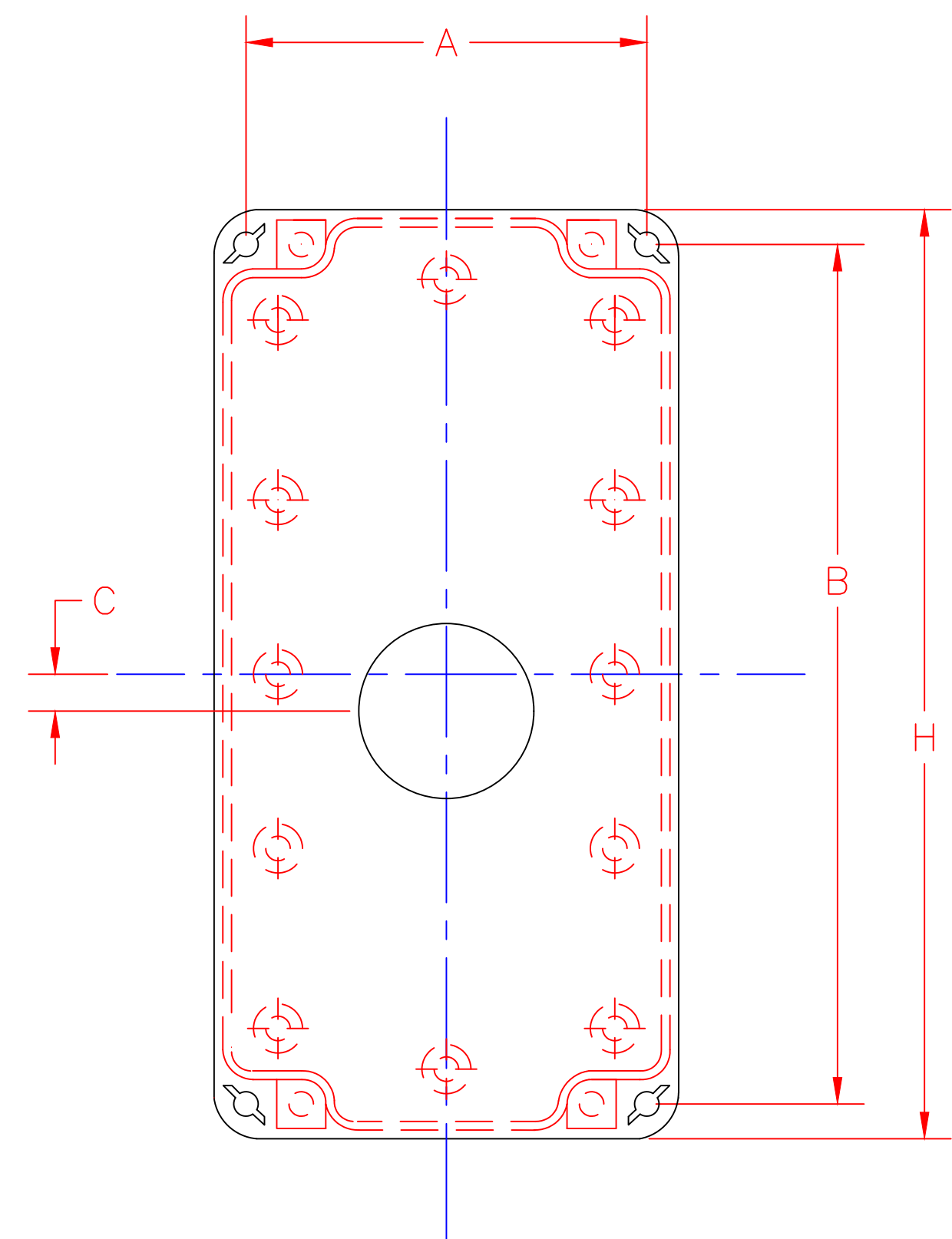
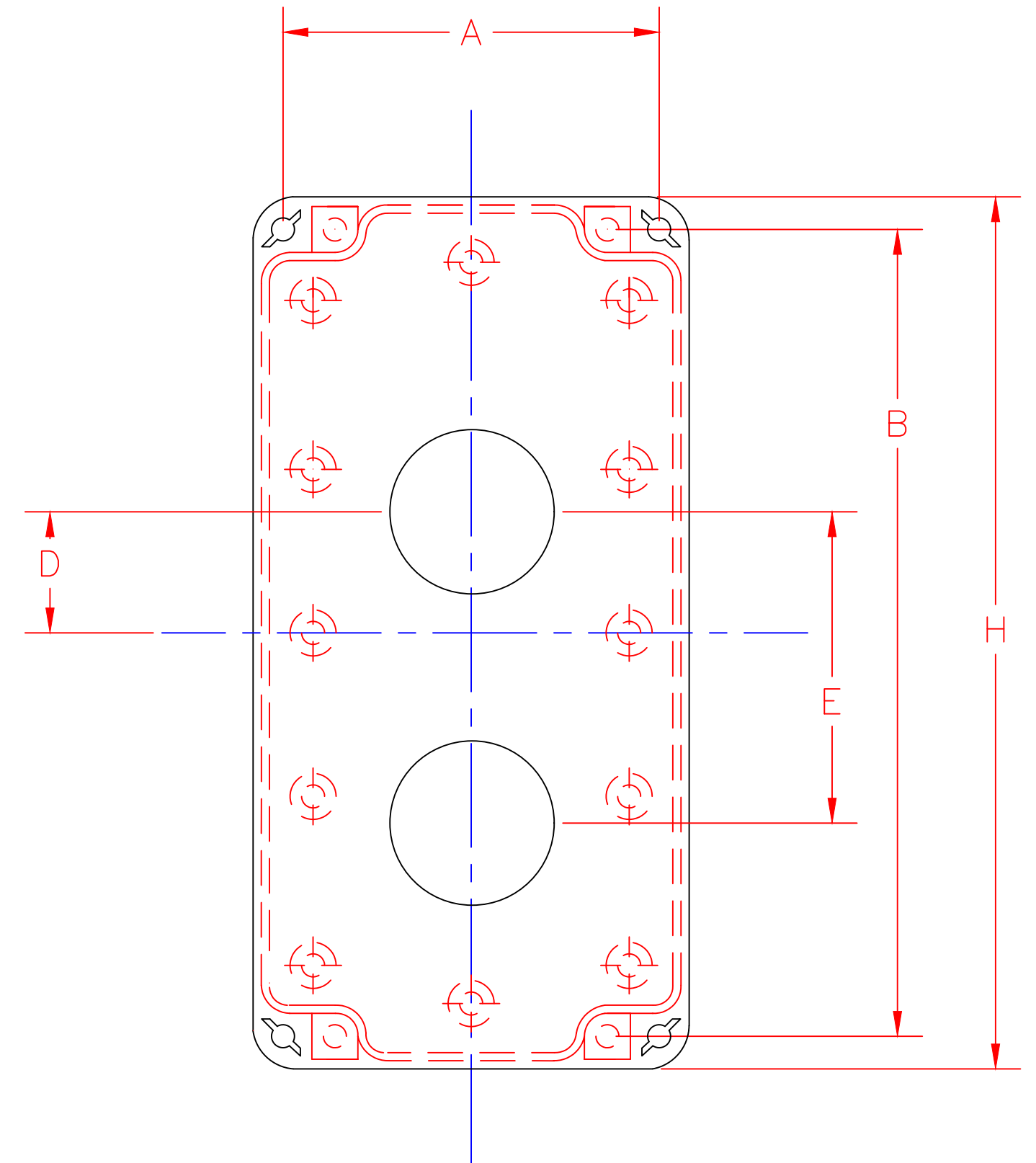


- 1) SPACING DESIGNED TO ACCOMPANY STANDARD AND NARROW LEGEND PLATES – CONSULT WITH CONTROL CONCEPTS FOR TALL AND SPECIAL LEGEND PLATE OPTIONS
- 2) WHEN USING MECHANICAL INTERLOCKS – CENTER LINE DISTANCE ARE 2 INCHES
- 3) ALL OPERATOR HOLES ARE 1-³/₁₆ DIA
- 4) SEE HUB CHART FOR HUB OPTIONS AND DRILLED HOLE SIZES. ALL HUBS ARE CENTERED ON BOTTOM FACE UNLESS OTHER WISE SPECIFIED.
- 5) CONTACT CONTROL CONCEPTS FOR CUSTOM ENCLOSURES

PC-2	2 UNIT ENCLOSURE	6.30	2.72	5.83	---	0.875	2.250
PC-1	1 UNIT ENCLOSURE	6.30	2.72	5.83	0.250	---	---
	Description	(H)	(A)	(B)	(C)	(D)	(E)
30MM ENCLOSURE SIZES & HOLE LOCATIONS							



1 UNIT ENCLOSURE
PC1 (ZP-08)



2 UNIT ENCLOSURE
PC2 (ZP-08)

PVC (W/THRD) R75	3/4"	1- ¹ / ₁₆ "
PVC (NO THRD) P10	1"	1- ⁵ / ₁₆ "
PVC (NO THRD) P75	3/4"	1- ¹ / ₁₆ "
PVC (NO THRD) P50	1/2"	7/8"
ALUMINUM A10	1"	1- ⁵ / ₁₆ "
ALUMINUM A75	3/4"	1- ¹ / ₁₆ "
ALUMINUM A50	1/2"	7/8"
GALVANIZED G10	1"	1- ⁵ / ₁₆ "
GALVANIZED G75	3/4"	1- ¹ / ₁₆ "
GALVANIZED G50	1/2"	7/8"
HUB TYPE	CONDUIT SIZE	DRILL HOLE SIZE
HUB SIZE CHART		

30MM STANDARD STATION
POLYCARBONATE
ENCLOSURES

DRAWN BY:
RCG

DATE:
12-11-01

SCALE:
0.5:1

DRAWING NO.
WC100102

 CONTROL CONCEPTS CORP.

P.O. BOX 496
664 STATE STREET
BEAVER, PA 15009

