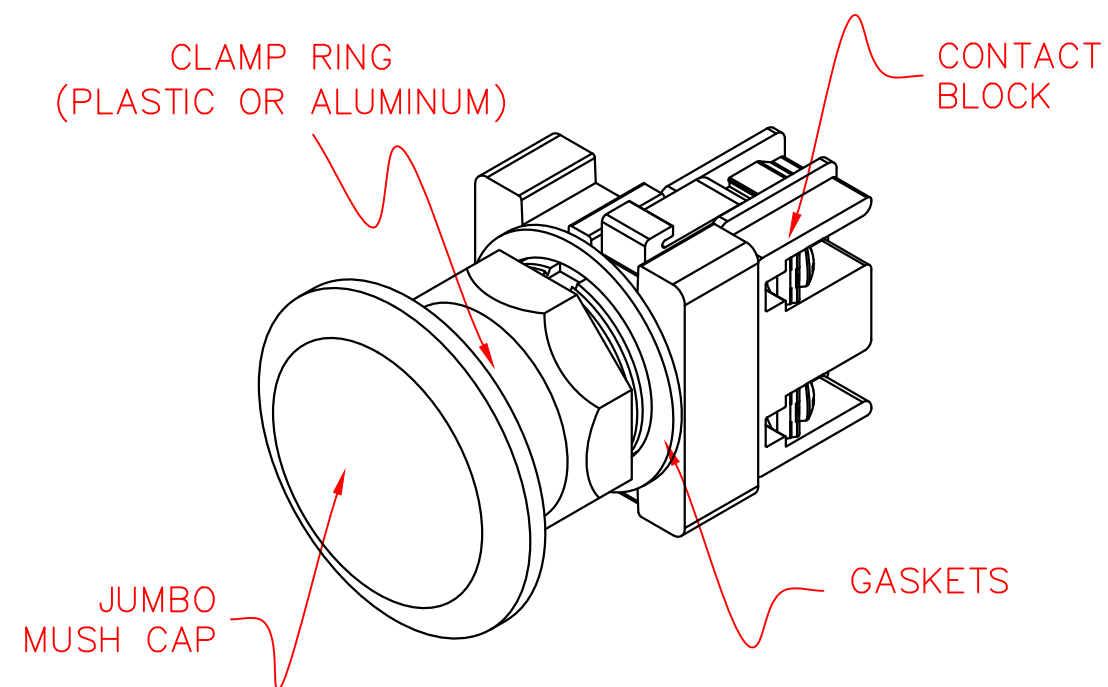


3/16" 2  
1/4" 1  
\*REMOVE ONE ADD'L GASKET  
WHEN USING A LEGEND PLATE



NOTES:

- 1) MOUNTING HOLE IN PANEL –  $\phi 1-3/16$  (30MM)
- 2) CHOICE OF ALUMINUM OR PLASTIC CLAMP RING (NEMA 4 OR NEMA 4X).
- 3) MOUNTING HOLE SPACING (FOR STANDARD LEGEND PLATES) – HORIZONTAL & VERTICAL DISTANCE – 2.250 CENTER TO CENTER

XXX	XXXXXXXXXXXX	XXXX	XXX	30MM PRODUCT LINE PP MAINTAINED JUMBO MUSH CAP OPERATOR W/ CONTACT BLOCK ASSEMBLY DRAWING	
XXX	XXXXXXXXXXXX	XXXX	XXX		
XXX	XXXXXXXXXXXX	XXXX	XXX		
XXX	XXXXXXXXXXXX	XXXX	XXX		
XXX	XXXXXXXXXXXX	XXXX	XXX		
XXX	XXXXXXXXXXXX	XXXX	XXX		
REV	DESCRIPTION	DATE	BY	DRAWN BY: RCG	DATE: 08-09-01



CONTROL CONCEPTS CORP.

P.O. BOX 496  
664 STATE STREET  
BEAVER, PA 15009



SCALE:  
1:1

DRAWING NO.  
WC100015