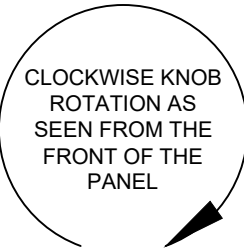
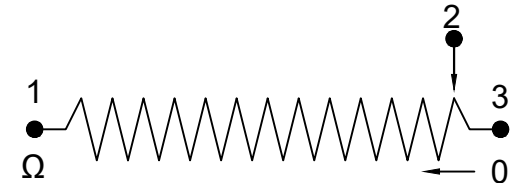
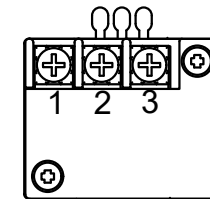
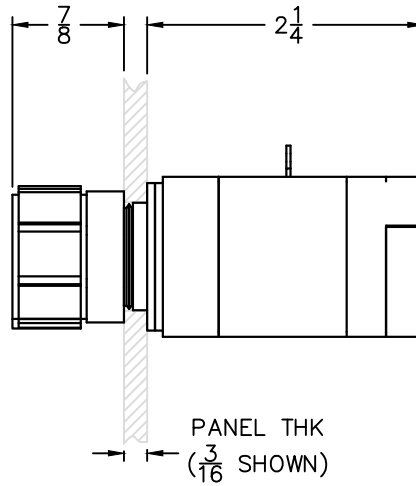
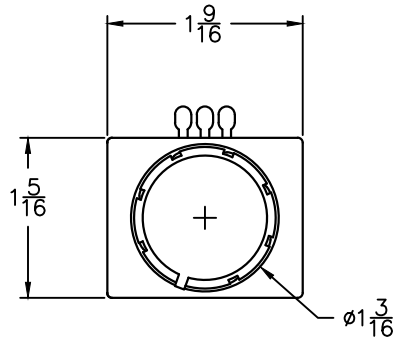


NOTES:

- 1) MOUNTING HOLE IN PANEL – $\phi 7/8$ (22MM)
- 2) MOUNTING HOLE SPACING (FOR STANDARD LEGEND PLATES) – HORIZONTAL & VERTICAL DISTANCE – 1.750 CENTER TO CENTER



2 IS THE COMMON
 1 → 2 IS DECREASING RESISTANCE (↓ Ω)
 3 → 2 IS INCREASING RESISTANCE (↑ Ω)

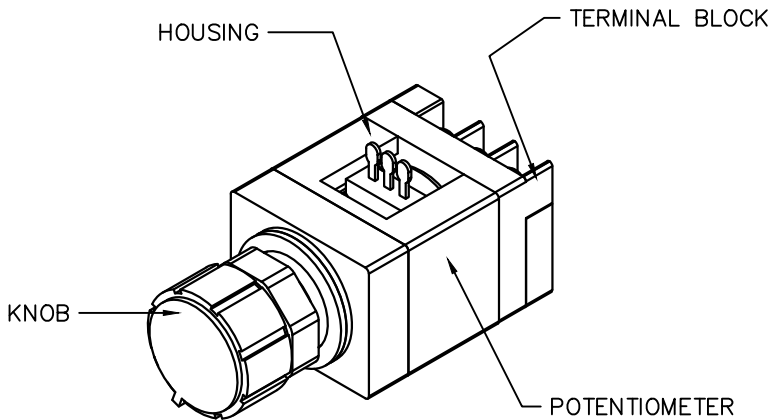


TABLE 1– MOUNTING GASKETS

PANEL THICKNESS	GASKETS*
1/16"	4
1/8"	3
3/16"	2
1/4"	1

* REMOVE ONE ADDITIONAL GASKET WHEN USING A LEGEND PLATE

XXX	XXXXXXXXXXXX	XXXX	XXX
XXX	XXXXXXXXXXXX	XXXX	XXX
XXX	XXXXXXXXXXXX	XXXX	XXX
XXX	XXXXXXXXXXXX	XXXX	XXX
XXX	XXXXXXXXXXXX	XXXX	XXX
REV	DESCRIPTION	DATE	BY

TOLERANCE
 .XX +/- 0.02
 .XXX +/- 0.005
 .XXXX +/- 0.001
 ANGLES +/- 0.5 DEG
 UNLESS OTHERWISE SPECIFIED

c3controls
 since 1976
 P.O. BOX 496 BEAVER, PA 15009 www.c3controls.com

Description
 22MM PRODUCT LINE POTENTIOMETER w/ TERMINAL BLOCK DATA SHEET

Drawn By: RCG
Date: 05-21-2003 **Scale:** 1:1 **Drawing Number:** WC100196

This drawing is the property of c3controls. The drawing may not be copied, used or disclosed, for any purpose except as authorized in writing by c3controls.