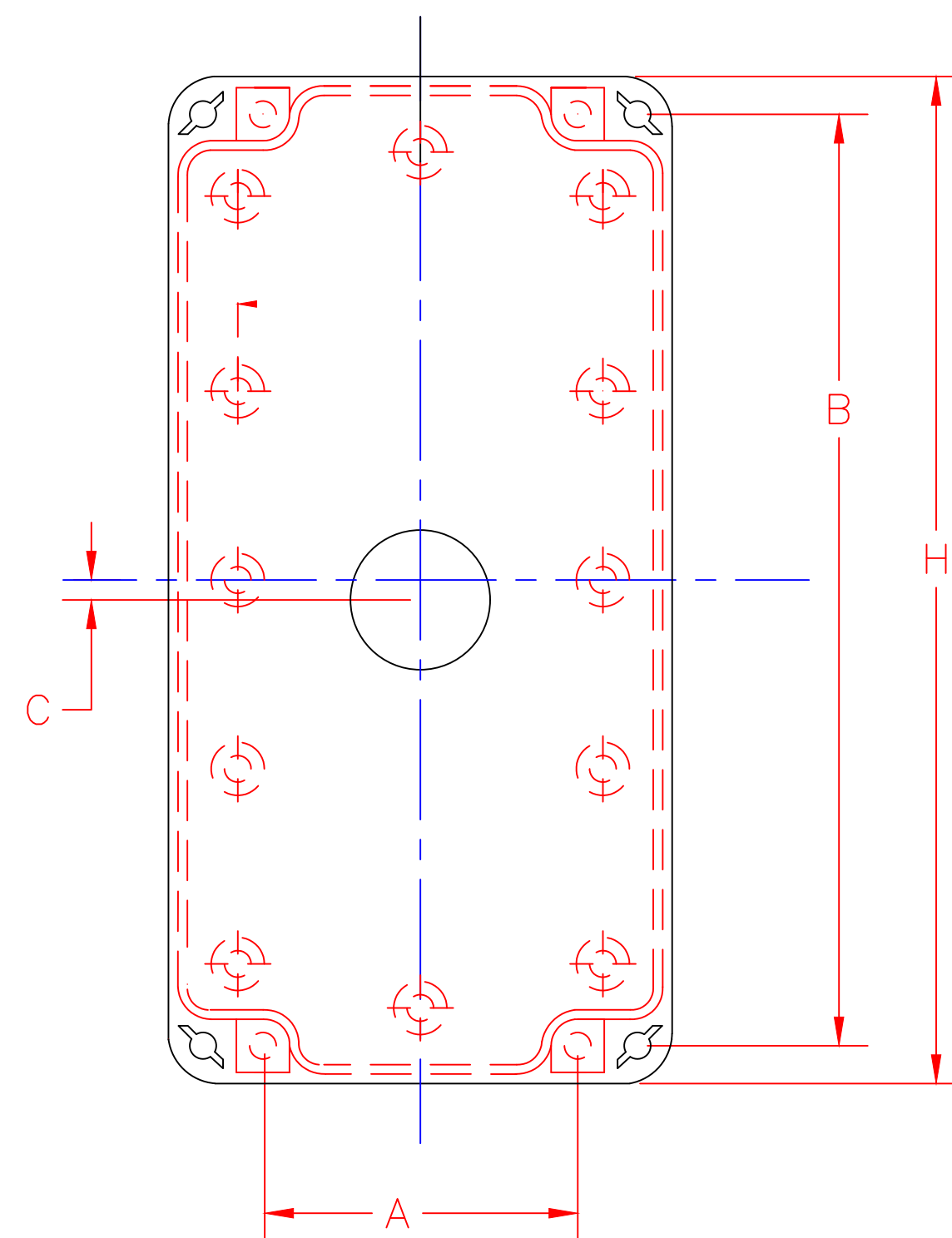


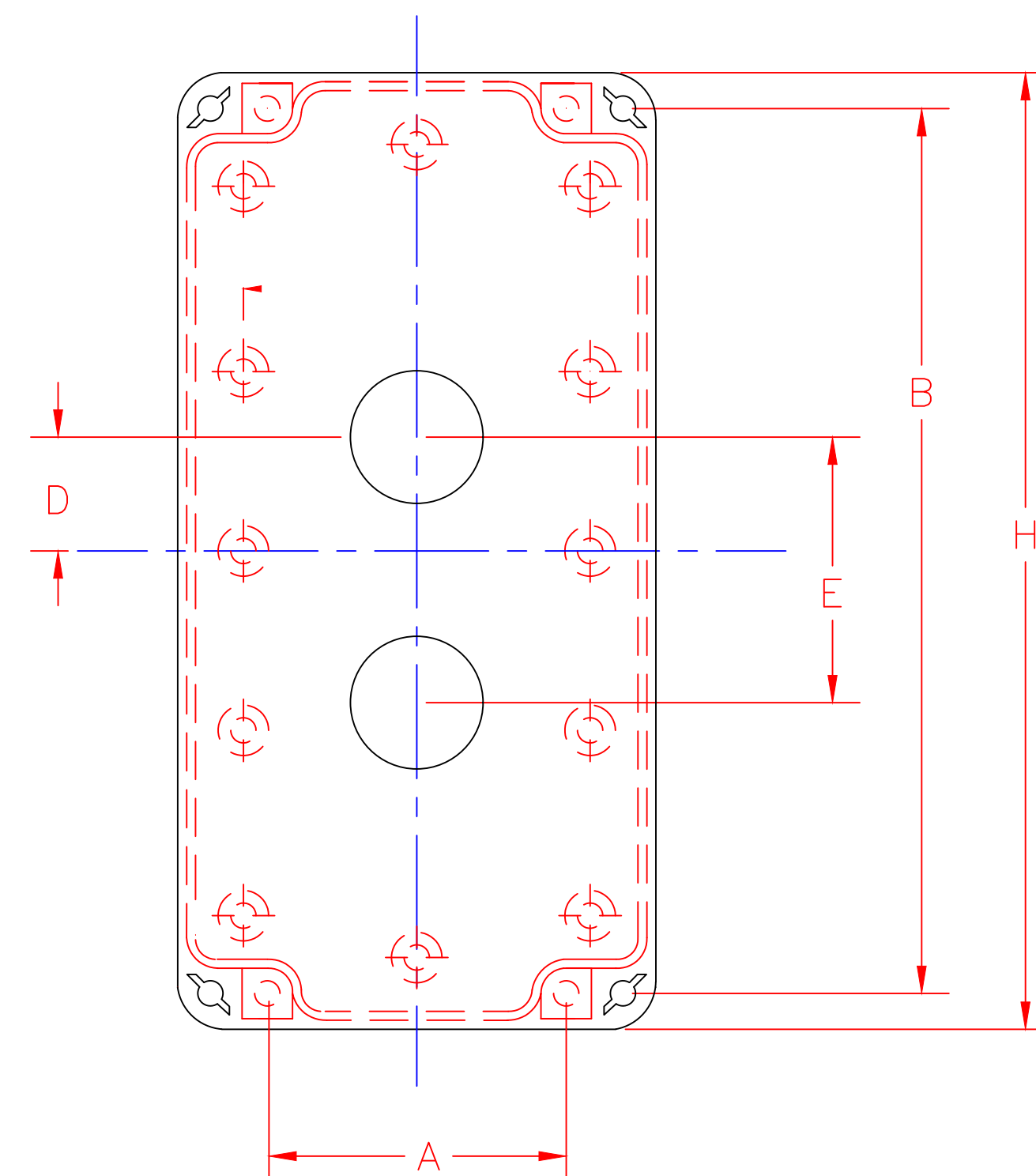
NOTE:

- 1) SPACING DESIGNED TO ACCOMPANY STANDARD AND SHORT LEGEND PLATES – CONSULT WITH CONTROL CONCEPTS FOR TALL, JUMBO AND SPECIAL LEGEND PLATE OPTIONS
- 2) WHEN USING MECHANICAL INTERLOCKS – CENTER LINE DISTANCE ARE 2 INCHES
- 3) ALL OPERATOR HOLES ARE 7/8 DIA
- 4) SEE HUB CHART FOR HUB OPTIONS AND DRILLED HOLE SIZES. ALL HUBS ARE CENTERED ON BOTTOM FACE UNLESS OTHERWISE SPECIFIED.
- 5) CONTACT CONTROL CONCEPTS FOR CUSTOM ENCLOSURES

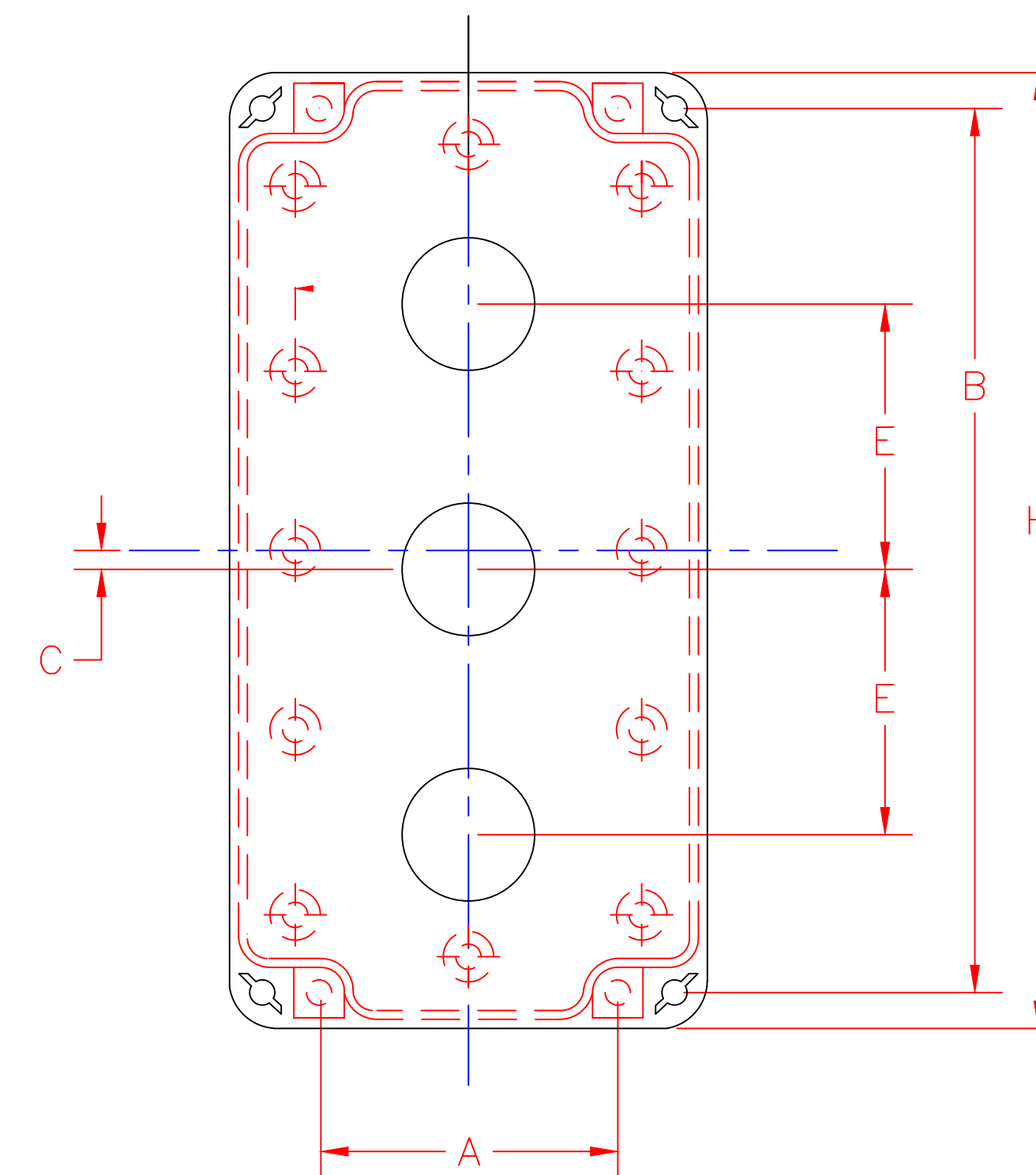
| | | |
|-------------------|--------------|-----------------|
| PVC (W/THRD) R75 | 3/4" | 1-1/16" |
| PVC (NO THRD) P10 | 1" | 1-5/16" |
| PVC (NO THRD) P75 | 3/4" | 1-1/16" |
| PVC (NO THRD) P50 | 1/2" | 7/8" |
| ALUMINUM A10 | 1" | 1-5/16" |
| ALUMINUM A75 | 3/4" | 1-1/16" |
| ALUMINUM A50 | 1/2" | 7/8" |
| GALVANIZED G10 | 1" | 1-5/16" |
| GALVANIZED G75 | 3/4" | 1-1/16" |
| GALVANIZED G50 | 1/2" | 7/8" |
| HUB TYPE | CONDUIT SIZE | DRILL HOLE SIZE |
| HUB SIZE CHART | | |



1 UNIT ENCLOSURE
22PC1 (ZP-08)



2 UNIT ENCLOSURE
22PC2 (ZP-08)



3 UNIT ENCLOSURE
22PC3 (ZP-08)

| | | | | | | | |
|---------------------------------------|------------------|------|------|------|-------|-------|-------|
| 22PC-3 | 3 UNIT ENCLOSURE | 6.30 | 1.97 | 5.83 | 0.125 | --- | 1.750 |
| 22PC-2 | 2 UNIT ENCLOSURE | 6.30 | 1.97 | 5.83 | --- | 0.750 | 1.750 |
| 22PC-1 | 1 UNIT ENCLOSURE | 6.30 | 1.97 | 5.83 | 0.125 | --- | --- |
| | Description | (H) | (A) | (B) | (C) | (D) | (E) |
| 22MM ENCLOSURE SIZES & HOLE LOCATIONS | | | | | | | |

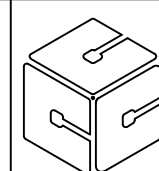
22MM STANDARD STATION
POLYCARBONATE
ENCLOSURES

DRAWN BY:
RCG

DATE:
12-12-01

SCALE:
1:1

DRAWING NO.
WC100105



CONTROL CONCEPTS CORP.

P.O. BOX 496
664 STATE STREET
BEAVER, PA 15009

