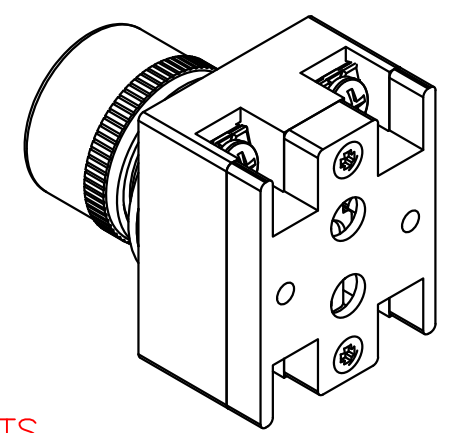
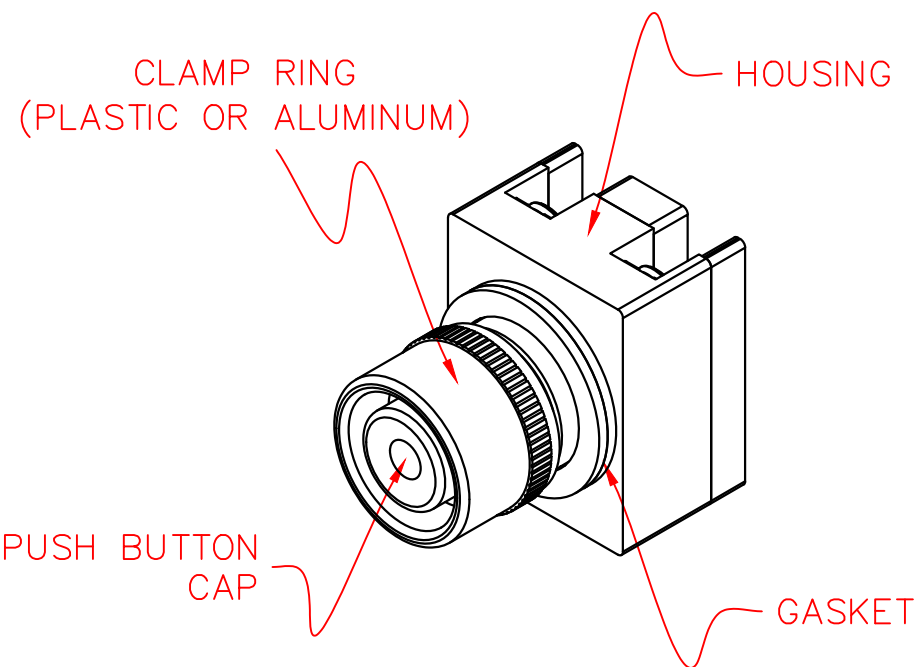
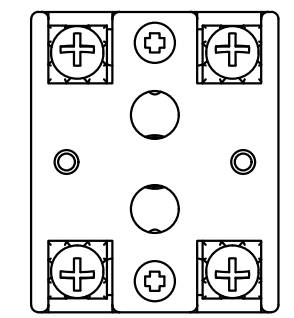
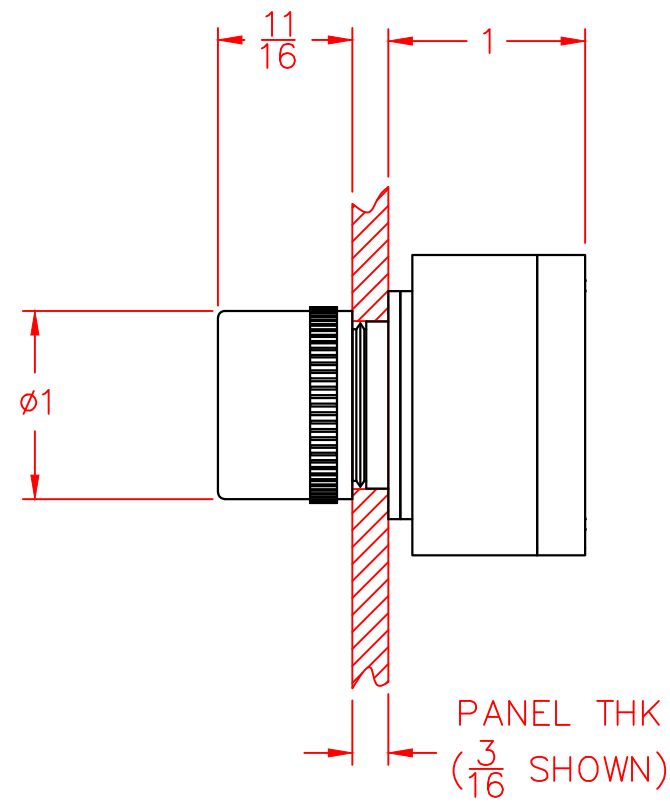
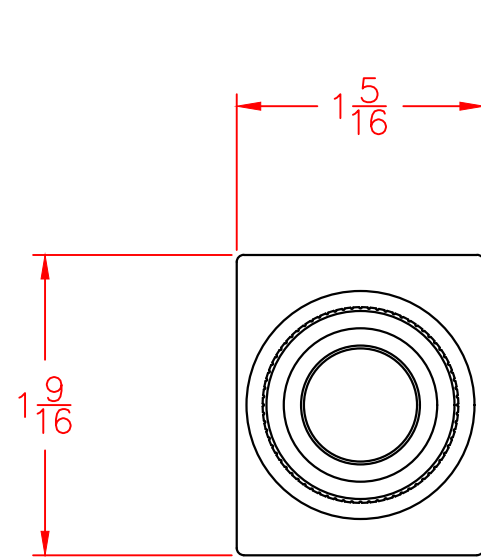


1/4" 1
 * REMOVE ONE ADDITIONAL GASKET WHEN USING A LEGEND PLATE



NOTES:

- 1) MOUNTING HOLE IN PANEL - $\phi 7/8$ (22MM)
- 2) MOUNTING HOLE SPACING (FOR STANDARD LEGEND PLATES) - HORIZONTAL & VERTICAL DISTANCE - 1.750 CENTER TO CENTER
- 3) CHOICE OF ALUMINUM OR PLASTIC CLAMP RING (NEMA 4 OR NEMA 4X). CLAMP RINGS FIT CONTROL CONCEPTS 22MM PRODUCT LINE

XXX	XXXXXXXXXX	XXXX	XXX	22MM PRODUCT LINE FLUSH CAP PUSH BUTTON OPERATOR ASSEMBLY DRAWING	
XXX	XXXXXXXXXX	XXXX	XXX		
XXX	XXXXXXXXXX	XXXX	XXX		
XXX	XXXXXXXXXX	XXXX	XXX		
XXX	XXXXXXXXXX	XXXX	XXX		
XXX	XXXXXXXXXX	XXXX	XXX		
REV	DESCRIPTION	DATE	BY	DRAWN BY: RCG	DATE: 03-20-01