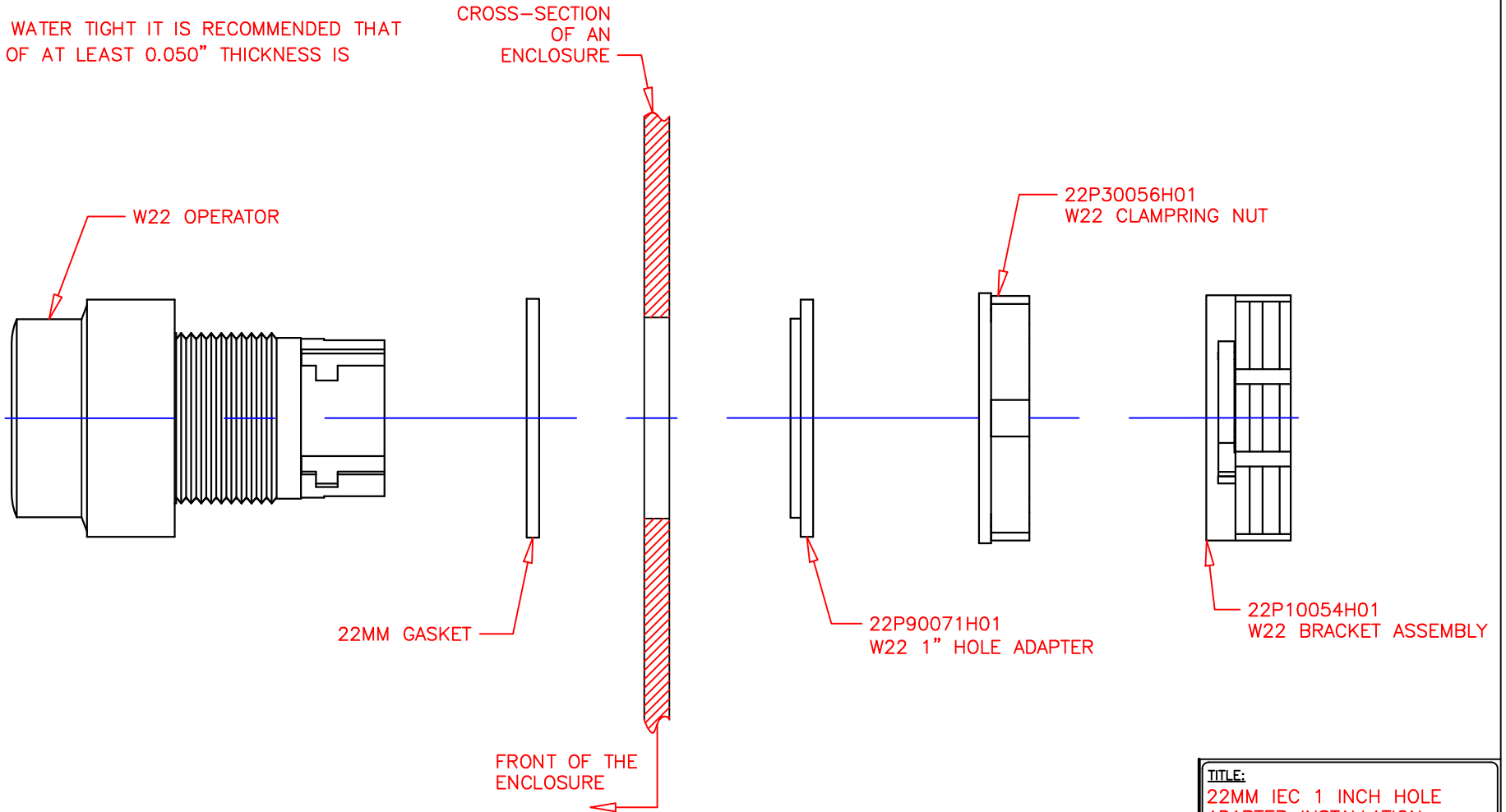


**NOTE:**

- 1) THE W22 1 INCH HOLE ADAPTER CAN BE USED WITH ANY W22 OPERATOR (W22 PUSHBUTTON SHOWN)
- 2) TO ENSURE WATER TIGHT IT IS RECOMMENDED THAT AN ENCLOSURE OF AT LEAST 0.050" THICKNESS IS USED



<b>TITLE:</b> 22MM IEC 1 INCH HOLE ADAPTER INSTALLATION DRAWING	
<b>DRAWN BY:</b> PAD	<b>DATE:</b> 02-11-04
<b>SCALE:</b> 2.0:1.0	<b>DRAWING NO.:</b> 22P90073