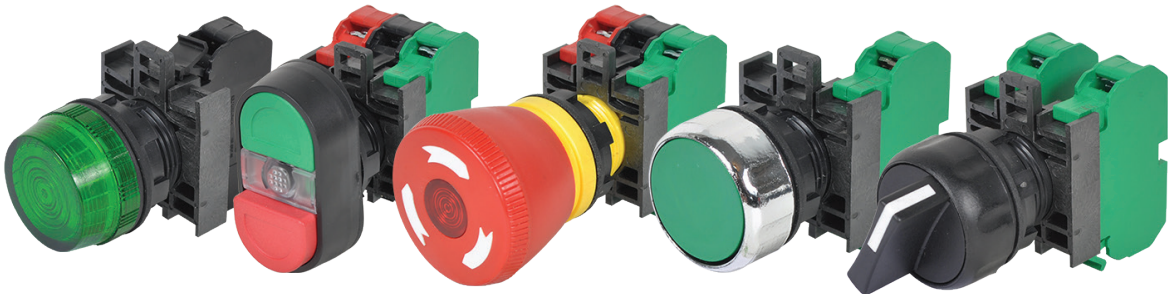


# The World's Best 22mm IEC Pilot Devices



## Solutions

### A Solution So Innovative, We Can Hardly Control Our Excitement.

Beyond fit, form, features, and functionality — turning savvy designs into better products.



#### Quick and Simple

The latching mechanism enables the user to wire the contact blocks and light modules separate from the operator and outside the confined space of the control panel.



#### Sleek Design

Manufactured to be the highest quality—inside and out. With its sleek design, you know you are getting the quality you deserve.



#### Low Profile

Assumes the lead in the industry with the shortest depth behind the panel.



#### Easy to Install

Our snap-on contact blocks are color coded for quick circuit identification and feature 35° angled captive terminal screws and self-lifting pressure plates for fast and easy installation. Contact blocks can be stacked 2 deep and up to 3 across for a total of 6 circuits.



#### One Cam Design

Our single cam design eliminates the need for multiple cam and selector switch configurations, reducing inventory and saving you labor time and costs.



#### Multiple Voltages

Multi-voltage light modules can be used with 22mm IEC modular pilot lights, illuminated push buttons, push-to-test lights, and illuminated selector switches.



#### Rugged Design

Manufactured with industrial grade plastics for strength and less weight, and we use metal where it matters. The tough polyester construction of our 22mm IEC pilot devices provides electrical insulation, resists corrosion, and rejects moisture.



#### Modular Design

The modular design of c3controls' products reduces inventory and opens up multiple possibilities when configuring an operator interface.

## Range

### The Perfect Range of Devices

At c3controls we do more than push buttons — we challenge conventional thinking. Consider our line of 22mm IEC pilot devices featuring the perfect range of configurations for the OEM. Each product designed to perfectly complement the others in the line — and your application.



#### PUSH BUTTON

- Available in maintained and momentary, in both illuminated and non-illuminated
- Multi voltage and full voltage light units in a wide range of voltages
- Contact blocks can be stacked for up to 6 circuits, providing the flexibility to operate multiple circuits from a single operator



#### EMERGENCY STOP

- Meets EN418 Standards for "Safety of Machinery"
- Available in illuminated and non-illuminated
- Multi voltage and full voltage light units in a wide range of voltages
- Contact blocks can be stacked for up to 6 circuits, providing the flexibility to operate multiple circuits from a single operator



#### PILOT LIGHT

- Available in unibody, modular, multi-voltage and push-to-test
- Non-relampable and relampable versions
- Wide variety of lamp types and colors
- Wide range of voltages up to 277V AC/DC



#### SELECTOR SWITCH

- Illuminated, non-illuminated and keyed
- 2- & 3-Position in both maintained and spring return
- Multi voltage and full voltage light units in a wide range of voltages
- Contact blocks can be stacked for up to 4 circuits, providing the flexibility to operate multiple circuits from a single operator

# Dependable Performance for Years and Years.

Pilot devices designed to provide exceptional performance and long electrical life through a wide range of switching capabilities. Each delivering easy installation, distinct functionality, and ensuring optimal performance and safety in the most demanding applications.



### Proven

UL Listed and CE marked, our 22mm IEC operators are suitable for use anywhere in the world. The product certifications and electrical ratings are clearly marked on the outside of the contact blocks for easy reference during installation.

## Guaranteed Same-Day Shipping



### EN418 Emergency Stop

c3controls' maintained push-twist-release operators meet the global compliance standards for EN418 – Safety of Machinery. They feature a unique trigger action and are available in both non-illuminated and illuminated versions.



### Multi-Voltage Modules

Our non-relampable multi-voltage light modules were designed to operate from 20V to 277V AC or DC without losing light intensity and can be used with any 22mm IEC illuminated operator — significantly reducing inventory costs and simplifying installation.



### Labor and Cost Savings

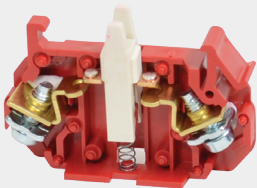
Available in non-illuminated and illuminated versions and in a variety of color options, our dual-push button operators do the work of two operators in one 22.5mm hole, saving you time, labor and space.



### Metal on the Inside

We've designed our 22mm IEC emergency stop to perform reliably in the most demanding applications. Our devices feature a solid brass detent mechanism ensuring that when you hit the stop button in an emergency, it works.

## Backed with a Limited Lifetime Warranty



### Low Level Switching

Built-in self-wiping cleaning action and high point contact pressure for low-level switching. Silver contacts provide long life in normal control circuits. Gold plated contacts available for dry circuit applications.



### Energy Savings

Utilizing internal electrical design engineering and our printed circuit board manufacturing technology, our unibody pilot lights use low energy consumption LED lamps that provide leakage protection, great light output and increased visibility from side views.



### Special Operators

We offer a wide range of accessories and special operators for the 22mm IEC pilot device line.



### Compact Control Stations

Factory assembled 22mm IEC compact control stations provide the convenience of a single catalog number, no assembly required, shorter control panel bill of materials, and easier inventory management.

## GET THE MOST OUT OF OUR COMPLETE LINE OF 22MM IEC PILOT DEVICES.

Download resources, request a catalog, and configure products!

### SHOP NOW:

[www.c3controls.com/22mm-iec](http://www.c3controls.com/22mm-iec)

