

WORLD TOWER LIGHTS



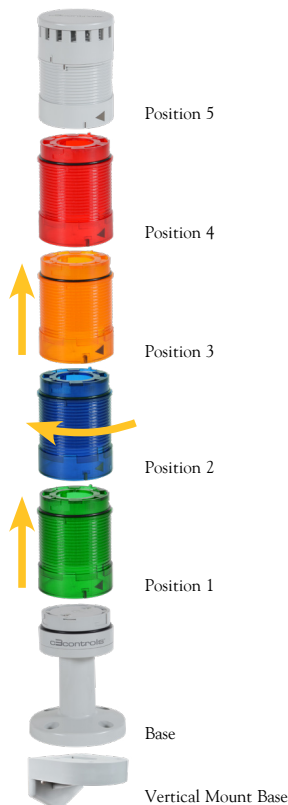
SERIES WTL PRODUCT PROFILE

The c3controls **Series WTL World Tower Lights** offer reliability for all your signaling needs. The space saving design is stackable to allow up to five (5) modules in a single assembly. Easy to assemble and disassemble with low power consumption integrated LEDs—no complicated center posts. c3controls Series WTL World Tower Lights will help you reduce your total installed costs and enhance the features and performance of your equipment.



FEATURES AND BENEFITS

- Tower light assemblies provide the convenience of a single catalog number.
- Heavy-duty polycarbonate construction for excellent durability, impact resistance, superior corrosion resistance, moisture rejection and electrical insulation.
- Available in 24V AC/DC, 120V AC, and 240V AC.
- Lenses are available in five colors as well as the option of clear lenses and integrated color LEDs for a clean, modern look. Three styles of module illumination are available: continuous, flashing and rotary.
- Polycarbonate mounting bases are available in three versions: 50mm direct mount eliminates the need for drilling and reduces installation and our 50mm short and 50mm tall bases secure to the panel utilizing a 4-hole mounting pattern.



ADVANTAGES

Easy Maintenance and Assembly

- No tools required—simply line up the module marking and arrow and turn; 25° clockwise to tighten and 25° counter clockwise to loosen.
- Wiring is made simple with our integrated heavy-duty polycarbonate bases. No complicated center post required for construction—just wire to the terminals.

Modular Space Saving Design

- Stackable design to allow up to five (5) modules in a single assembly.

Consistent Visibility

- c3controls selects the highest quality raw materials to ensure our products outlast the competition, including Lexan™ plastic for our lenses—improving visibility and resistance to high impact for reliable performance, even in high ambient temperatures.

Environmentally Secure

- Rated Type 1, 2, 3, 3R, 4/4X, 12, 13 and IP65 for watertight and corrosion resistance.

Energy Savings

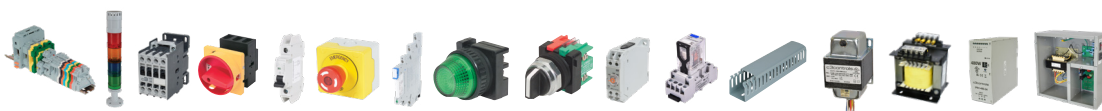
- Our low power consumption sound modules are available in continuous or intermittent with 80dB or 100dB output, and our LED lamps last 100,000 hours—that's 11.4 years!

Cost Savings

- Typically 25-30% less when compared to other assemblies.
- Shipped pre-assembled—reduce time spent on the floor and improving profitability.

APPLICATIONS

- c3controls Series WTL World Tower Lights provide visual and audible status of a machine, process or system. Their features, performance and ease of installation make them ideal for baggage handlers, conveyors, and assembly lines.



c3controls®

Copyright © 2025 c3controls. All Rights Reserved.

724.775.7926 | www.c3controls.com

REVISION 06. 2025



WORLD TOWER LIGHTS

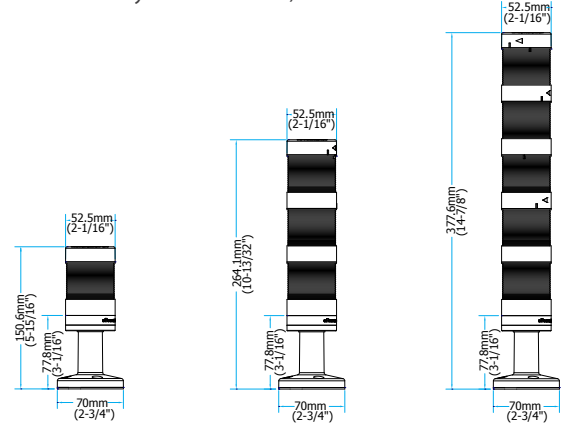
SPECIFICATIONS

		Light Module	Sound Module
	UNITS		
ELECTRICAL GENERAL			
Rated Operating Voltage		24V AC/DC 120V AC, 240V AC	24V AC/DC 120V 60Hz/110V 50Hz 240V 60Hz/220V 50Hz
Color		Amber Blue Green Red White	Grey
Lumens	mcd	150 ~ 1500	N/A
Sound Output	dB	N/A	80 ~ 100
Flashing Rate	FPM	≈ 43 flashes/min	N/A
Design Life	Hrs.	100k	100k
Current Draw	mA	5 ~ 80	5 ~ 20
Lamp Type		LED	N/A
Shock & Vibration		Excellent	Excellent
Electrical Leakage Protection	mA	< 5	< 5
Dielectric Strength (Mechanical Contacts)		1500V for 1 Minute	
ENVIRONMENTAL			
Ingress Protection		Type 1, 2, 3, 3R, 4/4X, 12 and 13	
	IP	65 (as per IEC 60529)	
Ambient Operating Temperature	°C/°F	-30 to +60° C (-22 to +140° F)	
Ambient Storage Temperature	°C/°F	-30 to +70° C (-22 to +158° F)	
TERMINAL CONSTRUCTION			
Wire Size			
Copper only, stranded	mm²	0.3255 ~ 1.2	
	AWG	22 ~ 16	
NOTE: Only one wire permitted per termination			
Tightening Torque	Nm	0.5 ~ 0.9	
	Lb-in.	5 ~ 8	
ROHS COMPLIANCE			
For RoHS compliance documentation by product, refer to c3controls.com.			

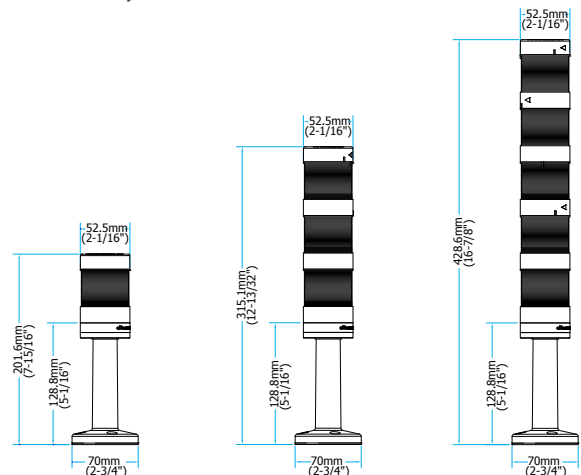
For complete ratings and detailed specifications refer to c3controls.com.

DIMENSIONS

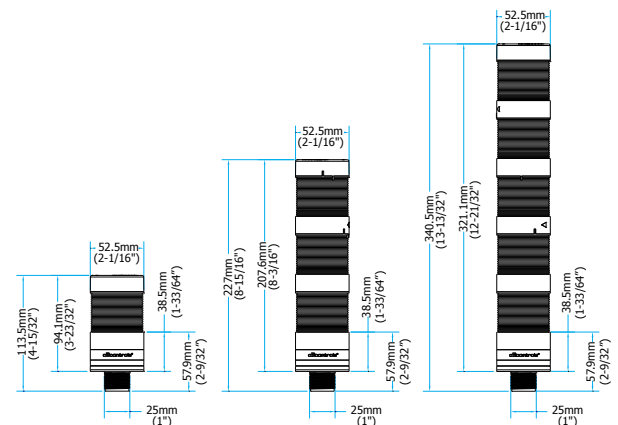
Series WTL-50P1 (50mm Diameter Tower Light Assembly with Short Polycarbonate Base)



Series WTL-50P2 (50mm Diameter Tower Light Assembly with Tall Polycarbonate Base)



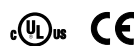
Series WTL-50P3 (50mm Diameter Tower Light Assembly with Direct Mount Base)



CERTIFICATIONS

Conformity to Standards:

UL 508
CSA C22.2 No. 14-13
IEC/EN 60947-1, 60947-5-1



Certifications:

UL File #: E68568

CE Marked (per EU Low Voltage
Directive 2014/35/EC and
RoHS Directive 2011/65/EU)



c3controls

Copyright © 2025 c3controls. All Rights Reserved.

724.775.7926 | www.c3controls.com

REVISION 06. 2025