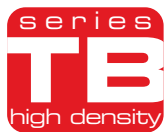


HIGH DENSITY **TERMINAL BLOCKS**



SERIES TB PRODUCT PROFILE

c3controls' line of **High Density Terminal Blocks** are both innovative and user-friendly. They are available in multiple terminal points from 4, 6, and 12 in a single molded housing, are simple to install, and carry an electrical rating of 30A @ 600V AC (UL/CSA) and 30A @ 750V AC (IEC).

ENGINEERED TO HANDLE YOUR MOST COMPLEX WIRING APPLICATIONS.

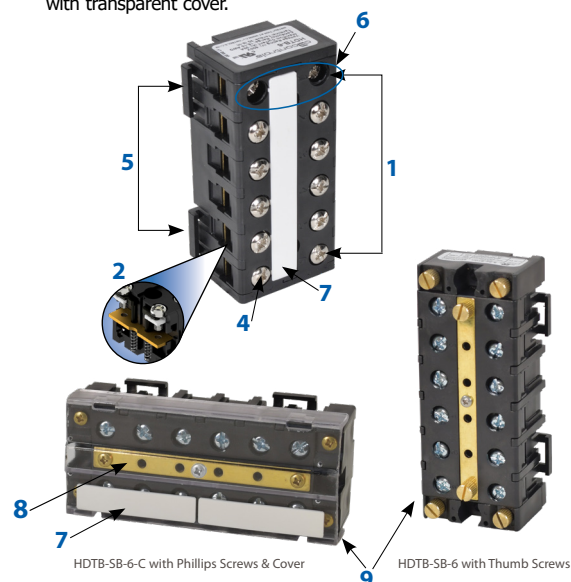
✓ Proven	Our high density terminal blocks and shorting blocks meet UL and CSA standards, and are RoHS compliant.
✓ Multiple Wire Sizes	High density terminal blocks accommodate #18 to #10 AWG wires (0.34 – 4mm ²).
✓ Wide Range of Operation	A wide range of 4, 6, and 12 point circuit terminal blocks in a single molded housing rated for 600V, 30A continuous service.
✓ Convenient	c3controls high density terminal blocks are directly interchangeable with GE CR151 terminal blocks and our shorting blocks are directly interchangeable with GE EB27B06S terminal blocks.
✓ Wiring Made Easy	Wiring to the terminal blocks is made easy by unobstructed access to terminals and with screws in the fully backed-out position.
✓ Heavy-Duty Construction	We mold our terminal block housings from unbreakable thermoplastic and we use quality zinc plated brass and electrolytic copper for our metal parts for excellent conductivity and to minimize corrosion.
✓ Quick Identification	Terminal markers are available and can be hand marked or custom printed.
✓ Easy to Install	Available panel mounting or 35mm DIN rail mounting for easy assembly.
✓ Time Savings	Individual blocks can be quickly and easily added or removed without disturbing adjacent blocks. Only a screwdriver is required for removal.
✓ Limited Lifetime Warranty*	Every product is backed by our limited lifetime warranty—unmatched in the industry—bringing you quality components that perform in the most demanding applications.
✓ Guaranteed Same-Day Shipping*	Product availability reduces inventory, and improves cash-flow—saving you money. With c3controls any order for standard catalog items received by 6:00pm ET is guaranteed to ship same-day.
✓ Advantage Pricing	Our approach to product development, manufacturing, and focus on servicing the OEM and Electrical Equipment Builder reduces cost. The result—the best value in the industry.

*See c3controls Terms & Conditions



UNIQUE PRODUCT LINE FEATURES

1. Multiple terminal points: 4, 6, or 12 in a single molded housing.
2. Out of the box and ready to install! Screws come in the backed out position with convenient spring-return open terminals for easy wiring.
3. Shorting block offers flexible options from 2, 4 and 6 pole in a single molded housing rated for 600V AC, 30A (unprepared wire) and 60A (prepared wire).
4. Rugged, corrosive resistant materials and 8 - 32 terminal screws.
5. Integrated 35mm DIN Rail snap and panel mounting geometry.
6. Integrated IP20 guarded terminals prevent accidental contact.
7. Large marking strip available that can be hand marked or custom printed.
8. Shorting block features a brass shorting strip to easily short terminals. Terminals can be shorted as per customer requirement.
9. Shorting block versions available with Thumb screws or Phillips screws with transparent cover.



HDTB-SB-6-C with Phillips Screws & Cover

HDTB-SB-6 with Thumb Screws



c3controls[®]

Copyright © 2025 c3controls. All Rights Reserved.

724.775.7926 | c3controls.com

REVISION 01.2025



HIGH DENSITY TERMINAL BLOCKS

SPECIFICATIONS

High Density Terminal Blocks				
		HDTB-4	HDTB-6	HDTB-12
		4 Circuit Terminal Block	6 Circuit Terminal Block	12 Circuit Terminal Block
	UNITS			
ELECTRICAL				
Voltage Rating	V	600		
Maximum Current	A	30		
MECHANICAL				
Wire Range	AWG	#18 - #10		
Wire Strip Length	in.	5/16		
Tightening Torque	lb-in.	7-12 (max. 18-20)		
ROHS COMPLIANCE				
For RoHS compliance documentation by product, refer to c3controls.com.				
High Density Shorting Terminal Blocks				
		HDTB-SB-2 & HDTB-SB-2-C	HDTB-SB-4 & HDTB-SB-4-C	HDTB-SB-6 & HDTB-SB-6-C
		2 Circuit Shorting Block	4 Circuit Shorting Block	6 Circuit Shorting Block
	UNITS			
ELECTRICAL				
Voltage Rating	V	600		
Maximum Current Rating				
Unprepared Wire	A	30		
Prepared Wire	A	60		
MECHANICAL				
		UL and CSA Applications		
Conductor Material		Cu		
Conductor Range [Unprepared]	AWG	#18 to #10		
Conductor Range [Prepared]	AWG	#18 to #6		
Ring Terminal Compatibility	AWG	#18 to #6		
Maximum Terminal Tightening Torque	lb-in. / Nm	23 / 2.6		
ENVIRONMENTAL				
		UL and CSA Applications		
Operating Temperature	°C/°F	-20 to +106 / -4 to +176		
ROHS COMPLIANCE				
For RoHS compliance documentation by product, refer to c3controls.com.				

For complete ratings, detailed specifications, or to download product certifications visit c3controls.com.

CERTIFICATIONS

Conformity to Standards:

High Density Terminal Blocks
UL 1059
CSA C22.2 No. 65, 188
IEC 60947-1, 60947-7



High Density Shorting Terminal Blocks

UL 1059
CSA C22.2 No. 65, 188
IEC 60947-1, 60947-7



Certifications:

UL File #: E145984 (Guide XCFR2, XCFR8)

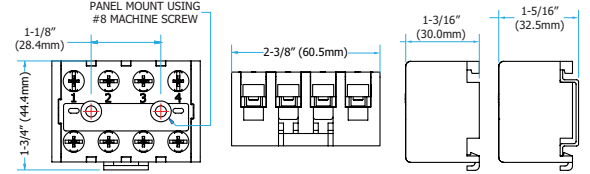
CE Marked (per EU Low Voltage Directive 2006/95/EC and RoHS Directive 2011/65/EU)

UL File #: E145984

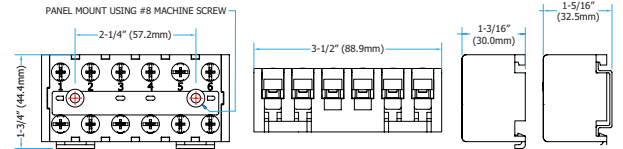
CE Marked (per EU Low Voltage Directive 2006/95/EC and RoHS Directive 2011/65/EU)

DIMENSIONS

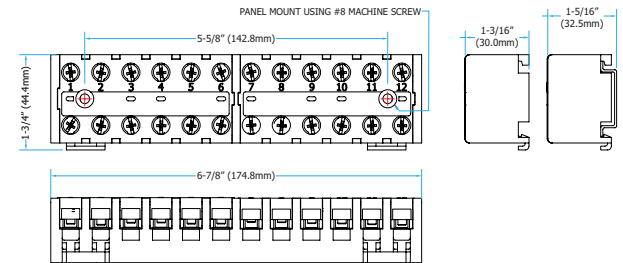
HDTB-4



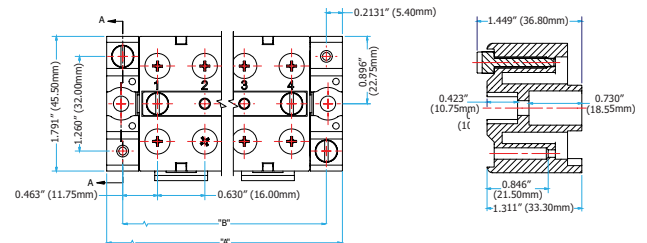
HDTB-6



HDTB-12

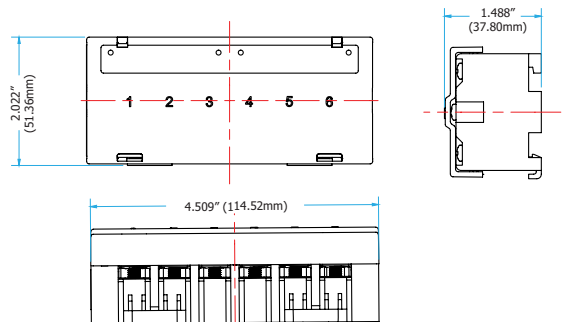


HDTB-SB-2/4/6



HDTB SIZES			
CATALOG #	# OF POLES	A	B
HDTB-SB-2	2	1.98" (50.30mm)	1.56" (39.50mm)
HDTB-SB-4	4	3.24" (82.30mm)	2.81" (71.50mm)
HDTB-SB-6	6	4.50" (114.30mm)	4.07" (103.50mm)

HDTB-SB-6-C



c3controls

Copyright © 2025 c3controls. All Rights Reserved.

724.775.7926 | c3controls.com

REVISION 01.2025