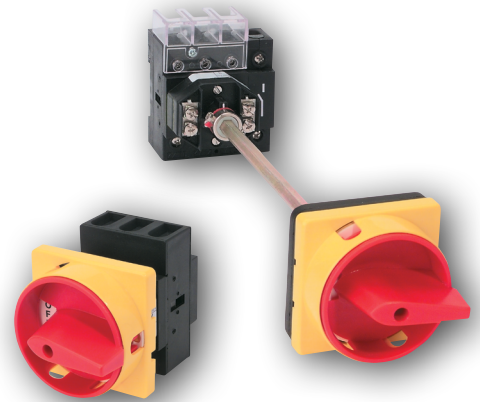


NON- FUSED **DISCONNECT SWITCHES**



SERIES DS PRODUCT PROFILE

c3controls **Series DS Non-Fused Disconnect Switches** and **Series EDS2 Enclosed Disconnects** deliver superior performance in the most rugged applications and are certified as Manual Motor Controllers Suitable as Motor Disconnects for motors up to 40HP at 480V (55kW at 400V). Panel/Base and door mounting options allow switches to be installed in virtually any enclosure.

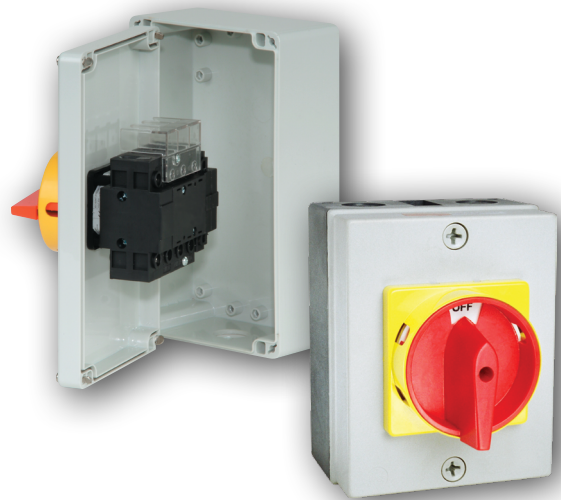


FEATURES AND BENEFITS

- Complete assembled switches with operating handles for JIT manufacturing and reduced inventory.
- Installations available for both door mount and panel/base mount.
- 10kA short circuit rating at 600V AC with Class J fuses.
- Positive drive to open double break contacts to ensure circuit isolation.
- Compact, space saving design for reduced size control panels.
- Wide variety of operating handle styles and colors with Type 1, 2, 3, 3R, 4/4X, 12 and 13, IP55, and IP65 ingress protection ratings for the most demanding industrial environments.
- Glass filled polyamide thermoplastic housings are ARC track resistant and provide insulation between poles.
- Line side terminal shield (provided as standard) and IP20 terminals guard against accidental contact with live parts.
- Integral captive terminal clamps are shipped in the backed-out position for easy wiring and are plated for corrosion resistance.
- Auxiliary contacts, power poles, and neutral poles install on the left or right side of the switch.
- Operating handles with ON/OFF and international I/O symbols, can be padlocked OFF with up to three padlocks to meet U.S. and global installation codes and standards requirements.
- Door interlock, can only be opened in the OFF position.
- Positive, reliable actuation of the switch is ensured through the rigid operating shaft that can be cut to length to fit your enclosure depths.
- Pistol operating handles include a concealed "defeater mechanism" that must be operated with a tool. Allows entry into the enclosure with the switch in the ON position.

ENCLOSED DISCONNECT FEATURES

- A variety of compact, lift-off cover ABS Plastic, Polycarbonate and Carbon Steel enclosures with Type 1, 4X, 12, 13 and IP65 ratings for the most demanding applications—including wash-downs and corrosive environments.
- Red/Yellow or Black/Grey operating handles that can be padlocked in the "OFF" position with up to three padlocks for extra safety and the security needed during maintenance activities.
- The modular switch design allows three and four pole switches and auxiliary contacts to be specified for application flexibility.
- Switches include IP20 terminals. A line-side terminal shield is provided as standard on the disconnect switches to guard against accidental contact with live parts.
- ABS Plastic enclosed disconnect switches feature panel/base mount switches for ultimate ease of wiring.



c3controls[®]

Copyright © 2023 c3controls. All Rights Reserved.

724.775.7926 | www.c3controls.com

REVISION 03. 2023



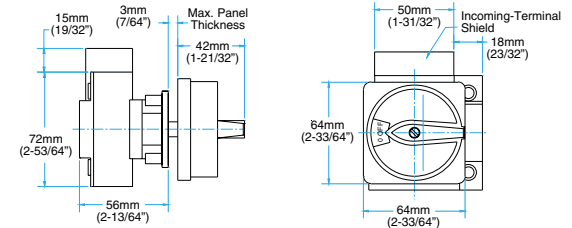
NON-FUSED DISCONNECT SWITCHES

SPECIFICATIONS

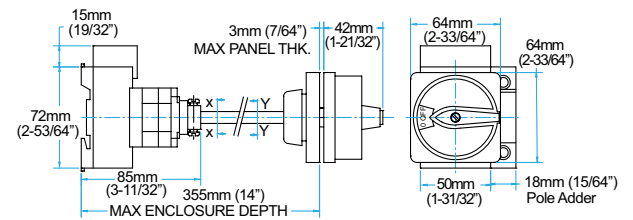
SWITCH CURRENT RATING CODE		16	25	30	40	60
	UNITS					
ELECTRICAL UL/CSA APPLICATIONS						
Rated Operating Voltage, Ue	VAC	600				
Rated Operating Current, Ie	A	16	25	32	40	63
RATED 3-PHASE POWER, Pe						
@ 240V AC	HP	3	7.5	7.5	10	15
@ 480V AC	HP	7.5	15	20	20	25
@ 600V AC	HP	10	20	25	30	30
RATED SINGLE PHASE POWER, Pe						
@ 120V AV	HP	0.5	1.5	2	3	3
@ 240V AC	HP	1.5	2	3	5	7.5
SHORT CIRCUIT RATINGS @ 600V AC						
With Class J Fuses	kA	10				
Maximum Fuse Size	A	20	45	45	70	70
ELECTRICAL IEC APPLICATIONS						
Rated Insulation Voltage, Ui	VAC	750				
Rated Impulse Voltage, Uimp	kV	6				
Rated Operating Voltage, Ue	VAC	690				
RATED OPERATING CURRENT, Ie						
AC-22A	A	16	25	32	40	63
AC-1	A	20	32	40	63	80
RATED 3-PHASE POWER, AC-23A, Pe						
@ 220 ~ 240V AC	kW	7.5	11	15	22	30
@ 380 ~ 440V AC	kW	15	22	22	45	45
@ 500 ~ 690V AC	kW	15	22	22	45	45
RATED 3-PHASE POWER, AC-3, PE						
@ 220 ~ 240V AC	kW	4	8	11	15	22
@ 380 ~ 440V AC	kW	5.5	15	15	30	30
@ 500 ~ 690V AC	kW	11	15	15	30	30
SHORT CIRCUIT RATINGS						
With Type gG Fuses	kA	5	30			
Maximum Fuse Size	A	20	32	32	63	63
MECHANICAL						
Operating Torque (Door Mount)	Nm	0.45	0.8			
	Lb-in.	4.0	7			
Operating Torque (Panel Mount)	Nm	0.45	1.0			
	Lb-in.	4.0	9			
ENVIRONMENTAL						
Ambient Operating Temperature	°C/°F	-25 to 55° C (-13 to 131° F)				
Altitude	m/ft.	2,000/6,528				
Ingress Protection						
Switch Body	IP	20				
Operating Handles	—	IP55, IP65	Type 1, 2, 3, 3R, 4/4X, 12 and 13 IP65 and IP30			
Enclosures	—	Type 1, 4X, 12, 13 and IP65				
CONSTRUCTION						
CONDUCTOR SIZE						
UL/CSA	AWG	1x18~12, 2x18~12	1 x 18 ~ 10, 2 x 18 ~ 12		1 x 12 ~ 6, 2 x 12 ~ 8	
Solid/Multi-Strand	mm ²	1 ~ 4	2.5 ~ 10	2.5 ~ 10	6 ~ 25	6 ~ 25
Fine Strand with Sleeve	mm ²	0.5 ~ 6	0.75 ~ 6	0.75 ~ 6	2.5 ~ 10	2.5 ~ 10
Terminal Torque	Nm	0.8	1.7	1.7	2	2
	Lb-in.	7.1	15	15	17.7	17.7
ROHS COMPLIANCE For RoHS compliance documentation by product, refer to www.c3controls.com .						

DIMENSIONS

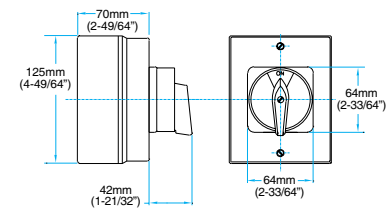
Series DDS2 - Door Mount Switch with DHG Handle (25A - 63A)



Series PDS2 - Panel Mount Switch with PHG Handle (25A - 63A)



Series EDS2 - ABS Enclosed Panel Mount Switch with Round Handle (25A - 32A)



NOTE: (4) M20 Knockout's provided - two on top and two on back.

CERTIFICATIONS

Conformity to Standards:

DISCONNECT SWITCHES
UL 508
CSA C22.2 No. 14
IEC 60947-1, 60947-3

Certifications:

UL File #: E187641 (Guide NLRV2, NLRV7, NLRV8, NLRV)
CE Marked (per EU Low Voltage Directive 2006/95/EC and RoHS Directive 2011/65/EU)



ENCLOSURES

UL 50
CSA C22.2 No. 94
IEC 60529

UL Listed
CSA Certified



For additional ratings, detailed specifications, and to download CAD drawings and product certifications visit www.c3controls.com.



c3controls[®]

Copyright © 2023 c3controls. All Rights Reserved.

724.775.7926 | www.c3controls.com

REVISION 03. 2023