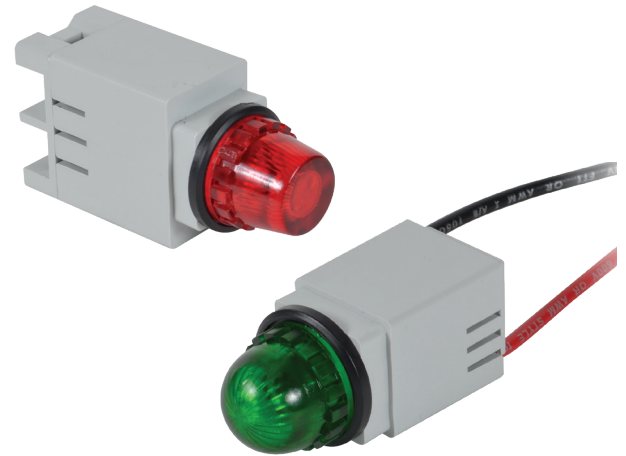


13MM PILOT LIGHTS

series 13 SERIES 13 PRODUCT PROFILE

c3controls' line of **13mm LED Pilot Lights** utilizes traffic-signal LED technology for superior visibility and brightness, even in direct sunlight. All light units come standard with Type 4/4X ingress protection. Each unit is provided with a dress ring/panel gasket to accommodate a 1/2" (13mm) mounting hole.



DURABLE AND EFFICIENT LIGHTS FOR YOUR SMALLEST APPLICATIONS

✓ Proven	Our 13mm pilot lights are UL Listed, CE Marked, and are rated Type 4/4X as standard for watertight and corrosion resistance. Also rated for Type 1, 2, 3, 3R, 12 & 13 and IP20.
✓ Multiple Applications	Light units come with internal resistors to match various AC and DC voltages.
✓ Quick & Simple	Front panel mounting for simple installation and lamp replacement.
✓ Simple Customization	Various lens color options are available for appropriate operator interface.
✓ Low Energy Consumption	Super bright LED lamps last 100,000 hours—that's 11.4 years!
✓ Quality Materials	c3controls selects the highest quality raw materials to ensure our products outlast the competition, including Lexan™ plastic for our lenses—improving visibility and resistance to high impact for reliable performance, even in high ambient temperatures.
✓ Heavy Duty	Polyester construction provides superior durability, corrosion resistance, moisture rejection and electrical insulation.
✓ Visible Certifications	Our product certifications and electrical ratings are clearly marked on the outside of the operator for easy reference during installation.
✓ Limited Lifetime Warranty*	Every product is backed by our limited lifetime warranty—unmatched in the industry—bringing you quality components that perform in the most demanding applications.
✓ Guaranteed Same-Day Shipping*	Product availability reduces inventory, and improves cash-flow—saving you money. With c3controls any order for standard catalog items received by 6:00pm ET is guaranteed to ship same-day.
✓ Advantage Pricing	Our approach to product development, manufacturing, and focus on servicing the OEM and Electrical Equipment Builder reduces cost. The result—the best value in the industry.

*See c3controls Terms & Conditions

UNIQUE FEATURES

Compact Design

- Behind the panel dimensions as small as 9/16" x 1-27/64" (14.3mm x 36.1mm).

Wide Range of Voltages

- Our 13mm pilot lights have a voltage range from 6V to 480V.

Flexibility

- Our customers have the flexibility to order standard screw terminals or custom length factory installed wire leads.

Enhanced Safety

- Optional IP20 guards are available, featuring snap in-place design for easy field installation.



c3controls®

Copyright © 2022 c3controls. All Rights Reserved.

724.775.7926 | www.c3controls.com

REVISION 01.2021



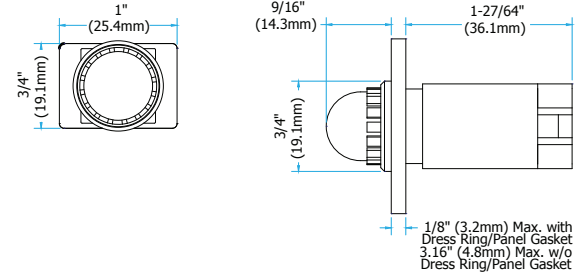
13MM PILOT LIGHTS

SPECIFICATIONS

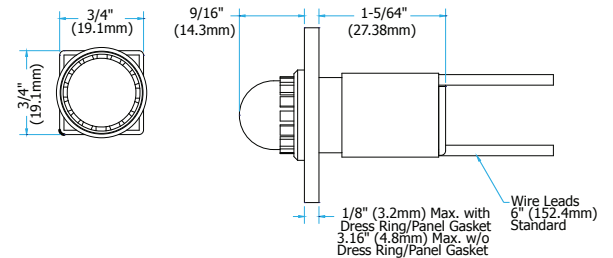
UNITS							
ELECTRICAL RATINGS							
Lamp Type	Rated Volts	Lumens (MSCD)	Design Life (Hrs.)	Current Draw (mA)	Shock & Vibration		
LED	6V	Very Bright. Varies w/ Color 2000 mcd	100,000	20-50	Excellent		
	12V			20-30			
	24V			25			
	120V			12			
	240V			25			
† LED voltage tolerance is +/- 10%							
DIELECTRIC STRENGTH (TERMINAL TO GROUND)		1960V for 1 Minute					
ENVIRONMENTAL RATINGS							
Operators	Rated and Certified for use in Type 1, 2, 3, 3R, 4/4X, 12 & 13 and IP20						
Operating Temperatures	°F / °C	-40 to +131 / -40 to +55					
Storage Temperatures	°F / °C	-40 to +185 / -40 to +85					
TERMINAL & WIRING CONSIDERATION (SCREW TERMINATION)							
AWG Conductor	22-12 CU (Copper Only)						
Solid Strand Conductor*	mm ²	.5 ~ 4					
Fine Strand Conductor*	mm ²	.5 ~ 4					
Recommended Torque	Lb-in.	7 (+3.0/-0.0)					
	Nm	.8					
*One or Two wires permitted per termination.							
MATERIALS							
Operator Housings	Thermoplastic Polyester and Polyester Blends - (UV Stabilized for outdoor use)						
Structural Parts	Thermoplastic Polyester and Polyester Blends - (UV Stabilized for outdoor use)						
Terminal Supports	Thermoplastic Polyester and Polyester Blends - (UV Stabilized for outdoor use)						
Pilot Light Lens	High Impact Polycarbonate - (UV Stabilized for outdoor use)						
Seals	Thermoplastic - Elastomer Molded Seals						
Terminations	Brass (Not Plated Brass)						
Terminal Screws	Plated Steel - Self Lifting Clamps						
ROHS COMPLIANCE		For RoHS compliance documentation by product, refer to www.c3controls.com .					

DIMENSIONS

LED Terminal Screw Indicating Light



LED Wire Lead Indicating Light



CERTIFICATIONS

Conformity to Standards:

UL 508
 CSA C22.2 No. 14
 IEC 60947-1, 60947-5-1

Certifications:

UL File #: E68568 (Guide NKCR, NKCR7)
 CE Marked (per EU Low Voltage Directive 2006/95/EC and RoHS Directive 2011/65/EU)



Visit www.c3controls.com to download product certifications.



Copyright © 2022 c3controls. All Rights Reserved.

724.775.7926 | www.c3controls.com

REVISION 01.2021