

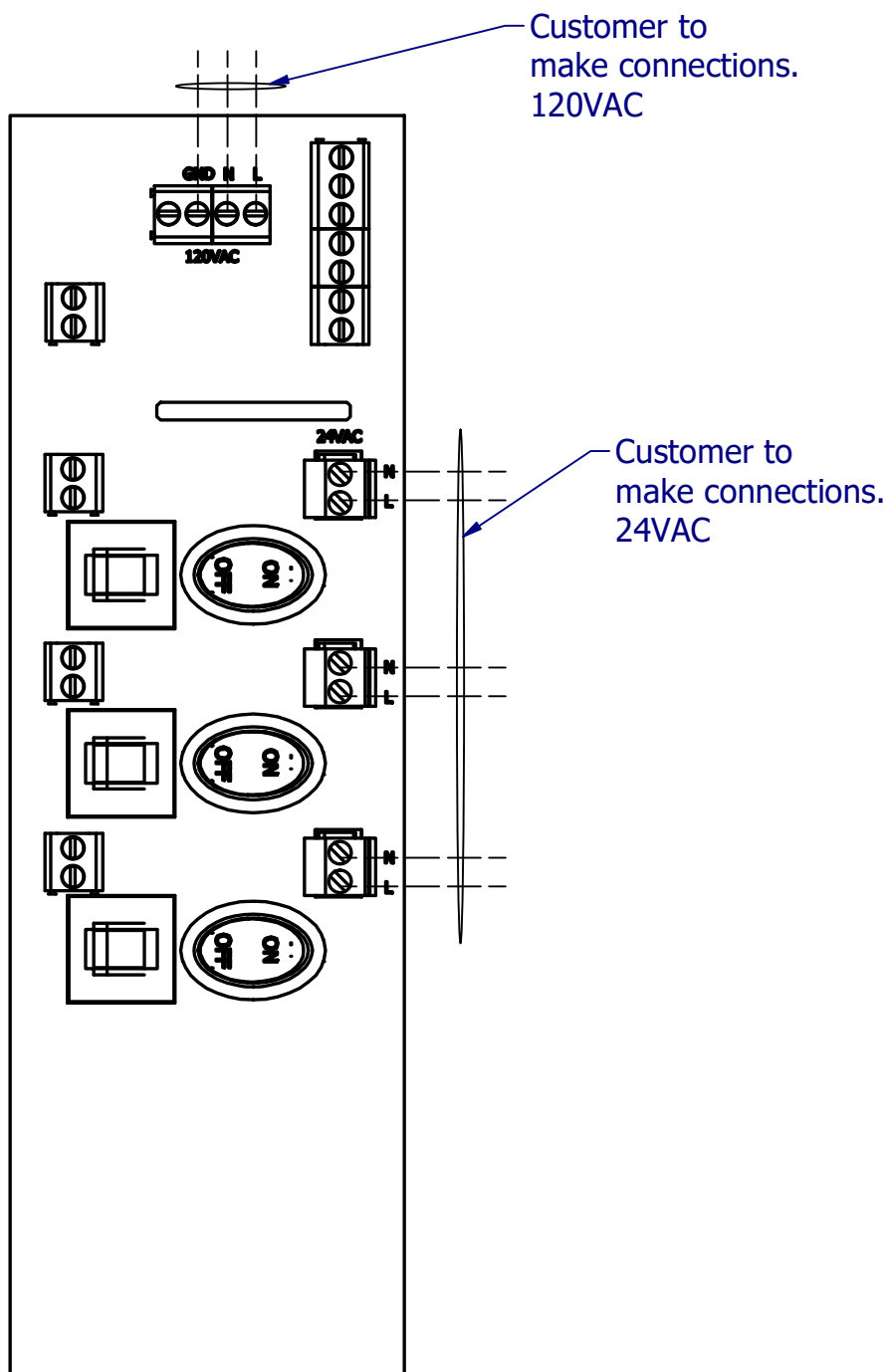
VIEW1 - Enclosure With Covers Off  
SCALE 1/2



## WARNING

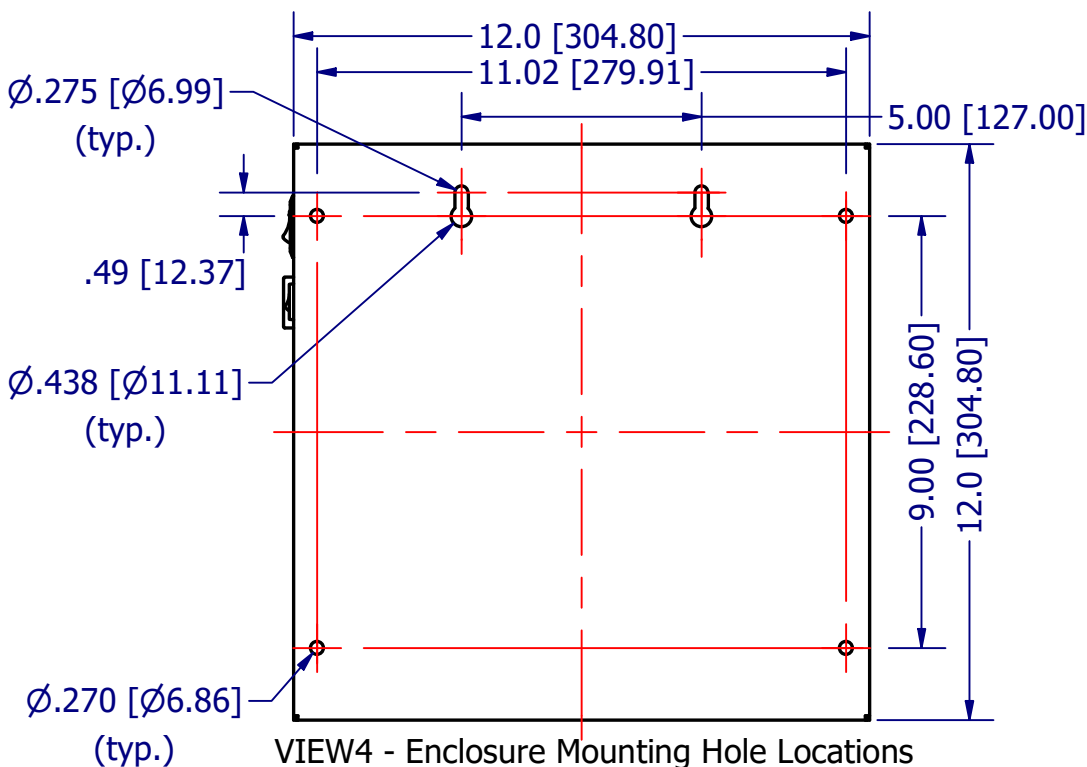
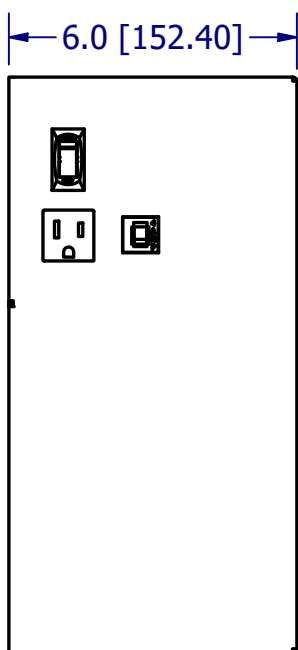
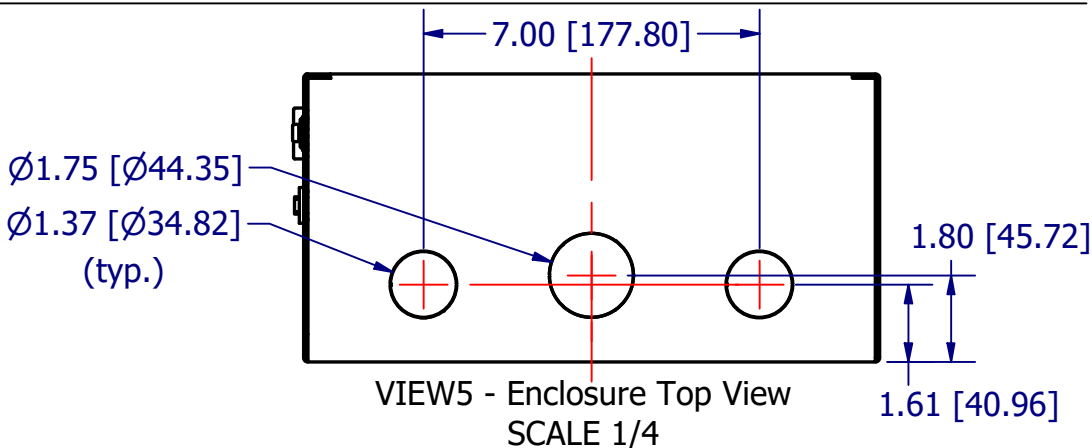
- \* Disconnect Power before proceeding with any work on this equipment.
- \* Installation and maintenance by technical personnel only.
- \* Installation of c3controls product must be in accordance with the NEC (U.S. National Electrical Code) regulations or local codes/standards per your application.
- \* Any violation of these safety requirements could result in a personal injury and/or result in damage to the equipment.

VIEW2 - PCBA Connections  
SCALE 3/4



## Recommended Wiring Information

- Use 24-12 AWG wire.
- Use 60/75°C Solid or Stranded Copper Conductors only.
- Wire Strip Length: 7/0.28 (mm/in).
- Terminal Torque: 0.5/6 (Nm/lb-in).



## TOLERANCE

Dimensions: in [mm]  
X.X +/- 0.040 [1.00]  
X.XX +/- 0.010 [0.25]  
X.XXX +/- 0.005 [0.13]  
X.XXXX +/- 0.001 [0.03]  
ANGLES +/- 0.5 DEG  
UNLESS OTHERWISE  
SPECIFIED

