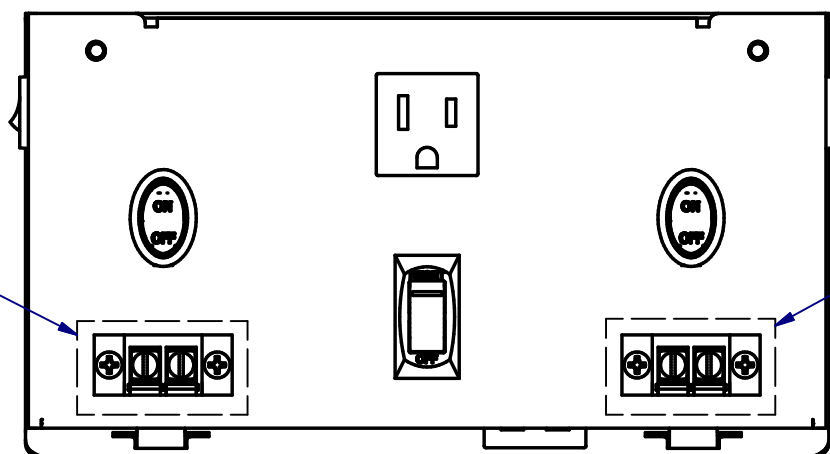


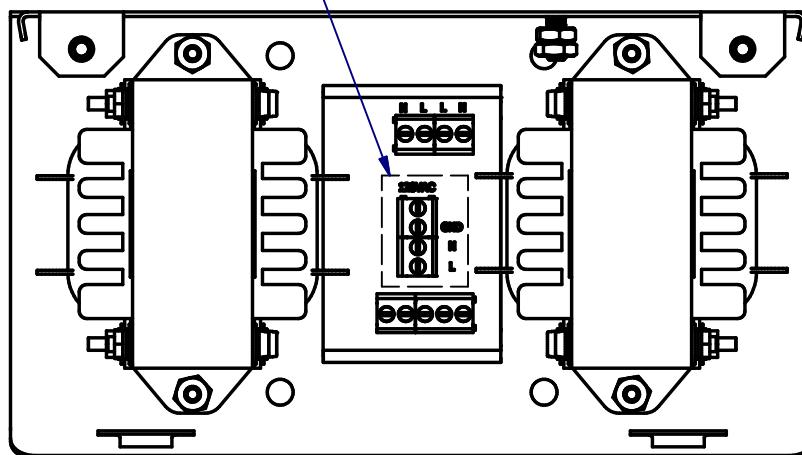
Customer to  
make connections.  
See pg 2 for details.



Customer to  
make connections.  
See pg 2 for details.

VIEW1 - Enclosure With Cover On  
SCALE 1/2

Customer to  
make connections.  
See pg 2 for details.



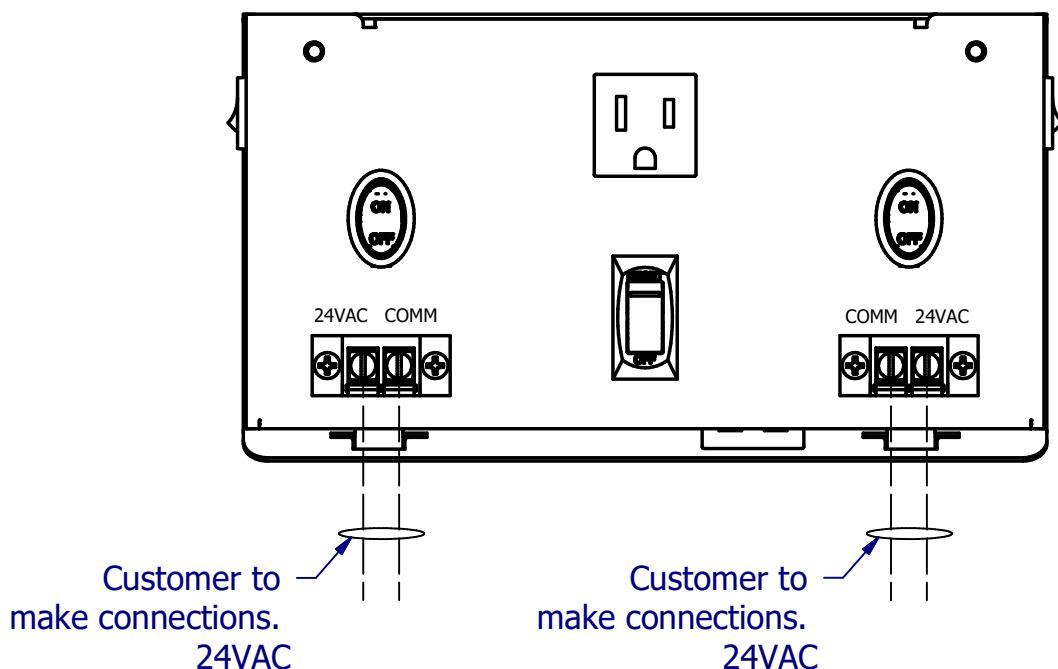
VIEW2 - Enclosure With Cover Off  
SCALE 1/2



## WARNING

- \* Disconnect Power before proceeding with any work on this equipment.
- \* Installation and maintenance by technical personnel only.
- \* Installation of c3controls product must be in accordance with the NEC (U.S. National Electrical Code) regulations or local codes/standards per your application.
- \* Any violation of these safety requirements could result in a personal injury and/or result in damage to the equipment.

VIEW3 - Enclosure With Cover On  
SCALE 1/2



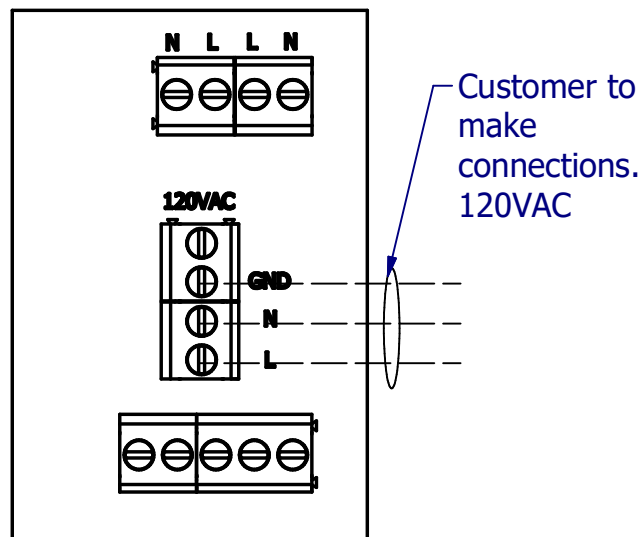
## Recommended Wiring Information

### For PCBA Wiring:

- Use 24-12 AWG wire.
- Use 60/75°C Solid or Stranded Copper Conductors only.
- Wire Strip Length: 7/0.28 (mm/in).
- Terminal Torque: 0.5/6 (Nm/lb-in).

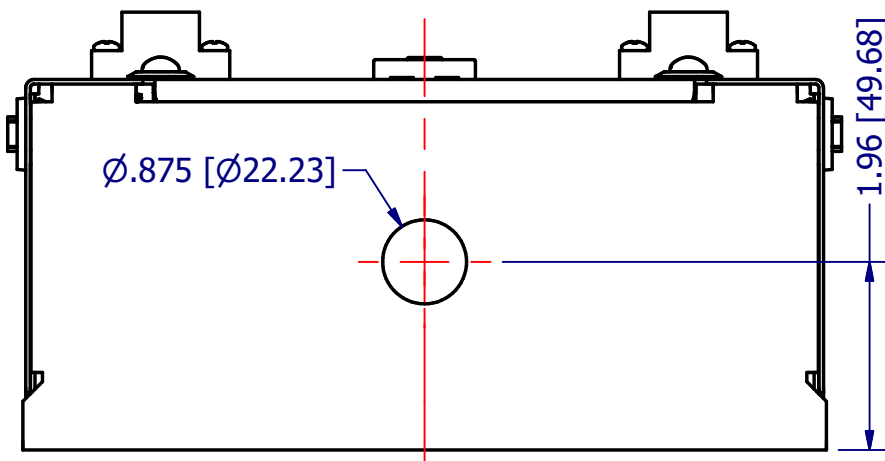
### For Block Connector Wiring (Located on Cover):

- Use 22-12 AWG wire.
- Use 60/75°C Solid or Stranded Copper Conductors only.
- Wire Strip Length: 9/0.35 (mm/in).
- Terminal Torque: 0.8/7 (Nm/lb-in).

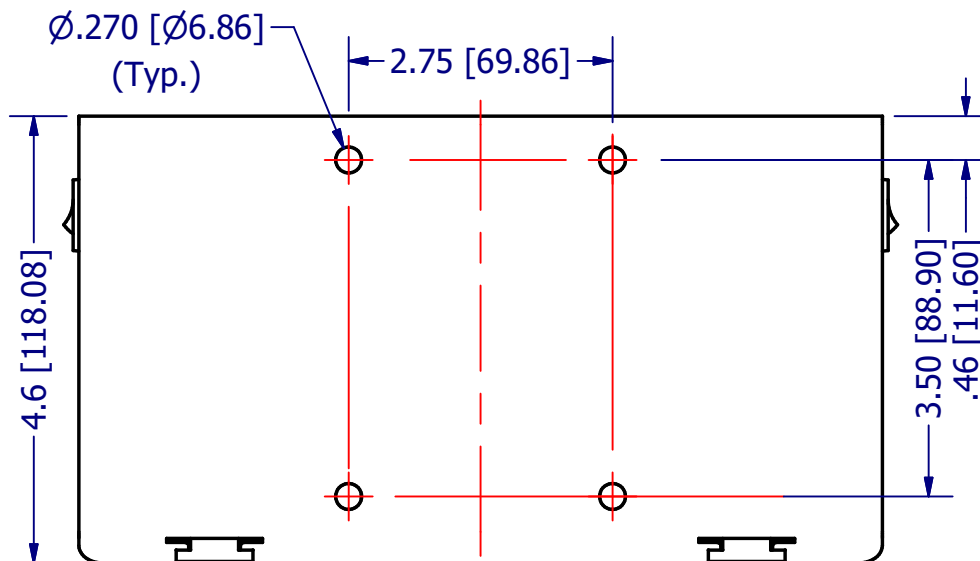


VIEW4 - PCBA Connections  
SCALE 1 : 1

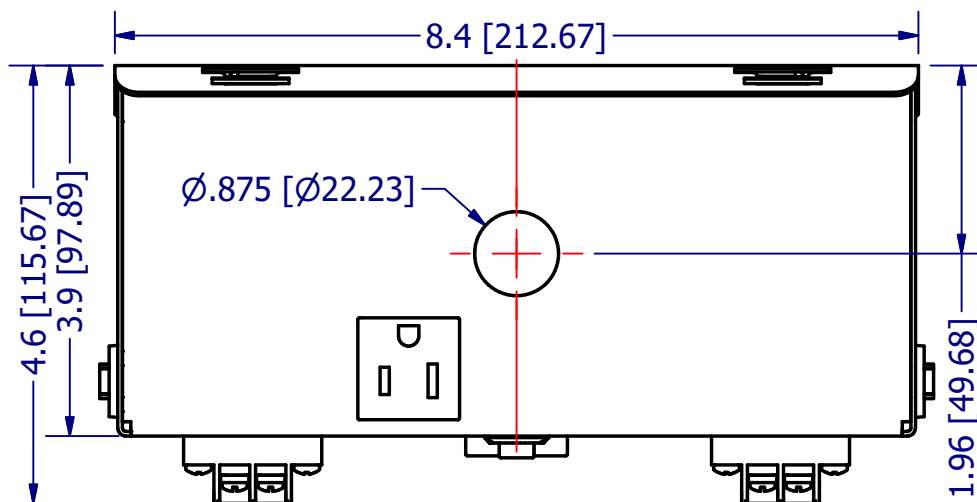
VIEW7 - Enclosure Top View  
SCALE 1/2



VIEW5 - Enclosure Back View  
SCALE 1/2



VIEW6 - Enclosure Bottom View  
SCALE 1/2



## TOLERANCE

Dimensions: in [mm]

X.X +/- 0.040 [1.00]

X.XX +/- 0.010 [0.25]

X.XXX +/- 0.005 [0.13]

X.XXXX +/- 0.001 [0.03]

ANGLES +/- 0.5 DEG

UNLESS OTHERWISE  
SPECIFIED