

- Notes:
- Use UL 1015 VW-1 600V MTW 75°C Solid or Stranded Copper Conductors.
 - The starter is wired for 480VAC or 600VAC 3PH as default.
 - To configure the starter for another operating voltage, the input to the control transformer must be changed.
 - To change the input to the control transformer, move the wire installed in the "480" terminal to the desired terminal (See pg 2).
 - Available operating voltages are: 120VAC & 240VAC single phase. 208VAC, 240VAC, 480VAC & 600VAC three phase.
 - To wire a desired input for use as the "AUTO" input, use the terminal block labeled "AUTO" and "24VAC" or "24COM" OR "120VAC" or "120COM" located at the bottom of the panel.
 - Up to 4 contactor AUX contacts can be added if needed [c3 Part # 300-SFA10 (for NO), c3 Part # 300-SFA01 (for NC)].

WARNING

- * Disconnect Power before proceeding with any work on this equipment.
- * Installation and maintenance by technical personnel only.
- * Installation of c3controls product must be in accordance with the NEC (U.S. National Electrical Code) regulations or local codes/standards per your application.
- * Any violation of these safety requirements could result in a personal injury and/or result in damage to the equipment.

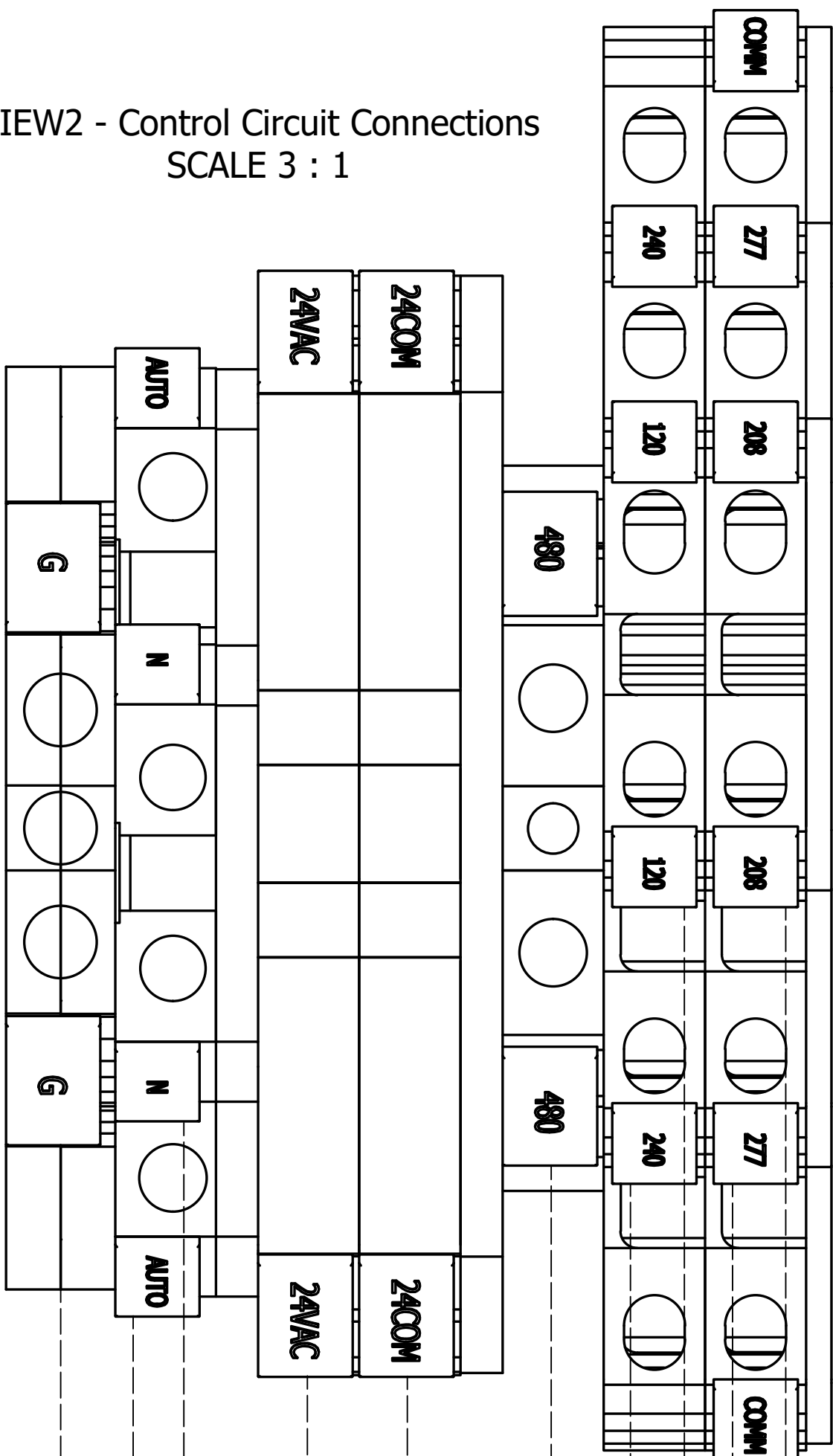
AVERTISSEMENT:

- * Débranchez le pouvoir(la puissance) avant la suite de n'importe quel travail sur cet équipement.
- * Installation et maintien par personnel technique seulement.
- * Installez des produits conformément aux instructions d'opération et le NEC (le Code Électrique national américain) des règlements ou des codes applicables locaux et des normes.
- * Toute violation de ces exigences de sécurité pourrait entraîner des blessures corporelles et/ou endommager l'équipement.

VIEW1 - Back Plate Assembly
SCALE 15/16

2	1/17/24	Updated Terminal Block Configuration		CB	CB
1	7/25/23	Released			CB
REV	DATE	DESCRIPTION		CHGD BY	APVD BY
REVISION HISTORY					
<div>TOLERANCE X.X +/- 0.040 [1.00] X.XX +/- 0.010 [0.25] X.XXX +/- 0.005 [0.13] X.XXXX +/- 0.001 [0.03] ANGLES +/- 0.5 DEG UNLESS OTHERWISE SPECIFIED</div>		<div><div>Units: in [mm]</div><div>Drawn By: cbunnell</div><div>Modeled By: cbunnell</div><div>Approved By: cbunnell</div><div>Created On: 11/15/2021</div></div> <div><div><div><div>c3controls[®]</div><div>P.O. BOX 496 BEAVER, PA 15009 www.c3controls.com</div></div><div>Description: ECP-300-2XXX-M4 Enclosure - Customer Install Instructions (pg 1)</div></div></div>			
<div>This drawing is the property of c3controls. This drawing may not be copied, used or disclosed, for any purpose except as authorized in writing by c3controls.</div>					
		Rev #: 2	Size: C	Scale: n/a	Part Number: 12E00121

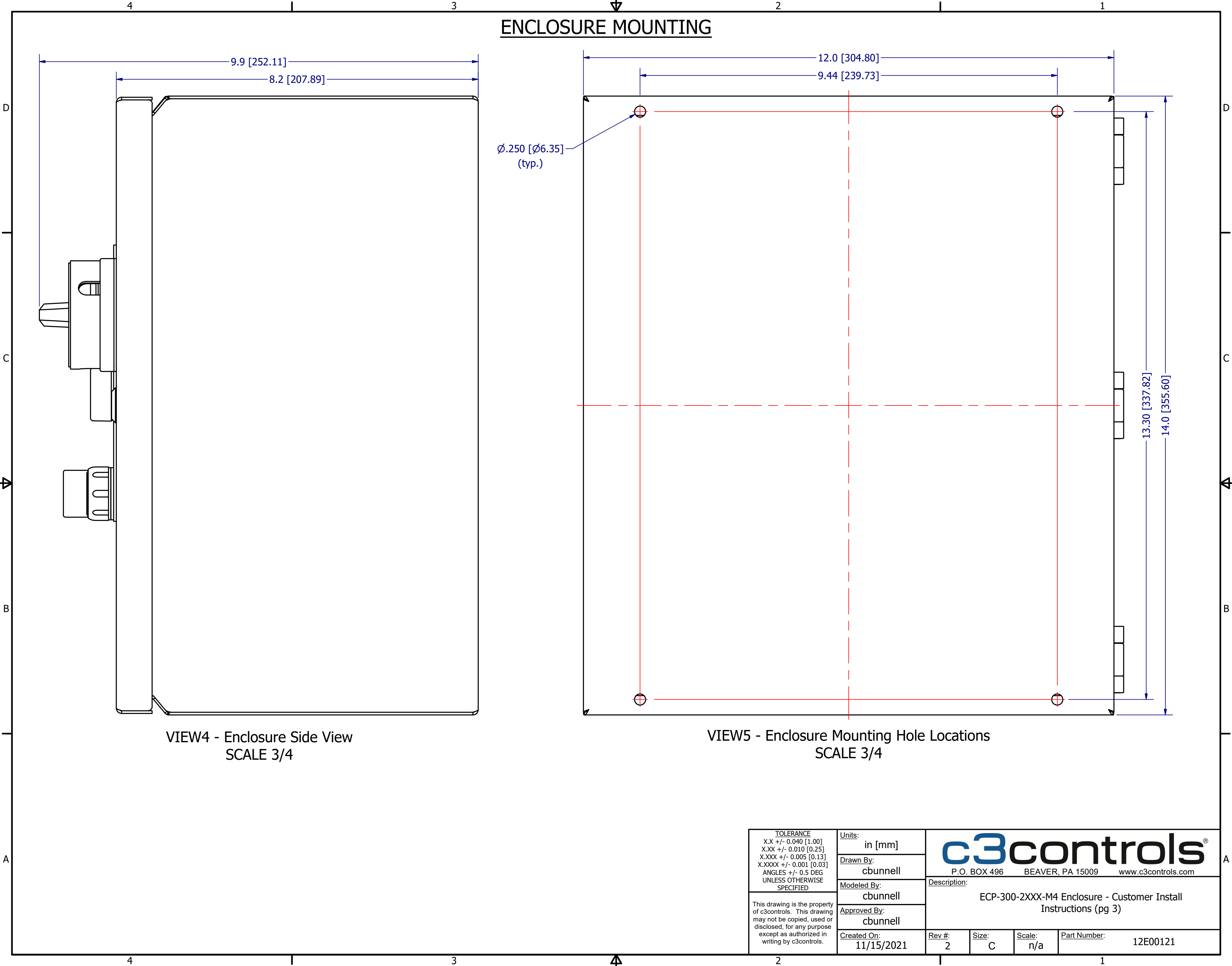
VIEW2 - Control Circuit Connections
SCALE 3 : 1



Notes:

- Terminal block marker "480" will be labeled "600" for the 600V transformer configuration.
- Terminal block marker "24VAC" will be labeled "120VAC" for the 120V output transformer configuration.
- Terminal block marker "24COM" will be labeled "120COM" for the 120V output transformer configuration.

<div>TOLERANCE X.X +/- 0.040 [1.00] X.XX +/- 0.010 [0.25] X.XXX +/- 0.005 [0.13] X.XXXX +/- 0.001 [0.03] ANGLES +/- 0.5 DEG UNLESS OTHERWISE SPECIFIED</div> <div>This drawing is the property of c3controls. This drawing may not be copied, used or disclosed, for any purpose except as authorized in writing by c3controls.</div>	<div>Units:</div> <div>in [mm]</div>		<div>c3controls®</div> <div>P.O. BOX 496 BEAVER, PA 15009 www.c3controls.com</div>			
	<div>Drawn By:</div> <div>cbunnell</div>					
	<div>Modeled By:</div> <div>cbunnell</div>		<div>Description:</div> <div>ECP-300-2XXX-M4 Enclosure - Customer Install Instructions (pg 2)</div>			
	<div>Approved By:</div> <div>cbunnell</div>					
	<div>Created On:</div> <div>11/15/2021</div>					
		<div>Rev #:</div> <div>2</div>	<div>Size:</div> <div>C</div>	<div>Scale:</div> <div>n/a</div>	<div>Part Number:</div> <div>12E00121</div>	



ENCLOSURE MOUNTING

VIEW4 - Enclosure Side View
SCALE 3/4

VIEW5 - Enclosure Mounting Hole Locations
SCALE 3/4

<div>TOLERANCE X.X +/- 0.040 [1.00] X.XX +/- 0.010 [0.25] X.XXX +/- 0.005 [0.13] X.XXXX +/- 0.001 [0.03] ANGLES +/- 0.5 DEG UNLESS OTHERWISE SPECIFIED</div> <div>This drawing is the property of c3controls. This drawing may not be copied, used or disclosed, for any purpose except as authorized in writing by c3controls.</div>	Units:	<div>c3controls®</div> <div>P.O. BOX 496 BEAVER, PA 15009 www.c3controls.com</div>			
	Drawn By:				
	Modeled By:	Description: ECP-300-2XXX-M4 Enclosure - Customer Install Instructions (pg 3)			
	Approved By:				
	Created On:	Rev #:	Size:	Scale:	Part Number:
	11/15/2021	2	C	n/a	12E00121