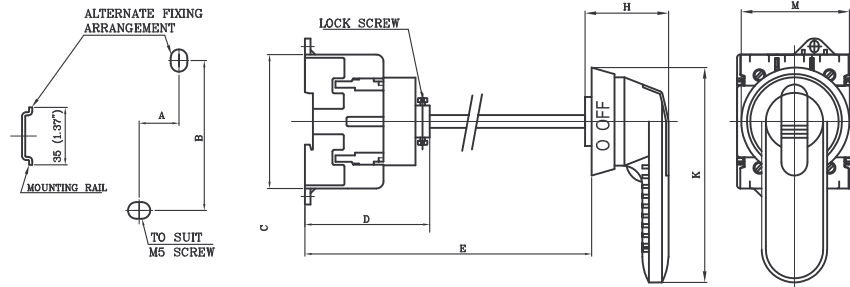
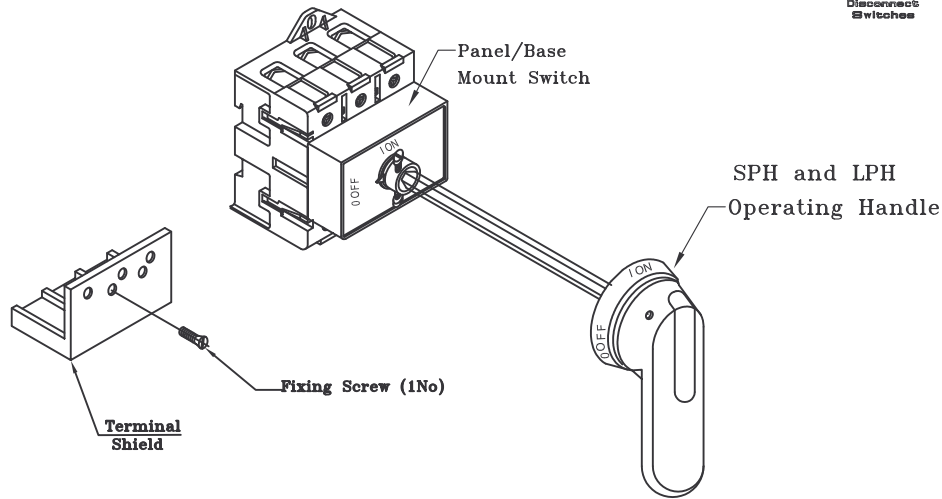


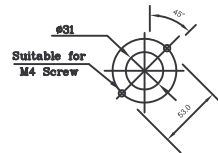
Non fused Disconnect Switch Installation Instructions

Panel / Base Mount Switches



Current Rating	A	B	C	D	E	G	H	K	M
25A to 63A	0	65 (2.6)	72 (2.8)	85 (3.4)	320 (12.6)	50 (1.97)	52 (2.05)	100 (3.94)	66 (2.59)
80A to 125A	25 (0.98)	94 (3.7)	85 (3.34)	77 (3.03)	300 (11.81)	72 (2.83)	52 (2.05)	155 (6.1)	88 (2.66)

DIMENSIONS WITHIN BRACKETS ARE INCHES.



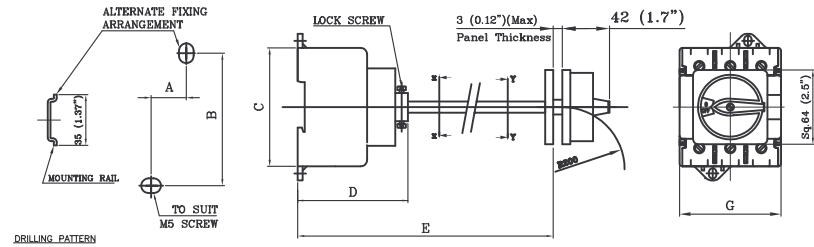
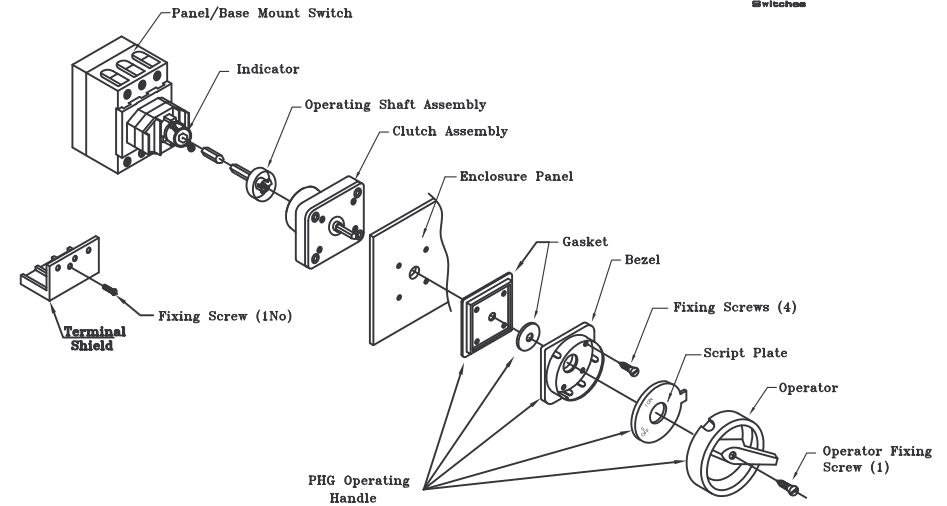
WARNING



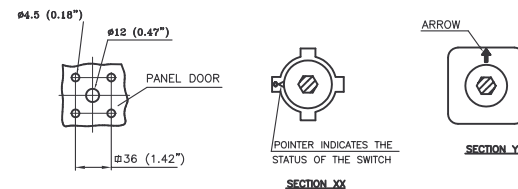
- Disconnect power before proceeding with any work on this equipment.
- Installation and maintenance by technical personnel only.
- Install products in accordance with the NEC (U.S. National Electrical Code) regulations or local applicable codes and standards.

Non-fused Disconnect Switch Installation Instructions

Panel / Base Mount Switches



DRILLING PATTERN



INSTALLATION PROCEDURE

1. Ensure the proper orientation of the operating handle and switch components during installation to avoid damage to the switch.
2. Install the clutch assembly on the back of the enclosure panel with the four (4) fixing screws provided. Ensure the arrow points upwards.
3. Install the bezel, script plate and operator with the operator pointing to the 'OFF' position. Do not over tighten the operator fixing screw. (Torque : 0.8Nm (7.08Lb-in))
4. Install the switch on the enclosure mounting plate in-line with the clutch assembly.
5. Cut the operating shaft to the appropriate length for the depth of the enclosure. Install the operating shaft in the switch and tighten the two (2) lock screws. (Torque : 1.2Nm (10.6Lb-in))

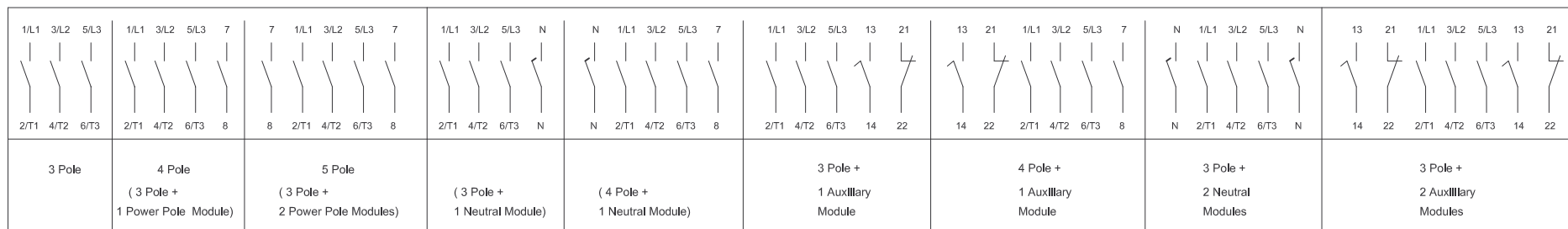
Current Rating	A	B	C	D	E	G
25A to 63A	0	65 (2.6)	72 (2.8)	85 (3.4)	355 (14)	50 (1.97)
80A to 125A	25 (0.98)	94 (3.7)	85 (3.34)	77 (3.03)	338 (13.3)	72 (2.83)

Dimensions within brackets are inches.

TECHNICAL DATA

DATA		Switch Current Rating Code		25	30	40	60	80	100	125	DATA		Switch Current Rating Code		25	30	40	60	80	100	125	
Rated Operating Voltage Ue											Short Circuit Capacity:											
IEC/EN/VDE	V	690	690	690	690	690	690	690	690	690	Max. Fuse size (Type gL) A		25	32	40	63	80	100	125			
UL/CSA	V	600	600	600	600	600	600	600	600	600	Rated fused short circuit current kA		30	30	30	30	30	30	30	30		
Rated Insulation Voltage, Ui		V		750	750	750	750	750	750	750	UL/CSA Ratings (Suitable for Use as a Motor Disconnect)											
Rated Impulse Voltage, Uimp		kV		6	6	6	6	6	6	6	DOL Rating		3 Phase		120V HP	3	3	5	7.5	5	7.5	7.5
Rated operational current													240V HP		7.5	7.5	10	15	10	15	15	
AC-21A	IEC/EN/VDE	A	25	32	40	63	80	80	100	125			480V HP		15	20	20	25	30	30	40	
AC-1A		A	32	40	63	80	80	80	100	125			600V HP		20	25	30	30	40	40	50	
	UL/CSA	Ampere Rating	A	25	32	40	63	80	100	125			1 Phase		120V HP	1.5	2	3	3	3	3	3
													240V HP		2	3	4	7.5	7.5	7.5	10	
Rated operational power at 50/60 Hz											Short Circuit Capacity:											
AC-23A	IEC/EN/VDE										Max. Fuse size (Class J) A		45	45	70	70	90	90	90			
	3 Phase	220-240V	kW	5.5	7.5	11	15	18.5	22	30	Rated fused short circuit current kA		10	10	10	10	10	10	10			
	3 Pole	380-440V	kW	11	15	18.5	30	30	37	45	Terminal cross section											
		500-690V	kW	11	15	22	30	37	45	55	American Wire Gauge		AWG Min-Max		10-8	10-8	10-6	10-6	10-1	10-1	10-1	
AC-3	IEC/EN/VDE										Recommended Tightening Torque		Lb-in		15	15	15	15	22	22	22	
	3 Phase	220-240V	kW	4	5.5	7.5	11	15	18.5	22												
	3 Pole	380-440V	kW	7.5	11	18.5	22	22	30	37												
	3 Pole	500-690V	kW	11	11	18.5	22	30	37	45												

Circuit Diagrams



Product installation data can be downloaded from our website, www.c3controls.com

Thank you for choosing

