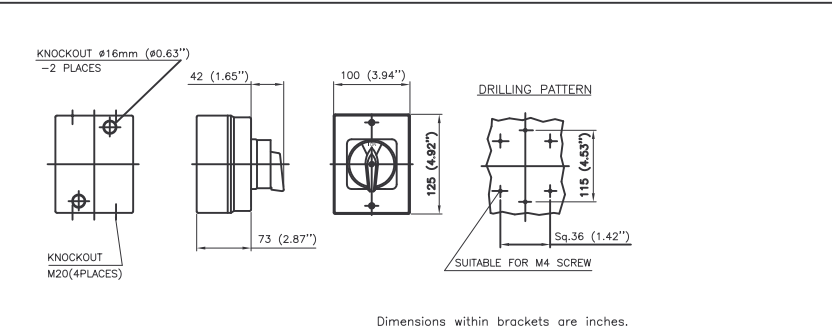
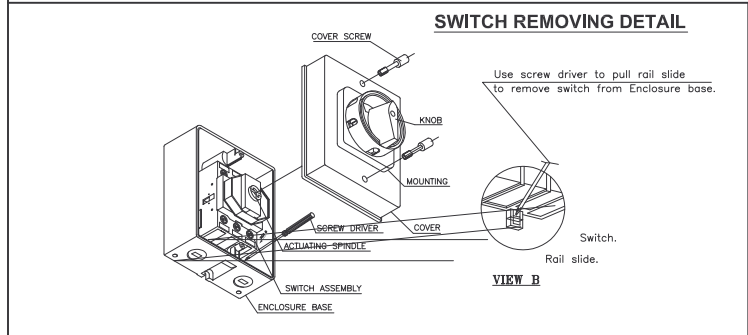


INSTALLATION PROCEDURE

1. Ensure the switch position to be in "OFF" condition.
2. Unscrew the cover screws (2) and remove the cover.
3. After wiring, ensure the profile orientation of the actuating spindle and knob shaft in the same position.
4. Place the cover with the base and tighten the cover screws (4) moderately. (Torque : 0.8Nm (7.08Lb-in))

WARNING

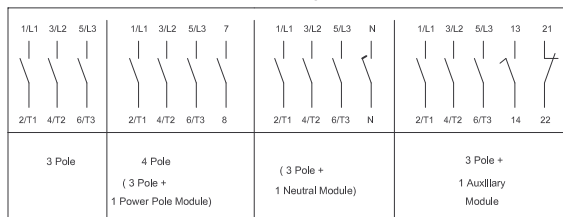
- * Disconnect power before proceeding with any work on this equipment.
- * Installation and maintenance by technical personnel only.
- * Install products in accordance with the NEC (U.S. National Electrical Code) regulations or local applicable codes and standards.



TECHNICAL DATA

DATA	Switch Current Rating	Code	25	30	DATA	Switch Current Rating	Code	25	30
Rated operating voltage Ue	V		690	690	Short Circuit Capacity:				
IEC/EN/VDE	V		600	600	Max. Fuse size (Type gL)	A		25	32
UL/CSA	V		750	750	Rated fused short circuit current	kA		30	30
Rated Insulation Voltage, Ui	kV		6	6	UL/CSA Ratings (Suitable for Use as a Motor Disconnect)				
Rated Impulse Voltage, Uimp	kV		6	6	DOL Rating	3 Phase	120V HP	3	3
Rated operational current						240V HP	7,5	7,5	
AC-21A IEC/EN/VDE	A		25	32		480V HP	15	20	
AC-1	A		32	40		600V HP	20	25	
UL/CSA Ampere Rating	A		25	32	1 Phase	120V HP	1,5	2	
Rated operational power at 50/60 Hz						240V HP	2	3	
AC-23A IEC/EN/VDE					Short Circuit Capacity:				
3 Phase	220-240V	kW	5,5	7,5	Max. Fuse size (Class J)	A		45	45
3 Pole	380-440V	kW	11	15	Rated fused short circuit current	kA		10	10
	500-690V	kW	11	15	Terminal cross section				
AC-3 IEC/EN/VDE					American Wire Gauge	AWG	Min-Max	10-8	10-8
3 Phase	220-240V	kW	4	5,5	Recommended Tightening Torque	Lb-in		15	15
3 Pole	380-440V	kW	7,5	11					
	500-690V	kW	11	11					

Circuit Diagrams



Product installation data can be downloaded from our website, www.c3controls.com
Thank you for choosing