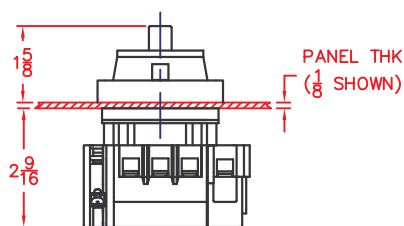
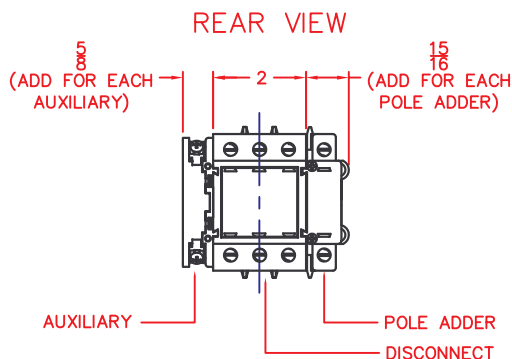


TOP VIEW



SIDE VIEW

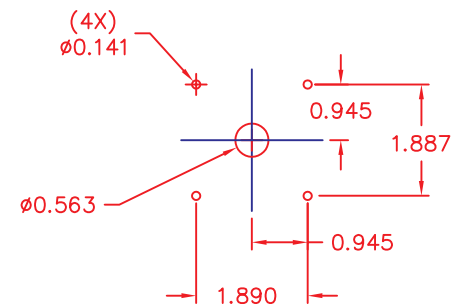


REAR VIEW

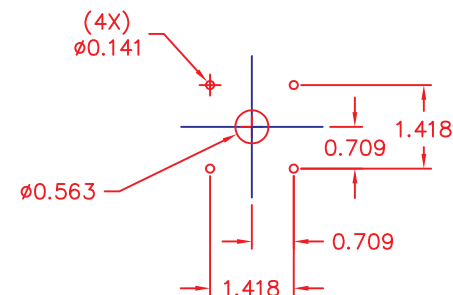


3-PHASE							
CATALOG #	GENERAL USE	120	240	480	600	TERM. TORQUE	FUSE
DDS330	600V, 30A	3hp	5hp	10hp	10hp	16-18, lb-in	35A
DDS340	600V, 40A	3hp	10hp	20hp	20hp	16-18, lb-in	60A
DDS360	600V, 60A	3hp	10hp	20hp	20hp	16-18, lb-in	70A
SINGLE-PHASE							
CATALOG #	GENERAL USE	120	240	480	600	TERM. TORQUE	FUSE
DDS330	600V, 30A	2hp	5hp	10hp	10hp	16-18, lb-in	35A
DDS340	600V, 40A	2hp	5hp	10hp	10hp	16-18, lb-in	60A
DDS360	600V, 60A	2hp	5hp </td <td>10hp</td> <td>10hp</td> <td>16-18, lb-in</td> <td>70A</td>	10hp	10hp	16-18, lb-in	70A

TECHNICAL SPECIFICATIONS



MOUNTING HOLE PATTERN FOR DOOR MOUNT DISCONNECT



1) These devices are suitable for use on circuits capable of delivering not more than 10,000 rms symmetrical Amperes, 600V ac max when protected by Class J fuse.

2) Wire - Use copper conductors only, range 6 - 14 AWG (60°/75° C)

3) Handle Mechanism - Suited for use in Type 1, 2, 3, 3R, 4, 4X, 12 and 13 applications when used on a flat surface of an enclosure that is rated appropriately.