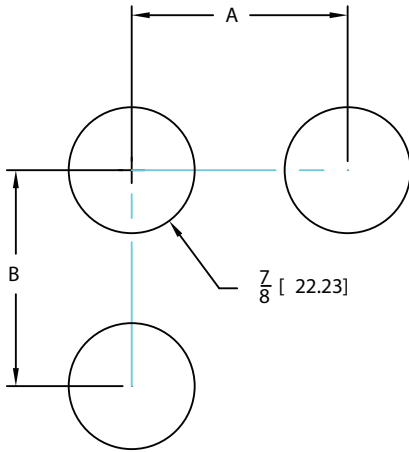




**MOUNTING INFORMATION**



SPACING	A	B
MIN	1-3/4"	1-3/4"
STANDARD	2"	2"

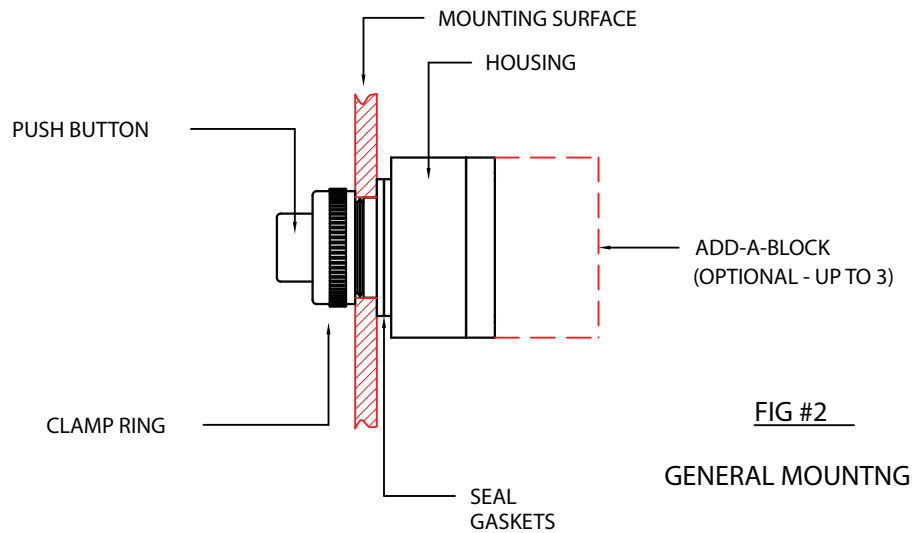
**FIG #1**

**MOUNTING HOLE PATTERN**

**TABLE 1 - MOUNTING GASKETS**

PANEL THICKNESS	GASKETS*
0.040-0.060	5
0.061-0.115	4
0.116-0.170	3
0.171-0.220	2

\* REMOVE ONE GASKET WHEN USING A LEGEND PLATE



**FIG #2**

**GENERAL MOUNTING**

**INSTALLATION INSTRUCTIONS**

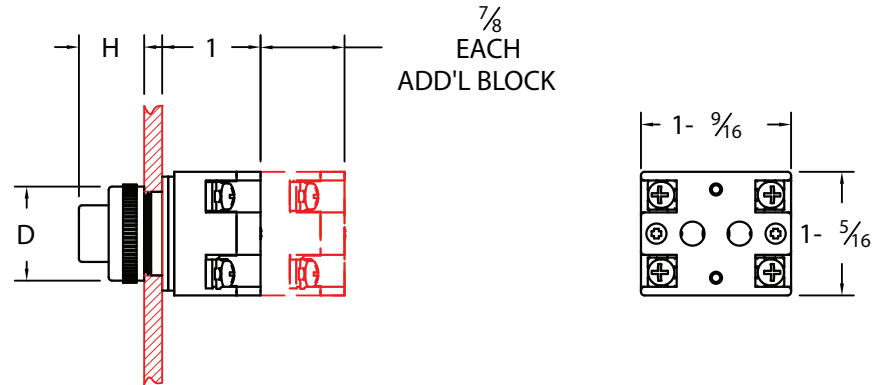
- 1) AFTER REMOVING THE OPERATOR FROM ITS PACKAGE, UNSCREW AND REMOVE THE CLAMP RING
- 2) TO ASSURE A GOOD SEAL, THE CORRECT NUMBER OF GASKETS MUST BE USED - REFER TO TABLE 1.
- 3) INSERT OPERATOR HOUSING FROM THE REAR OF PANEL, THROUGH THE PANEL MOUNTING HOLE - REFER TO FIGURE 2.
- 4) SECURE THE OPERATOR BY INSTALLING THE CLAMP RING. A TORQUE OF 10-14 LB-IN. WILL COMPRESS THE SEAL GASKETS MAKING THE OPERATOR TIGHT TO THE PANEL.

**ENVIRONMENTAL:**

- 1) SUITABLE FOR USE ON FLAT SURFACES OF TYPE 1, 3, 3R, 4, 4X, 12, & 13 ENCLOSURES

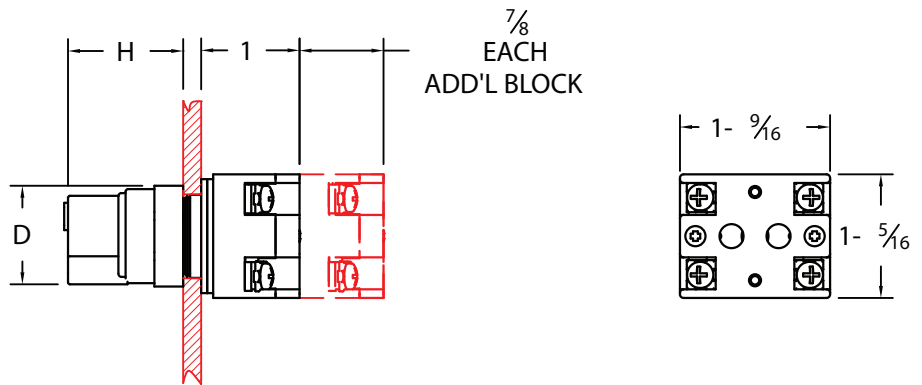


CAP TYPE	D	H
EXTENDED	19/32	11/16
FLUSH	19/32	11/16
JUMBO MUSH (1.33")	1-11/32	13/16
LARGE MUSH (1.16")	1-5/32	13/16
STANDARD MUSH (1.00")	15/16	3/4



PUSH BUTTONS

HANDLE TYPE	D	H
STANDARD	15/16	1-5/32
LEVER	1-13/16	1-5/32
GUARDED	1-1/8	1-5/32
KEY OPERATED	7/8	2-5/16



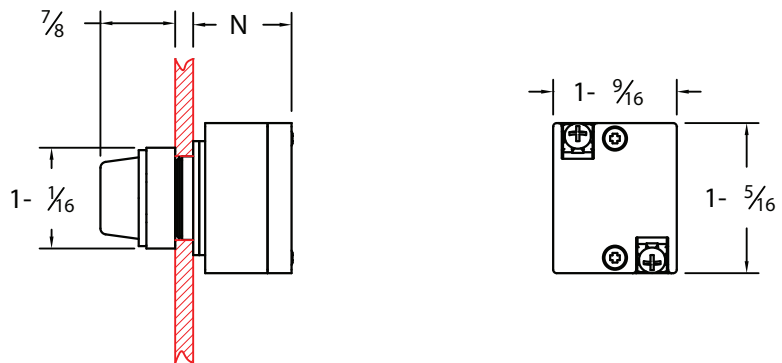
SELECTOR SWITCHES

**ADD-A-BLOCK DEVICE RATINGS**

AC  
 A600 (600Vac MAX)  
 10A CONTINUOUS THERMAL (MAX)  
 7200 VA MAKE  
 720 VA BREAK

DC  
 P300 (250 Vdc MAX)  
 5A CONTINUOUS THERMAL (MAX)  
 138 VA MAKE & BREAK

LIGHT TYPE	N
FULL VOLTAGE	1
RESISTOR	2
TRANSFORMER	2
DUAL INPUT	2



PILOT LIGHTS

