

Installation Instructions & Dimensional Drawings



13mm Non-Relampable
 Indicating Lights (Ser B)

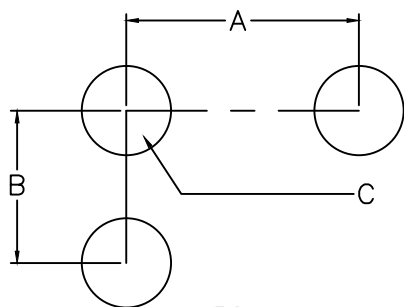
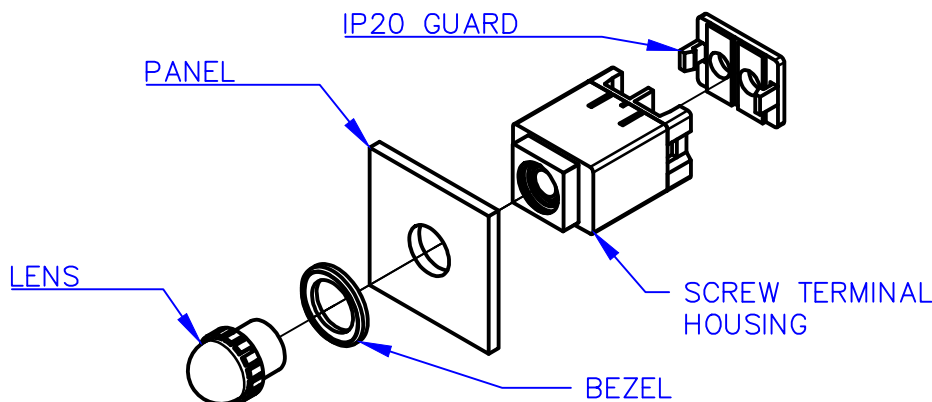
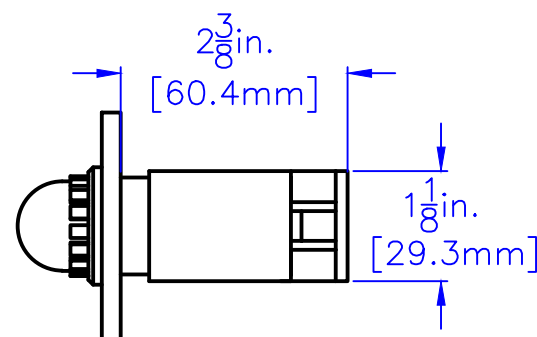


FIG #1
 MOUNTING HOLE PATTERN



MOUNTING HOLE PATTERNS		
DIMENSION	SCREW TERMINAL	WIRE LEAD
A	1 - 5/16"	7/8"
B	1"	7/8"
C	5/8" OR 1/2"	5/8" OR 1/2"



Important Notes:

ENVIRONMENTAL RATINGS

- Suitable for use on flat surfaces of Type 1, 3, 3R, 4, 4X, 12, & 13 Enclosures

TEMPERATURE RANGE

- Operating Temperature: -40 to +55°C (-40 to +131°F).
- Storage Temperature: -40 to +85°C (-40 to +185°F).

TERMINAL CAPACITY

- M3.5 x 0.6 Steel, plated terminal screws with self lifting captive wire clamps.
- Recommended wire size: 0.5 mm² ~ 4.0 mm² (#22 ~ #12 AWG) (Copper wire only- Solid & Stranded).
- One or two wires permitted per termination.
- Recommended terminal tightening torque 0.8-1.1 Nm (7-10 lb-in)

⚠ WARNING

- Disconnect power before proceeding with any work on this equipment.
- Installation and maintenance by technical personnel only.
- Installation of c3controls product must be in accordance with the NEC (U.S. National Electrical Code) regulations or local codes/standards per your application. Any violation of these safety requirements could result in a personal injury and/or result in damage to the equipment.

⚠ AVERTISSEMENT

- Débranchez le Pouvoir (la Puissance) avant la suite de n'importe quel travail sur cet équipement.
- Installation et maintien par personnel technique seulement.
- L'installation de produit c3controls doit être conformément au NEC (le Code Électrique national américain) des règlements ou des codes/normes locaux par votre demande. N'importe quelle violation de ces exigences de sécurité pourrait aboutir à une blessure personnelle et/ou aboutir aux dégâts à l'équipement.

Product dimensional drawings may be downloaded from our website, www.c3controls.com.

Installation Instructions & Dimensional Drawings



13mm Non-Relampable
 Indicating Lights (Ser B)

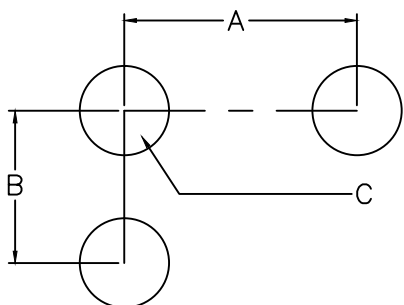
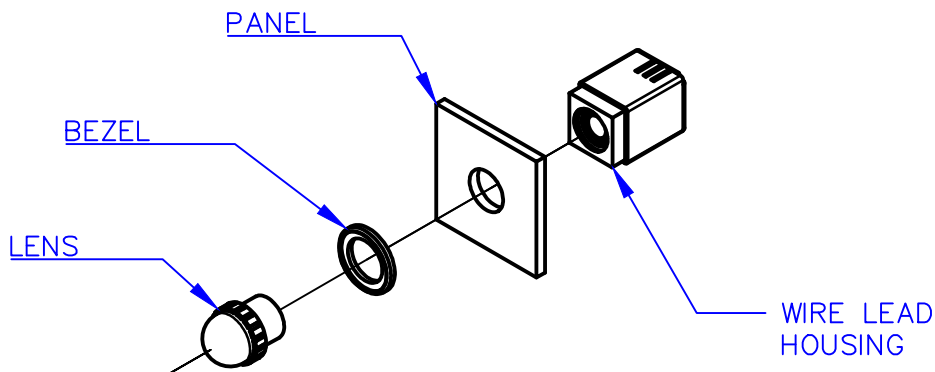
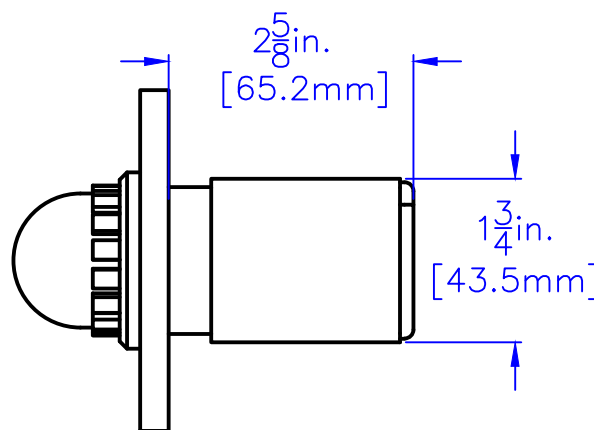


FIG #1
 MOUNTING HOLE PATTERN



MOUNTING HOLE PATTERNS		
DIMENSION	SCREW TERMINAL	WIRE LEAD
A	1 - $\frac{5}{16}$ "	$\frac{7}{8}$ "
B	1"	$\frac{7}{8}$ "
C	$\frac{5}{8}$ " OR $\frac{1}{2}$ "	$\frac{5}{8}$ " OR $\frac{1}{2}$ "



Important Notes:

ENVIRONMENTAL RATINGS

- Suitable for use on flat surfaces of Type 1, 3, 3R, 4, 4X, 12, & 13 Enclosures

TEMPERATURE RANGE

- Operating Temperature: -40 to +55°C (-40 to +131°F).
- Storage Temperature: -40 to +85°C (-40 to +185°F).

TERMINAL CAPACITY

- M3.5 x 0.6 Steel, plated terminal screws with self lifting captive wire clamps.
- Recommended wire size: 0.5 mm² ~ 4.0 mm² (#22 ~ #12 AWG) (Copper wire only- Solid & Stranded).
- One or two wires permitted per termination.
- Recommended terminal tightening torque 0.8-1.1 Nm (7-10 lb-in)

⚠ WARNING

- Disconnect power before proceeding with any work on this equipment.
- Installation and maintenance by technical personnel only.
- Installation of c3controls product must be in accordance with the NEC (U.S. National Electrical Code) regulations or local codes/standards per your application. Any violation of these safety requirements could result in a personal injury and/or result in damage to the equipment.

⚠ AVERTISSEMENT

- Débranchez le Pouvoir (la Puissance) avant la suite de n'importe quel travail sur cet équipement.
- Installation et maintien par personnel technique seulement.
- L'installation de produit c3controls doit être conformément au NEC (le Code Électrique national américain) des règlements ou des codes/normes locaux par votre demande. N'importe quelle violation de ces exigences de sécurité pourrait aboutir à une blessure personnelle et/ou aboutir aux dégâts à l'équipement.

Product dimensional drawings may be downloaded from our website, www.c3controls.com.