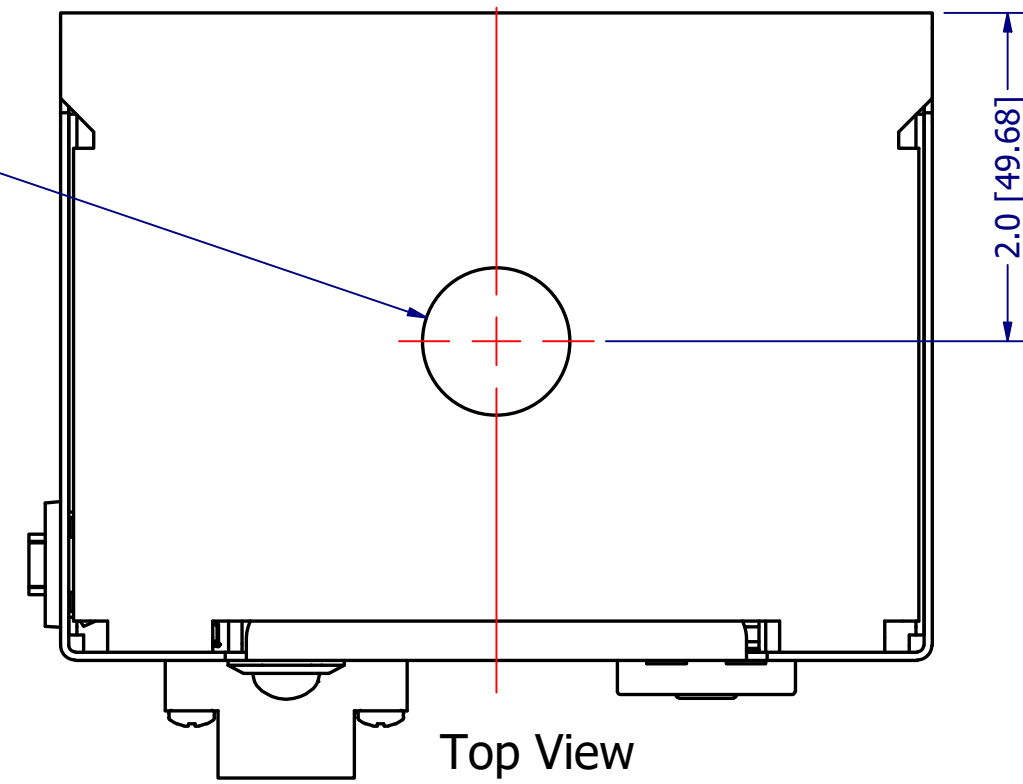
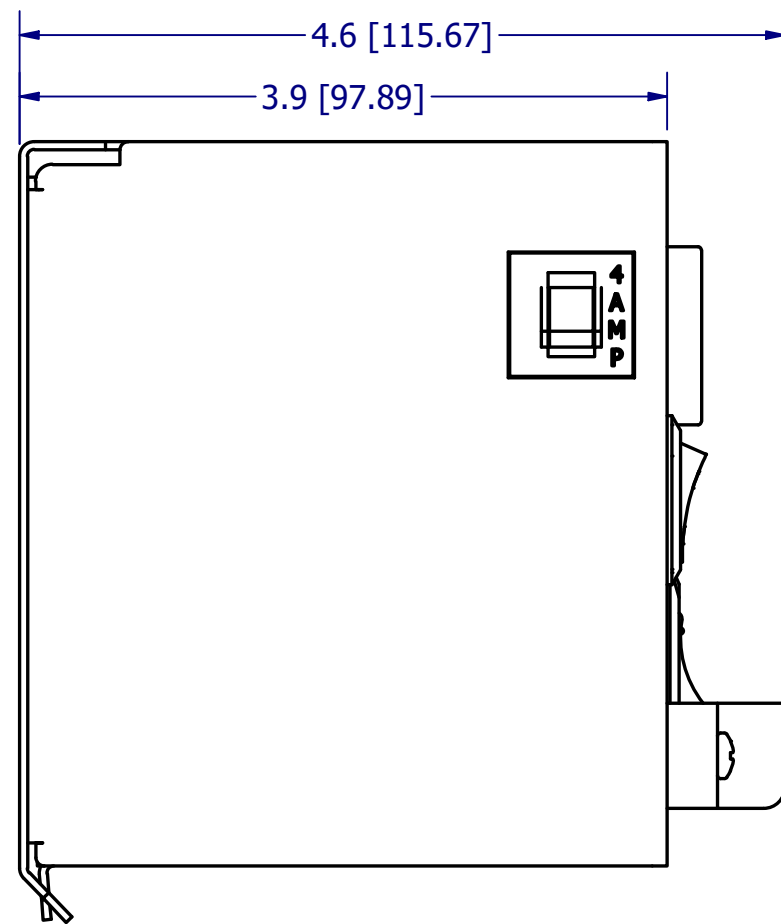


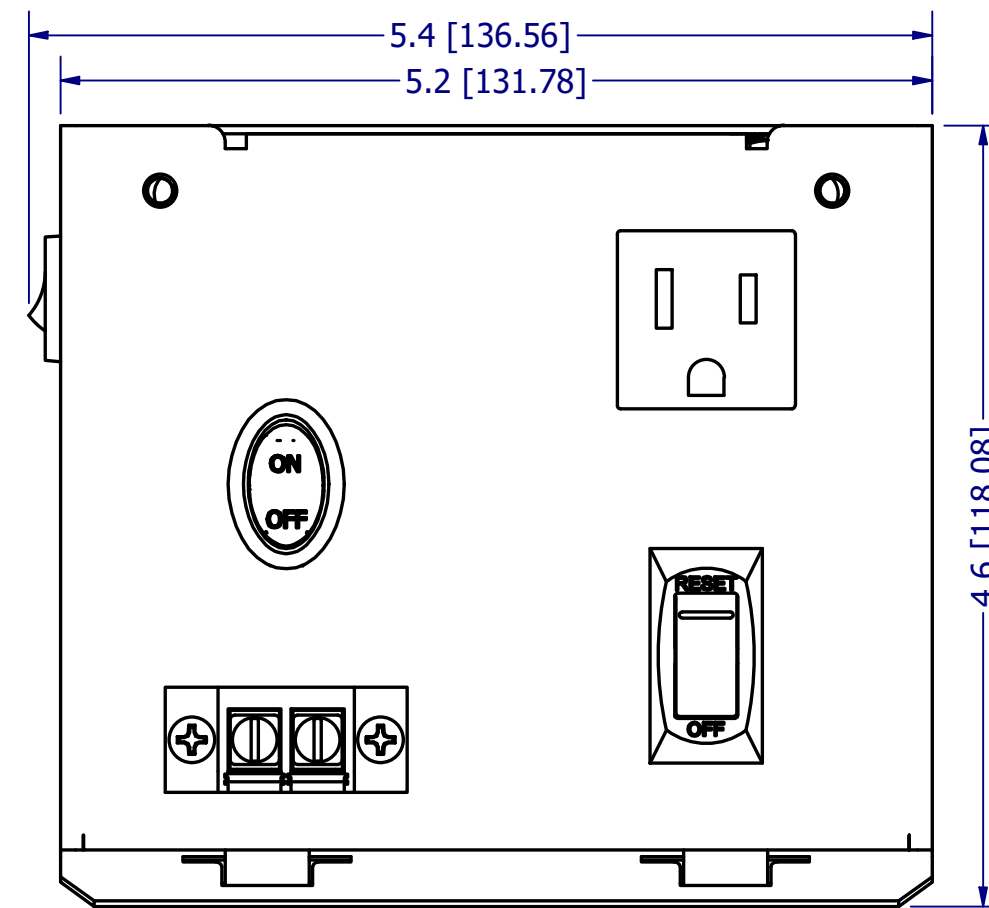
Ø.875 [Ø22.23]



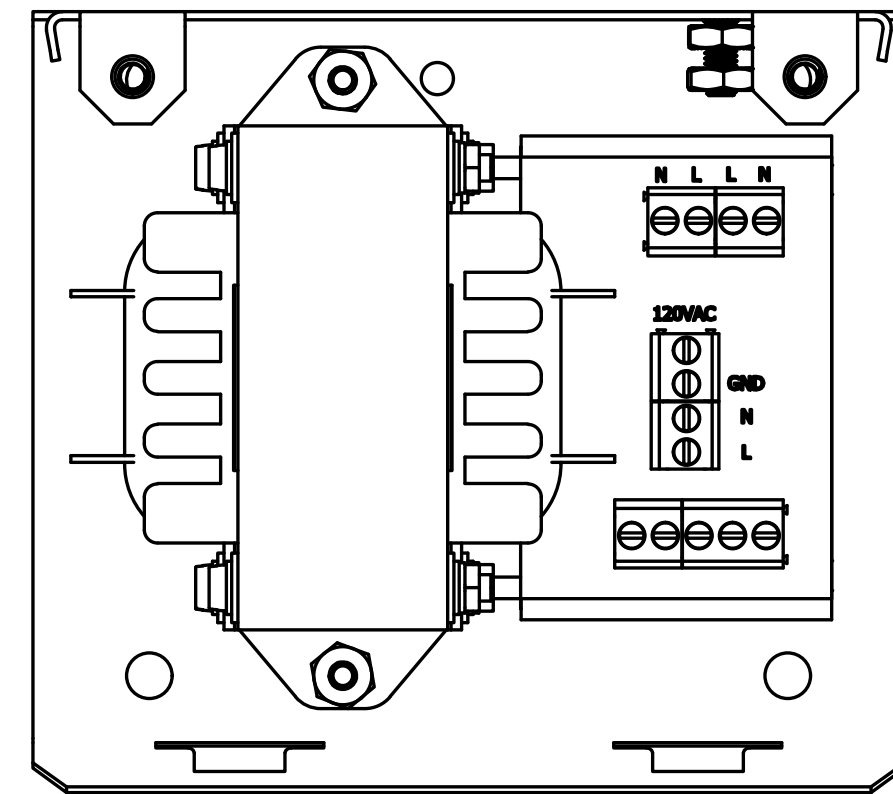
Top View
SCALE 7/8



Side View
SCALE 7/8

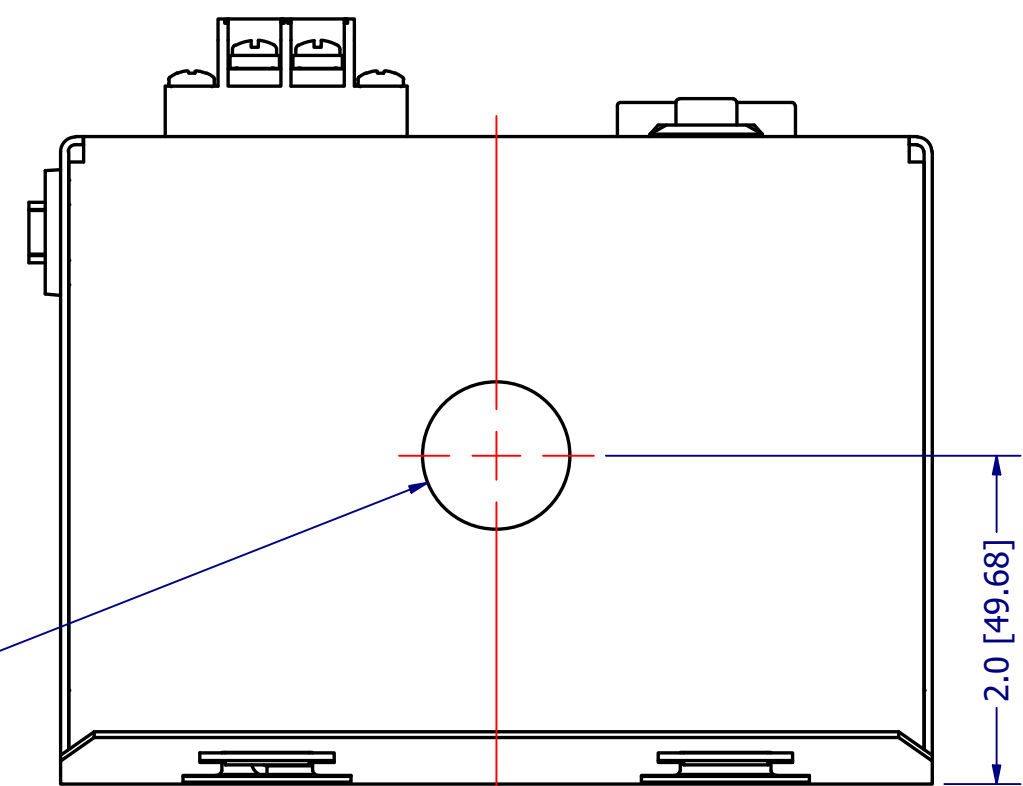


Front View
SCALE 7/8




Front View (Cover Off)
SCALE 7/8

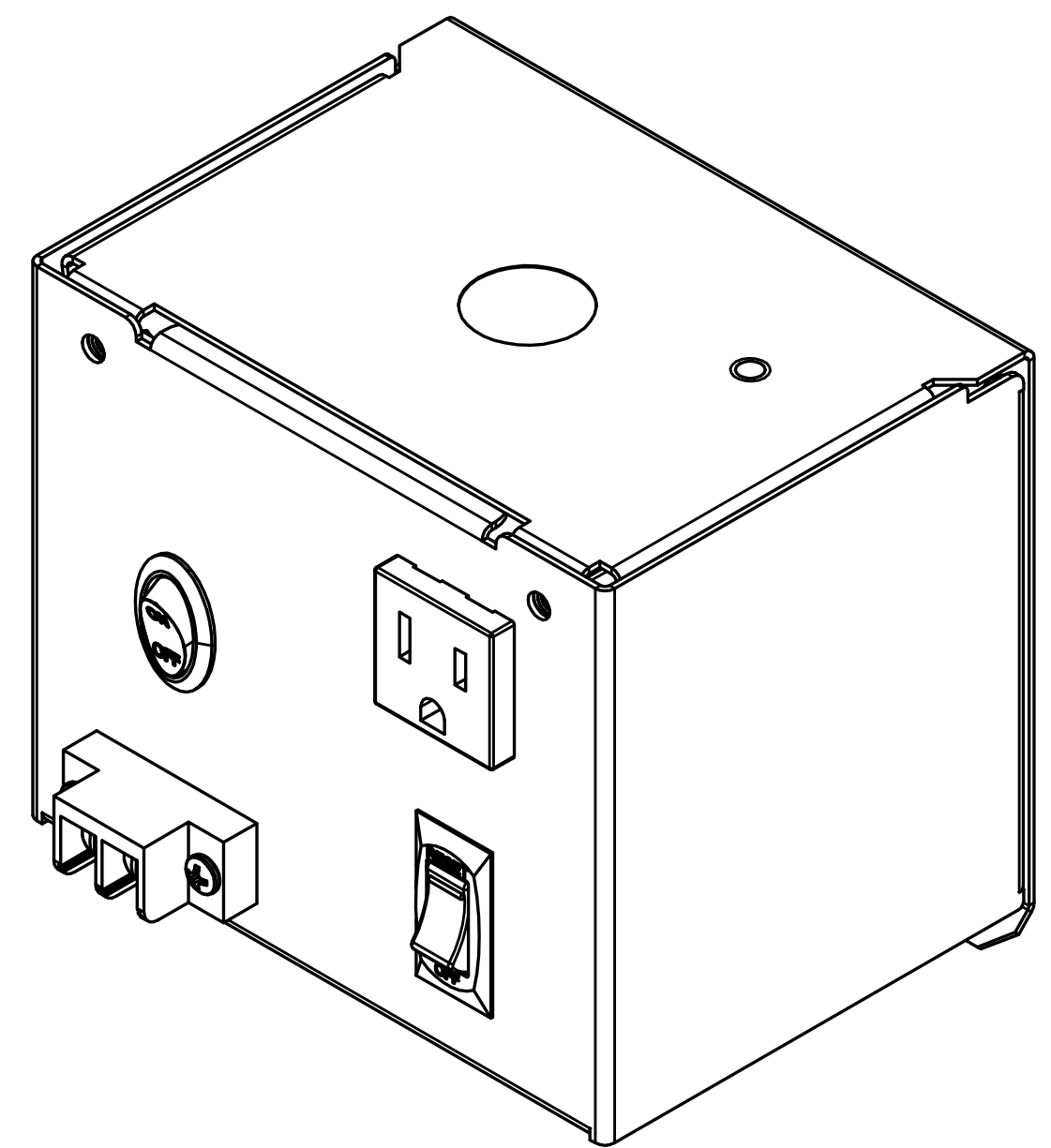
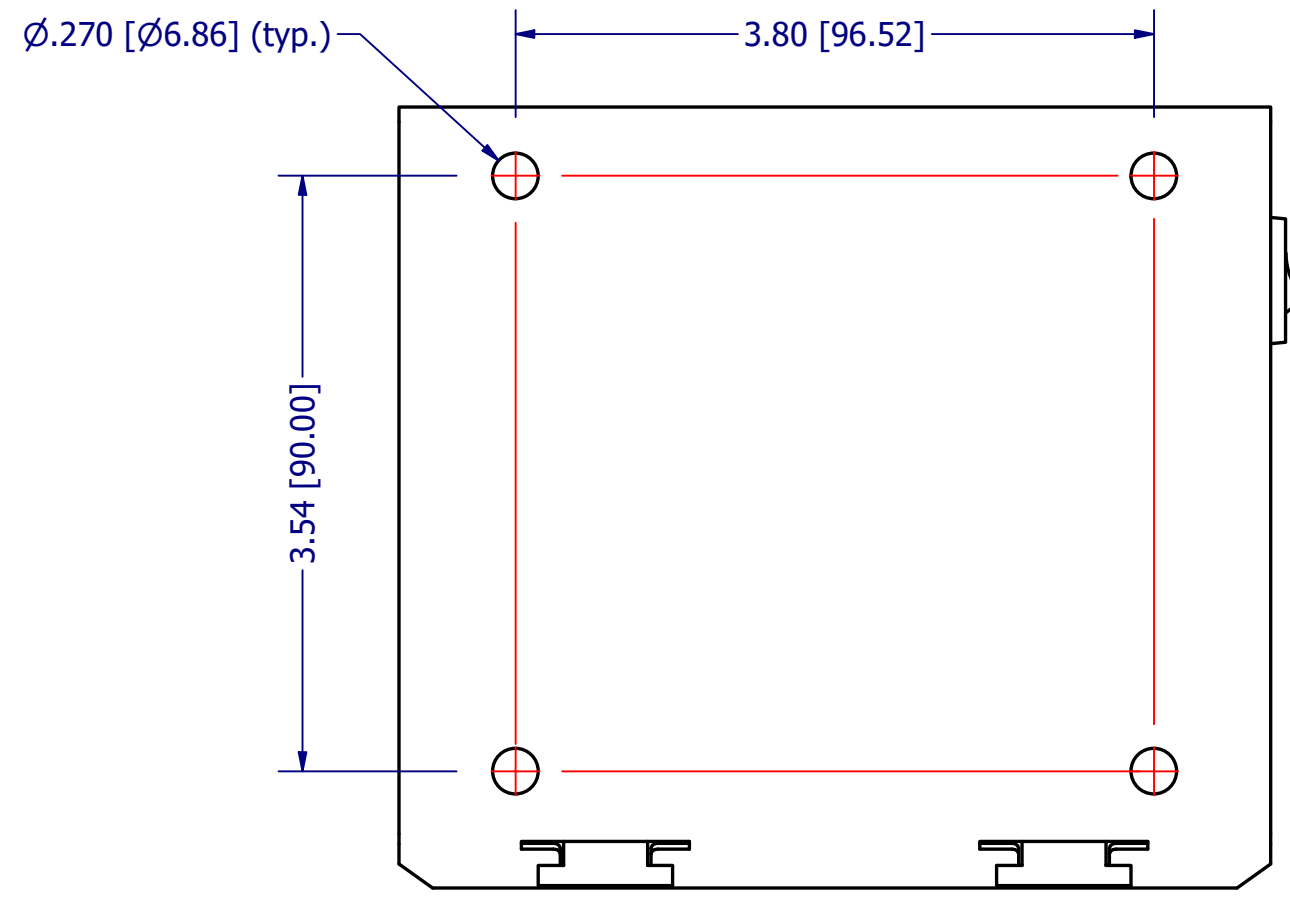
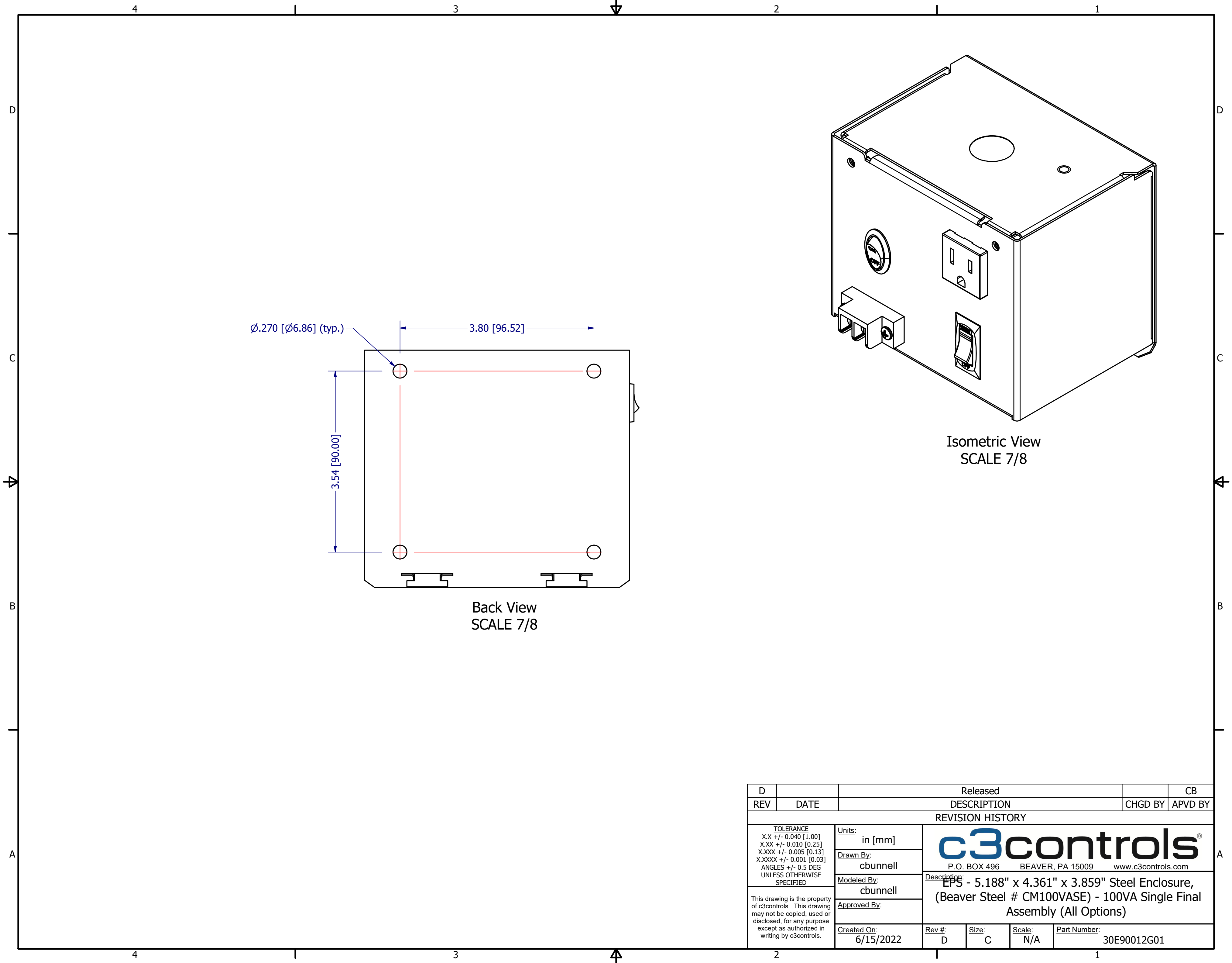
Ø.875 [Ø22.23]



Bottom View
SCALE 7/8

REV	DATE	DESCRIPTION	CHGD BY	APVD BY
D		Released		CB
REVISION HISTORY				
TOLERANCE X.X +/- 0.040 [1.00] X.XX +/- 0.010 [0.25] X.XXX +/- 0.005 [0.13] X.XXXX +/- 0.001 [0.03] ANGLES +/- 0.5 DEG UNLESS OTHERWISE SPECIFIED		Units: in [mm] Drawn By: cbunnell Modeled By: cbunnell Approved By: Created On: 6/15/2022	 P.O. BOX 496 BEAVER, PA 15009 www.c3controls.com Description: EPS - 5.188" x 4.361" x 3.859" Steel Enclosure, (Beaver Steel # CM100VASE) - 100VA Single Final Assembly (All Options)	
		Rev #:	Size:	Scale:
		D	C	N/A
		Part Number:	30E90012G01	

This drawing is the property of c3controls. This drawing may not be copied, used or disclosed, for any purpose except as authorized in writing by c3controls.



Back View
SCALE 7/8

Isometric View
SCALE 7/8

REV	DATE	DESCRIPTION	CHGD BY	APVD BY
D		Released		CB
REVISION HISTORY				
TOLERANCE X.X +/- 0.040 [1.00] X.XX +/- 0.010 [0.25] X.XXX +/- 0.005 [0.13] X.XXXX +/- 0.001 [0.03] ANGLES +/- 0.5 DEG UNLESS OTHERWISE SPECIFIED		Units: in [mm] Drawn By: cbunnell Modeled By: cbunnell Approved By:	 P.O. BOX 496 BEAVER, PA 15009 www.c3controls.com EPS - 5.188" x 4.361" x 3.859" Steel Enclosure, (Beaver Steel # CM100VASE) - 100VA Single Final Assembly (All Options)	
This drawing is the property of c3controls. This drawing may not be copied, used or disclosed, for any purpose except as authorized in writing by c3controls.		Created On: 6/15/2022 Rev #: D Size: C Scale: N/A Part Number: 30E90012G01		