

# NON-FUSED DISCONNECT SWITCHES



c3controls offers the most rugged, dependable Disconnect Switches that money can buy. From Panel/Base Mount to Door Mount with switch ratings from 16A - 125A, we've got what you need. And, of course, they're all certified to UL and CSA standards and CE marked for global versatility.



Non-Fused Disconnect Switches  
Accessories  
Specifications  
Dimensions

## Section 1

4  
7  
8  
10

## PROVEN



### Conformity to Standards:

UL 508  
CSA C22.2 No. 14  
IEC 60947-1, 60947-3

### Certifications:

UL File #: E187641 (Guide NLRV, NLRV2, NLRV7, NLRV8)


CE Marked (per EU Low Voltage Directive 2006/95/EC and  
RoHS Directive 2011/65/EU)

Visit [www.c3controls.com](http://www.c3controls.com) to download product certifications.

# NON-FUSED DISCONNECT SWITCHES

c3controls offers a comprehensive line of Disconnect Switches, just one of our extensive product lines designed and manufactured to meet the needs of the machine builder. Check out all the features of our Series DS below!

## DEPENDABLE, HIGH QUALITY DISCONNECT SWITCHES—ONLY AT C3CONTROLS.

✓ <b>Proven</b>	Our Disconnect Switches are certified to UL Standards and CE marked for global versatility.	
✓ <b>Multiple Installations</b>	Installations for disconnect switches are available for both door mount and panel/base mount.	
✓ <b>Easy to Install</b>	Panel/Base mount switches snap-on to 35mm DIN Rail or secure to the panel with two fixing screws, and feature dual terminal markings (1/L1, 3/L2, 5/L3 and 2/T1, 4/T2, 6/T3) for fast and easy wiring.	
✓ <b>Simple Wiring</b>	Integral captive terminal clamps are shipped in the backed-out position for easy wiring and are plated for corrosion resistance.	
✓ <b>Convenient</b>	Switches are factory assembled with operating handles for Just-In-Time (JIT) manufacturing and reduced inventory.	
✓ <b>Circuit Isolation</b>	Disconnect switches include positive drive to open double break contacts to ensure circuit isolation, and feature a 10kA short circuit rating at 600V AC with Class J fuses.	
✓ <b>Heavy-Duty</b>	Glass filled polyamide thermoplastic housings are ARC track resistant and provide insulation between poles.	
✓ <b>Customization</b>	Positive, reliable actuation of the switch is ensured through the rigid operating shaft that can be cut to length to fit your enclosure depths.	
✓ <b>Wide Range of Operation</b>	Wide variety of operating handle styles and colors with Type 1, 2, 3, 3R, 4/4X, 12 and 13, IP55, and IP65 ingress protection ratings for the most demanding industrial environments.	
✓ <b>Limited Lifetime Warranty*</b>	Every product is backed by our limited lifetime warranty—unmatched in the industry—bringing you quality components that perform in the most demanding applications.	
✓ <b>Guaranteed Same-Day Shipping*</b>	Product availability reduces inventory, and improves cash-flow—saving you money. With c3controls any order for standard catalog items received by 6:00pm ET is guaranteed to ship same-day.	
✓ <b>Advantage Pricing</b>	Our approach to product development, manufacturing, and focus on servicing the OEM and Electrical Equipment Builder reduces cost. The result—the best value in the industry.	

\*See c3controls Terms & Conditions

“With c3controls Series DS, service calls have been minimized and I’ve never had to revert to another supplier due to the fact we couldn’t get what we needed on time. I can count on c3controls.”

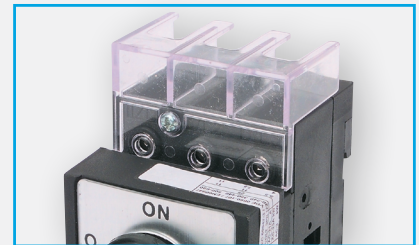
Dan Hamer, Electrical Engineer • **ESD Waste2Water**

Panel Mount Switch  
with PHG HandleDoor Mount Switch  
with DHG HandlePanel Mount Switch  
with Integral SMP HandlePanel Mount Switch  
with Integral SML Handle**UNIQUE PRODUCT LINE FEATURES****PADLOCKABLE SWITCHES**

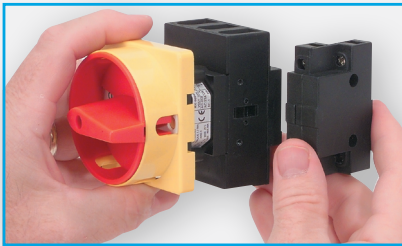
Operating handles with ON/OFF and international I/O symbols, can be padlocked in the "OFF" position with up to three padlocks for extra safety and the security needed during maintenance activities.

**MANUAL MOTOR CONTROLLER**

Certified as Manual Motor Controllers Suitable as Motor Disconnects for motors up to 40HP at 480V (55kW at 400V).

**ADVANCED SAFETY**

Switches include IP20 terminals and a line-side terminal shield is provided as standard on the disconnect switches to guard against accidental contact with live parts.

**FLEXIBILITY**

The modular switch design allows up to two modules to be added to a three pole switch, with one module installed on the left side and the other installed on the right.

**ADDED SECURITY**

Our door interlock allows entry into the enclosure only when the switch is in the OFF position, while our pistol operating handles include a concealed "defeater mechanism" that must be operated with a tool and allows entry when the switch is in the ON position.

# FIND IT FAST

Non-Fused Disconnect Switches



- Certifications
- Specifications
- Dimension Drawings
- Installation Instructions
- Easy to Buy

[www.c3controls.com](http://www.c3controls.com)

## IT'S EASY TO BUILD YOUR OWN DISCONNECT SWITCH

Simply pick the code number from each of the sections below and combine them to build your part number.

### Series DS2 Disconnect Switches (Non-Fused)

**DS2** - **I** **II** **III** **IV** - **V** **VI** **VII**

Example: To build one of our most popular Disconnect Switches, the part number would be **I + DS2 + III + IV + V + VI + VII** or **DDS2-325-DHGRY**



#### I. INSTALLATION

CODE	DESCRIPTION	LIST
D	Door Mount	\$34.00
P	Panel/Base Mount	\$38.00

#### II. OPERATOR TYPE

CODE	DESCRIPTION
DS2	Non-Fused Disconnect Switch

#### III. NUMBER OF POWER POLES

CODE	DESCRIPTION	LIST
3	3 Poles	*
4	4 Poles	*
5	5 Poles	*

\*NOTE: Price included with Current Rating. See Chart IV below.

#### IV. CURRENT RATING

CODE	DESCRIPTION	FOR USE WITH		
		3 POLES	4 POLES	5 POLES
16	16 Amp	\$ 0.00	\$ 14.00	\$ 28.00
25	25 Amp	\$ 4.00	\$ 18.00	\$ 32.00
30	32 Amp	\$ 11.00	\$ 27.00	\$ 43.00
40	40 Amp	\$ 23.00	\$ 50.00	\$ 78.00
60	63 Amp	\$ 33.00	\$ 63.00	\$ 94.00
80	80 Amp	\$ 67.00	\$135.00	\$185.00
100	100 Amp	\$ 95.00	\$146.00	\$198.00
125	125 Amp	\$117.00	\$171.00	\$225.00

#### V. OPERATING HANDLE TYPE

CODE	DESCRIPTION	FOR CURRENT RATING CODES	LIST
<b>DOOR MOUNT HANDLES FOR DOOR MOUNT SWITCHES</b>			
MDHG	Padlockable Lever (IP55)	16	\$ 13.00
MSDHG	Padlockable Lever - Single Hole (22.5mm) Mounting (IP55)	16	\$ 13.00
DHM	Round (Type 1, 2, 3, 3R, 4/4X, 12, 13, and IP65)	25 ~ 60	\$ 43.00
DHG	Round (Type 1, 2, 3, 3R, 4/4X, 12, 13, and IP65)	25 ~ 125	\$ 15.00
<b>DOOR MOUNT HANDLES FOR PANEL/BASE MOUNT SWITCHES</b>			
MPHG	Padlockable Lever (IP65)	16	\$ 13.00
PHM	Round (Type 1, 2, 3, 3R, 4/4X, 12, 13, and IP65)	25 ~ 125	\$ 43.00
PHG	Round (Type 1, 2, 3, 3R, 4/4X, 12, 13, and IP65)	25 ~ 125	\$ 15.00
SPH	Short Pistol (IP65)	25 ~ 125	\$ 56.00
LPH	Long Pistol (IP65)	80 ~ 125	\$ 70.00
<b>INTEGRAL HANDLES FOR PANEL/BASE MOUNT SWITCHES</b>			
SML	Lever (IP30)	25 ~ 60	\$ 11.50
SMP	Padlockable Lever (IP30)	25 ~ 60	\$ 13.00

#### VI. OPERATING HANDLE COLOR

CODE	OPERATOR COLOR	BEZEL COLOR	FOR OPERATOR TYPE CODE
RY	Red	Yellow	DHM, DHG, PHM, PHG, MDHG, MSDHG, MPHG, SMP
GB	Grey	Black	DHM, PHM
BB	Black	Black	DHM, PHM
BG	Black	Grey	DHM, DHG, PHM, PHG, MDHG, MSDHG, MPHG
BA	Black	Aluminum	SML
BN	Black	—	SPH, LPH

#### VII. OPERATING SHAFT LENGTH

CODE	DESCRIPTION	FOR CURRENT RATING CODES	LIST
(Blank)	Door Mount and Panel/Base Mount Switch with Integral Operating Handle	—	—
06	150mm (5-57/64") Operating Shaft for Panel/Base Mount Switch	16	\$ 6.30
11	283mm (11") Operating Shaft for Panel/Base Mount Switch	25 ~ 125	\$ 8.10

DISCOUNT  
SCHEDULE **G**



PANEL MOUNT  
DISCONNECT  
SWITCH WITH  
PHG HANDLE



DOOR MOUNT  
DISCONNECT  
SWITCH WITH  
DHG HANDLE



PANEL MOUNT  
DISCONNECT SWITCH  
WITH INTEGRAL  
SMP HANDLE



PANEL MOUNT  
DISCONNECT SWITCH  
WITH INTEGRAL  
SML HANDLE



## SERIES DS2 NON-FUSED DISCONNECT SWITCHES

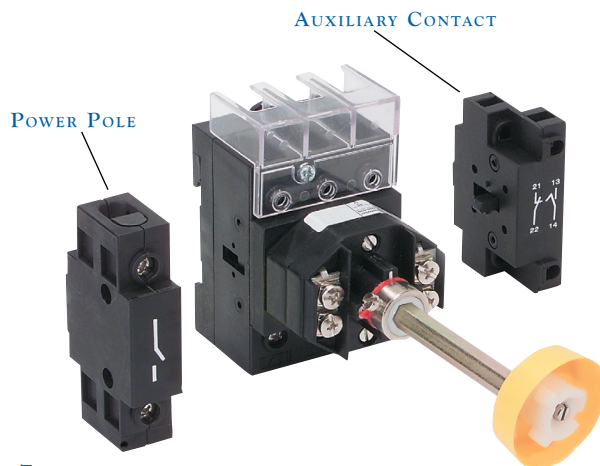
Our Series DS2 Non-Fused Disconnect Switches provide superior performance in rugged applications and are certified as Manual Motor Controllers Suitable as Motor Disconnects for motors up to 40HP at 480V (55kW at 400V). Panel/Base and door mounting options allow switches to be installed in virtually any enclosure.

Panel/Base mount switches are simple to install:

- Snap-on to a 35mm DIN rail.
- Secure to the panel with two (2) fixing screws.
- Dual terminal markings (1/L1, 3/L2, 5/L3 and 2/T1, 4/T2, 6/T3) for fast and easy wiring.

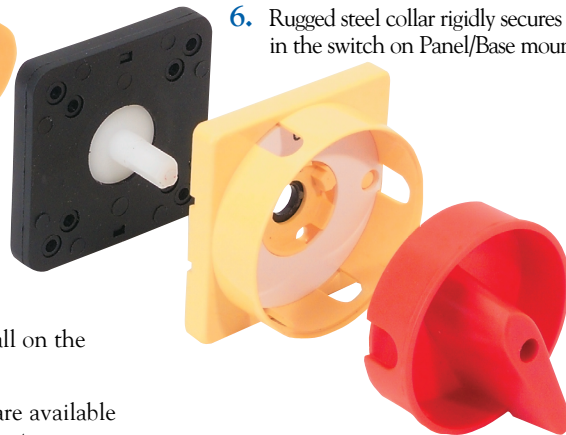


### COMPACT SIZE WITH ROBUST DESIGN FEATURES FOR THE MOST DEMANDING DISCONNECTING APPLICATIONS.



1. 10kA short circuit rating at 600V AC with Class J fuses.
2. Positive drive to open double break contacts to ensure circuit isolation.
3. Compact space saving design for reduced size control panels. 16A switch is only 43mm (1-11/16") wide and our 25A ~ 63A switches are only 50mm (1-31/32") wide.
4. Wide variety of operating handle styles and colors with Type 1, 2, 3, 3R, 4/4X, 12 and 13, IP55, and IP65 ingress protection ratings for the most demanding industrial environments.
5. Glass filled polyamide thermoplastic housings are ARC track resistant and provide insulation between poles.
6. Rugged steel collar rigidly secures the operating shaft in the switch on Panel/Base mounted switches.

7. Line side terminal shield (provided as standard) and IP20 terminals guard against accidental contact with live parts.
8. Integral captive terminal clamps are shipped in the backed-out position for easy wiring and are plated for corrosion resistance.
9. Auxiliary contacts, power poles, and neutral poles install on the left or right side of the switch.
10. Complete assembled switches with operating handles are available for Just-In-Time (JIT) manufacturing and reduced inventory.



### SOME OF OUR POPULAR CONFIGURATIONS:

SERIES DS2 NON-FUSED DISCONNECT SWITCHES		
CATALOG NUMBER	DESCRIPTION	LIST
DDS2-316-MDHGRY	16A Door Mount Disconnect Switch w/3 Poles and Lever Red/Yellow Handle	\$47.00
DDS2-325-DHGRY	25A Door Mount Disconnect Switch w/3 Poles and Round Red/Yellow Handle	\$53.00
DDS2-330-DHGRY	32A Door Mount Disconnect Switch w/3 Poles and Round Red/Yellow Handle	\$60.00
DDS2-340-DHGRY	40A Door Mount Disconnect Switch w/3 Poles and Round Red/Yellow Handle	\$72.00
PDS2-316-MPHGRY06	16A Panel Mount Disconnect Switch w/3 Poles and Lever Red/Yellow Handle	\$57.30
PDS2-325-PHGRY11	25A Panel Mount Disconnect Switch w/3 Poles and Round Red/Yellow Handle	\$65.10
PDS2-330-PHGRY11	32A Panel Mount Disconnect Switch w/3 Poles and Round Red/Yellow Handle	\$72.10
PDS2-340-PHGRY11	40A Panel Mount Disconnect Switch w/3 Poles and Round Red/Yellow Handle	\$84.10
PDS2-325-SMLBA	25A Panel Mount Disconnect Switch w/3 Poles and Integral Black/Aluminum Lever Handle	\$53.50
PDS2-325-SMPRY	25A Panel Mount Disconnect Switch w/3 Poles and Integral Red/Yellow Padlockable Lever Handle	\$55.00
PDS2-330-SMLBA	32A Panel Mount Disconnect Switch w/3 Poles and Integral Black/Aluminum Lever Handle	\$60.50

## SERIES DS2 NON-FUSED OPERATING HANDLES

c3controls Series DS2 non-fused disconnect switch operating handles are available in a wide variety of styles, colors, and ingress protection ratings — perfect for any application from light duty to severe industrial environments. External operating handles are easy to install in standard 4-hole panel drilling layouts. A single hole (22.5mm) operating handle is also available for 16A switches. Operating handles can be installed in enclosures with door thicknesses up to 6mm (5/64") depending on handle type, see pages 10-14.



### UNIQUE PRODUCT FEATURES



**EASY TO INSTALL, STYLISH OPERATING HANDLES PROVIDE RELIABLE ACTUATION IN DISCONNECTING APPLICATIONS AND CAN BE LOCKED OFF FOR EXTRA SAFETY.**

1. Handles can be padlocked OFF with up to three padlocks to meet global installation codes and standards requirements.
2. Operating handles with ON/OFF and I/O markings.
3. Door interlock — can only be opened in the OFF position.
4. Positive, reliable actuation of the switch is ensured through the rigid operating shaft that can be cut to length for enclosure depths up to 204mm (8") for 16A switches and up to 355mm (13-63/64") for 25A ~ 63A switches and 456.5mm (17-63/64") for 80A ~ 125A switches.
5. Pistol operating handles include a concealed "defeater mechanism" that must be operated with a tool. Allows entry into the enclosure with the switch in the ON position.



**DHG/PHG**  
**DOOR/PANEL MOUNT**  
**ROUND OPERATING HANDLE**  
(Type 1, 2, 3, 3R, 4/4X, 12, 13, and IP65)



**DHM/PHM DOOR/PANEL MOUNT**  
**OPERATING HANDLE**  
(Type 1, 2, 3, 3R, 4/4X, 12, 13, and IP65)



**SMP PANEL MOUNT INTEGRAL**  
**PADLOCKABLE LEVER**  
**OPERATING HANDLE**  
(IP30)



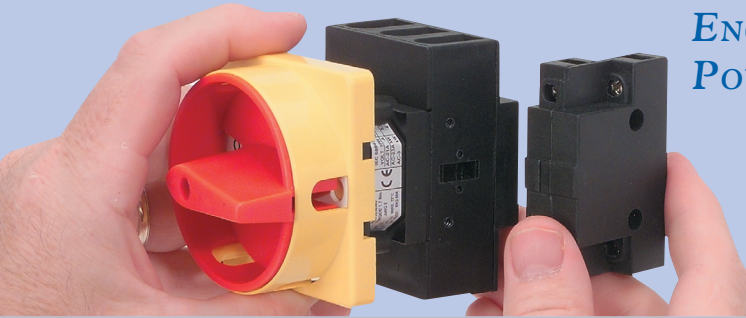
**SPH/LPH PANEL MOUNT**  
**PISTOL OPERATING HANDLE**  
(IP65)



**SML PANEL MOUNT INTEGRAL**  
**LEVER OPERATING HANDLE**  
(IP30)



**MDHG/MSDHG/MPHG**  
**DOOR/PANEL MOUNT LEVER**  
**OPERATING HANDLE**  
(MDHG & MSDHG: IP55) (MPHG: IP65)

**SPECIAL FEATURES****ENGINEERED TO ADD AUXILIARY CONTACTS, POWER POLES, AND NEUTRAL POLES EASILY!**

Up to two modules (Auxiliary Contacts, Power Poles, and Neutral Poles) can be added to a three pole switch. One module can be installed on the left side and right side of the switch.

**NEUTRAL POLE MODULES**

Normally open early make (NOEM) configuration. IP20 terminals guard against accidental contact with live parts.

DOOR MOUNT		
CODE	CURRENT RATING CODE	LIST
DNA216	16	\$17.00
DNA225	25	\$17.00
DNA230	30	\$19.50
DNA240	40	\$21.00
DNA260	60	\$23.00
DNA280	80	\$27.00
DNA2100	100	\$28.00
DNA2125	125	\$29.00

PANEL MOUNT		
CODE	CURRENT RATING CODE	LIST
PDNA216	16	\$17.00
PDNA225	25	\$17.00
PDNA230	30	\$19.50
PDNA240	40	\$21.00
PDNA260	60	\$23.00
PDNA280	80	\$27.00
PDNA2100	100	\$28.00
PDNA2125	125	\$29.00

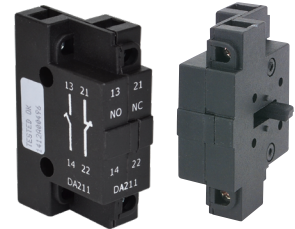
**POWER POLE MODULES**

Normally open (NO) configuration. IP20 terminals guard against accidental contact with live parts. Electrical ratings are equivalent to the associated switch rating (refer to specifications on page 8).

DOOR MOUNT		
CODE	CURRENT RATING CODE	LIST
DPA216	16	\$17.00
DPA225	25	\$17.00
DPA230	30	\$19.50
DPA240	40	\$21.00
DPA260	60	\$23.00
DPA280	80	\$27.00
DPA2100	100	\$28.00
DPA2125	125	\$29.00

PANEL MOUNT		
CODE	CURRENT RATING CODE	LIST
PDPA216	16	\$17.00
PDPA225	25	\$17.00
PDPA230	30	\$19.50
PDPA240	40	\$21.00
PDPA260	60	\$23.00
PDPA280	80	\$27.00
PDPA2100	100	\$28.00
PDPA2125	125	\$29.00

**AUXILIARY CONTACT MODULES**

1 normally open early make (NOEM) and 1 normally closed (NC) contact configuration. IP20 terminals guard against accidental contact with live parts. Auxiliary contacts can be installed on switches rated 16A to 125A, reducing inventory requirements.

Ratings: AC-15: 6A at  $\leq 240V$  AC  
4A at 240V AC to 480V AC  
Continuous Thermal Current: 15A

DOOR MOUNT		
CODE	CURRENT RATING CODE	LIST
D16A211	16	\$27.00
DA211	25 ~ 60	\$27.00
D125A211	80 ~ 125	\$27.00

PANEL MOUNT		
CODE	CURRENT RATING CODE	LIST
PA16DA211	16	\$27.00
PADA211	25 ~ 60	\$27.00
PA125DA211	80 ~ 125	\$27.00

**TERMINAL SHIELDS**

Terminal shields can be installed on the line or load side of the disconnect switch to provide extra protection and guard against accidental contact with live parts.

CODE	CURRENT RATING CODE	LIST
DS2TS20	16	\$ 5.00
DS2TS60	25 ~ 60	\$ 5.00
DS2TS125	80 ~ 125	\$10.00

DISCOUNT  
SCHEDULE **6**

## SPECIFICATIONS:

### SERIES DS2 NON-FUSED DISCONNECT SWITCH SPECIFICATIONS

		SWITCH CURRENT RATING CODE							
		16	25	30	40	60	80	100	125
<b>ELECTRICAL UL/CSA APPLICATIONS</b>									
	<b>UNITS</b>								
Rated Operating Voltage, Ue	VAC	600							
Rated Operating Current, Ie	A	16	25	32	40	63	80	100	125
<b>RATED 3-PHASE POWER, Pe</b>									
@ 240V AC	HP	3	7.5	7.5	10	15	20	20	30
@ 480V AC	HP	7.5	15	20	20	25	30	30	40
@ 600V AC	HP	10	20	25	30	30	40	40	50
<b>RATED SINGLE PHASE POWER, Pe</b>									
@ 120V AC	HP	0.5	1.5	2	3	3	3	3	3
@ 240V AC	HP	1.5	2	3	5	7.5	7.5	7.5	7.5
<b>SHORT CIRCUIT RATINGS @ 600V AC</b>									
With Class J Fuses	kA	10	10	10	10	10	10	10	10
Maximum Fuse Size	A	20	45	45	70	70	125	125	125
<b>ELECTRICAL IEC APPLICATIONS</b>									
Rated Insulation Voltage, Ui	VAC	750							
Rated Impulse Voltage, Uimp	kV	6							
Rated Operating Voltage, Ue	VAC	690							
<b>RATED OPERATING CURRENT, Ie</b>									
AC-22A	A	16	25	32	40	63	80	100	125
AC-1	A	20	32	40	63	80	80	100	125
<b>RATED 3-PHASE POWER, AC-23A, Pe</b>									
@ 220 ~ 240V AC	kW	7.5	11	15	22	30	37	44	60
@ 380 ~ 440V AC	kW	15	22	22	45	45	90	90	90
@ 500 ~ 690V AC	kW	15	22	22	45	45	90	90	90
<b>RATED 3-PHASE POWER, AC-3, Pe</b>									
@ 220 ~ 240V AC	kW	4	8	11	15	22	30	37	44
@ 380 ~ 440V AC	kW	5.5	15	15	30	30	55	55	55
@ 500 ~ 690V AC	kW	11	15	15	30	30	55	55	55
<b>SHORT CIRCUIT RATINGS</b>									
With Type gG Fuses	kA	5	30	30	30	30	30	30	30
Maximum Fuse Size	A	20	32	32	63	63	125	125	125
<b>MECHANICAL</b>									
Operating Torque (Door Mount)	Nm	0.45	0.8	0.8	0.8	0.8	①	①	①
	Lb-in.	4.0	7	7	7	7	①	①	①
Operating Torque (Panel Mount)	Nm	0.45	1.0	1.0	1.0	1.0	1.6	1.6	1.6
	Lb-in.	4.0	9	9	9	9	14	14	14
<b>ENVIRONMENTAL</b>									
Ambient Operating Temperature	°C/°F	-25 to 55 / -13 to 131							
Altitude	m/ft.	2,000/6,528							
<b>Ingress Protection</b>									
Switch Body	IP	20							
Operating Handles	—	For detailed specifications by operating handle, see page 9.							
<b>CONSTRUCTION</b>									
<b>CONDUCTOR SIZE</b>									
UL/CSA	AWG	1 x 18 ~ 12, 2 x 18 ~ 12	1 x 18 ~ 10, 2 x 18 ~ 12		1 x 12 ~ 6, 2 x 12 ~ 8		1 x 10 ~ 1, 2 x 10 ~ 4		
Solid/Multi-strand	mm²	1 ~ 4	2.5 ~ 10	2.5 ~ 10	6 ~ 25	6 ~ 25	2.5 ~ 50	2.5 ~ 50	2.5 ~ 50
Fine strand with sleeve	mm²	0.5 ~ 6	0.75 ~ 6	0.75 ~ 6	2.5 ~ 10	2.5 ~ 10	4 ~ 50	4 ~ 50	4 ~ 50
Terminal Torque	Nm	0.8	1.7	1.7	2	2	2.5	2.5	2.5
	Lb-in.	7.1	15	15	17.7	17.7	22	22	22
Recommended Wire Strip Length	mm	10	10	12	12	12	15	15	15
	in.	3/8	3/8	1/2	1/2	1/2	5/8	5/8	5/8
<b>ROHS COMPLIANCE</b>		For RoHS compliance documentation by product, refer to <a href="http://www.c3controls.com">www.c3controls.com</a>							

① Consult factory



## SPECIFICATIONS:

## SERIES DS2 NON-FUSED DISCONNECT SWITCHES – OPERATING HANDLES

ENVIRONMENTAL	UNITS	
<b>DHG / PHG HANDLE</b>		
Handle Type		Round
Installation		Door/Panel Mount
Padlock Provision		3
Ingress Protection Rating	—	Type 1, 2, 3, 3R, 4/4X, 12, 13 and IP65
<b>DHM / PHM HANDLE</b>		
Handle Type		Round
Installation		Door/Panel Mount
Padlock Provision		3
Ingress Protection Rating	—	Type 1, 2, 3, 3R, 4/4X, 12, 13 and IP65
<b>SMP HANDLE</b>		
Handle Type		Padlockable Lever
Installation		Integral Panel Mount
Padlock Provision		1
Ingress Protection Rating	IP	30
<b>SPH / LPH HANDLE*</b>		
Handle Type		Pistol
Installation		Panel Mount
Padlock Provision		3
Ingress Protection Rating	IP	65
<b>SML HANDLE</b>		
Handle Type		Lever
Installation		Integral Panel Mount
Padlock Provision		0
Ingress Protection Rating	IP	30
<b>MDHG / MSDHG / MPHG HANDLE</b>		
Handle Type		Padlockable Lever
Installation		Door/Panel Mount
Padlock Provision		1
Ingress Protection Rating	IP	MDHG & MSDHG: 55      MPHG: 65

\*NOTE: Includes concealed defeater mechanism.



DHG/PHG



DHM/PHM



SMP



SPH/LPH

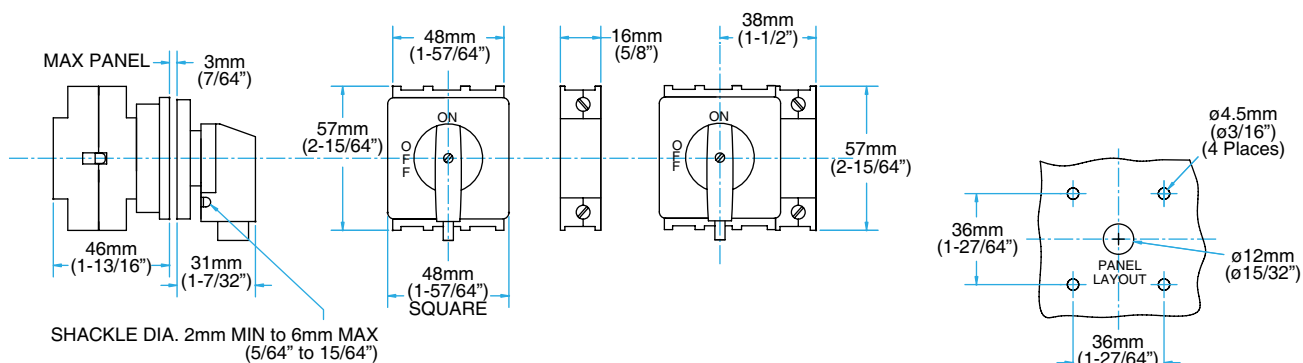


SML

MDHG/MSDHG/  
MPHG

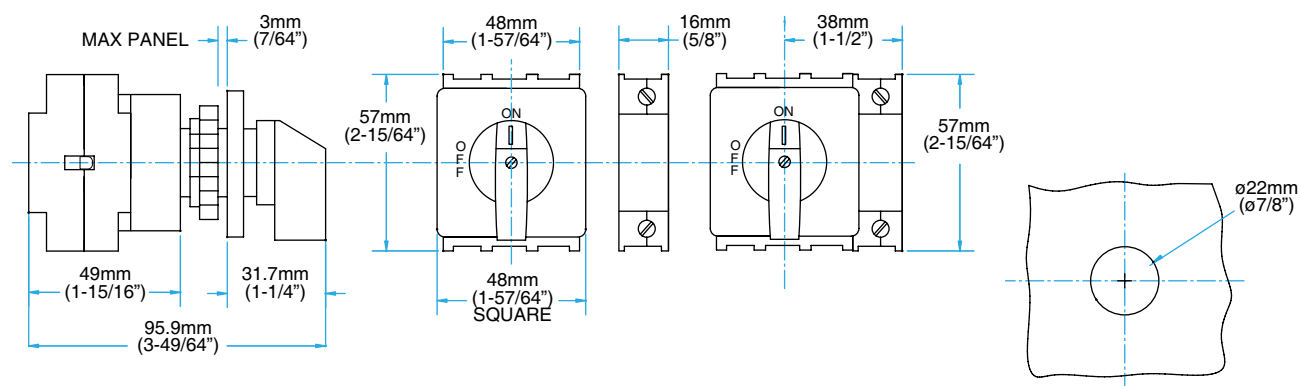
## DOOR MOUNTED DISCONNECT SWITCH WITH MDHG OPERATING HANDLE

## 16A SWITCHES



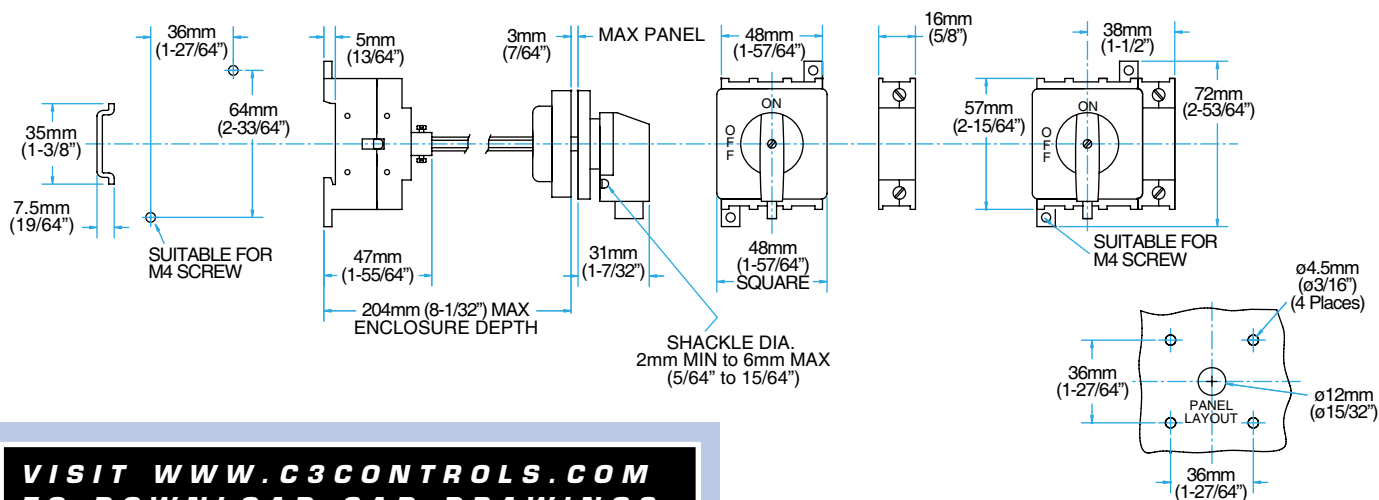
**DOOR MOUNTED DISCONNECT SWITCH WITH MSDHG OPERATING HANDLE**

## 16A SWITCHES



### **PANEL MOUNTED DISCONNECT SWITCH WITH MPHG OPERATING HANDLE**

## 16A SWITCHES

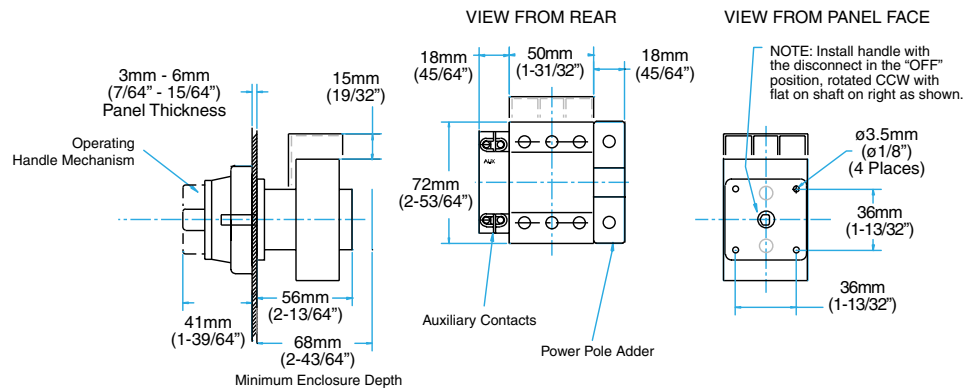


**VISIT [WWW.C3CONTROLS.COM](http://WWW.C3CONTROLS.COM)  
TO DOWNLOAD CAD DRAWINGS**

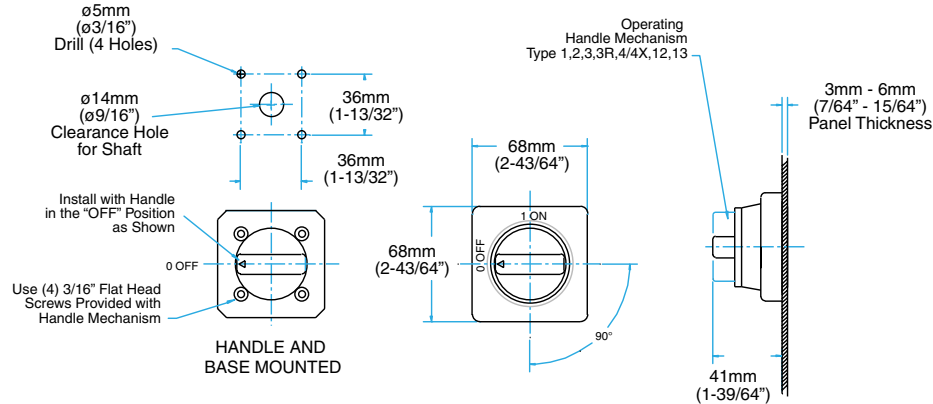


## DOOR MOUNTED DISCONNECT SWITCH WITH DHM OPERATING HANDLE

### 25A - 63A SWITCHES

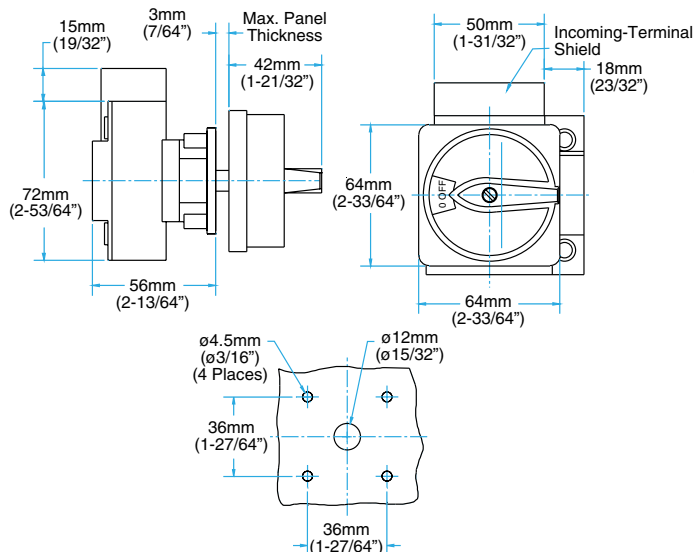


### DHM OPERATING HANDLE MOUNTING HOLE PATTERN

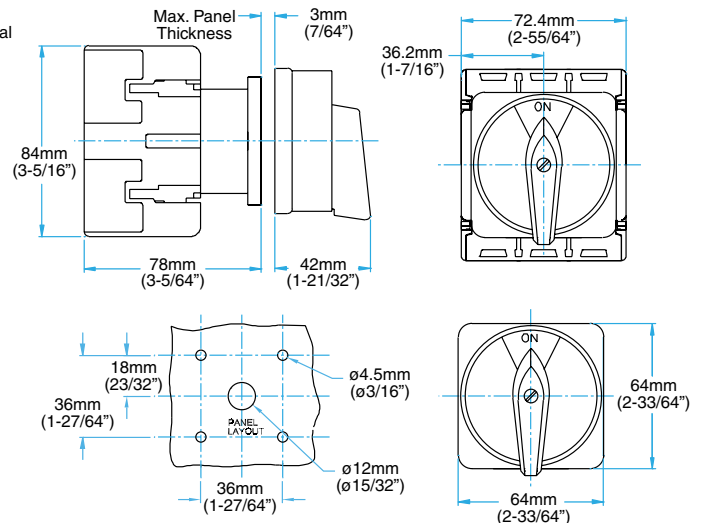


## DOOR MOUNTED DISCONNECT SWITCH WITH DHG OPERATING HANDLE

### 25A - 63A SWITCHES

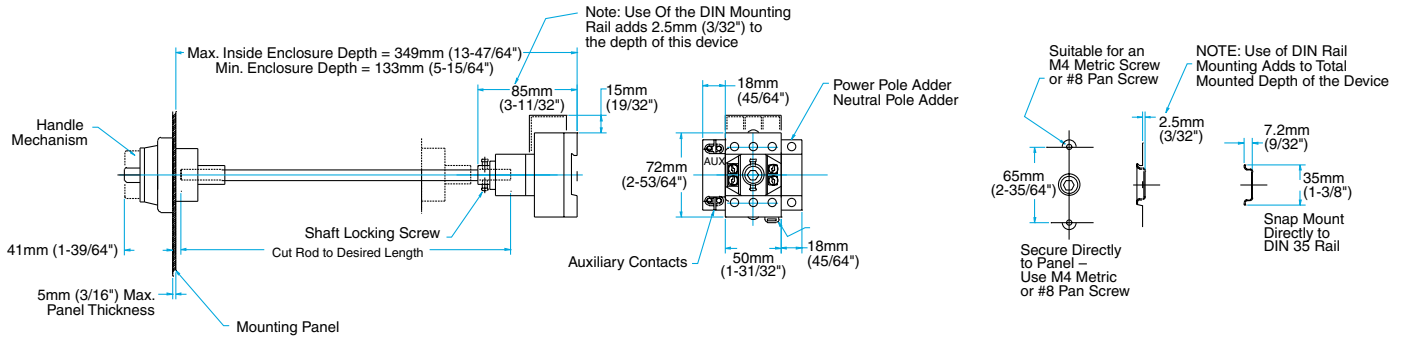


### 80A - 125A SWITCHES

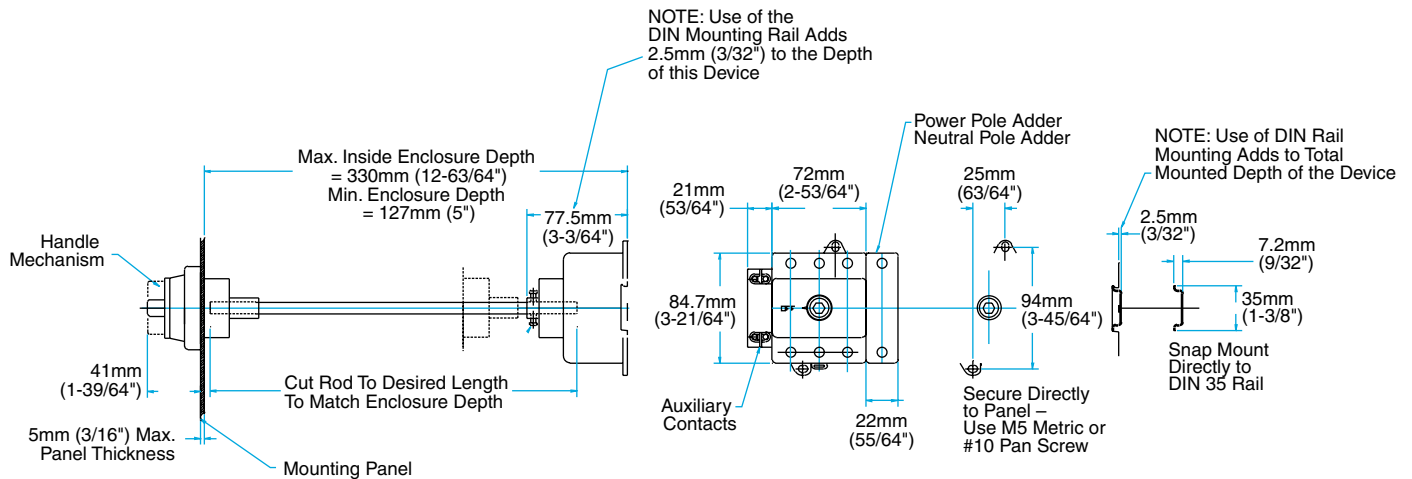


**PANEL MOUNTED DISCONNECT SWITCHES WITH PHM OPERATING HANDLES**

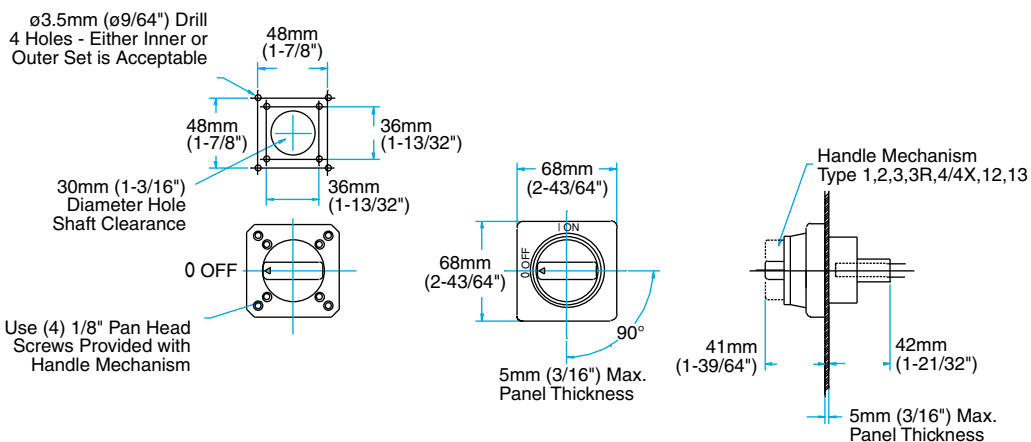
**25A - 63A SWITCHES**



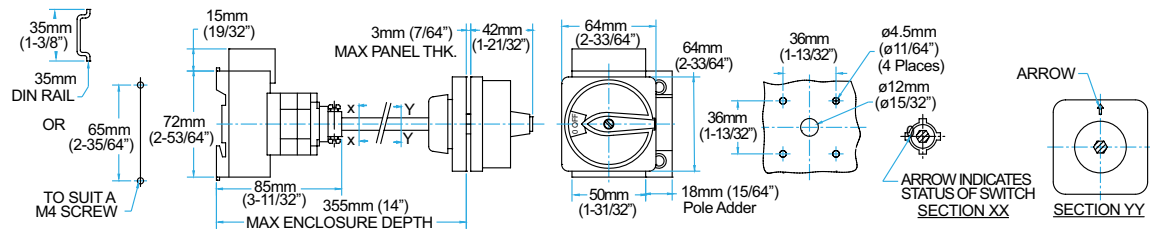
**80A - 125A SWITCHES**



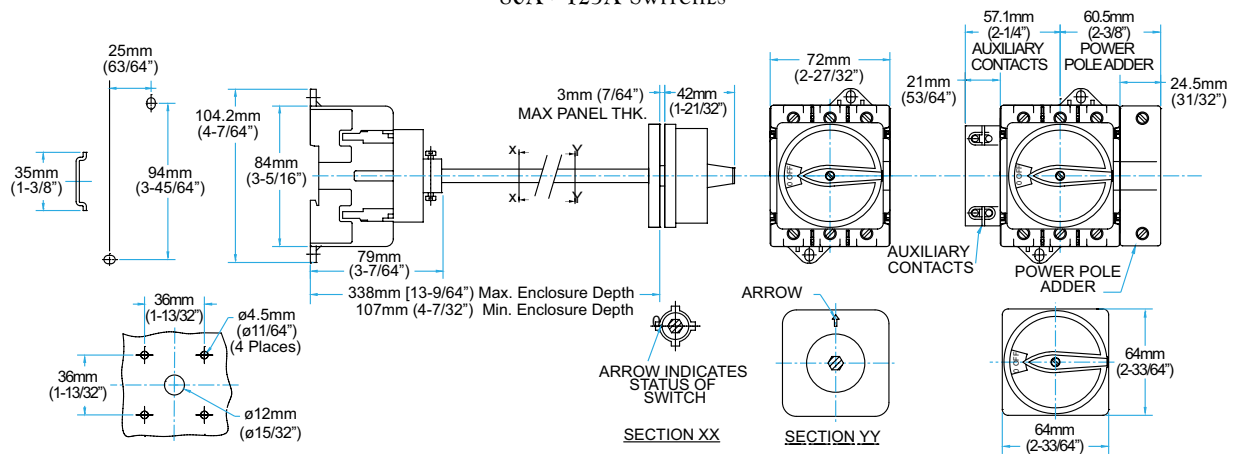
**PHM OPERATING HANDLE MOUNTING HOLE PATTERN**  
For 25A-63A and 80A-125A Switches



## 25A - 63A SWITCHES

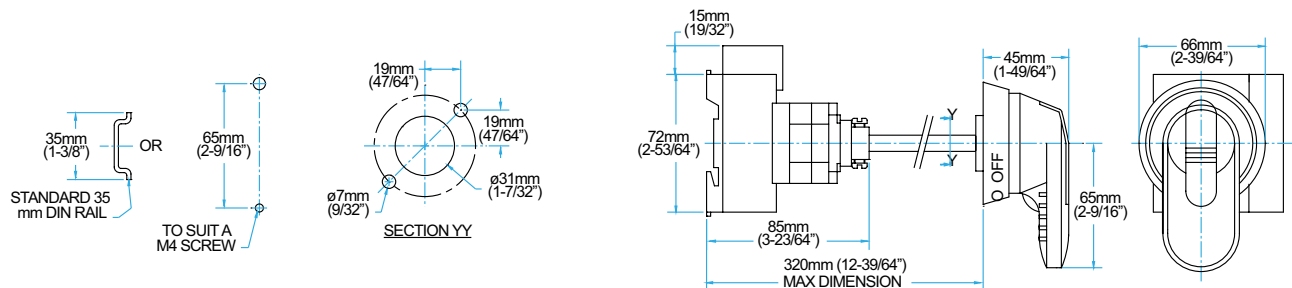


## 80A - 125A SWITCHES



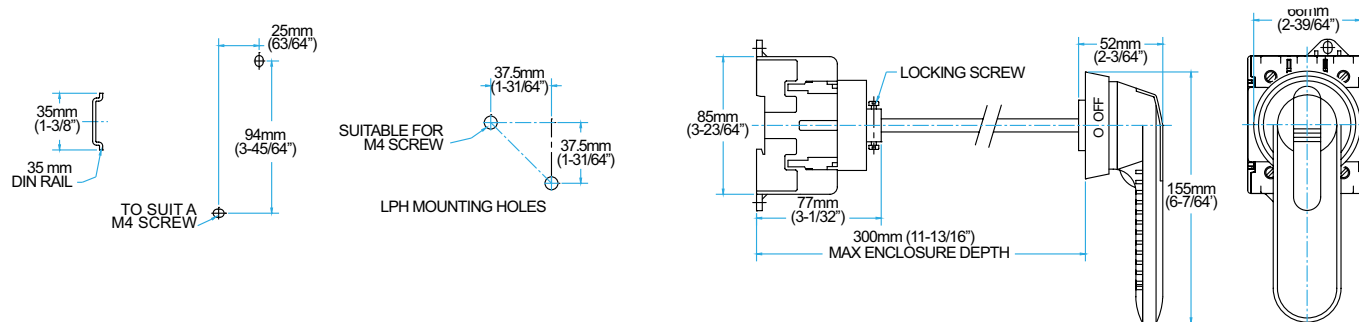
## PANEL MOUNTED DISCONNECT SWITCH WITH SPH OPERATING HANDLE

## 25A - 63A SWITCHES



## PANEL MOUNTED DISCONNECT SWITCH WITH LPH OPERATING HANDLE

## 80A - 125A SWITCHES



### **PANEL MOUNTED DISCONNECT SWITCH WITH SML OPERATING HANDLE**

## 25A - 63A SWITCHES

