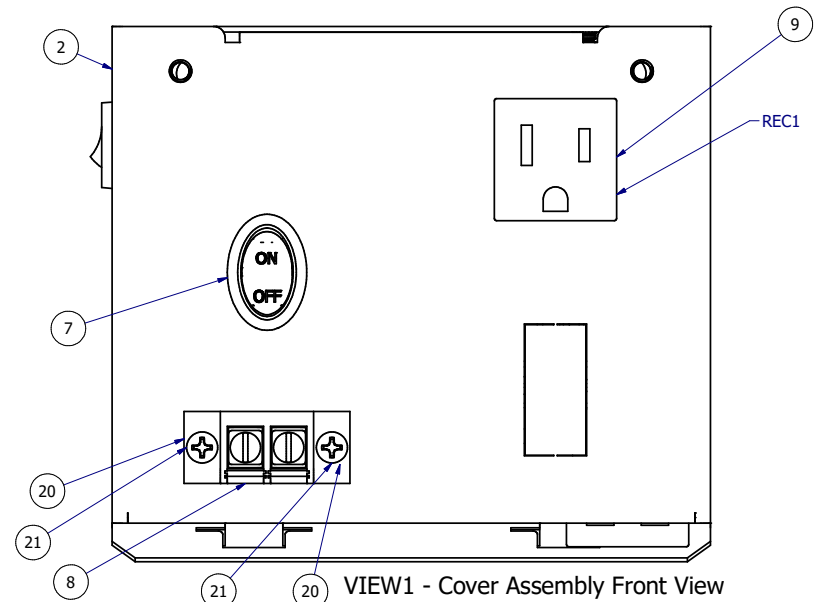
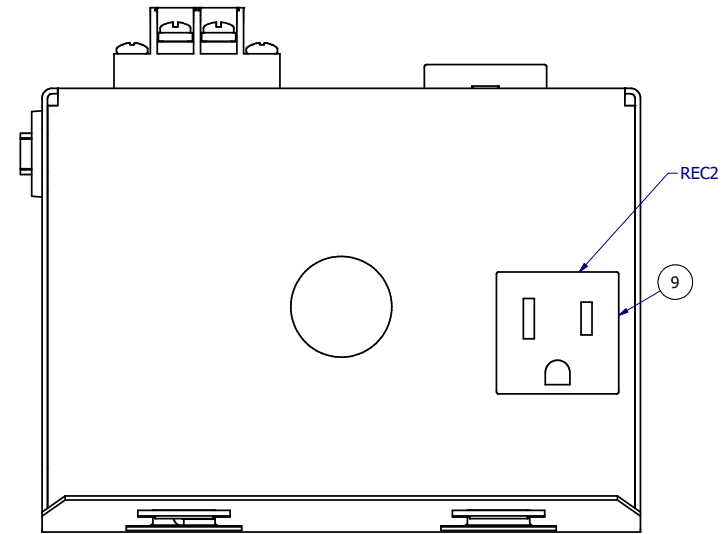


VIEW2 - Cover Assembly Side View
SCALE 1.2 : 1



VIEW1 - Cover Assembly Front View
SCALE 1.2 : 1



VIEW3 - Cover Assembly Bottom View
SCALE 1.2 : 1

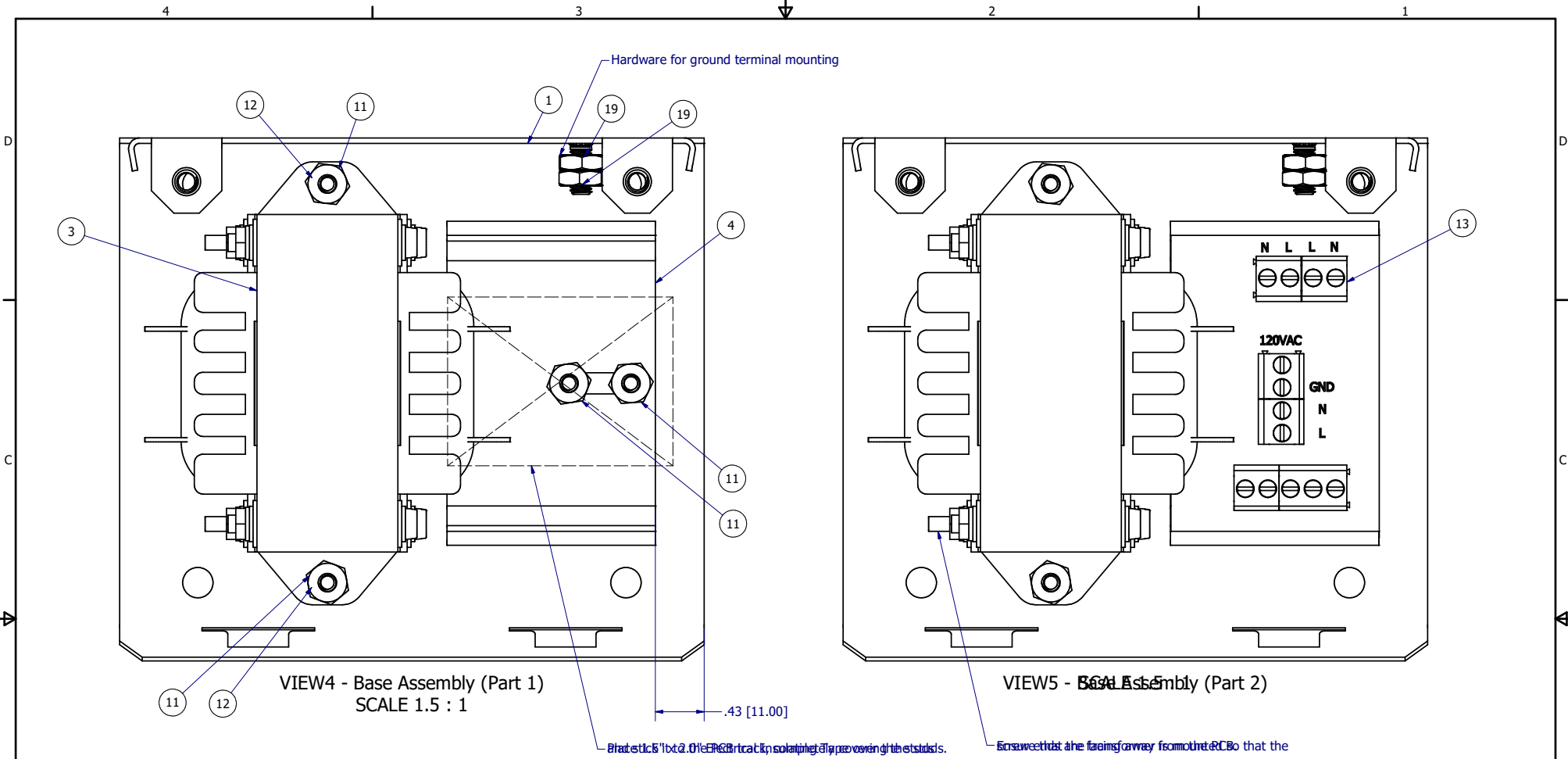
Assembly Notes

Step	Description
1	Snap item #6 into the enclosure cover (item #2) as shown in View2
2	Snap item #7 into the enclosure cover (item #2) as shown in View1
3	Snap item #9 into the enclosure cover (item #2) as shown in View1 & View3
4	Mount Item #8 into the enclosure cover (item #2) with screws (item #21) and lock nuts (item #20) as shown in View1

Bill of Materials

Item	Qty	Part Number	Description	Stock Number
2	1	30E10357G00	5.188" x 4.361" x 3.859" Steel Enclosure For Single Enclosed Power Supply, (Beaver Steel # CM100VASE) - Cover (No Mods)	30E10357G00
6	1	10H90026H01	Circuit Breaker Thermal 4A 250 V AC 32 V DC Push to Reset Panel Mount (W28-XQ1A-4)	10H90026H01
7	1	10H90029H01	Illuminated Rocker Switch (LAMB RE T125/55)	10H90029H01
8	1	10H90031H01	External Terminal Block (BC6-Q308-02)	10H90031H01
9	2	10H90025H01	Panel-Mount Straight-Blade Receptacle (7168K1)	10H90025H01
20	2	10H80008H01	#6-32, 9/64" THK, Zinc Plated Steel Locknut with External-Tooth Lock Washer, (MCM # 90675A007)	MS Locknut #6-32
21	2	10H30023H01	#6-32, 1/2" Long, 18-8 SS, PAN HEAD PHILLIPS MACHINE SCREW (MCM # 91772A148)	SC #6-32 X 1/2-SS

2	3/1/24	Added an additional receptacle	CB	CB
REV	DATE	DESCRIPTION	CHGD BY	APVD BY
REVISION HISTORY				
TOLERANCE X.X +/- 0.040 [1.00] X.XX +/- 0.010 [0.25] X.XXX +/- 0.005 [0.13] X.XXXX +/- 0.001 [0.03] ANGLES +/- 0.5 DEG UNLESS OTHERWISE SPECIFIED		Units: in [mm] Drawn By: cbunnell Modeled By: cbunnell Approved By: cbunnell Created On: 6/15/2022	c3controls P.O. BOX 496 BEAVER, PA 15009 www.c3controls.com Description: EPS - 5.188" x 4.361" x 3.859" Steel Enclosure, (Beaver Steel # CM100VASE) - 100VA Single Final Assembly (Base Options)	
This drawing is the property of c3controls. This drawing may not be copied, used or disclosed, for any purpose except as authorized in writing by c3controls.		Rev #: 2 Size: C Scale: N/A Part Number: 30E90012G02		



Assembly Notes	
Step	Description
1	Mount the PCB Snap Track (item #4) to the enclosure base (item #1). Use Nut (item #11) to secure in place as shown in View4. Place 1.5" x 2.0" Electrical Insulating Tape over the studs and stick it to the PCB track, completely covering the studs.
2	Snap the PCBA (item #13) into the snap track (item #4) as shown in View5.
3	Mount the Transformer (item #3) to the enclosure base (item #1). Use both lockwasher (item #12) & Nut (item #11) to secure in place (2 places) as shown in View4.

Bill of Materials				
Item	Qty	Part Number	Description	Stock Number
1	1	30E10356G00	5.188" x 4.361" x 3.859" Steel Enclosure For Single Enclosed Power Supply, (Beaver Steel # CM100VASE) - Base (No Mods)	30E10356G00
3	1	10H90030H01	100VA, 120VAC (60Hz) Primary, 24VAC (60Hz) Secondary x1, 1HP Transformer	TF100AC1-120-24 PREPPED
4	1	10H90024H03	PCB Snap Track - 1.85in Long (1-1437685-3)	10H90024H03
11	4	10H80005H01	#8-32, 1/8" THK, Zinc Plated STEEL HEX NUT, (MCM # 90480A009)	10H80005H01
12	2	10H40014H01	#8, 0.040" THK, Zinc Plated STEEL SPLIT LOCK WASHER (MCM # 91102A009)	SC #8 LOCK WASHER
13	1	10E90015G02	EPS Enclosure 100VA PCBA	PCBA 10E90015G02 EPS
19	2	10H80007H01	#10-32 , 1/8" Thk, Zinc-Plated Steel Serrated Locknut (MCM # 91762A130)	MS Locknut #10-32

TOLERANCE

X.X +/- 0.040 [1.00]
X.XX +/- 0.010 [0.25]
X.XXX +/- 0.005 [0.13]
X.XXXX +/- 0.001 [0.03]
ANGLES +/- 0.5 DEG
UNLESS OTHERWISE SPECIFIED

Units:

in [mm]

Drawn By:

cbunnell

Modeled By:

cbunnell

Approved By:

cbunnell

Created On:

6/15/2022

This drawing is the property of c3controls. This drawing may not be copied, used or disclosed, for any purpose except as authorized in writing by c3controls.

Rev #:

2

Size:

C

Scale:

N/A

Part Number:

30E90012G02

c3controls®

P.O. BOX 496 BEAVER, PA 15009 www.c3controls.com

Description:

EPS - 5.188" x 4.361" x 3.859" Steel Enclosure, (Beaver Steel # CM100VASE) - 100VA Single Final Assembly (Base Options)

Rev #:

2

Size:

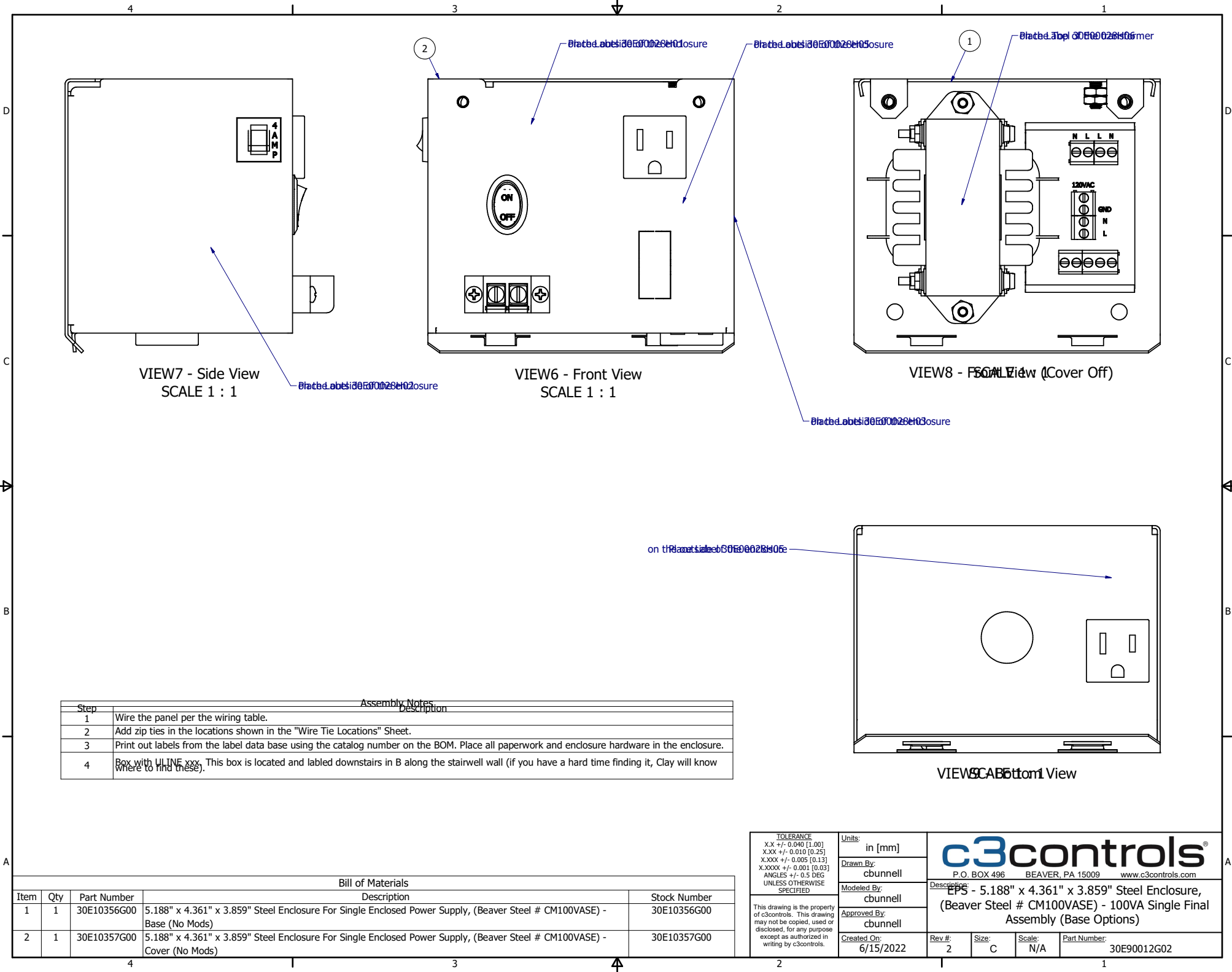
C

Scale:

N/A

Part Number:

30E90012G02



VIEW7 - Side View
SCALE 1 : 1

VIEW6 - Front View
SCALE 1 : 1

VIEW8 - Bottom View (Cover Off)
SCALE 1 : 1

VIEW9 - Back View

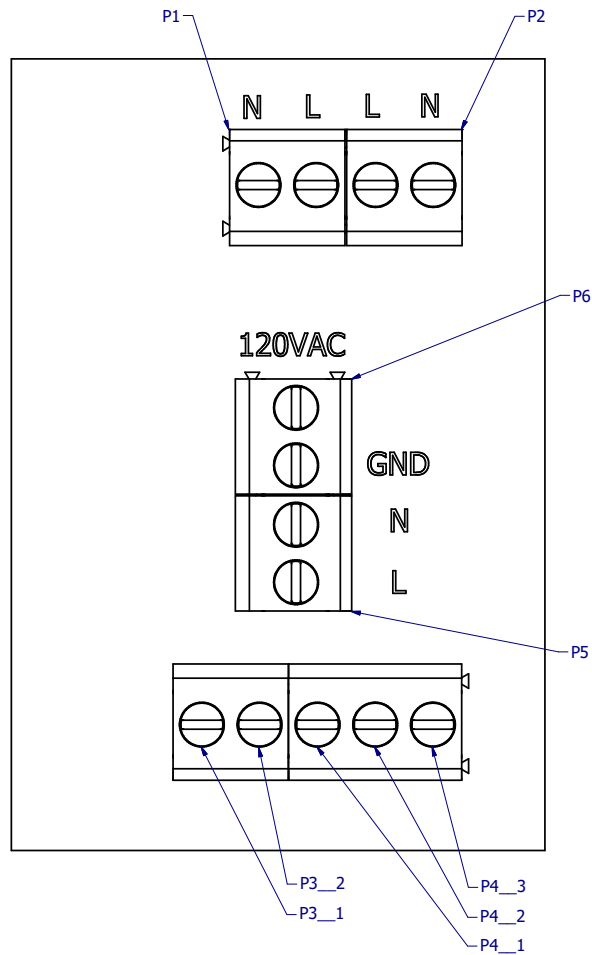
Assembly Notes

Step	Description
1	Wire the panel per the wiring table.
2	Add zip ties in the locations shown in the "Wire Tie Locations" Sheet.
3	Print out labels from the label data base using the catalog number on the BOM. Place all paperwork and enclosure hardware in the enclosure.
4	Box with ULINE xxx. This box is located and labeled downstairs in B along the stairwell wall (if you have a hard time finding it, Clay will know where to find these).

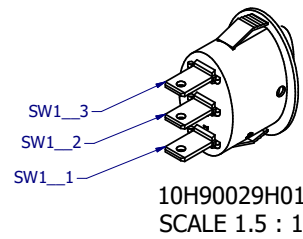
Bill of Materials

Item	Qty	Part Number	Description	Stock Number
1	1	30E10356G00	5.188" x 4.361" x 3.859" Steel Enclosure For Single Enclosed Power Supply, (Beaver Steel # CM100VASE) - Base (No Mods)	30E10356G00
2	1	30E10357G00	5.188" x 4.361" x 3.859" Steel Enclosure For Single Enclosed Power Supply, (Beaver Steel # CM100VASE) - Cover (No Mods)	30E10357G00

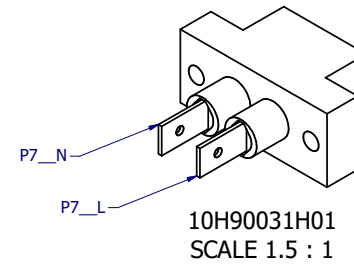
TOLERANCE X.X +/- 0.040 [1.00] X.XX +/- 0.010 [0.25] X.XXX +/- 0.005 [0.13] X.XXXX +/- 0.001 [0.03] ANGLES +/- 0.5 DEG UNLESS OTHERWISE SPECIFIED		Units: in [mm]	c3controls P.O. BOX 496 BEAVER, PA 15009 www.c3controls.com			
Drawn By: cbunnell		Modeled By: cbunnell				
Approved By: cbunnell		Description: EPS - 5.188" x 4.361" x 3.859" Steel Enclosure, (Beaver Steel # CM100VASE) - 100VA Single Final Assembly (Base Options)				
Created On: 6/15/2022		Rev #: 2	Size: C	Scale: N/A	Part Number: 30E90012G02	



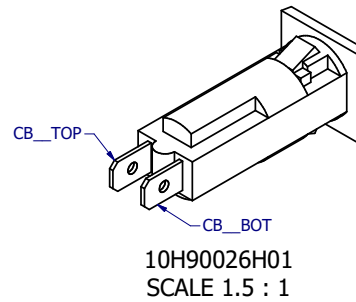
10E9015G02
SCALE 3 : 1



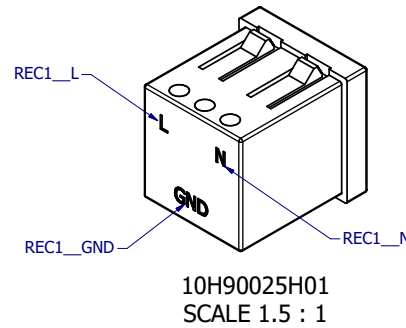
10H90029H01
SCALE 1.5 : 1



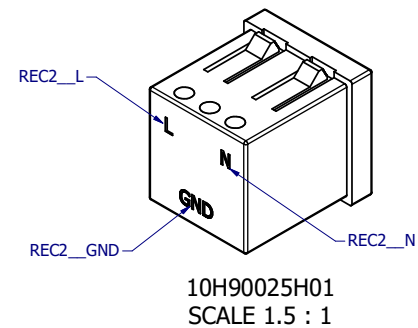
10H90031H01
SCALE 1.5 : 1




10H90026H01
SCALE 1.5 : 1

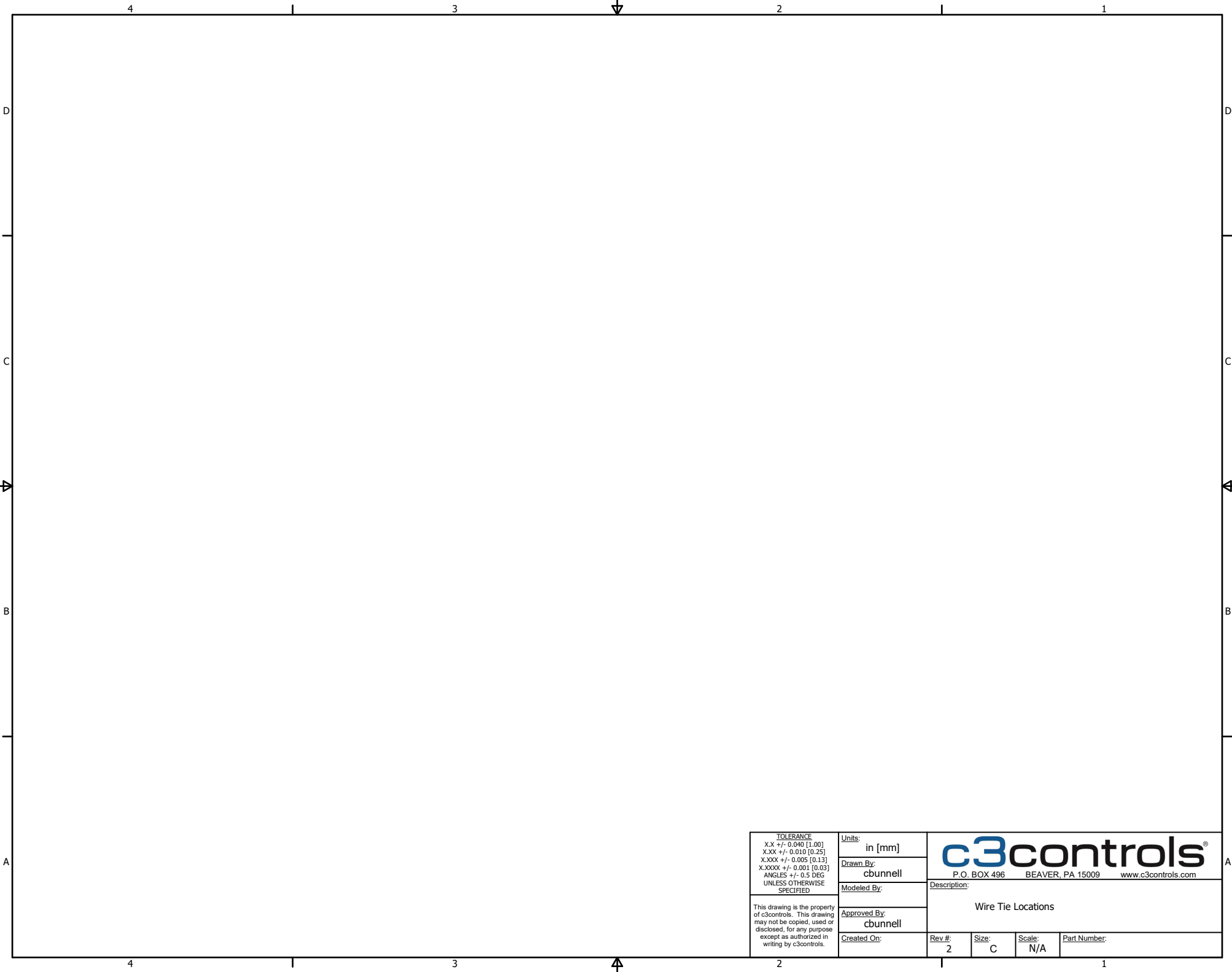


10H90025H01
SCALE 1.5 : 1



10H90025H01
SCALE 1.5 : 1

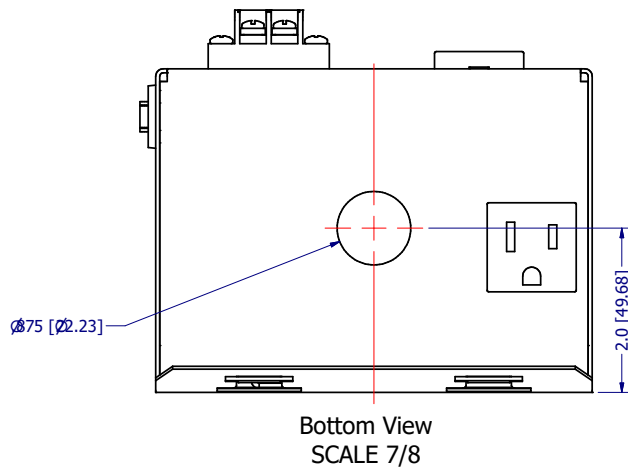
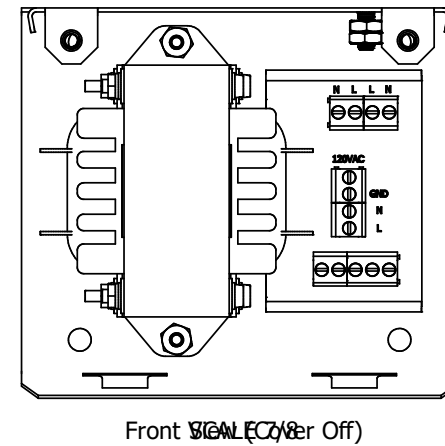
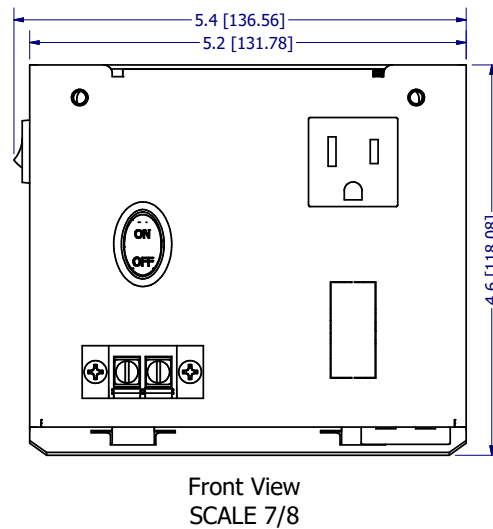
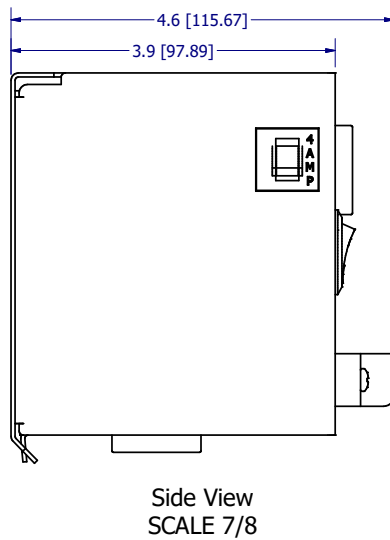
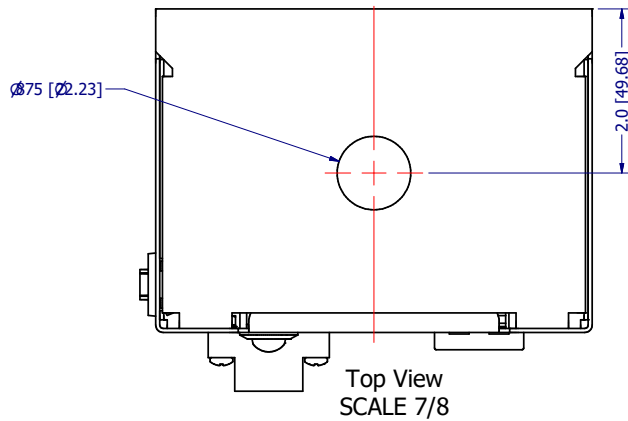
TOLERANCE X.X +/- 0.040 [1.00] X.XX +/- 0.010 [0.25] X.XXX +/- 0.005 [0.13] X.XXXX +/- 0.001 [0.03] ANGLES +/- 0.5 DEG UNLESS OTHERWISE SPECIFIED	Units: in [mm]		 P.O. BOX 496 BEAVER, PA 15009 www.c3controls.com					
	Drawn By: cbunnell						Description: EPS Enclosure 100VA PCBA	
	Modeled By: cbunnell							
	Approved By: cbunnell							
This drawing is the property of c3controls. This drawing may not be copied, used or disclosed, for any purpose except as authorized in writing by c3controls.	Created On: 10/23/2023		Rev #: 2	Size: C	Scale: N/A	Part Number: 10E90015G02		



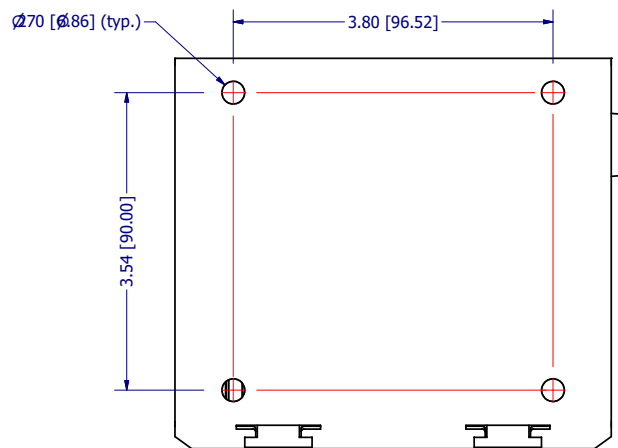
<div>TOLERANCE</div> <div>X.X +/- 0.040 [1.00]</div> <div>X.XX +/- 0.010 [0.25]</div> <div>X.XXX +/- 0.005 [0.13]</div> <div>X.XXXX +/- 0.001 [0.03]</div> <div>ANGLES +/- 0.5 DEG</div> <div>UNLESS OTHERWISE SPECIFIED</div>	Units: <div>in [mm]</div>		<div>c3controls®</div> <div>P.O. BOX 496 BEAVER, PA 15009 www.c3controls.com</div> <div>Description: Wire Tie Locations</div>			
	Drawn By: <div>cbunnell</div>					
	Modeled By:					
	Approved By: <div>cbunnell</div>					
This drawing is the property of c3controls. This drawing may not be copied, used or disclosed, for any purpose except as authorized in writing by c3controls.	Created On:		Rev #:	Size:	Scale:	Part Number:
			2	C	N/A	

COMPONENT INFO			
TERMINAL / SCREW LOCATION	TORQUE (LBF-IN)	WIRE SIZE (AWG)	STRIP LENGTH (IN)
Transformer Mounting	20	N/A	N/A
PCB Snap Track Mounting	7	N/A	N/A
PCB Terminal Blocks	4.5	24-12	0.28

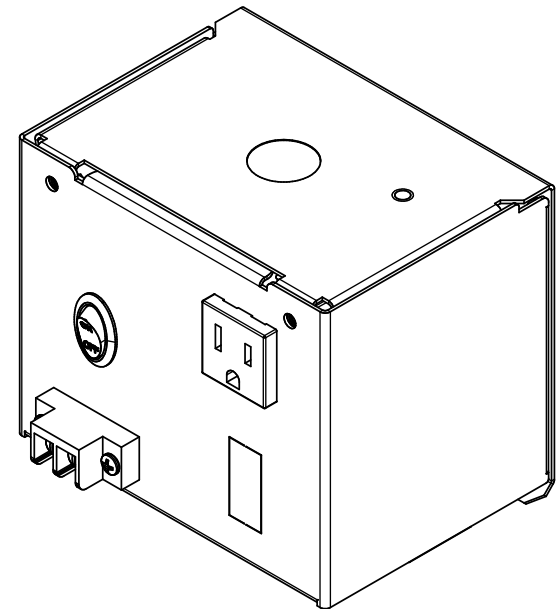
<div>TOLERANCE X.X +/- 0.040 [1.00] X.XX +/- 0.010 [0.25] X.XXX +/- 0.005 [0.13] X.XXXX +/- 0.001 [0.03] ANGLES +/- 0.5 DEG UNLESS OTHERWISE SPECIFIED</div> <div>This drawing is the property of c3controls. This drawing may not be copied, used or disclosed, for any purpose except as authorized in writing by c3controls.</div>	Units: in [mm]		<div><div>c3controls®</div><div>P.O. BOX 496 BEAVER, PA 15009 www.c3controls.com</div></div> <div>Description:</div>			
	Drawn By: cbunnell					
	Modeled By:					
	Approved By: cbunnell					
Created On:		Rev #: 2	Size: C	Scale: N/A	Part Number:	



<div>TOLERANCE X.X +/- 0.040 [1.00] X.XX +/- 0.010 [0.25] X.XXX +/- 0.005 [0.13] X.XXXX +/- 0.001 [0.03] ANGLES +/- 0.5 DEG UNLESS OTHERWISE SPECIFIED</div>	Units: in [mm]		<div>c3controls®</div> <div>P.O. BOX 496 BEAVER, PA 15009 www.c3controls.com</div>			
	Drawn By: cbunnell					
	Modeled By: cbunnell		Description: EPS - 5.188" x 4.361" x 3.859" Steel Enclosure, (Beaver Steel # CM100VASE) - 100VA Single Final Assembly (Base Options)			
	Approved By: cbunnell					
This drawing is the property of c3controls. This drawing may not be copied, used or disclosed, for any purpose except as authorized in writing by c3controls.	Created On: 6/15/2022		Rev #:	Size:	Scale:	Part Number:
			2	C	N/A	30E90012G02



Back View
SCALE 7/8



Isometric View
SCALE 7/8

<div>TOLERANCE X.X +/- 0.040 [1.00] X.XX +/- 0.010 [0.25] X.XXX +/- 0.005 [0.13] X.XXXX +/- 0.001 [0.03] ANGLES +/- 0.5 DEG UNLESS OTHERWISE SPECIFIED</div>	Units:	<div>c3controls®</div> <div>P.O. BOX 496 BEAVER, PA 15009 www.c3controls.com</div>				
	Drawn By:					
	Modeled By:	<div>Description:</div> <div>EPS - 5.188" x 4.361" x 3.859" Steel Enclosure, (Beaver Steel # CM100VASE) - 100VA Single Final Assembly (Base Options)</div>				
	Approved By:					
	This drawing is the property of c3controls. This drawing may not be copied, used or disclosed, for any purpose except as authorized in writing by c3controls.	Created On:	Rev. #:	Size:	Scale:	Part Number:
	6/15/2022	2	C	N/A	30E90012G02	

This drawing is the property of c3controls. This drawing may not be copied, used or disclosed, for any purpose except as authorized in writing by c3controls.