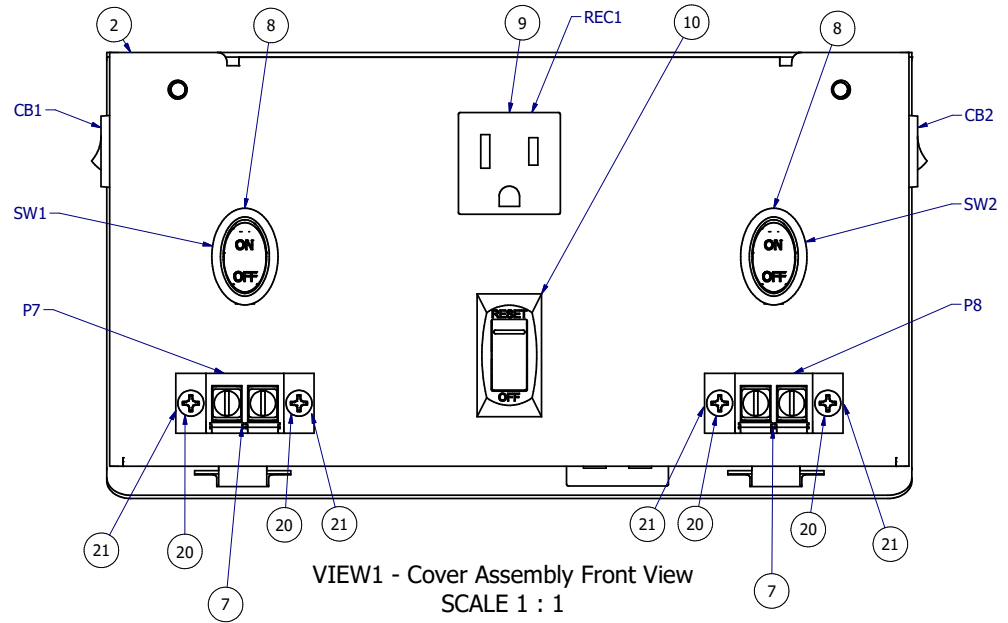
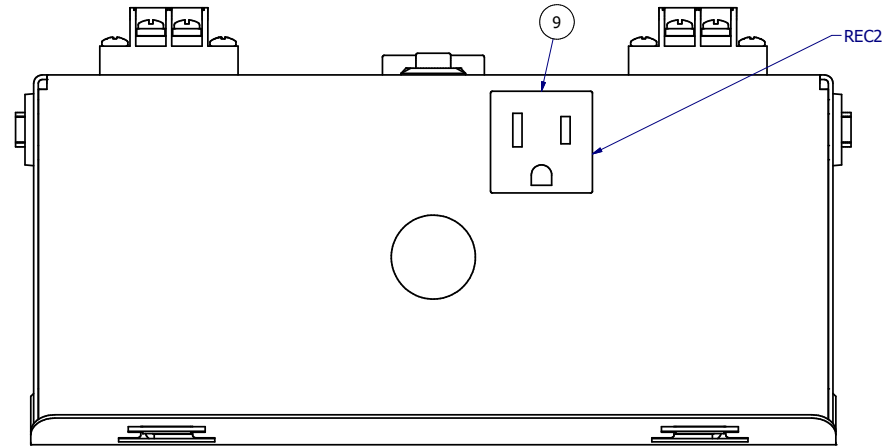


VIEW2 - Cover Assembly Side View
SCALE 1 : 1



VIEW1 - Cover Assembly Front View
SCALE 1 : 1




VIEW3 - Cover Assembly Bottom View
SCALE 1 : 1

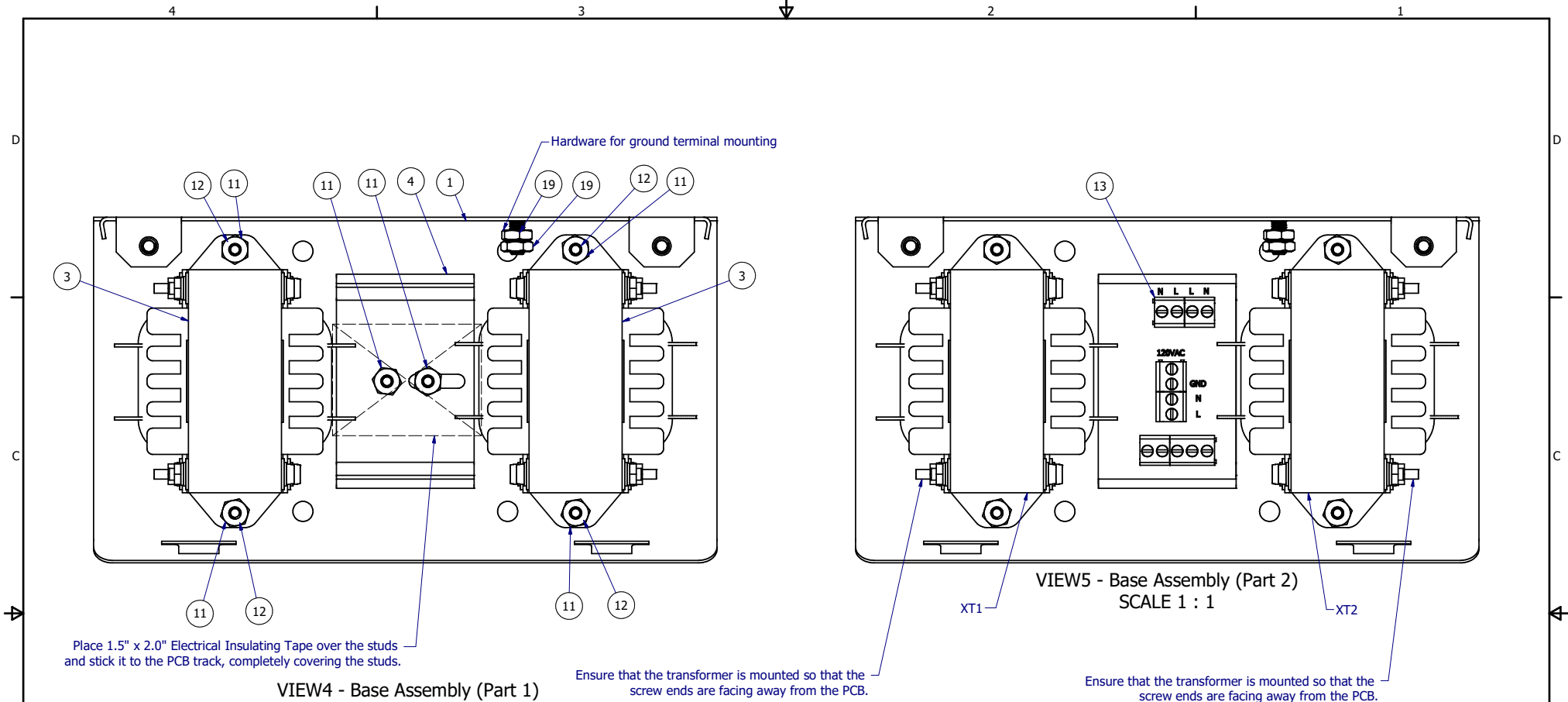
Assembly Notes

Step	Description
1	Snap item #6 into the enclosure cover (item #2) as shown in View2
2	Snap item #8 into the enclosure cover (item #2) as shown in View1
3	Snap item #9 into the enclosure cover (item #2) as shown in View1 & View3
4	Snap item #10 into the enclosure cover (item #2) as shown in View1
5	Mount Item #7 into the enclosure cover (item #2) with screws (item #20) and lock nuts (item #21) as shown in View1

Bill of Materials

Item	Qty	Part Number	Description	Stock Number
2	1	30E10361G00	8.373" x 4.361" x 3.859" Steel Enclosure For Double Enclosed Power Supply, (Beaver Steel # CM100VADE) - Cover (No Mods)	30E10361G00
6	2	10H90026H01	Circuit Breaker Thermal 4A 250 V AC 32 V DC Push to Reset Panel Mount (W28-XQ1A-4)	10H90026H01
7	2	10H90031H01	External Terminal Block (BC6-Q308-02)	10H90031H01
8	2	10H90029H01	Illuminated Rocker Switch (LAMB RE T125/55)	10H90029H01
9	2	10H90025H01	Panel-Mount Straight-Blade Receptacle (7168K1)	10H90025H01
10	1	10H90027H01	Thermal Circuit Breaker Switch, 250 V, 32 V, 10 A, 1 Pole, Panel (C-1005B)	10H90027H01
20	4	10H30023H01	#6-32, 1/2" Long, 18-8 SS, PAN HEAD PHILLIPS MACHINE SCREW (MCM # 91772A148)	SC #6-32 X 1/2-SS
21	4	10H80008H01	#6-32, 9/64" THK, Zinc Plated Steel Locknut with External-Tooth Lock Washer, (MCM # 90675A007)	MS Locknut #6-32

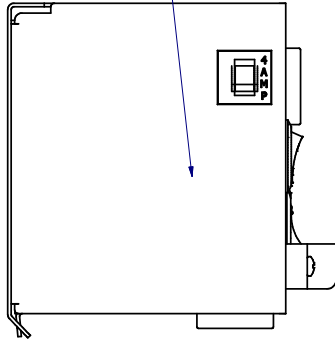
2	3/1/24	Added an additional receptacle		CB	CB
REV	DATE	DESCRIPTION		CHGD BY	APVD BY
REVISION HISTORY					
TOLERANCE X.X +/- 0.040 [1.00] X.XX +/- 0.010 [0.25] X.XXX +/- 0.005 [0.13] X.XXXX +/- 0.001 [0.03] ANGLES +/- 0.5 DEG UNLESS OTHERWISE SPECIFIED		Units: in [mm]	 P.O. BOX 496 BEAVER, PA 15009 www.c3controls.com Description: EPS - 8.373" x 4.361" x 3.859" Steel Enclosure, (Beaver Steel # CM100VADE) - 100VA Dual Final Assembly (All Options)		
This drawing is the property of c3controls. This drawing may not be copied, used or disclosed, for any purpose except as authorized in writing by c3controls.		Drawn By: cbunnell			
		Modeled By: cbunnell			
		Approved By: cbunnell			
Created On: 6/15/2022		Rev #: 2	Size: C	Scale: N/A	Part Number: 30E90013G01



Assembly Notes	
Step	Description
1	Mount the PCB Snap Track (item #4) to the enclosure base (item #1). Use Nut (item #11) to secure in place as shown in View4. Place 1.5" x 2.0" Electrical Insulating Tape over the studs and stick it to the PCB track, completely covering the studs.
2	Snap the PCBA (item #13) into the snap track (item #4) as shown in View5.
3	Mount the Transformer (item #3) to the enclosure base (item #1). Use both lockwasher (item #12) & Nut (item #11) to secure in place (2 places) as shown in View4.

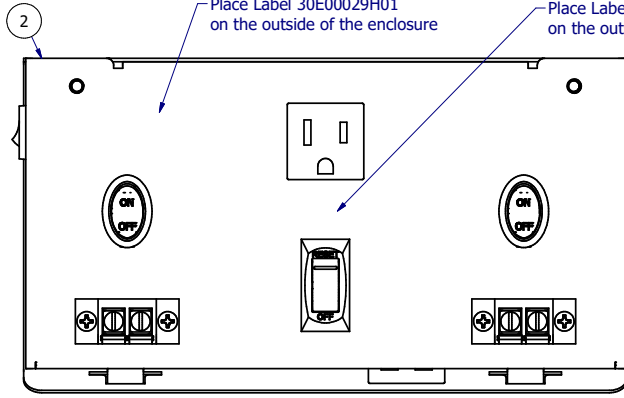
Bill of Materials					TOLERANCE		Units:		c3controls®			
Item	Qty	Part Number	Description	Stock Number	X.X +/- 0.040 [1.00]	in [mm]	Drawn By:		P.O. BOX 496 BEAVER, PA 15009 www.c3controls.com			
1	1	30E10360G00	8.373" x 4.361" x 3.859" Steel Enclosure For Double Enclosed Power Supply, (Beaver Steel # CM100VADE) - Base (No Mods)	30E10360G00	X.XX +/- 0.010 [0.25]		cbunnell					
3	2	10H90030H01	100VA, 120VAC (60Hz) Primary, 24VAC (60Hz) Secondary x1, 1HP Transformer	TF100AC1-120-24 PREPPED	X.XXX +/- 0.005 [0.13]		Modeled By:		Description: EPS - 8.373" x 4.361" x 3.859" Steel Enclosure, (Beaver Steel # CM100VADE) - 100VA Dual Final Assembly (All Options)			
4	1	10H90024H03	PCB Snap Track - 1.85in Long (1-1437685-3)	10H90024H03	X.XXXX +/- 0.001 [0.03]		cbunnell					
11	6	10H80005H01	#8-32, 1/8" THK, Zinc Plated STEEL HEX NUT, (MCM # 90480A009)	10H80005H01	ANGLES +/- 0.5 DEG		Approved By:		Created On: 6/15/2022			
12	4	10H40014H01	#8, 0.040" THK, Zinc Plated STEEL SPLIT LOCK WASHER (MCM # 91102A009)	SC #8 LOCK WASHER	UNLESS OTHERWISE SPECIFIED		cbunnell					
13	1	10E90015G02	EPS Enclosure 100VA PCBA	PCBA 10E90015G02 EPS	This drawing is the property of c3controls. This drawing may not be copied, used or disclosed, for any purpose except as authorized in writing by c3controls.				Rev #: 2			
19	2	10H80007H01	#10-32, 1/8" Thk, Zinc-Plated Steel Serrated Locknut (MCM # 91762A130)	MS Locknut #10-32					Size: C			
									Scale: N/A			
									Part Number: 30E90013G01			

Place Label 30E00029H02
on the outside of the enclosure



VIEW7 - Side View
SCALE 3/4

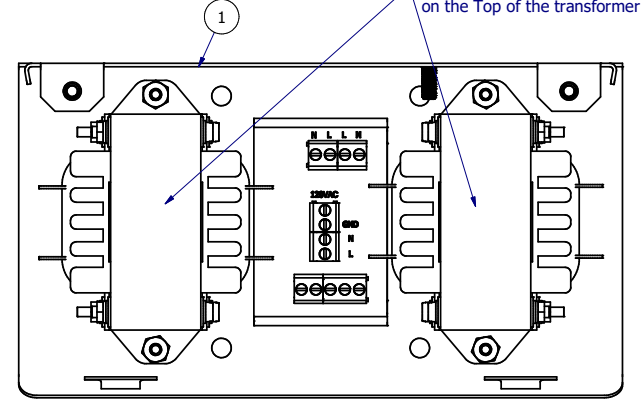
Place Label 30E00029H01
on the outside of the enclosure



VIEW6 - Front View
SCALE 3/4

Place Label 30E00029H05
on the outside of the enclosure

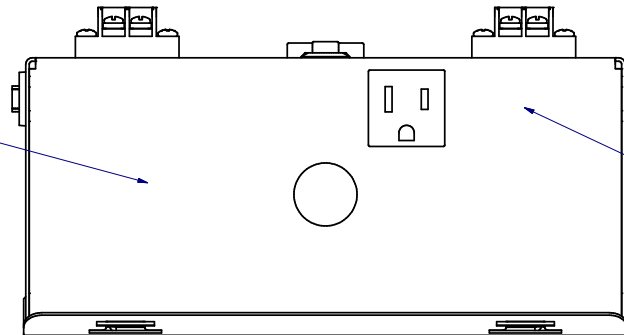
Place Label 30E00029H04
on the outside of the enclosure



VIEW8 - Front View (Cover Off)
SCALE 3/4

Place Label 30E00029H06
on the Top of the transformer

Place Label 30E00029H03
on the outside of the enclosure



Place Label 30E00029H07
on the outside of the enclosure

VIEW9 - Bottom View
SCALE 3/4

Assembly Notes

Step	Description
1	Wire the panel per the wiring table.
2	Add zip ties in the locations shown in the "Wire Tie Locations" Sheet.
3	Print out labels from the label data base using the catalog number on the BOM. Place all paperwork and enclosure hardware in the enclosure.
4	Box with ULINE xxx. This box is located and labled downstairs in B along the stairwell wall (if you have a hard time finding it, Clay will know where to find these).

Bill of Materials

Item	Qty	Part Number	Description	Stock Number
1	1	30E10360G00	8.373" x 4.361" x 3.859" Steel Enclosure For Double Enclosed Power Supply, (Beaver Steel # CM100VADE) - Base (No Mods)	30E10360G00
2	1	30E10361G00	8.373" x 4.361" x 3.859" Steel Enclosure For Double Enclosed Power Supply, (Beaver Steel # CM100VADE) - Cover (No Mods)	30E10361G00

TOLERANCE
X.X +/- 0.040 [1.00]
X.XX +/- 0.010 [0.25]
X.XXX +/- 0.005 [0.13]
X.XXXX +/- 0.001 [0.03]
ANGLES +/- 0.5 DEG
UNLESS OTHERWISE
SPECIFIED

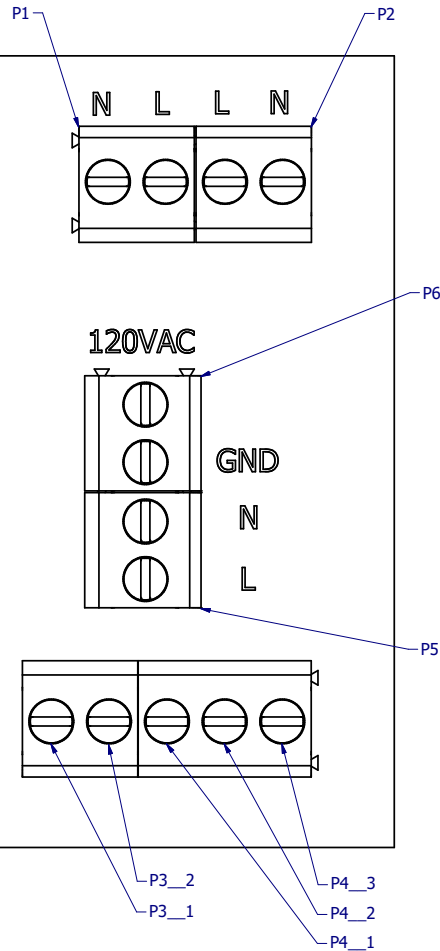
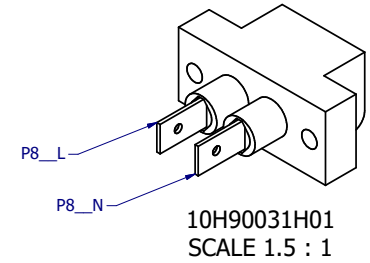
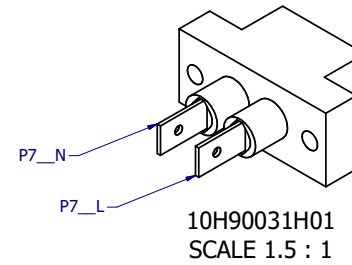
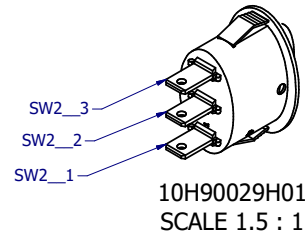
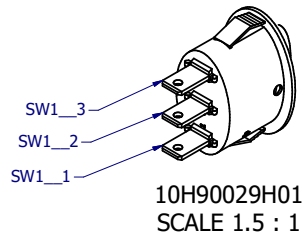
Units: in [mm]
Drawn By: cbunnell
Modeled By: cbunnell
Approved By: cbunnell

Created On: 6/15/2022

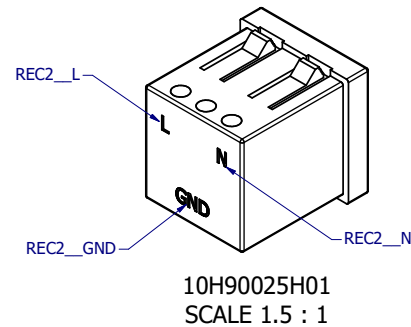
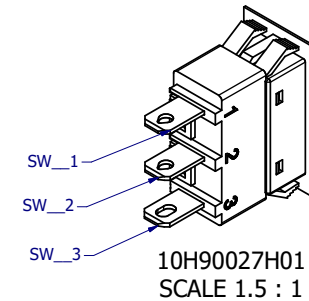
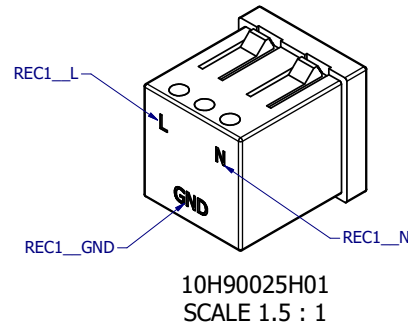
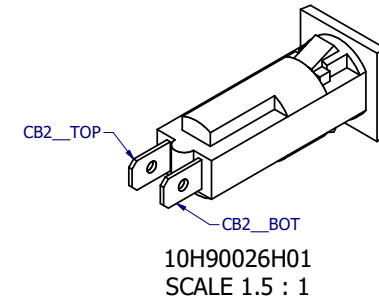
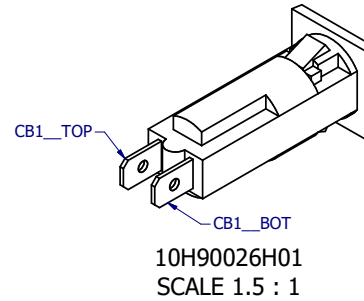
c3controls
P.O. BOX 496 BEAVER, PA 15009 www.c3controls.com

EPS - 8.373" x 4.361" x 3.859" Steel Enclosure,
(Beaver Steel # CM100VADE) - 100VA Dual Final
Assembly (All Options)

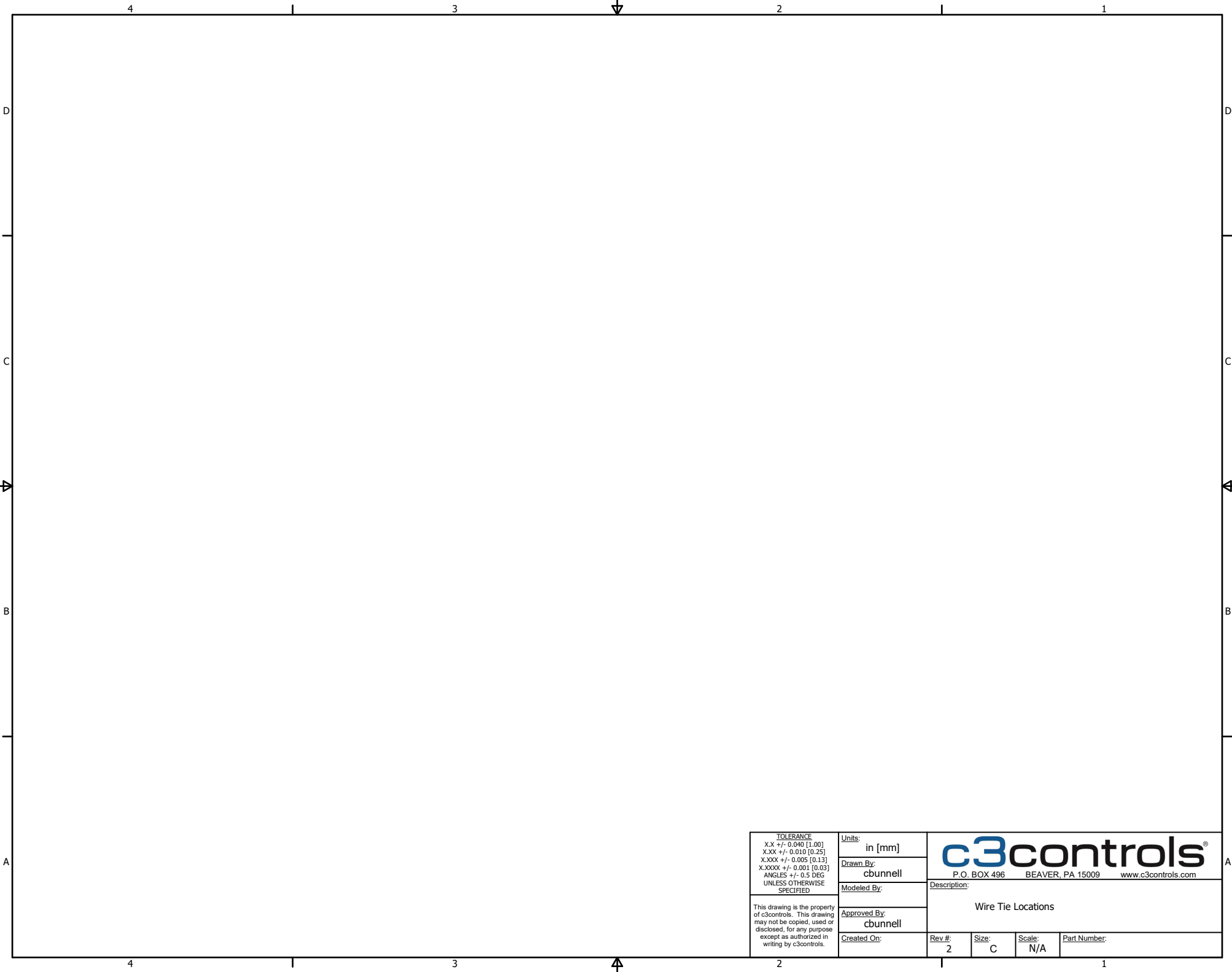
Rev #: 2 Size: C Scale: N/A Part Number: 30E90013G01



10E9015G02
SCALE 3 : 1



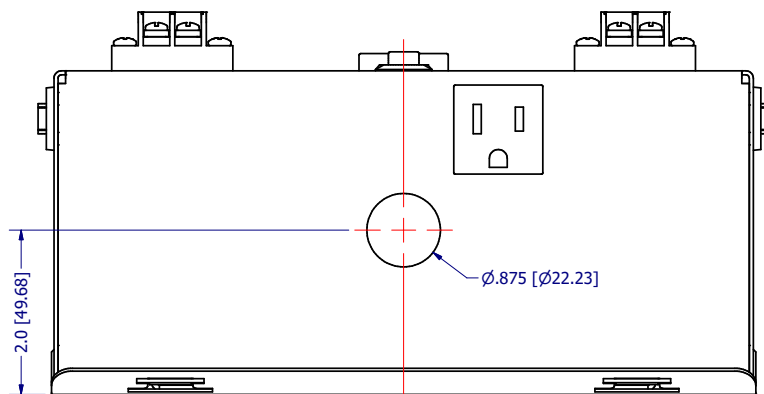
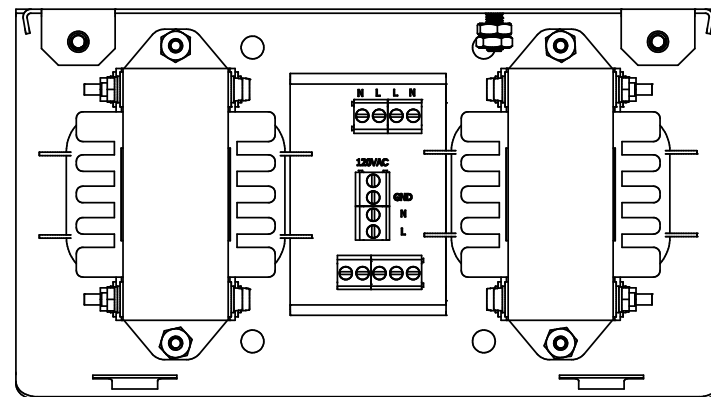
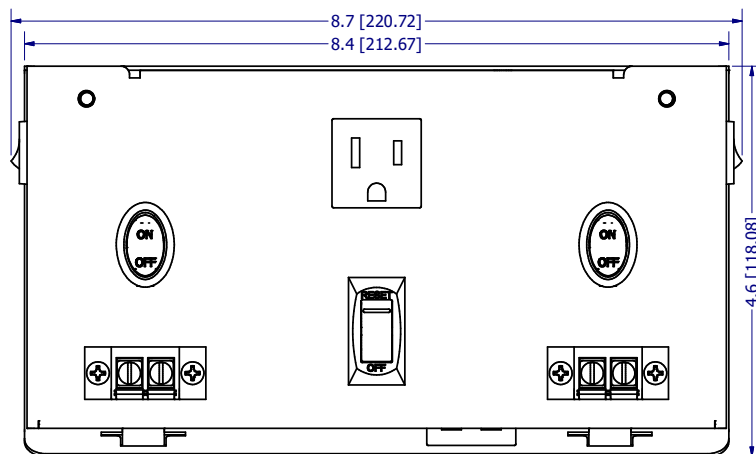
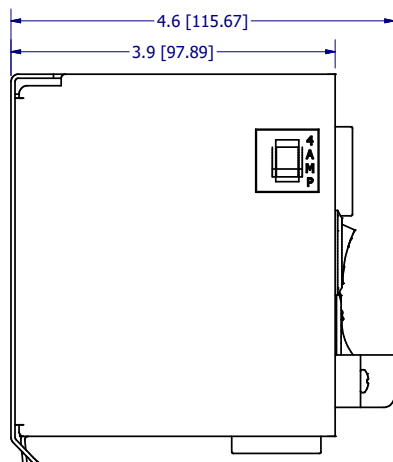
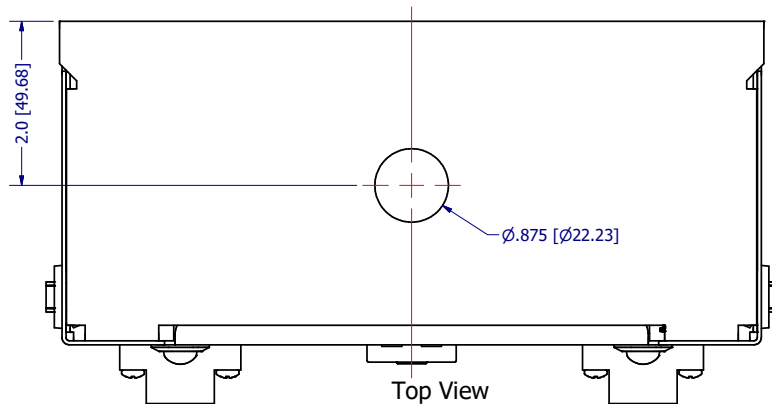
<div>TOLERANCE X.X +/- 0.040 [1.00] X.XX +/- 0.010 [0.25] X.XXX +/- 0.005 [0.13] X.XXXX +/- 0.001 [0.03] ANGLES +/- 0.5 DEG UNLESS OTHERWISE SPECIFIED</div>	Units: in [mm]		<div>c3controls®</div> <div>P.O. BOX 496 BEAVER, PA 15009 www.c3controls.com</div>			
	Drawn By: cbunnell					
	Modeled By: cbunnell		Description: EPS Enclosure 100VA PCBA			
	Approved By: cbunnell					
This drawing is the property of c3controls. This drawing may not be copied, used or disclosed, for any purpose except as authorized in writing by c3controls.	Created On: 10/23/2023		Rev #: 2	Size: C	Scale: N/A	Part Number: 10E90015G02




<div>TOLERANCE</div> <div>X.X +/- 0.040 [1.00]</div> <div>X.XX +/- 0.010 [0.25]</div> <div>X.XXX +/- 0.005 [0.13]</div> <div>X.XXXX +/- 0.001 [0.03]</div> <div>ANGLES +/- 0.5 DEG</div> <div>UNLESS OTHERWISE SPECIFIED</div>	<div>Units:</div> <div>in [mm]</div>	<div>c3controls®</div> <div>P.O. BOX 496 BEAVER, PA 15009 www.c3controls.com</div>							
	<div>Drawn By:</div> <div>cbunnell</div>					<div>Description:</div> <div>Wire Tie Locations</div>			
	<div>Modeled By:</div>								
	<div>Approved By:</div> <div>cbunnell</div>								
	<div>This drawing is the property of c3controls. This drawing may not be copied, used or disclosed, for any purpose except as authorized in writing by c3controls.</div>	<div>Created On:</div>	<div>Rev #:</div> <div>2</div>	<div>Size:</div> <div>C</div>	<div>Scale:</div> <div>N/A</div>	<div>Part Number:</div>			

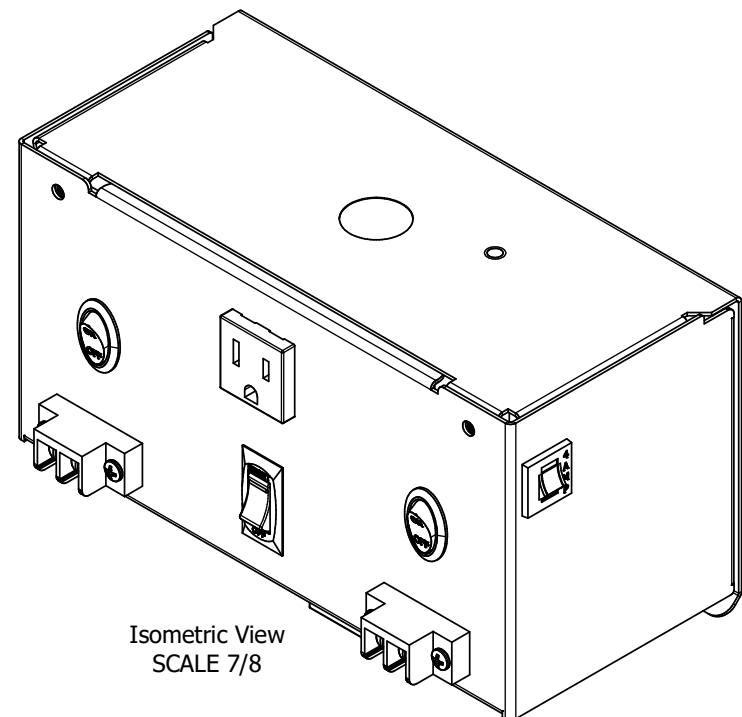
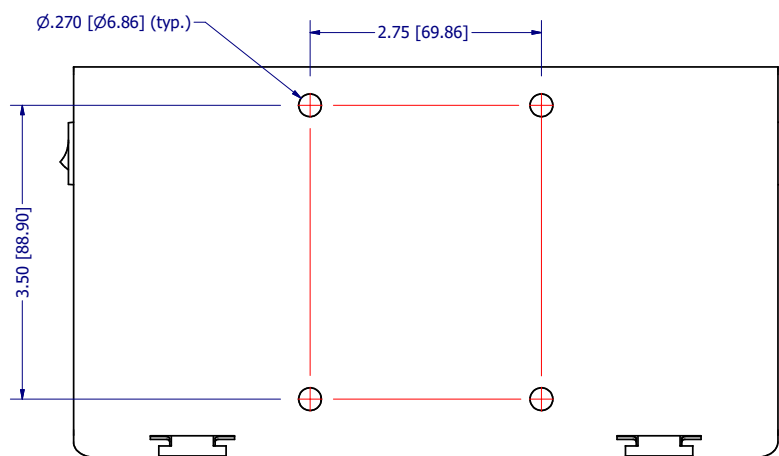
COMPONENT INFO			
TERMINAL / SCREW LOCATION	TORQUE (LBF-IN)	WIRE SIZE (AWG)	STRIP LENGTH (IN)
Transformer Mounting	20	N/A	N/A
PCB Snap Track Mounting	7	N/A	N/A
PCB Terminal Blocks	4.5	24-12	0.28

<div>TOLERANCE X.X +/- 0.040 [1.00] X.XX +/- 0.010 [0.25] X.XXX +/- 0.005 [0.13] X.XXXX +/- 0.001 [0.03] ANGLES +/- 0.5 DEG UNLESS OTHERWISE SPECIFIED</div> <div>This drawing is the property of c3controls. This drawing may not be copied, used or disclosed, for any purpose except as authorized in writing by c3controls.</div>	Units: in [mm]		<div><div>c3controls®</div><div>P.O. BOX 496 BEAVER, PA 15009 www.c3controls.com</div></div> <div>Description:</div>			
	Drawn By: cbunnell					
	Modeled By:					
	Approved By: cbunnell					
	Created On:		Rev #: 2	Size: C	Scale: N/A	Part Number:



<div>TOLERANCE X.X +/- 0.040 [1.00] X.XX +/- 0.010 [0.25] X.XXX +/- 0.005 [0.13] X.XXXX +/- 0.001 [0.03] ANGLES +/- 0.5 DEG UNLESS OTHERWISE SPECIFIED</div>	Units: <div>in [mm]</div>		<div> P.O. BOX 496 BEAVER, PA 15009 www.c3controls.com EPS - 8.373" x 4.361" x 3.859" Steel Enclosure, (Beaver Steel # CM100VADE) - 100VA Dual Final Assembly (All Options)</div>			
	Drawn By: <div>cbunnell</div>					
	Modeled By: <div>cbunnell</div>					
	Approved By: <div>cbunnell</div>					
<div>This drawing is the property of c3controls. This drawing may not be copied, used or disclosed, for any purpose except as authorized in writing by c3controls.</div>	Created On: <div>6/15/2022</div>		Rev #: <div>2</div>	Size: <div>C</div>	Scale: <div>N/A</div>	Part Number: <div>30E90013G01</div>

EPS - 8.373" x 4.361" x 3.859" Steel Enclosure,
(Beaver Steel # CM100VADE) - 100VA Dual Final
Assembly (All Options)



<div>TOLERANCE X.X +/- 0.040 [1.00] XXX +/- 0.010 [0.25] XXXX +/- 0.005 [0.13] X.XXXX +/- 0.001 [0.03] ANGLES +/- 0.5 DEG UNLESS OTHERWISE SPECIFIED</div>	Units:	in [mm]	<div>c3controls®</div> <div>P.O. BOX 496 BEAVER, PA 15009 www.c3controls.com</div>							
	Drawn By:	cbunnell								
	Modeled By:	cbunnell	Description: EPS - 8.373" x 4.361" x 3.859" Steel Enclosure, (Beaver Steel # CM100VADE) - 100VA Dual Final Assembly (All Options)							
	Approved By:	cbunnell								
	This drawing is the property of c3controls. This drawing may not be copied, used or disclosed, for any purpose except as authorized in writing by c3controls.	Created On:	6/15/2022	Rev. #:	2	Size:	C	Scale:	N/A	Part Number: