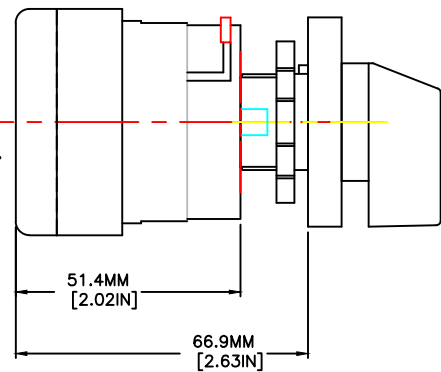
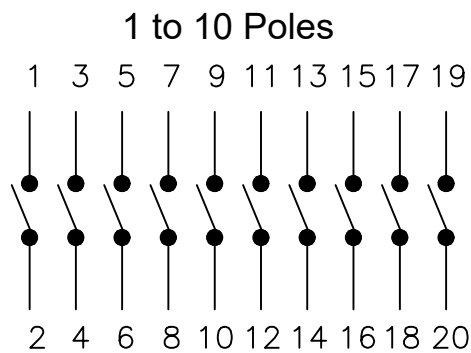
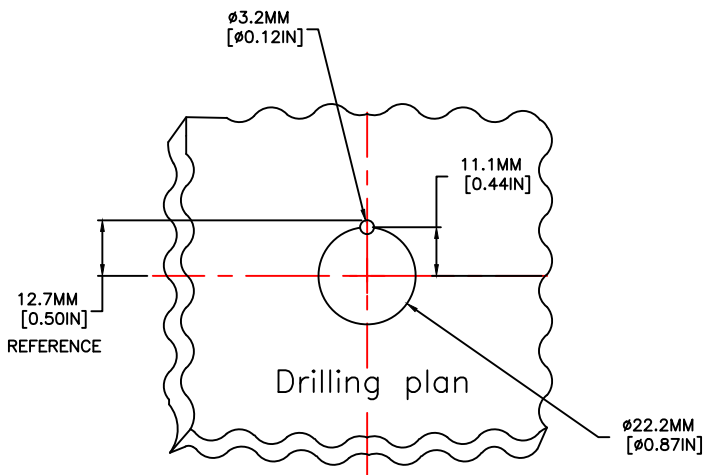


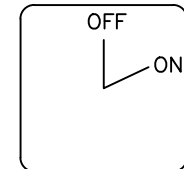
SINGLE STAGE SW. [1 & 2 POLES]



SWITCH DEPTH= SINGLE STAGE + 15 mm PER ADDITIONAL STAGE



Maintained 60°



A61

25A / 32A

60C10012

<p>TOLERANCE</p> <p>XX +/- 0.02 XXX +/- 0.005 XXXX +/- 0.001 ANGLES +/- 0.5 DEG</p> <p>UNLESS OTHERWISE SPECIFIED</p>		
	<p>P.O. BOX 496 BEAVER, PA 15009 www.c3controls.com</p>	
<p>Drawn By: RJJ</p>		
<p>Date: 11-10-06 Scale: 1:1 Drawing Number: 60C10012</p>		

CODES: 110XX