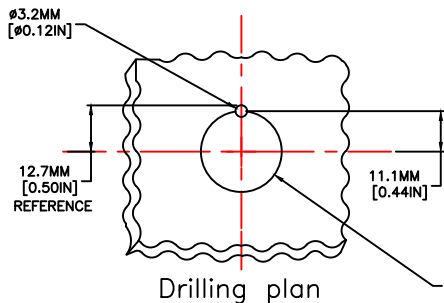
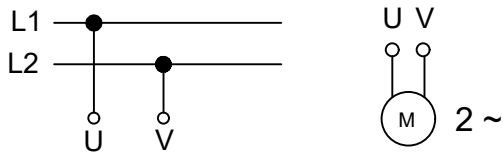


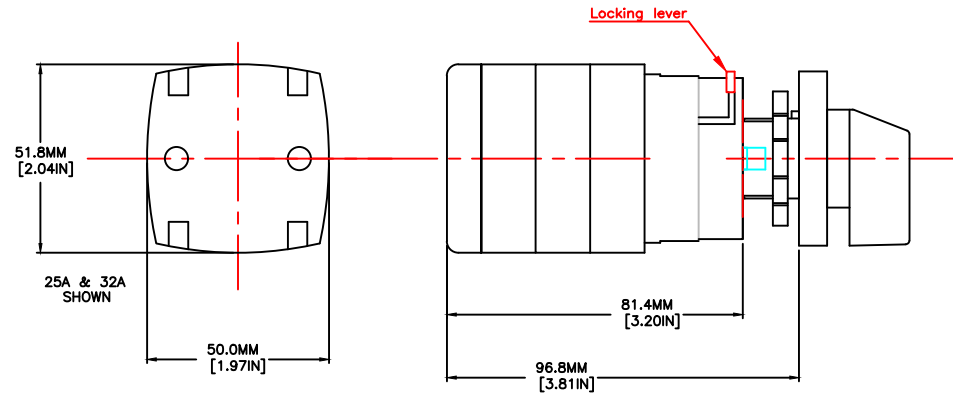
**CODE : 51210**



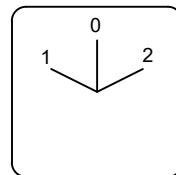
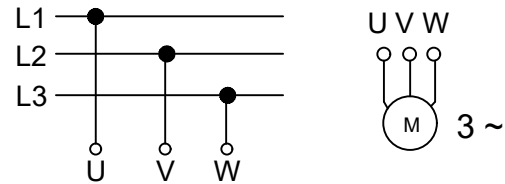
Drilling plan

ø22.2MM [ø0.87IN]

**L22 HANDLE SHOWN  
ALSO SPECIFY N22**



**CODE : 51211**



B61

- A. U & V ARE SWITCHING
- B. POSITION 1 = REVERSING  
POSITION 2 = FORWARD  
(REFERS TO OPERATOR PLATE MARKINGS)

**25A / 32A**

**60C10039**

<small>TOLERANCES: XX +/- 0.02 XXX +/- 0.05 XXXX +/- 0.01 ANGLES +/- 0.5 DEG</small>			
<small>UNLESS OTHERWISE SPECIFIED</small>		<small>P.O. BOX 495 BEAVER, PA 15009 www.c3controls.com</small>	
<small>This drawing is the property of c3controls. The drawing may not be copied, used or disclosed, for any purpose except as authorized in writing by c3controls.</small>		<b>MOTOR REVERSING</b> Cam Switch SERIES 51210 & 51211 25A & 32A -----Product OUTLINES	
<small>Drawn By: R.L.J.</small>	<small>Checked By: J.M.P.</small>	<small>Scale: 1:1</small>	<small>Part No: 60C10039</small>
<small>Issue: 11-13-06</small>		<small>Since: 1978</small>	

REV#	BY	DESCRIPTION	DATE
1	M. ROKNICH	REVISED DRAWING TO SHOW U & V SWITCHING	03-26-13