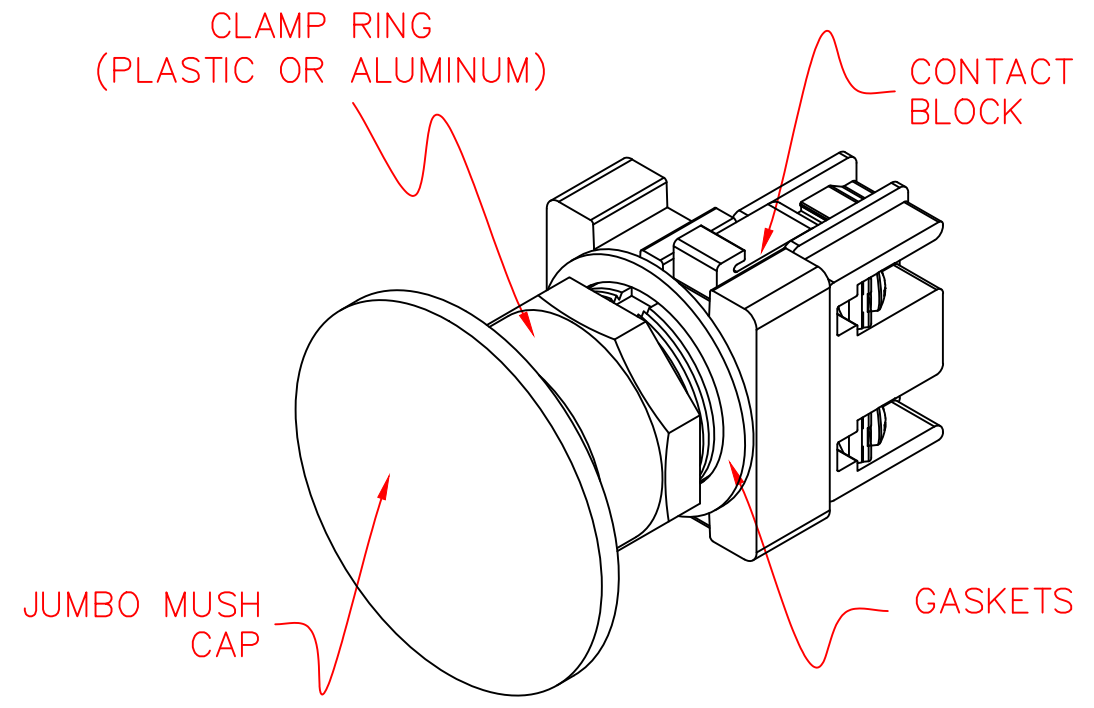


$\frac{3}{16}$ "      2  
 $\frac{1}{4}$ "      1  
 \*REMOVE ONE ADD'L GASKET WHEN USING A LEGEND PLATE



NOTES:

- 1) MOUNTING HOLE IN PANEL –  $\phi 1\text{--}3/16$  (30MM)
- 3) MOUNTING HOLE SPACING (FOR STANDARD LEGEND PLATES) – HORIZONTAL & VERTICAL DISTANCE – 2.250 CENTER TO CENTER
- 2) CHOICE OF ALUMINUM OR PLASTIC CLAMP RING (NEMA 4 OR NEMA 4X).

XXX	XXXXXXXXXX	XXXX	XXX	30MM PRODUCT LINE JUMBO MUSH CAP PUSH BUTTON OPERATOR W/CONTACT BLOCK DATA SHEET
XXX	XXXXXXXXXX	XXXX	XXX	
XXX	XXXXXXXXXX	XXXX	XXX	
XXX	XXXXXXXXXX	XXXX	XXX	
XXX	XXXXXXXXXX	XXXX	XXX	
XXX	XXXXXXXXXX	XXXX	XXX	
REV	DESCRIPTION	DATE	BY	DRAWN BY: RCG      DATE: 08-08-01