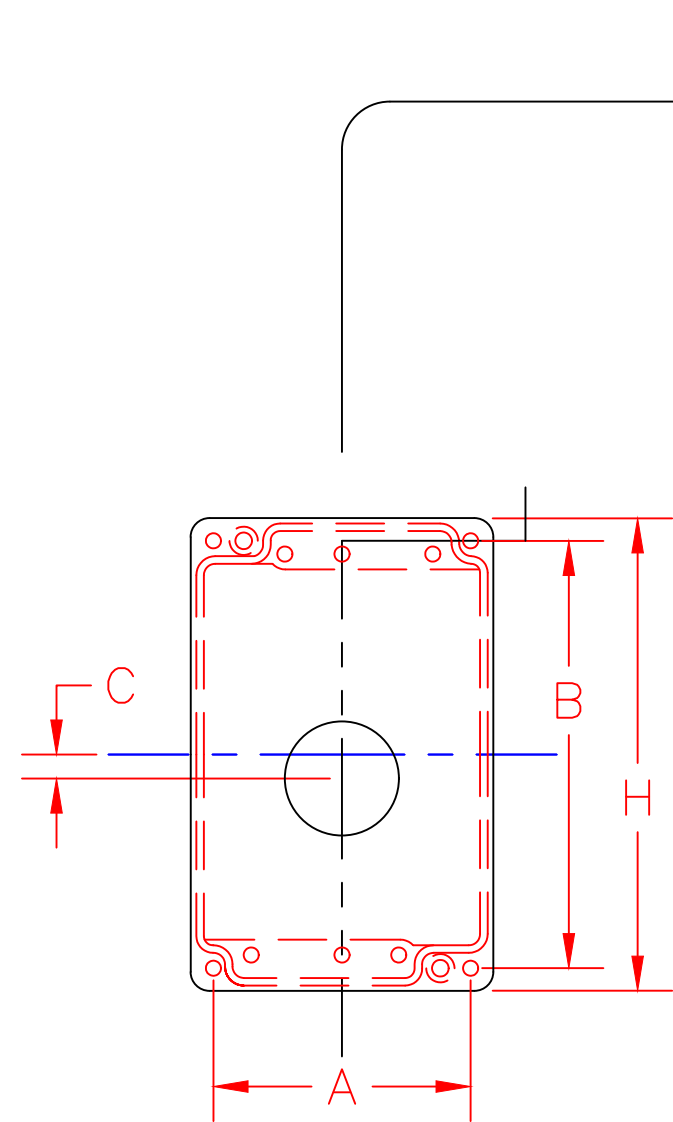
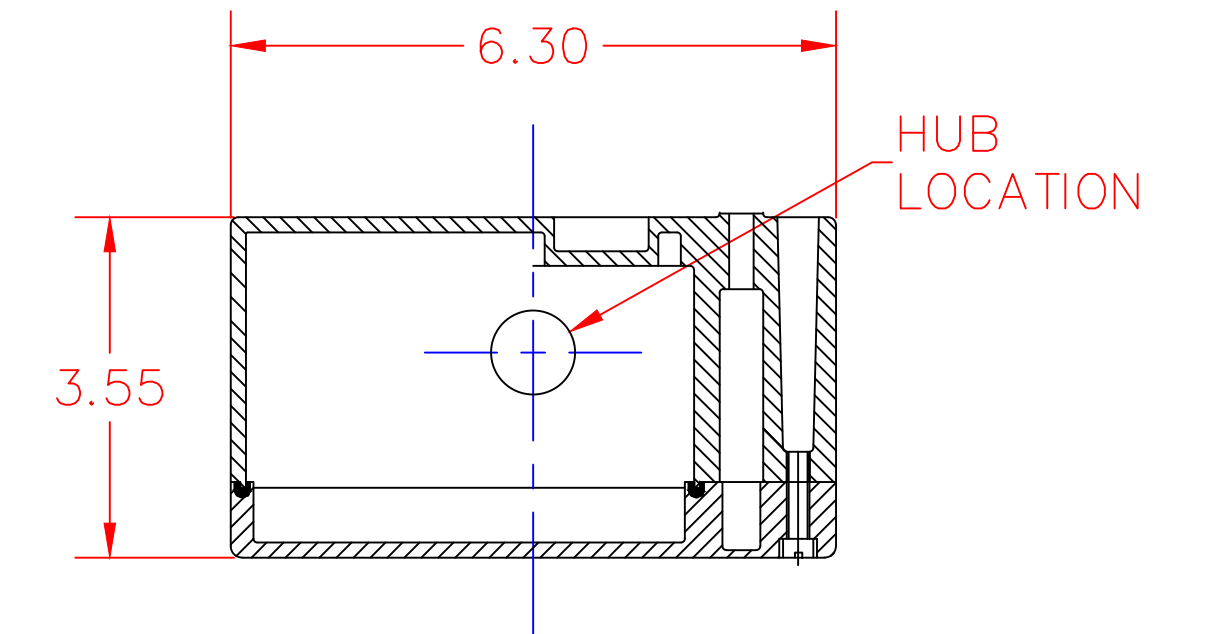
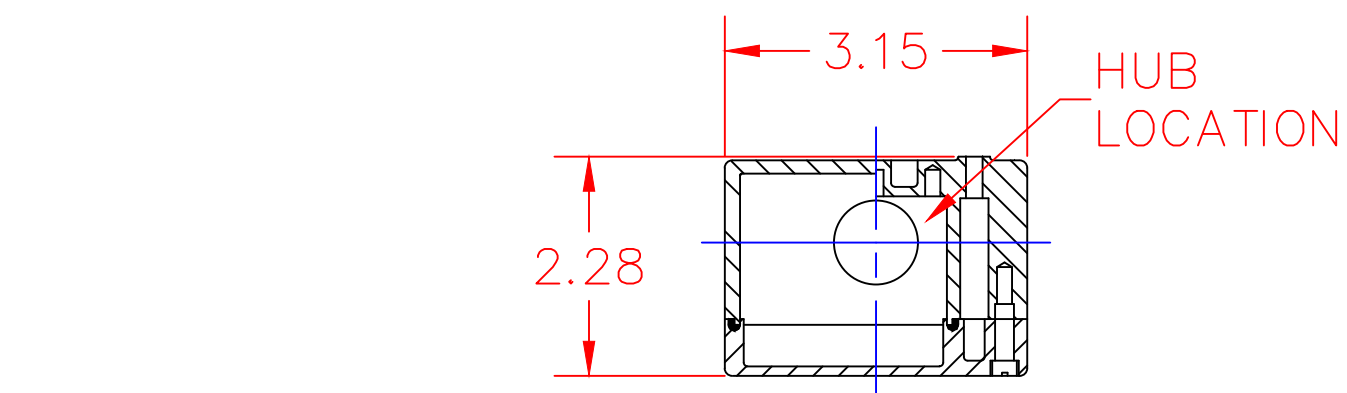
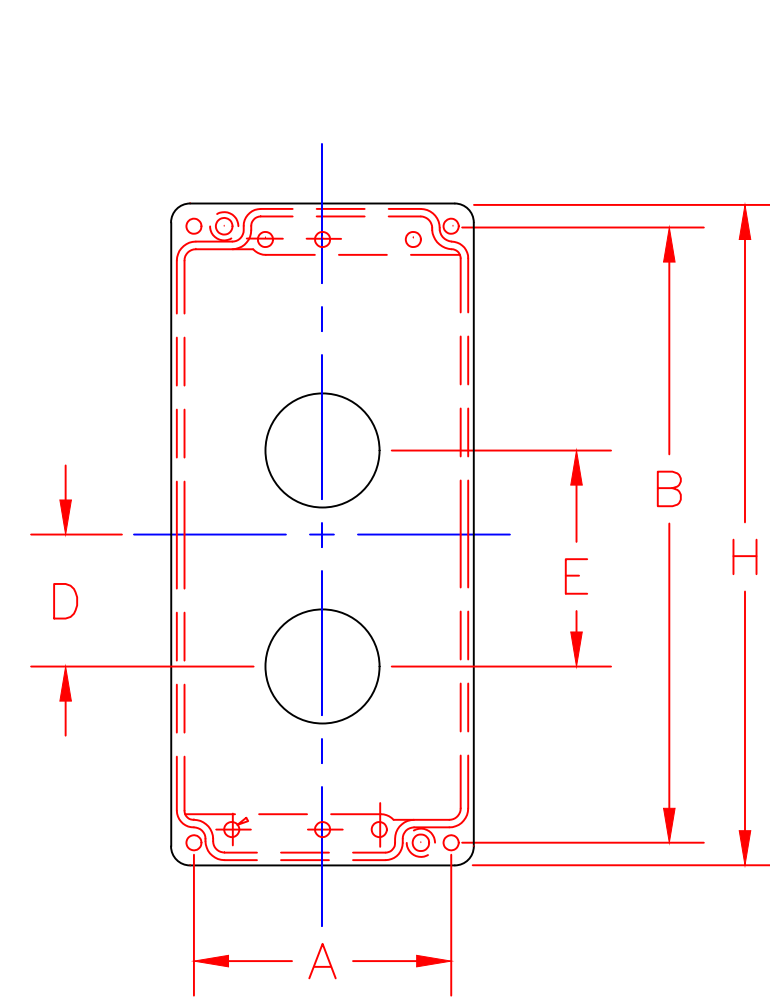


NOTE:

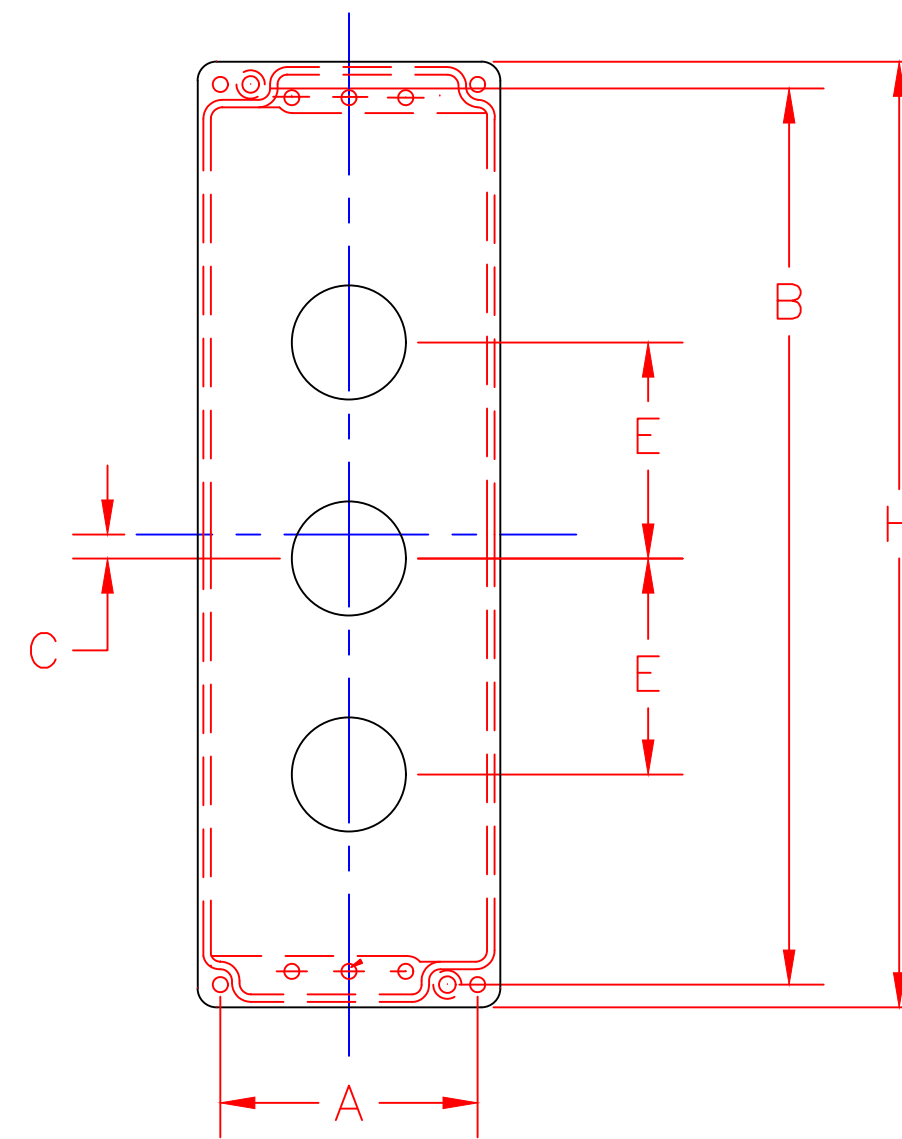
- 1) SPACING DESIGNED TO ACCOMPANY STANDARD AND NARROW LEGEND PLATES – CONSULT WITH CONTROL CONCEPTS FOR TALL AND SPECIAL LEGEND PLATE OPTIONS
- 2) WHEN USING MECHANICAL INTERLOCKS – CENTER LINE DISTANCE ARE 2 INCHES
- 3) ALL OPERATOR HOLES ARE 1- $\frac{3}{16}$  DIA
- 4) SEE HUB CHART FOR HUB OPTIONS AND DRILLED HOLE SIZES. ALL HUBS ARE CENTERED ON BOTTOM FACE UNLESS OTHERWISE SPECIFIED.
- 5) CONTACT CONTROL CONCEPTS FOR CUSTOM ENCLOSURES
- 6)  $\frac{3}{4}$ " AND 1" HUBS ONLY NOT AVAILABLE ON 1, 2, 3, AND 4 UNIT ENCLOSURES. CONTACT CONTROL CONCEPTS FOR OTHER OPTIONS



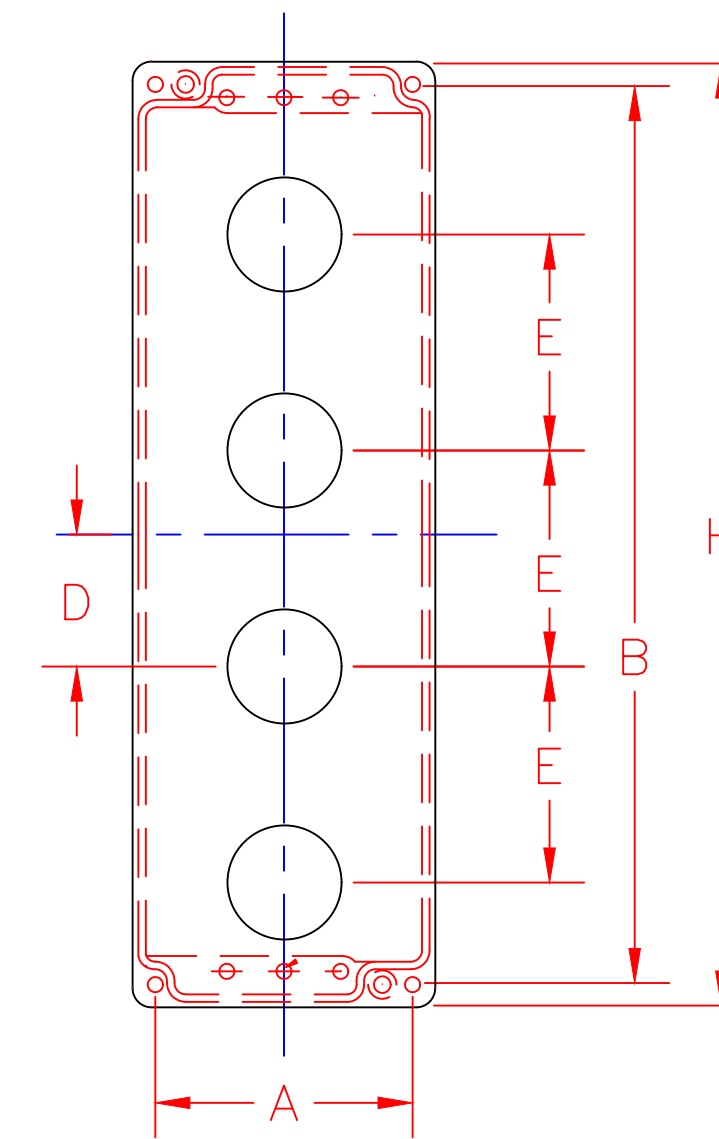
1 UNIT ENCLOSURE  
DC1 (ZAG06)



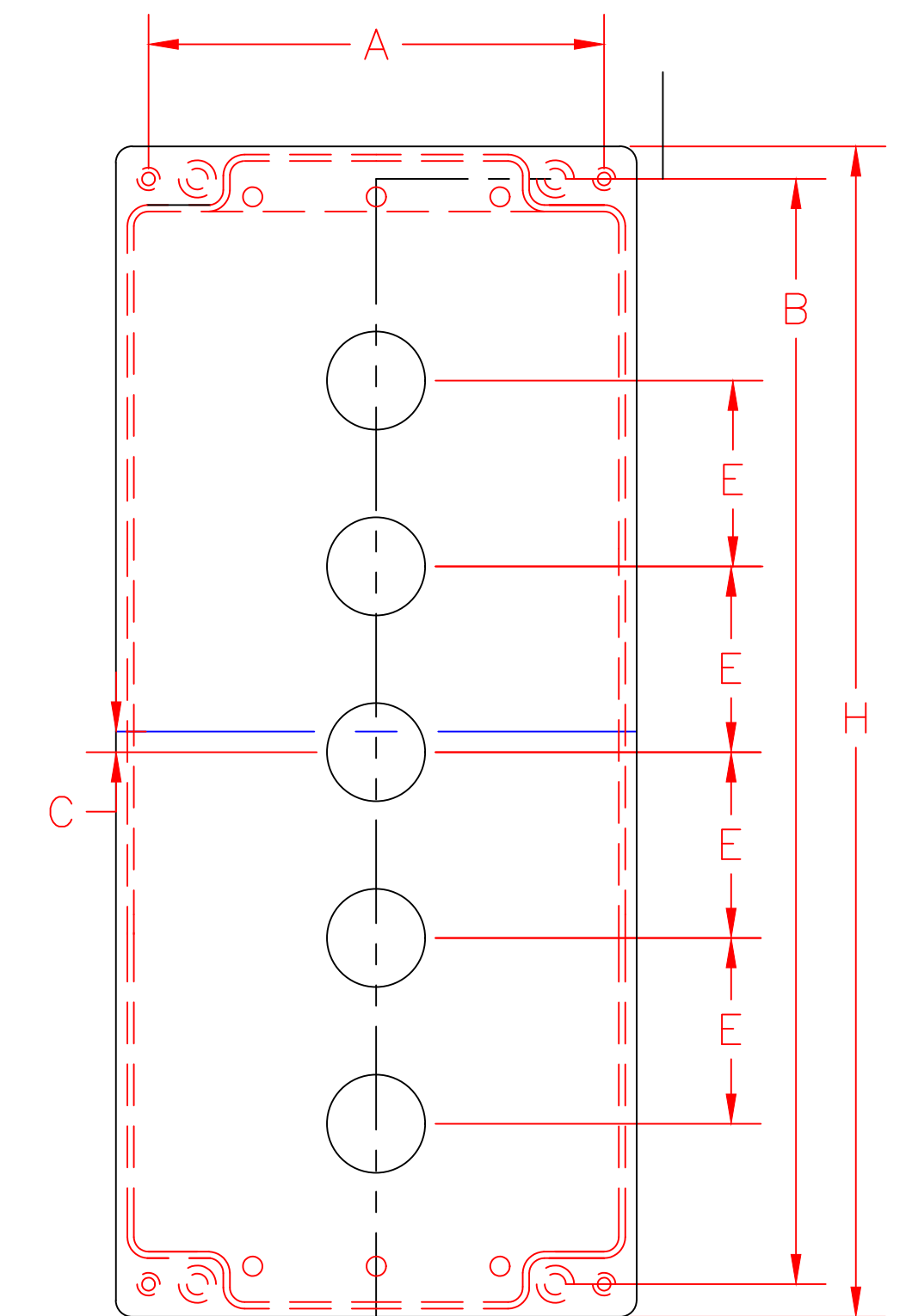
2 UNIT ENCLOSURE  
DC2 (ZAG07)



3 UNIT ENCLOSURE  
DC3 (ZAG08)



4 UNIT ENCLOSURE  
DC4 (ZAG08)



5 UNIT ENCLOSURE  
DC5 (ZAG13)

	Description	(H)	(A)	(B)	(C)	(D)	(E)
DC-5	5 UNIT ENCLOSURE	14.17	5.52	13.38	0.250	---	2.250
DC-4	4 UNIT ENCLOSURE	9.81	2.68	9.34	---	1.375	2.250
DC-3	3 UNIT ENCLOSURE	9.81	2.68	9.34	0.250	---	2.250
CS-2	2 UNIT ENCLOSURE	4.92	2.68	6.41	---	1.375	2.250
CS-1	1 UNIT ENCLOSURE	4.92	2.68	4.45	0.250	---	---

30MM ENCLOSURE SIZES & HOLE LOCATIONS

PVC (W/THRD) R75	$\frac{3}{4}$ "	1- $\frac{1}{16}$ "
PVC (NO THRD) P10	1"	1- $\frac{5}{16}$ "
PVC (NO THRD) P75	$\frac{3}{4}$ "	1- $\frac{1}{16}$ "
PVC (NO THRD) P50	$\frac{1}{2}$ "	$\frac{7}{8}$ "
ALUMINUM A10	1"	1- $\frac{5}{16}$ "
ALUMINUM A75	$\frac{3}{4}$ "	1- $\frac{1}{16}$ "
ALUMINUM A50	$\frac{1}{2}$ "	$\frac{7}{8}$ "
GALVANIZED G10	1"	1- $\frac{5}{16}$ "
GALVANIZED G75	$\frac{3}{4}$ "	1- $\frac{1}{16}$ "
GALVANIZED G50	$\frac{1}{2}$ "	$\frac{7}{8}$ "
HUB TYPE	CONDUIT SIZE	DRILL HOLE SIZE

HUB SIZE CHART

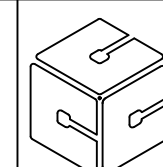
30MM STANDARD STATION  
DIE CAST ENCLOSURES

DRAWN BY:  
RCG

DATE:  
12-10-01

SCALE:  
0.5:1

DRAWING NO.  
WC100101



CONTROL CONCEPTS CORP.

P.O. BOX 496  
664 STATE STREET  
BEAVER, PA 15009

