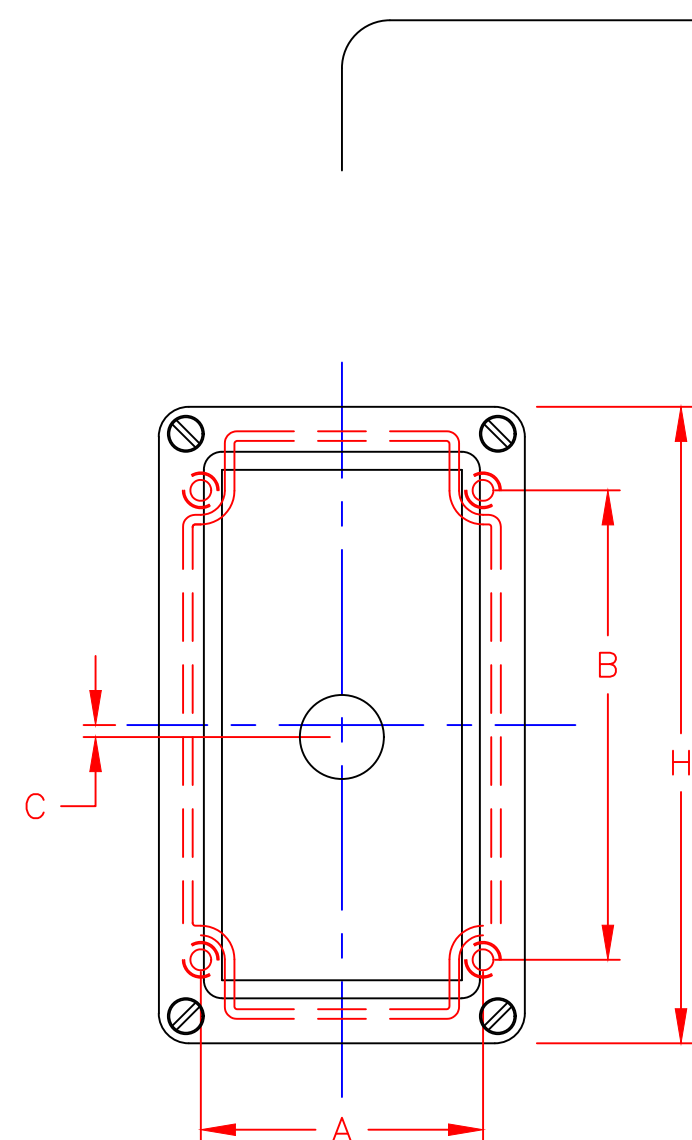
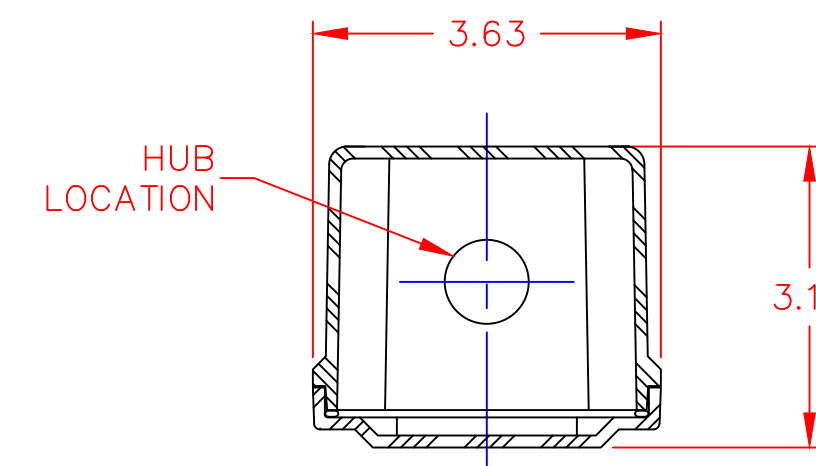
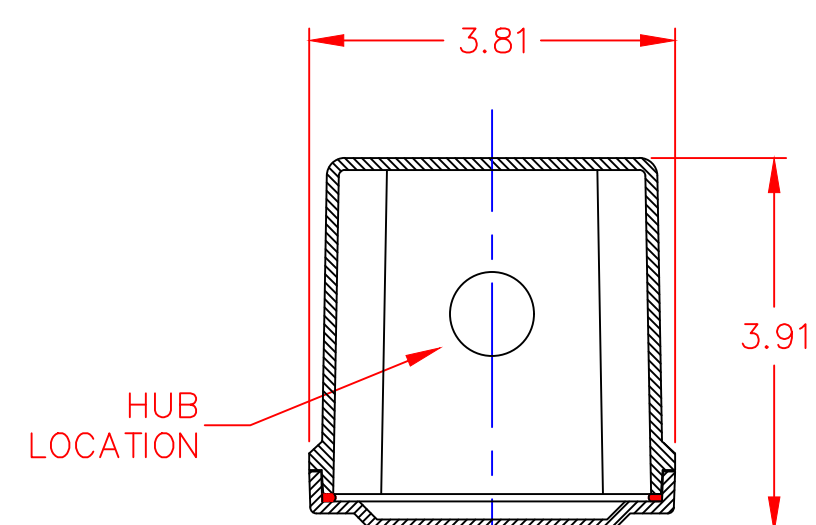
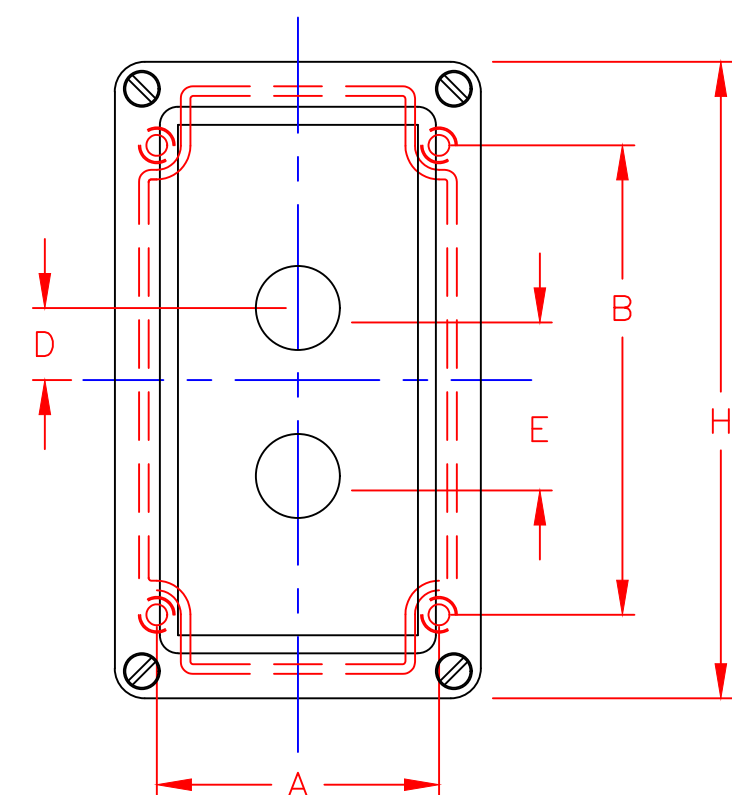


NOTE:

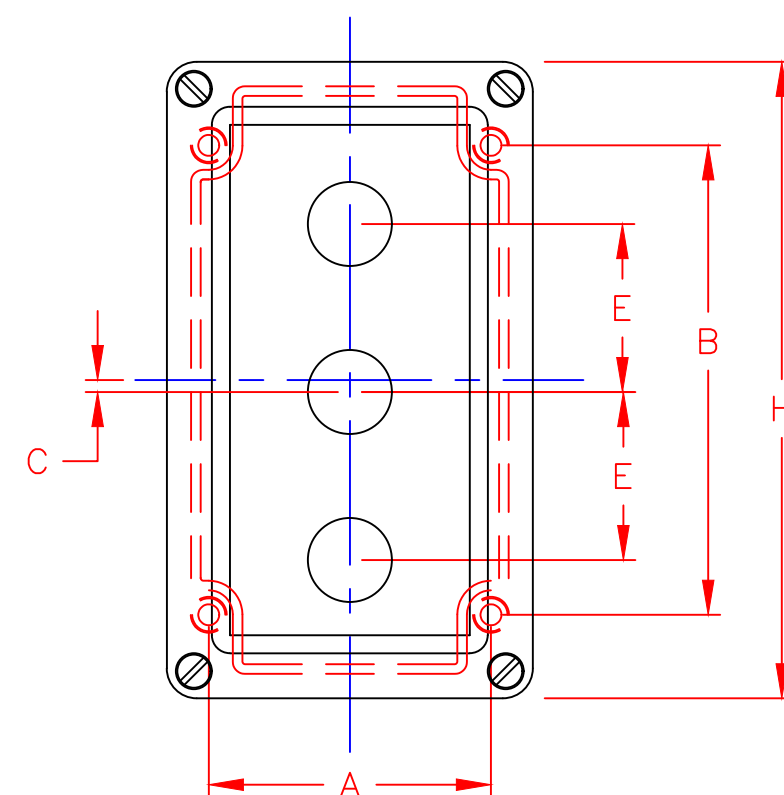
- 1) SPACING DESIGNED TO ACCOMPANY STANDARD AND SHORT LEGEND PLATES – CONSULT WITH CONTROL CONCEPTS FOR TALL, JUMBO AND SPECIAL LEGEND PLATE OPTIONS
- 2) WHEN USING MECHANICAL INTERLOCKS – CENTER LINE DISTANCE ARE 2 INCHES
- 3) ALL OPERATOR HOLES ARE $\frac{7}{8}$ DIA
- 4) SEE HUB CHART FOR HUB OPTIONS AND DRILLED HOLE SIZES. ALL HUBS ARE CENTERED ON BOTTOM FACE UNLESS OTHERWISE SPECIFIED.
- 5) CONTACT CONTROL CONCEPTS FOR CUSTOM ENCLOSURES



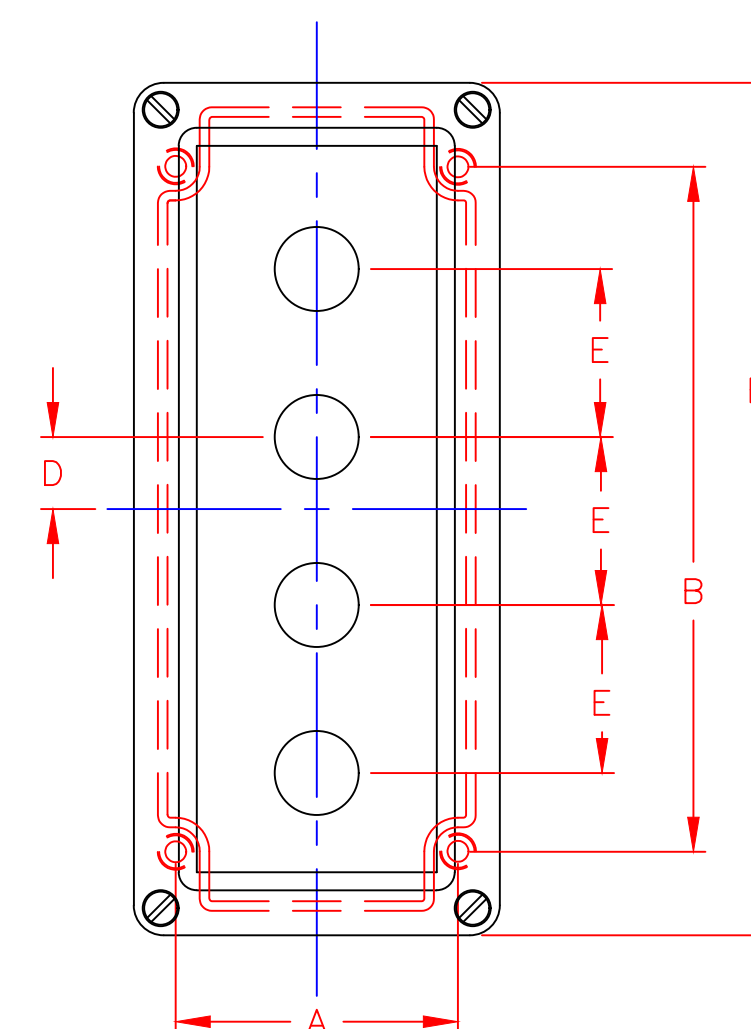
1 UNIT ENCLOSURE
22CS1 (CF644)



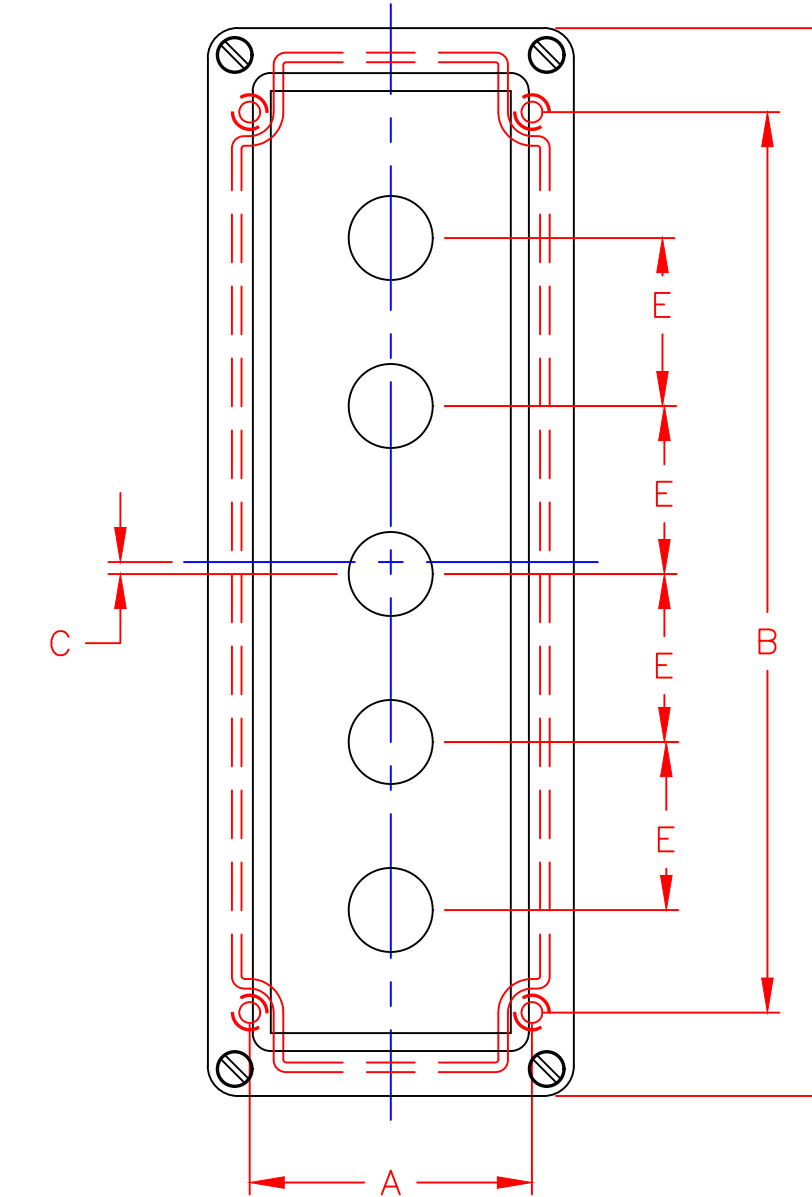
2 UNIT ENCLOSURE
22CS2 (CF644)



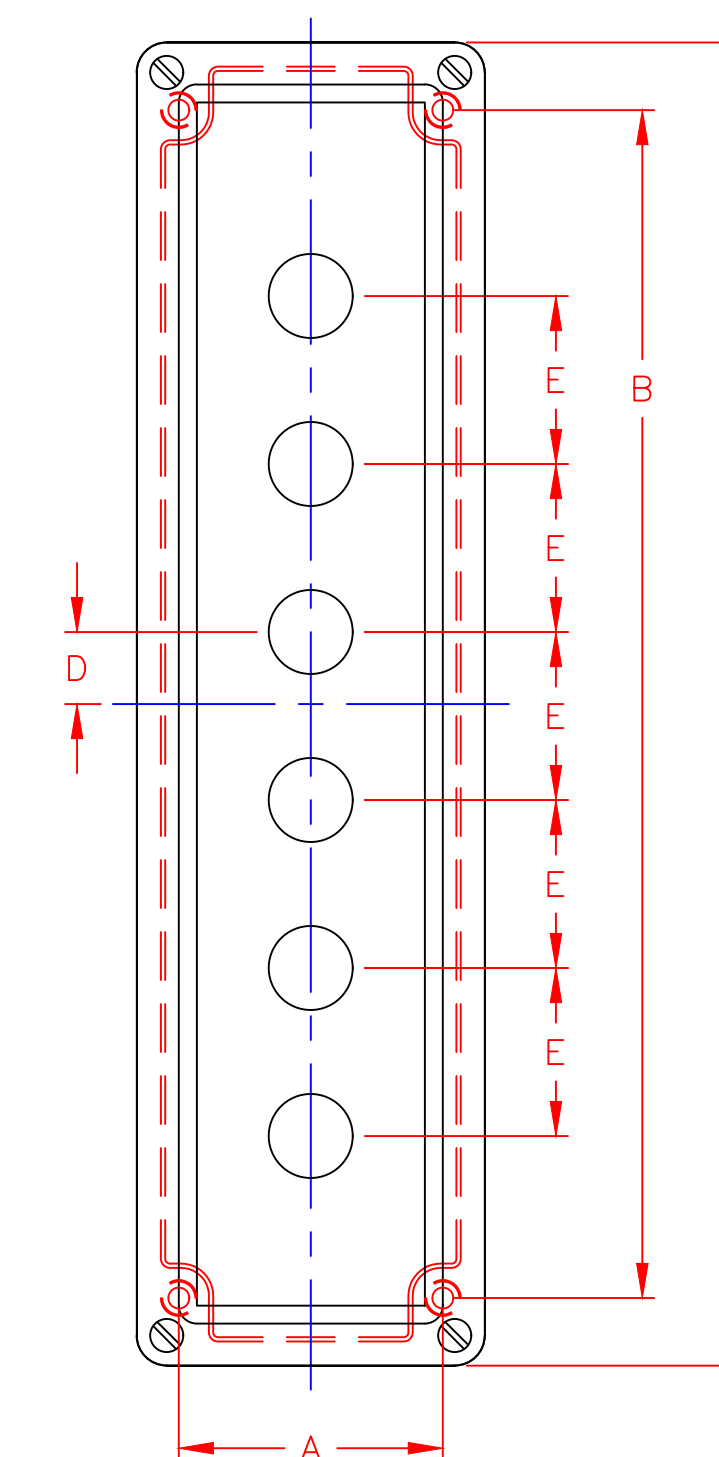
3 UNIT ENCLOSURE
22CS3 (CF644)



4 UNIT ENCLOSURE
22CS4 (CF844)



5 UNIT ENCLOSURE
22CS5 (CF1144)



6 UNIT ENCLOSURE
22CS6L (CF1432)

Description	(H)	(A)	(B)	(C)	(D)	(E)
22CS-6L 6 UNIT ENCLOSURE	13.78	2.75	12.40	---	0.750	1.750
22CS-5 5 UNIT ENCLOSURE	11.12	2.94	9.38	0.125	---	1.750
22CS-4 4 UNIT ENCLOSURE	11.12	2.94	9.38	---	0.750	1.750
22CS-3 3 UNIT ENCLOSURE	6.63	2.94	7.13	0.125	---	1.750
22CS-2 2 UNIT ENCLOSURE	6.63	2.94	4.88	---	0.750	1.750
22CS-1 1 UNIT ENCLOSURE	6.63	2.94	4.88	0.125	---	---

22MM ENCLOSURE SIZES & HOLE LOCATIONS

HUB TYPE	CONDUIT SIZE	DRILL HOLE SIZE
PVC (W/THRD) R75	$\frac{3}{4}$ "	$1-\frac{1}{16}$ "
PVC (NO THRD) P10	1"	$1-\frac{5}{16}$ "
PVC (NO THRD) P75	$\frac{3}{4}$ "	$1-\frac{1}{16}$ "
PVC (NO THRD) P50	$\frac{1}{2}$ "	$\frac{7}{8}$ "
ALUMINUM A10	1"	$1-\frac{5}{16}$ "
ALUMINUM A75	$\frac{3}{4}$ "	$1-\frac{1}{16}$ "
ALUMINUM A50	$\frac{1}{2}$ "	$\frac{7}{8}$ "
GALVANIZED G10	1"	$1-\frac{5}{16}$ "
GALVANIZED G75	$\frac{3}{4}$ "	$1-\frac{1}{16}$ "
GALVANIZED G50	$\frac{1}{2}$ "	$\frac{7}{8}$ "

HUB SIZE CHART

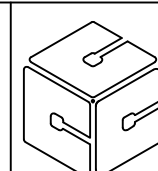
22MM STANDARD STATION
POLYESTER ENCLOSURES

DRAWN BY:
RCG

DATE:
12-10-01

SCALE:
0.5:1

DRAWING NO.
WC100103



CONTROL CONCEPTS CORP.

P.O. BOX 496
664 STATE STREET
BEAVER, PA 15009

